

Final Report:

**Mapping the Distribution and Abundance of Macroalgae in the Indian River
Lagoon**

CONTRACT #SI44112

September 1, 2006

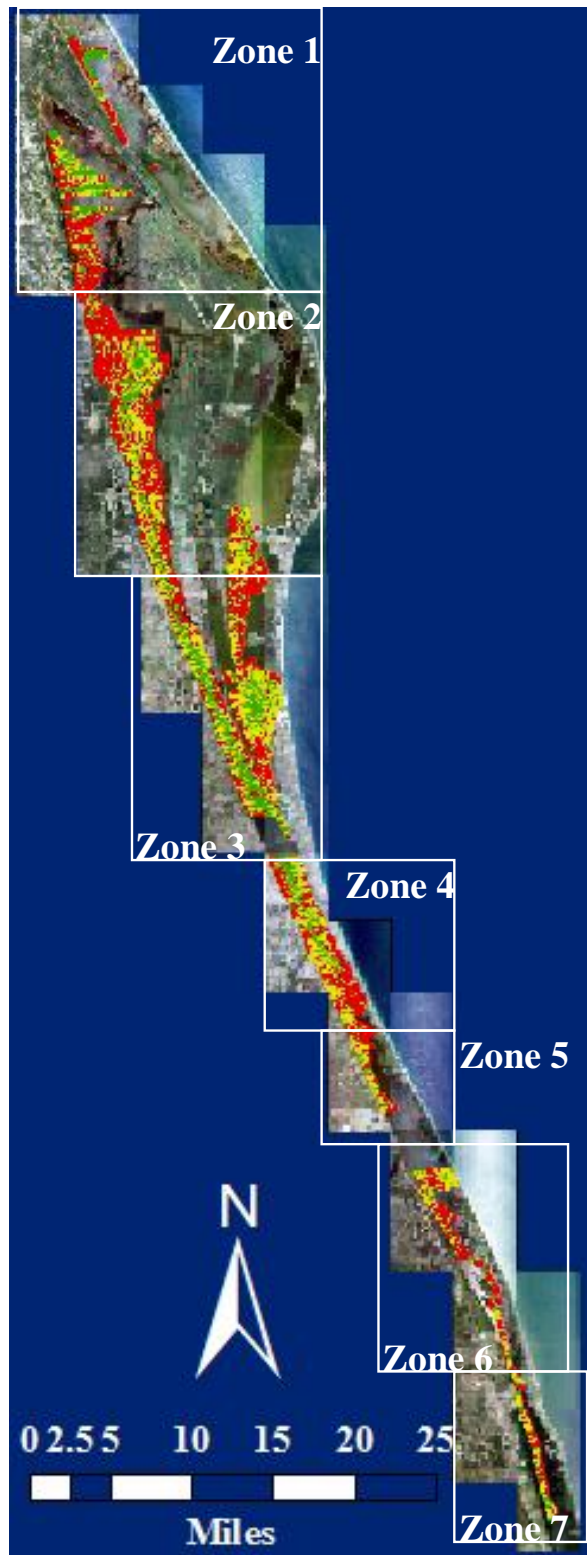
Nova Southeastern University

Oceanographic Center,

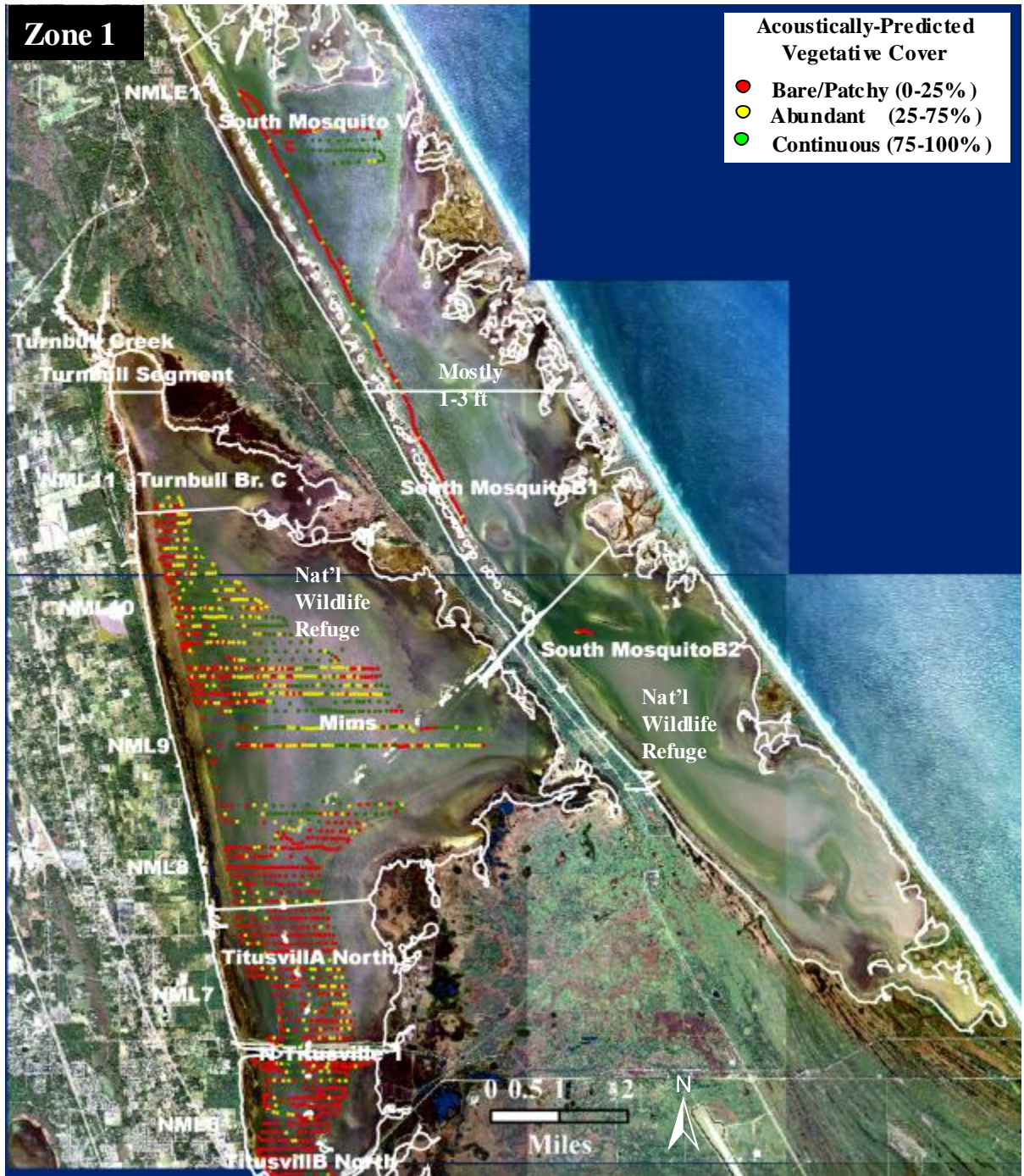
Dania Beach, FL



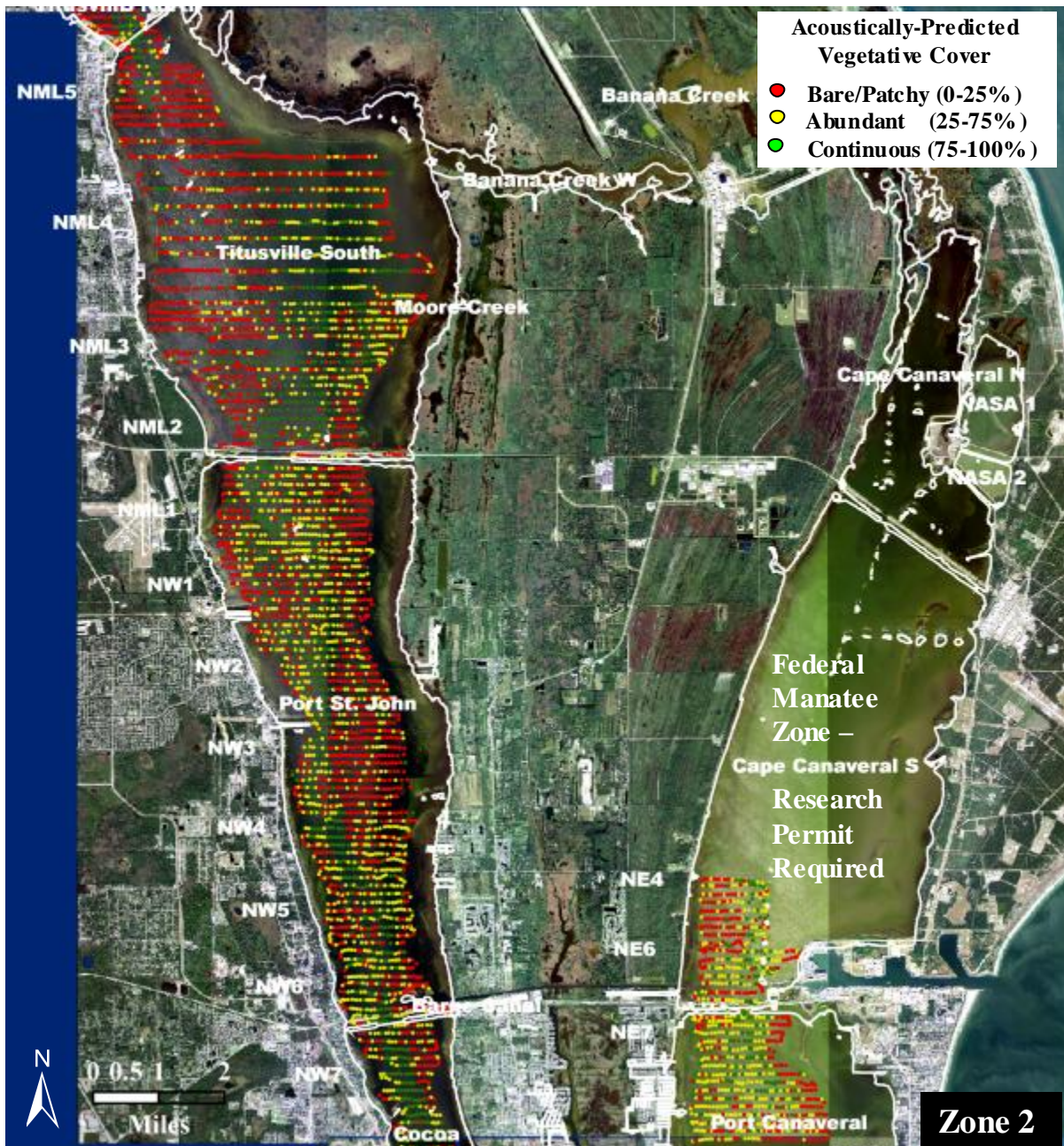
For the
St. Johns River Water Management District



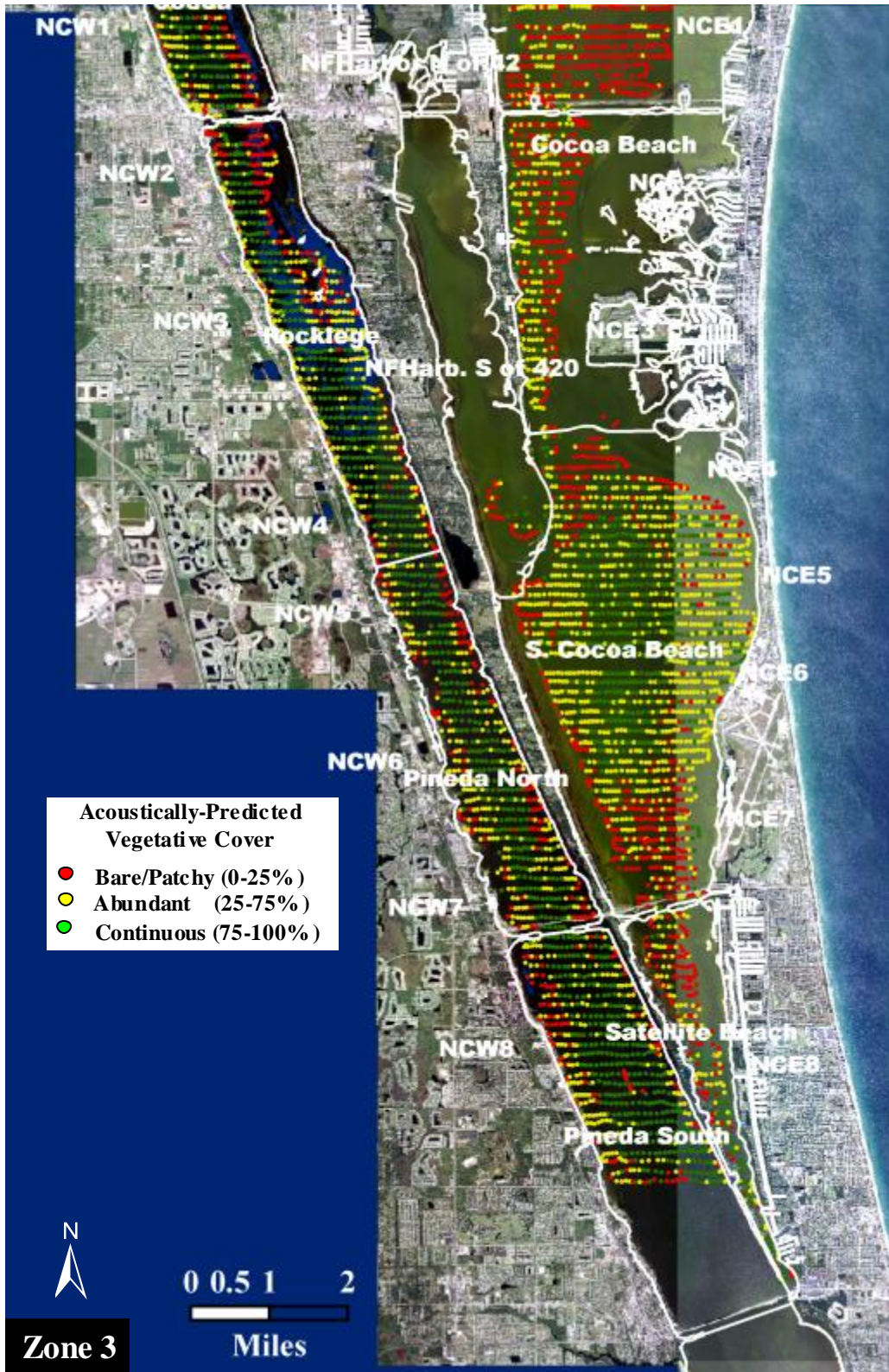
Appendix B 1. Extent of 2005 QTC 200 kHz survey area. Actual trackplot of acoustic classifications, based on blocks of twenty records. **Red is bare/patchy cover, yellow is abundant cover, and green is continuous cover.** Vegetative cover includes both branched and bladed morphologies.



Appendix B 2. 2005 QTC View 200 kHz survey. Actual trackplot of acoustic classifications, based on blocks of twenty records. Red is bare/patchy cover, yellow is abundant cover, and green is continuous cover. Vegetative cover includes both branched and bladed morphologies.



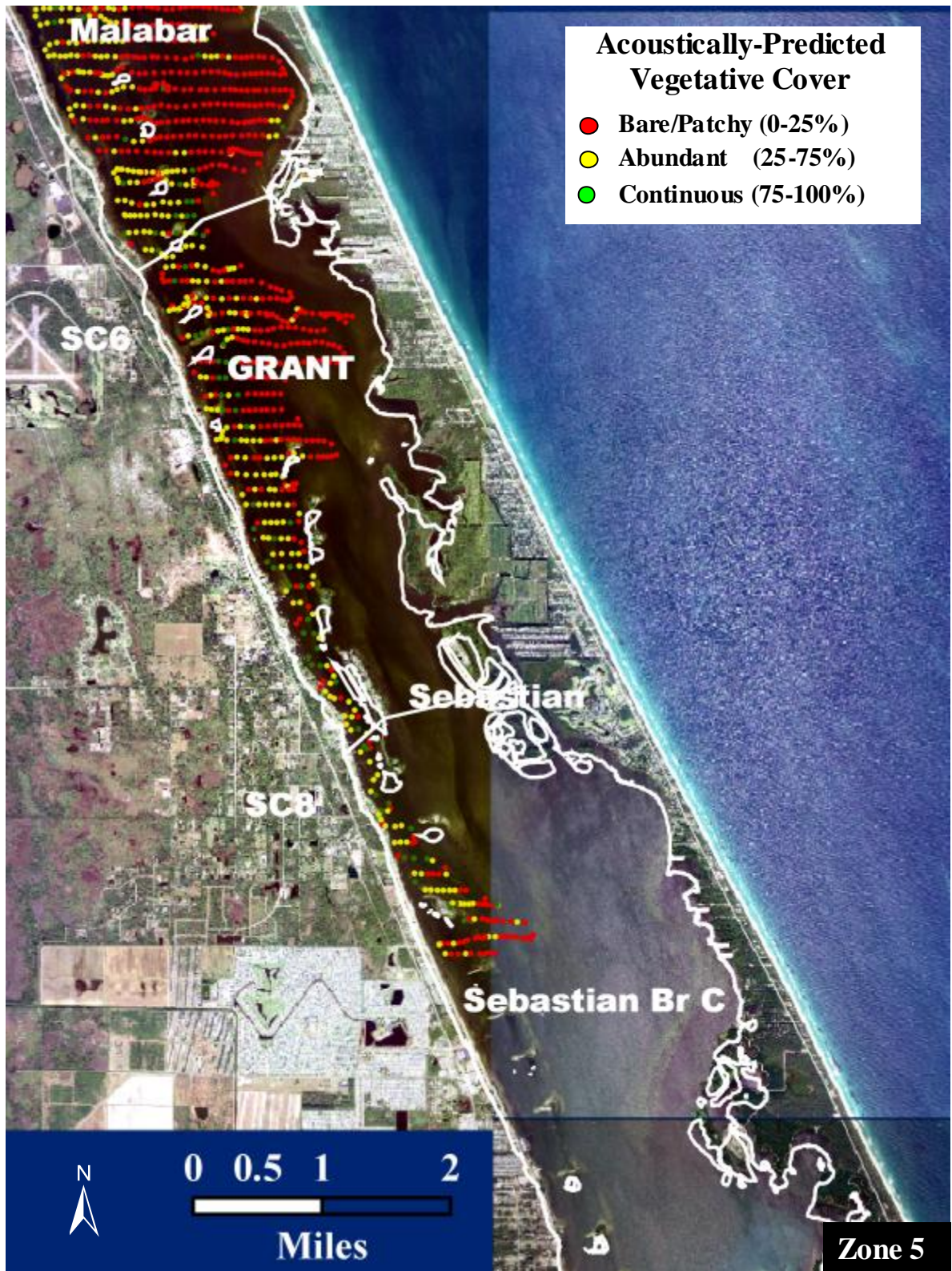
Appendix B 3. 2005 QTC View 200 kHz survey. Actual trackplot of acoustic classifications, based on blocks of twenty records. Red is bare/patchy cover, yellow is abundant cover, and green is continuous cover. Vegetative cover includes both branched and bladed morphologies.



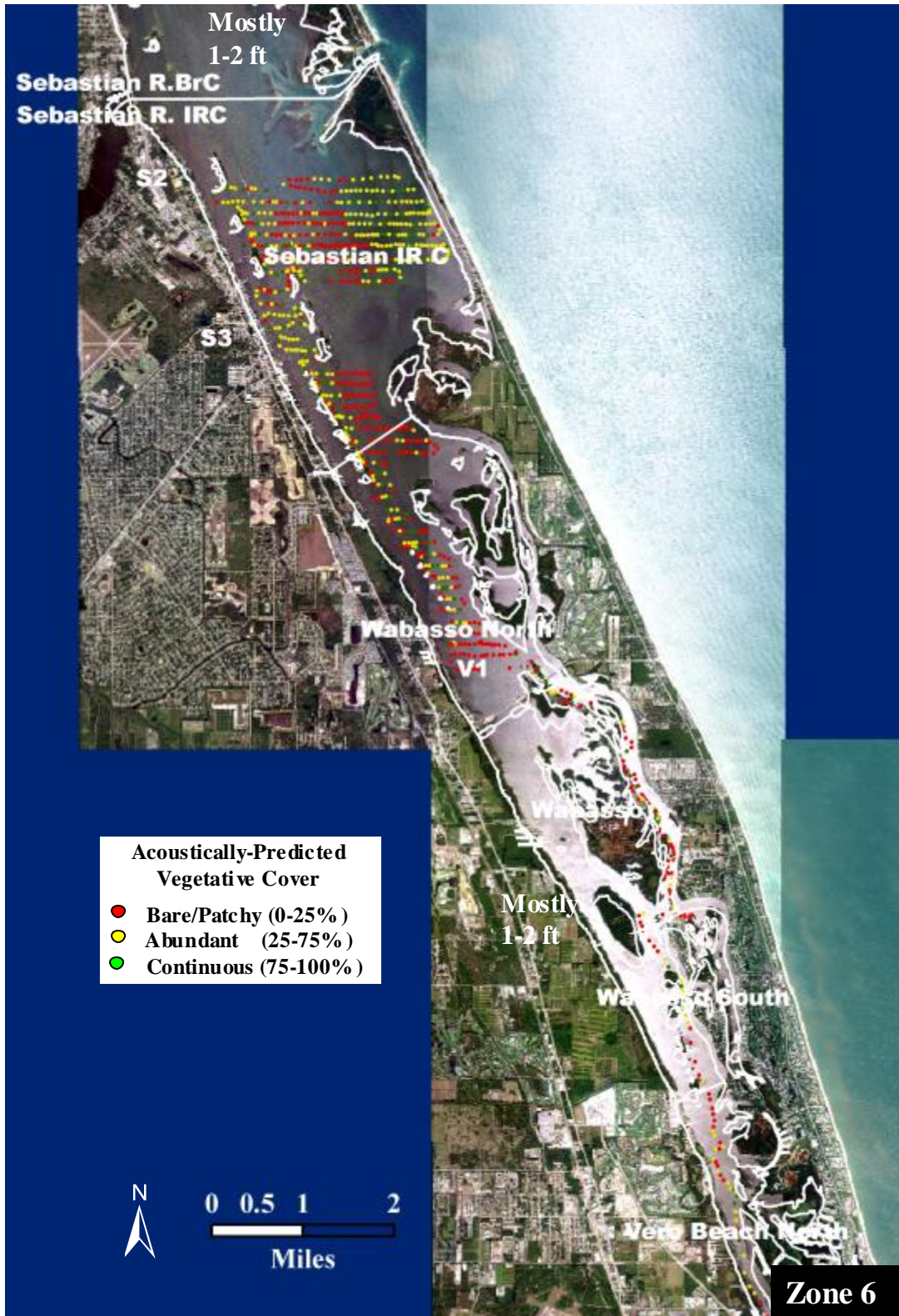
Appendix B 4. 2005 QTC View 200 kHz survey. Actual trackplot of acoustic classifications, based on blocks of twenty records. Red is bare/patchy cover, yellow is abundant cover, and green is continuous cover. Vegetative cover includes both branched and bladed morphologies.



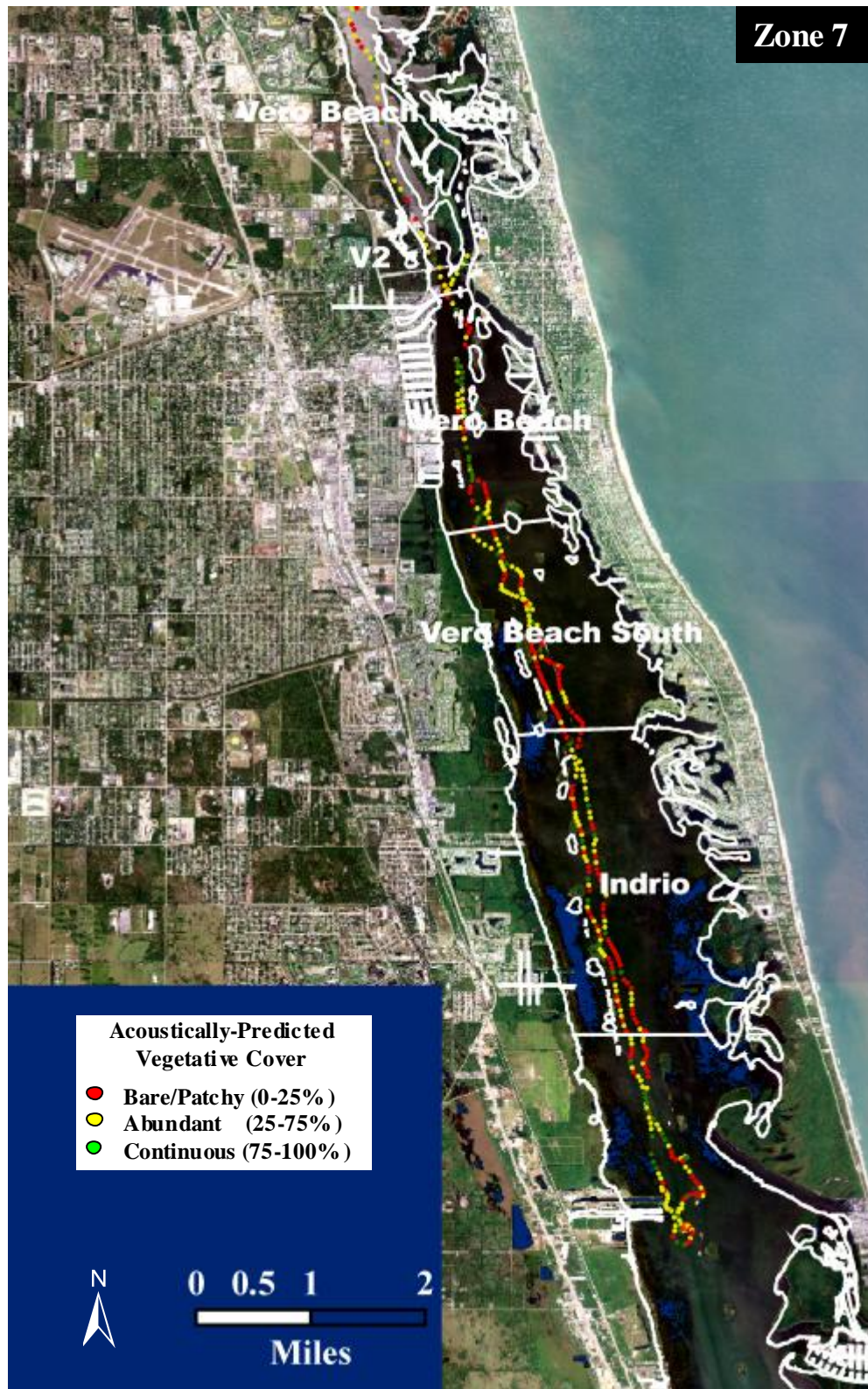
Appendix B 5. 2005 QTC View 200 kHz survey. Actual trackplot of acoustic classifications, based on blocks of twenty records. Red is bare/patchy cover, yellow is abundant cover, and green is continuous cover. Vegetative cover includes both branched and bladed morphologies.



Appendix B 6. 2005 QTC View 200 kHz survey. Actual trackplot of acoustic classifications, based on blocks of twenty records. Red is bare/patchy cover, yellow is abundant cover, and green is continuous cover. Vegetative cover includes both branched and bladed morphologies.



Appendix B 7. 2005 QTC View 200 kHz survey. Actual trackplot of acoustic classifications, based on blocks of twenty records. Red is bare/patchy cover, yellow is abundant cover, and green is continuous cover. Vegetative cover includes both branched and bladed morphologies.



Appendix B 8. 2005 QTC View 200 kHz survey. Actual trackplot of acoustic classifications, based on stacks of twenty records. Red is bare/patchy cover, yellow is abundant cover, and green is continuous cover. Vegetative cover includes both branched and bladed morphologies.