

Water Use Measurement and Reporting Agenda Item 6

Mike Register, P.E.

Division of Water Supply Planning and Assessment

Victor Castro

Division of Regulatory Services



What Requires an Individual Consumptive Use Permit?

- Water use greater than or equal to 100,000 gallons per day on average
- Systems with the potential to withdraw 1,000,000 gallons or more in a day
- Wells with a diameter of 6 inches or more
- Surface water intake pipe(s) with a cumulative diameter of 6 inches or more

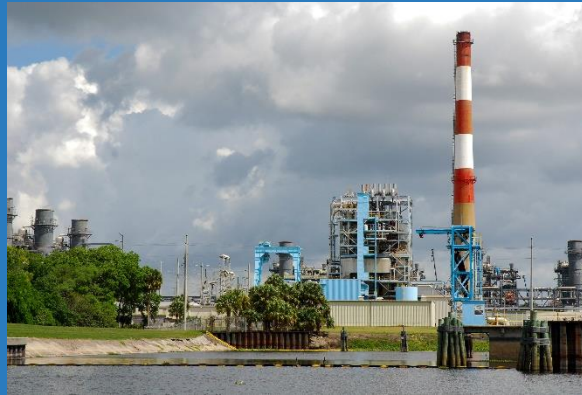


What Permittees Have To Measure Their Water Use?



What Permittees Have To Measure Their Water Use?

All of them

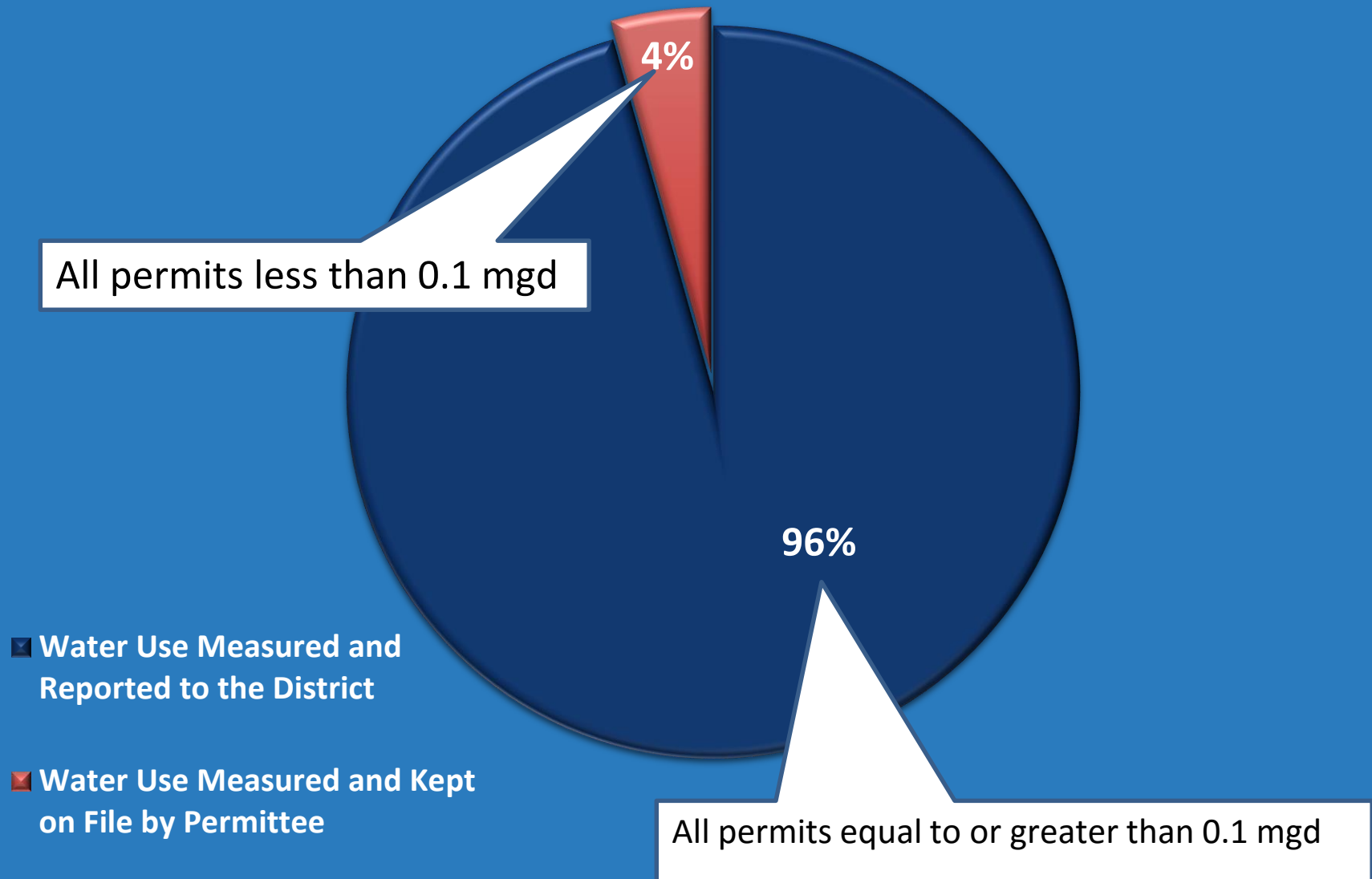


What Permittees Have To Report Their Water Use?

- All permittees with an allocation equal to or greater than 100,000 gallons per day on average must report their monthly water use semi-annually (Form EN-50)
- All other permittees must measure their water use and maintain the records for District inspection



Permitted Groundwater Allocations in SJRWMD



What About Uses That Don't Require an Individual CUP?

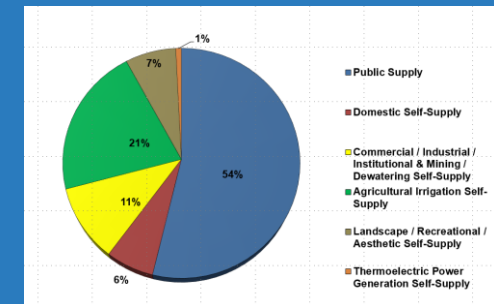
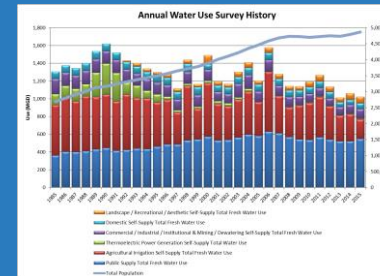
- Domestic Self Supply (DSS)
- Sub-threshold — Agriculture
- Sub-threshold — Other



Annual Water Use Survey (AWUS)

- Yearly publication since 1978

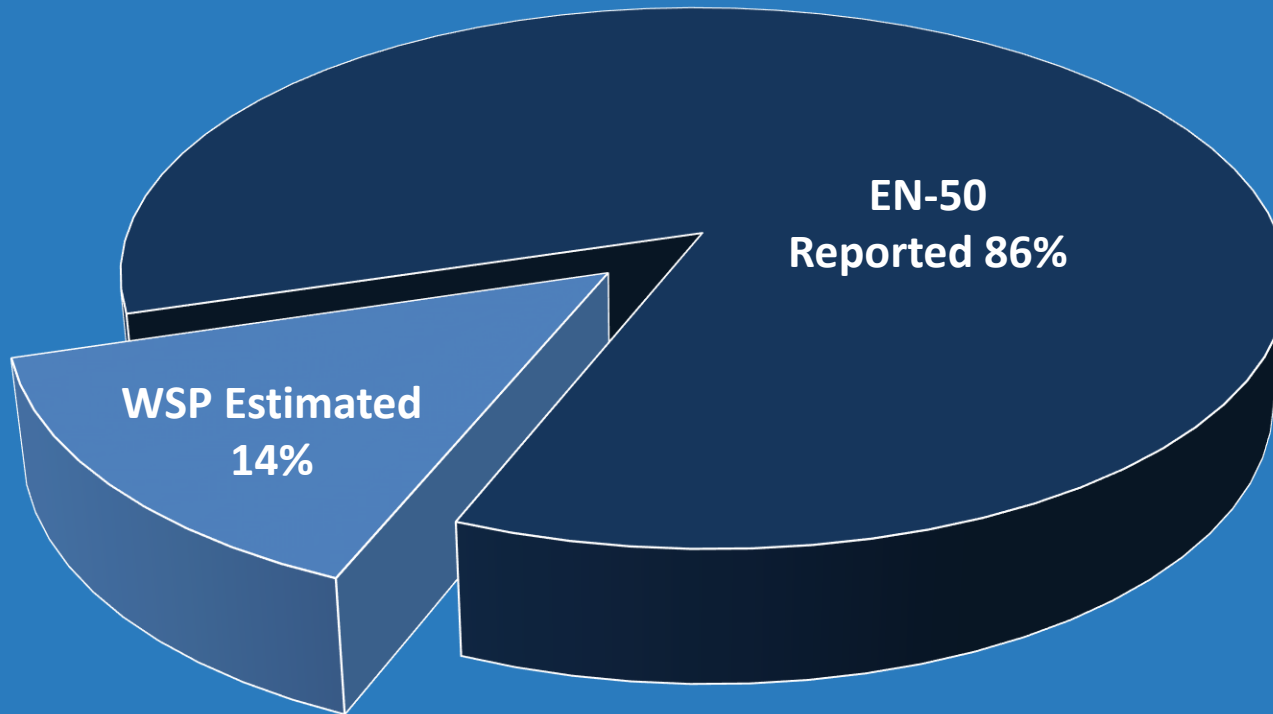
- Historic water use
 - By category and by county
- Population
 - By category and by county
- Per Capita



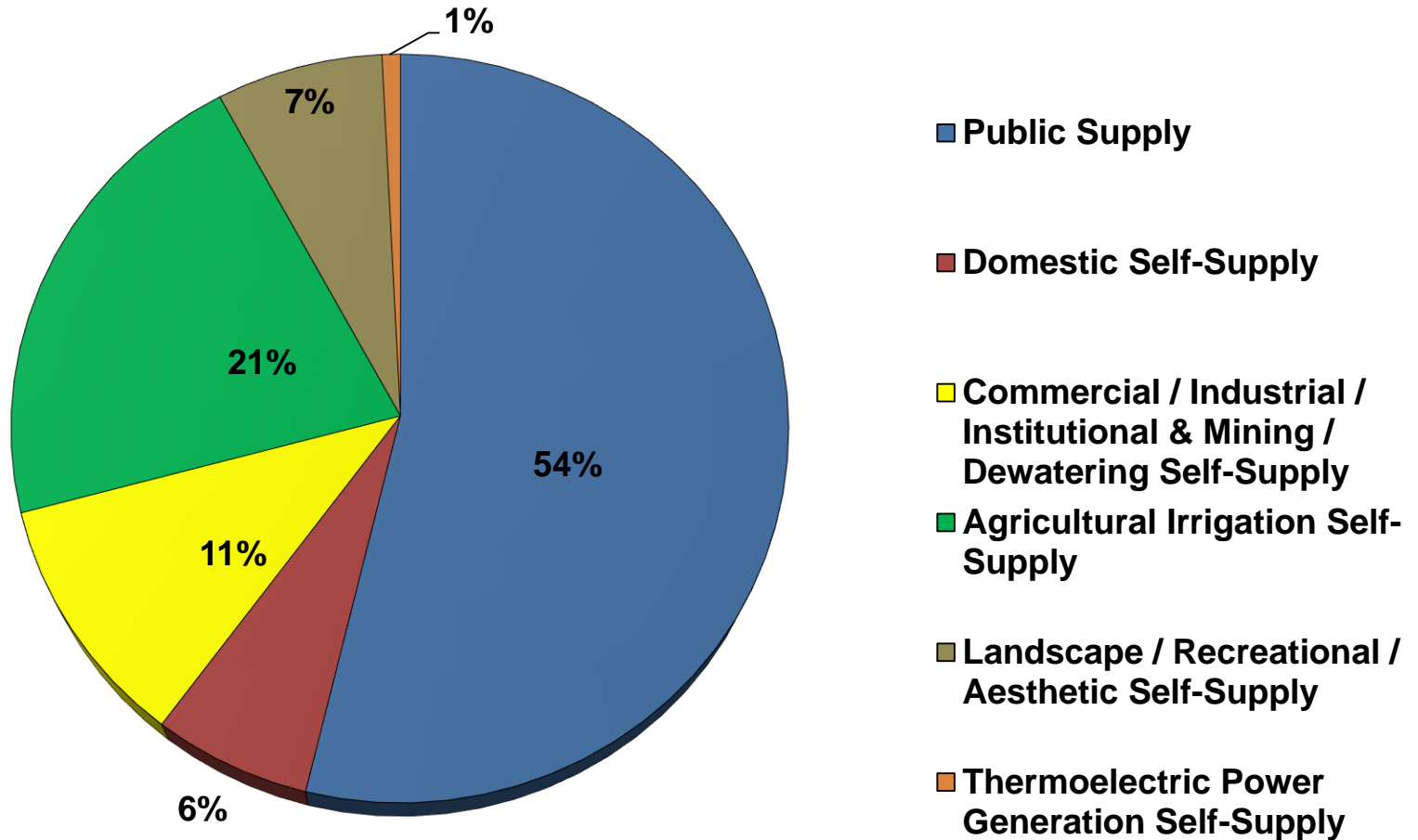
Annual Water Use Survey

| Category | Source of Data |
|---|--|
| Public Supply (Large and Small) | EN-50 data, FDEP monthly operating report data |
| Domestic Self-supply | Population and Water Use Estimated by SJRWMD |
| Commercial/Industrial/Institutional and Mining/Dewatering | EN-50 data |
| Landscape/Recreation/Aesthetic | EN-50 data |
| Agriculture | EN-50 data, FDACS FSAID |
| Power Generation | EN-50 data, FDEP MOR data, SJRWMD surveys |
| Reclaimed Water | FDEP Annual Reuse Inventory |

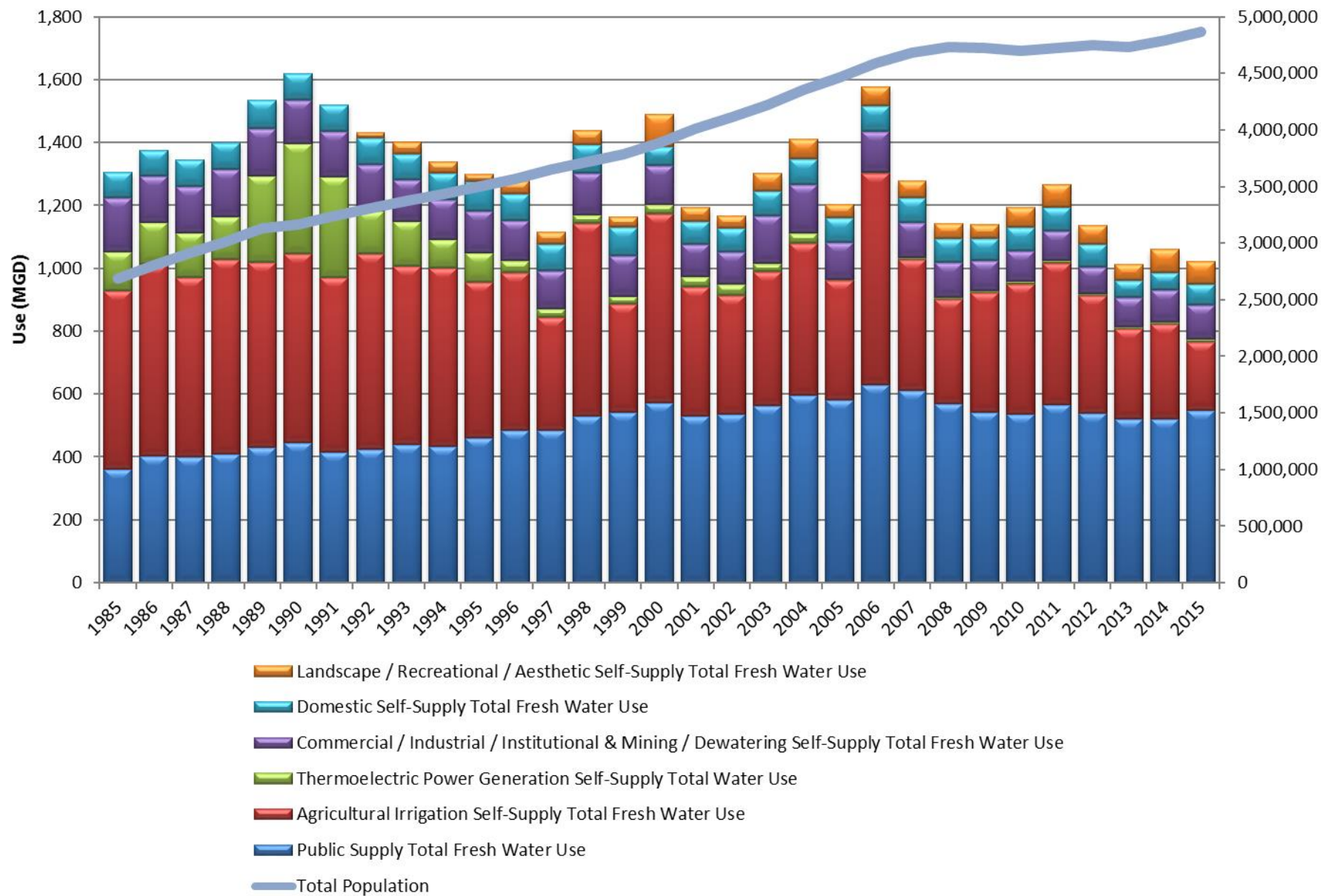
2015 Consumptive Water Use Total = 1,024 MGD



2015 Water Use Summary



Annual Water Use Survey History





“They are not really trying to monitor everyone....”

“We do not even monitor how much the permit holders are using...”

“Change the data and results in the plan....”

“..not required to monitor pipes or several pipes that measure smaller than 8 inches in diameter”

“...need bright and imaginative people working collaboratively with the public....”





SJRWMD Mission

To protect our natural resources and support Florida's growth by ensuring the sustainable use of Florida's water for the benefit of the people of the district and the state

