

Central Springs/East Coast Regional Water Supply Plan (2020 – 2040)

Agenda Item 4
February 8, 2022

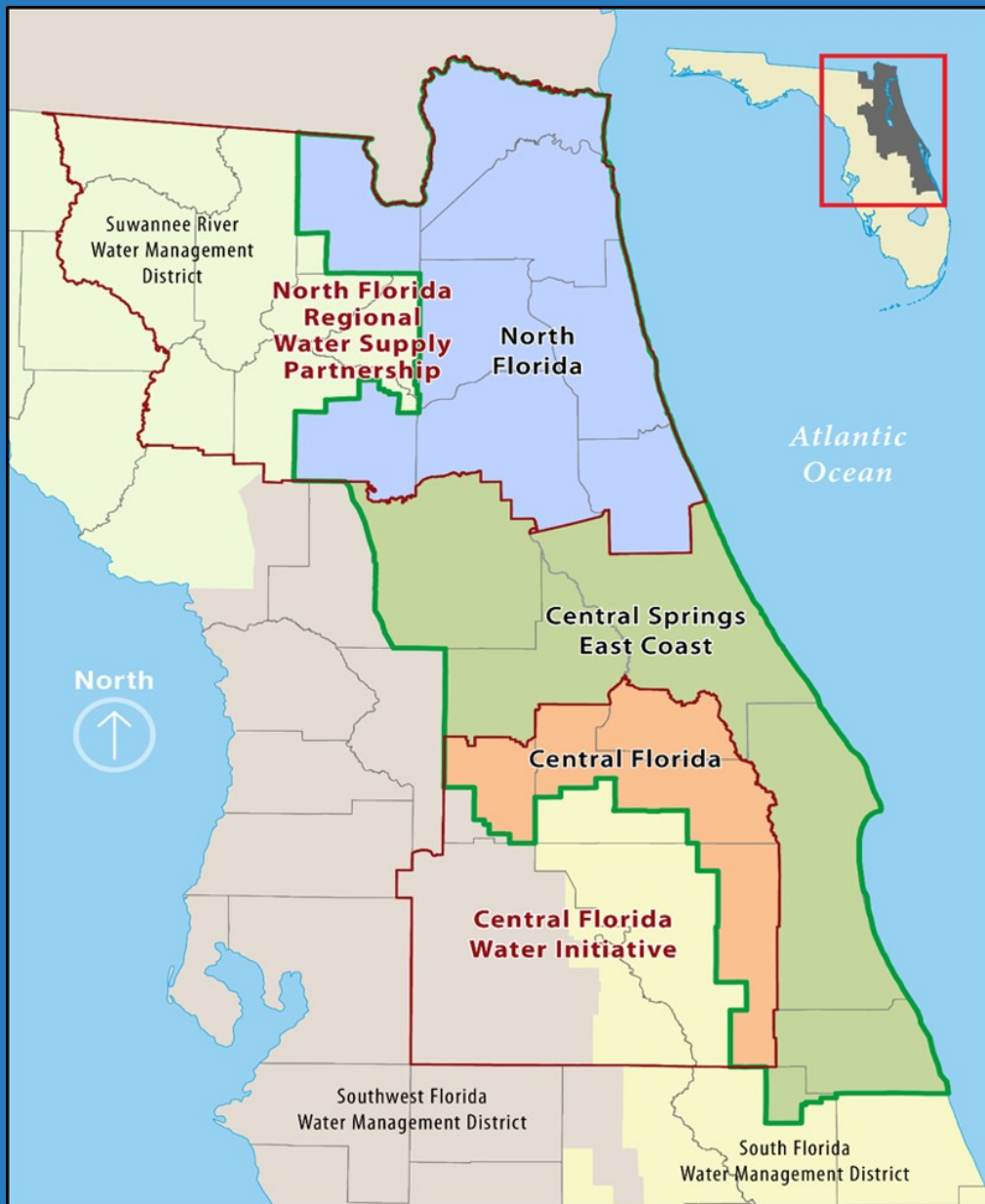
**Joy Kokjohn, Regional Water Supply Planning Coordinator
Bureau of Water Supply Planning**



Regional Water Supply Planning

- Required by statute
- 20-year planning horizon
- Conducted in an open public process
- Coordination with other agencies
- Approval by the Governing Board
- Updated every five years

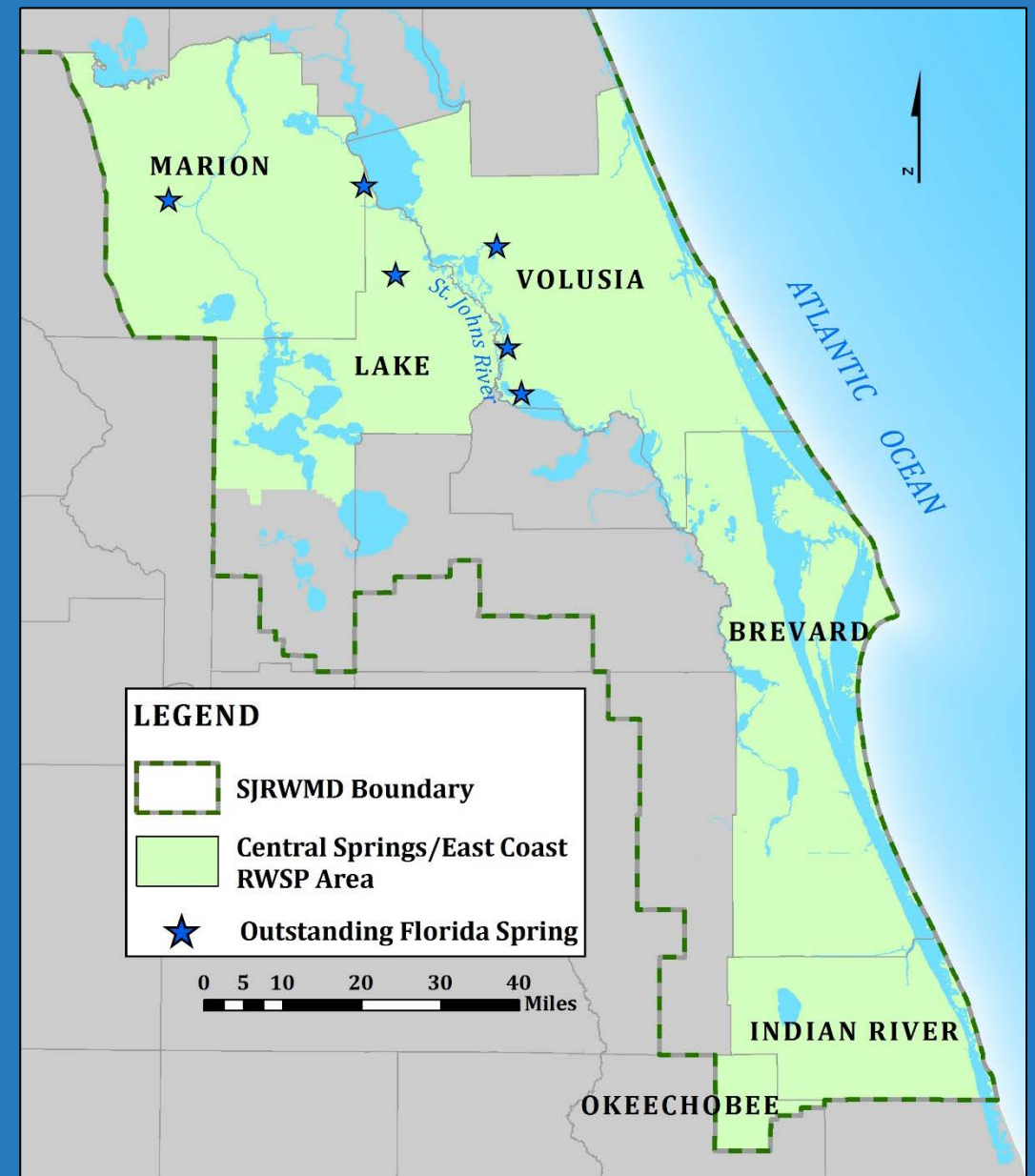




SJRWMD Planning Regions

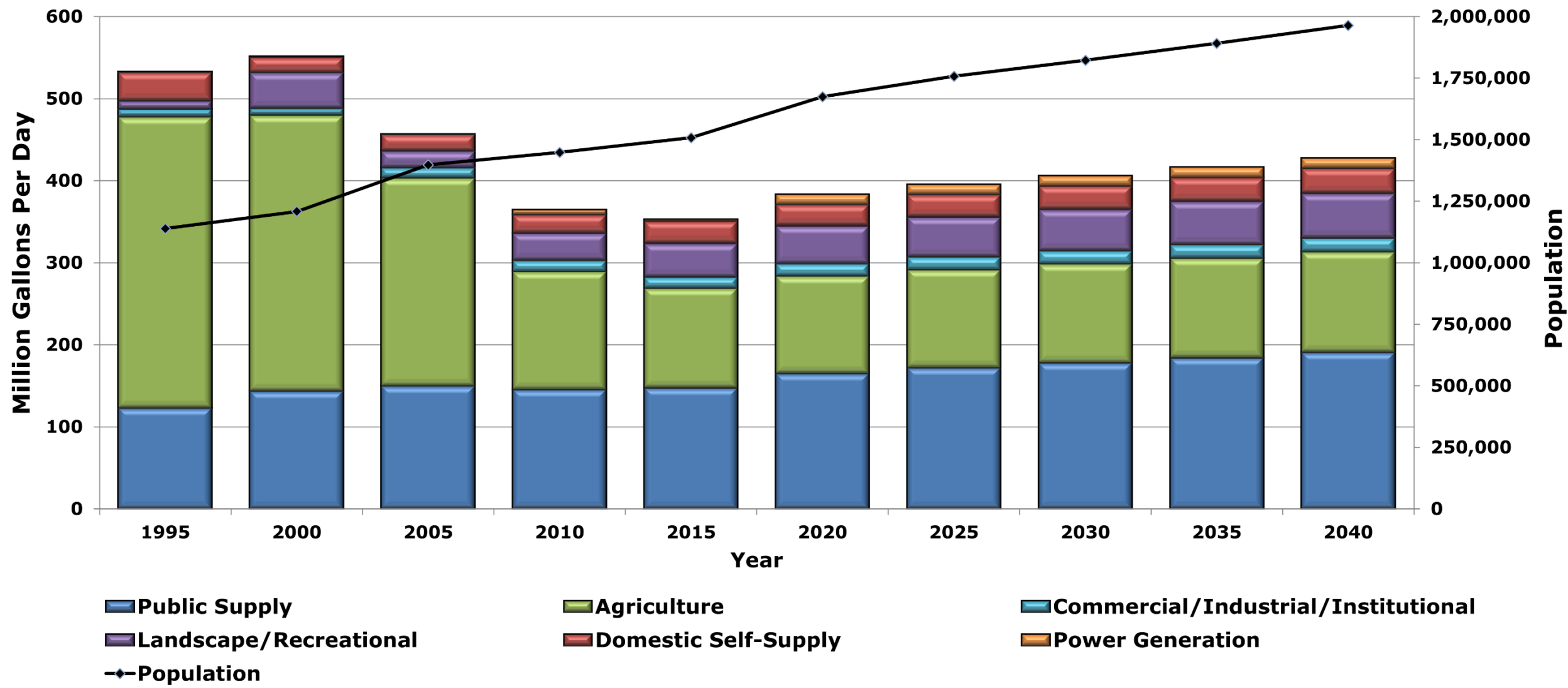


St. Johns River
Water Management District



Central Springs/East Coast (CSEC) Planning Region

CSEC Historic and Projected Water Use and Population



Water Resource Evaluation

Can future water demand be met with traditional sources, while protecting water resources and related natural systems?



MFL water bodies



Groundwater quality



Wetlands

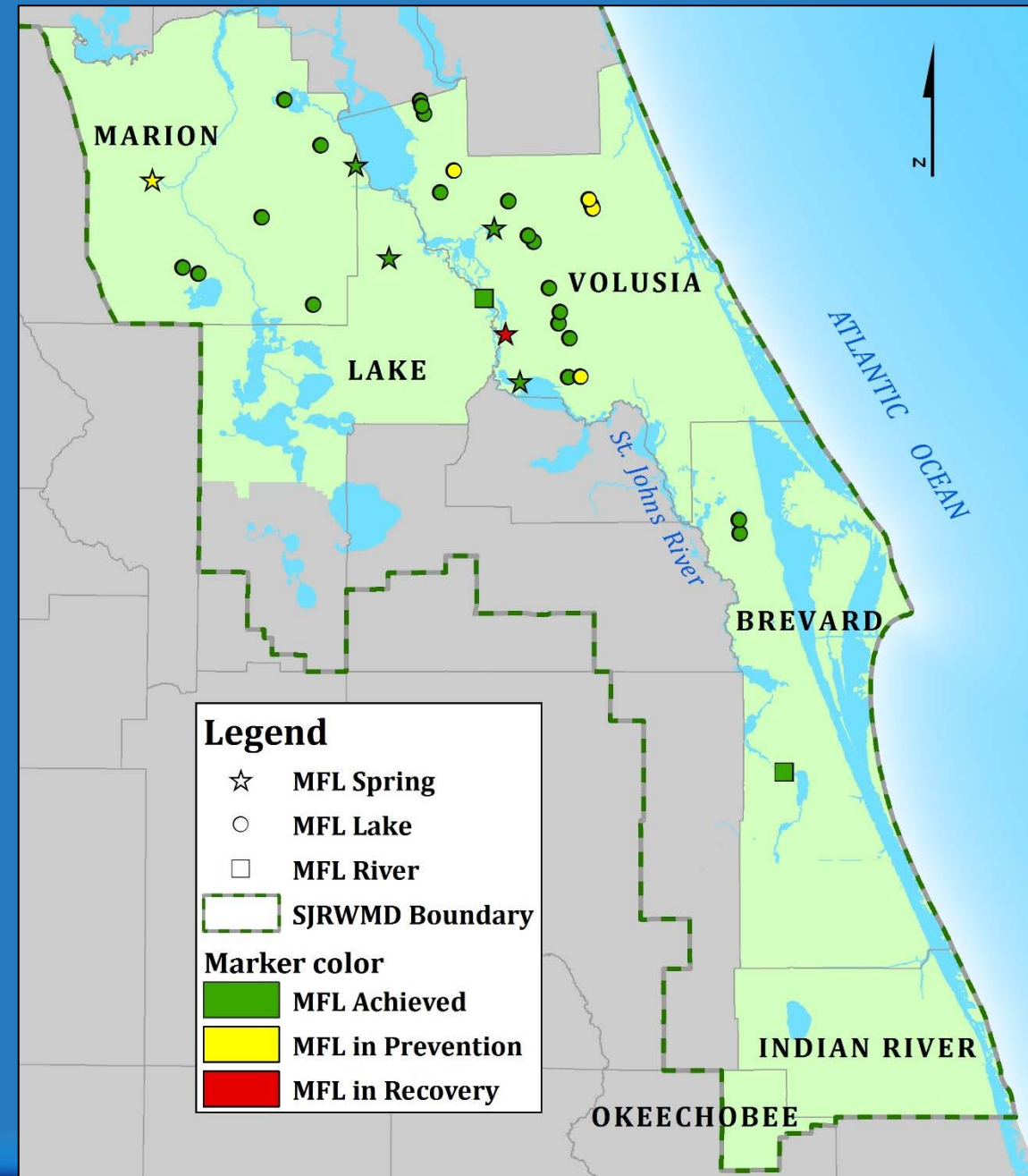


Minimum Flows and Minimum Levels (MFLs)

- Assessed MFL water bodies = 33
- Water bodies in prevention = 5
- Water bodies in recovery = 1

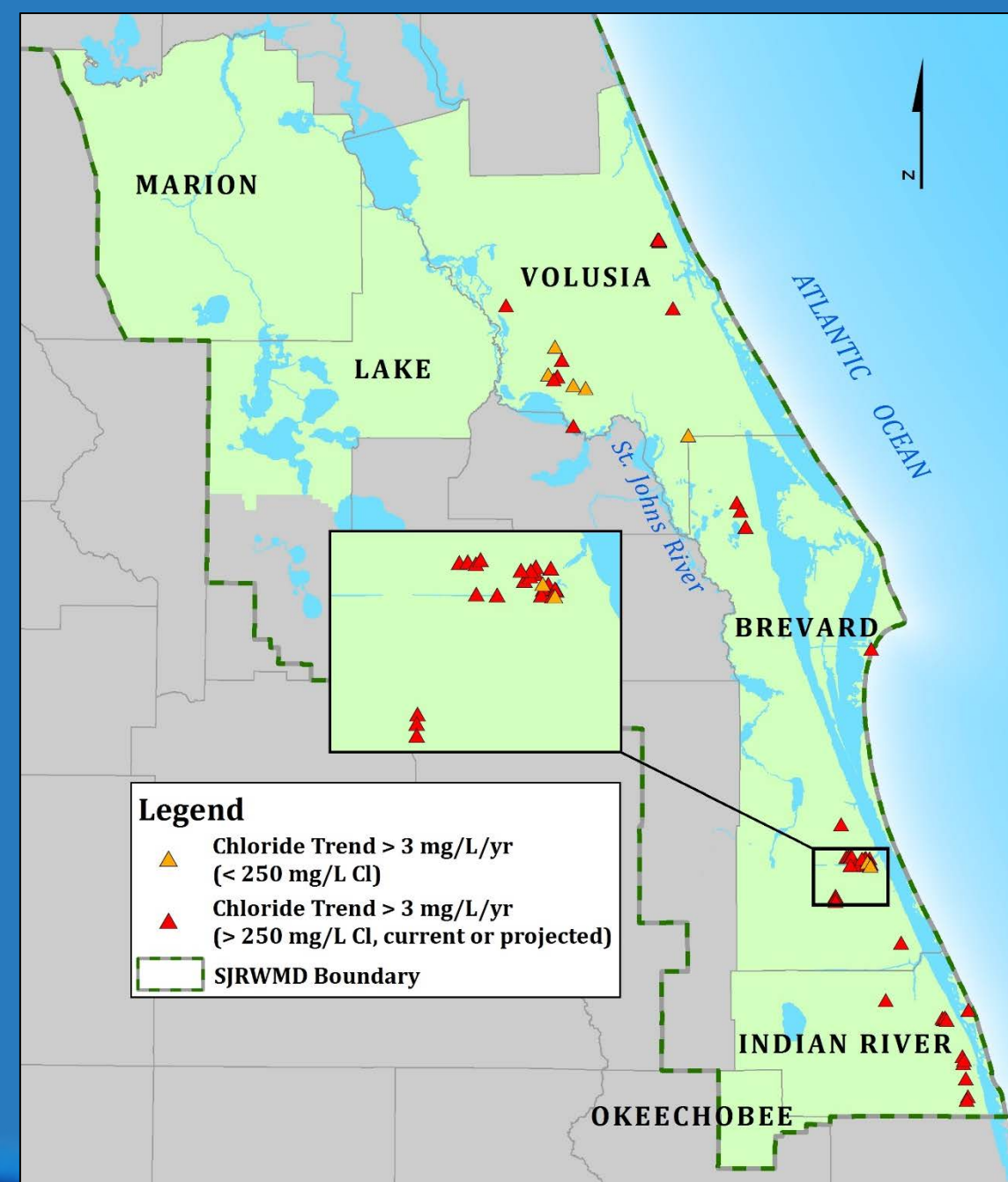
Prevention/Recovery Strategies

- 2013 Volusia Strategy and five-year assessment
- 2017 Silver Springs Prevention Strategy
- 2020 Lake Butler Strategy



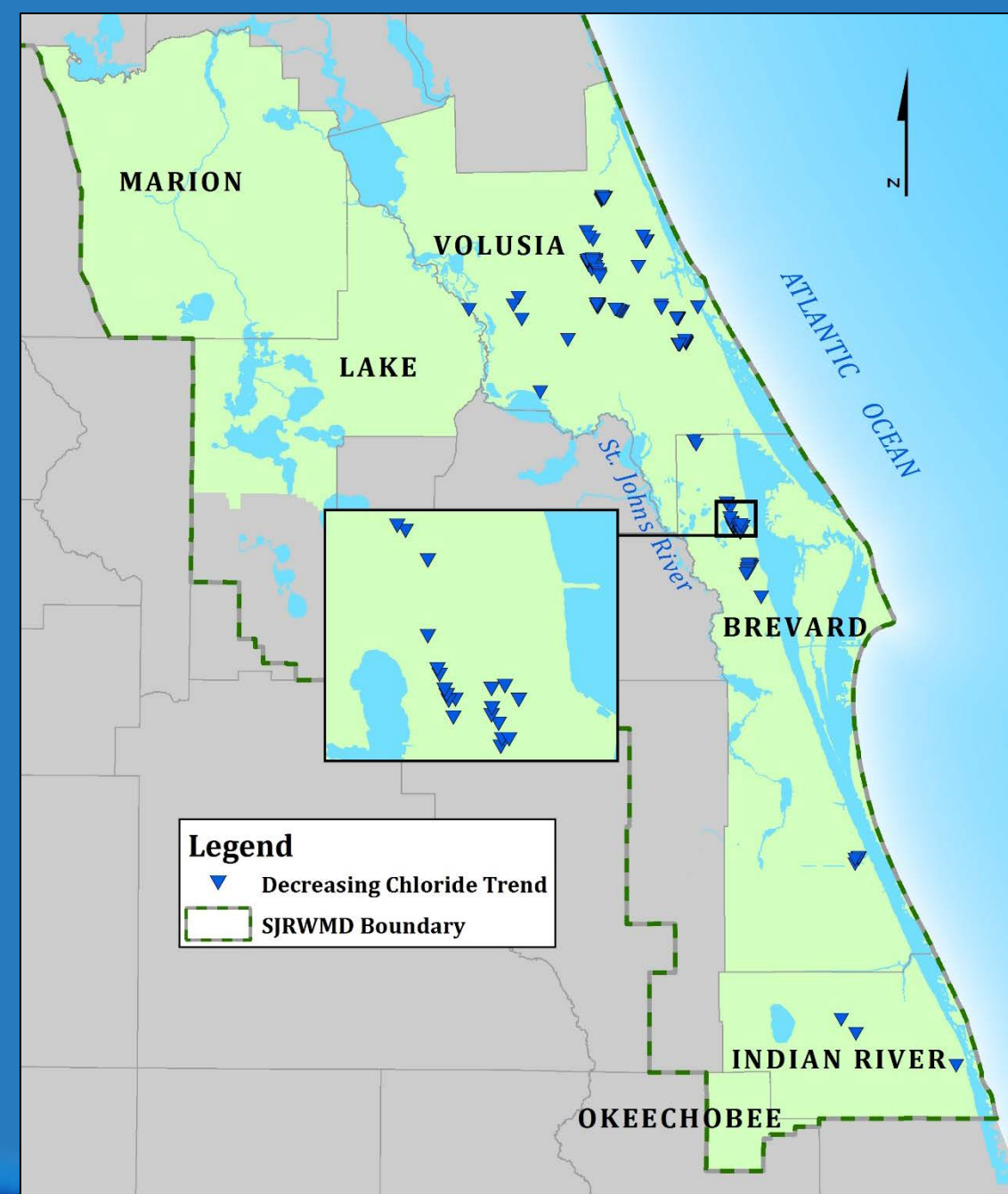
Water Quality (Saltwater Intrusion)

- 389 wells analyzed for chloride trends
- 61 wells with high rate of change (> 3 mg/L/yr)
- 33 wells currently exceed 250 mg/L SDWS
- 22 wells predicted to exceed 250 mg/L SDWS by 2040



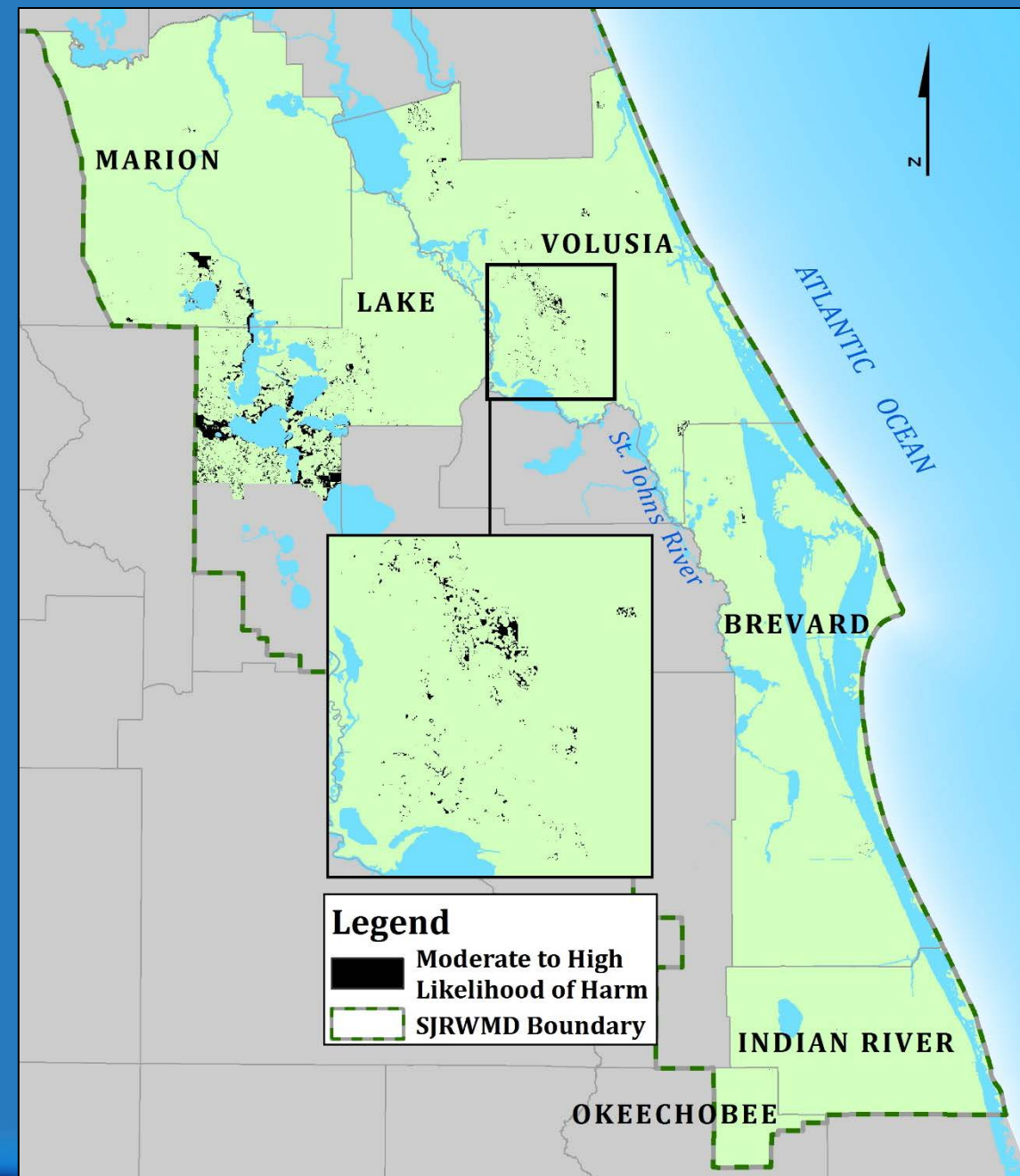
Water Quality (Saltwater Intrusion)

- 117 wells with decreasing chloride trends
- Majority public supply wells
- Success of well field management strategies



Wetlands

- 34,091 acres at risk in 2040
- Represents 4% of the wetland (sensitive vegetation) acreage in the CSEC planning region
- Provides regional picture of potential change (not realized change)
- Regulatory program provides actual verification and monitoring



Since traditional sources cannot meet future demand while protecting water resources...

The CSEC RWSP identifies projects to meet future water demands

- water supply development (53 projects at 87.5 mgd)
- water resource development (12 projects at 59.0 mgd)
- water conservation potential (38.2 mgd)
- additional reclaimed water provision (44.8 mgd)

Conclusions

- **Projected 75 mgd increase in demand from 2015 to 2040 cannot be met with traditional sources alone without predicted impacts to MFL water bodies, groundwater quality, wetlands**
- **CSEC RWSP identifies 229.4 mgd of projects and measures that will meet future demand, while protecting water resources and related natural systems**



Repeal of Rule 40C-23.001, F.A.C.

- Designated the entire District as a Water Resource Caution Area (WRCA) in 1996
- WRCA are areas designated by districts that have existing/projected water resource problems
- Domestic wastewater treatment facilities in WRCA are subject to reuse requirements in s. 403.064, F.S.



Repeal of Rule 40C-23.001, F.A.C.

- **With approval of the CSEC RWSP, entire District is designated a WRCA via the three regional water supply plans**
- **No longer a need for WRCA designation by rule**



Requested Actions on Agenda Item 4

**Approval of the Central Springs/East Coast
Regional Water Supply Plan and associated
appendices, and authorization to publish related
Notice of Proposed Rule for the repeal of
40C-23.001, F.A.C.**

