



Levee System Summary Ocklawaha River Basin Marion County, Florida

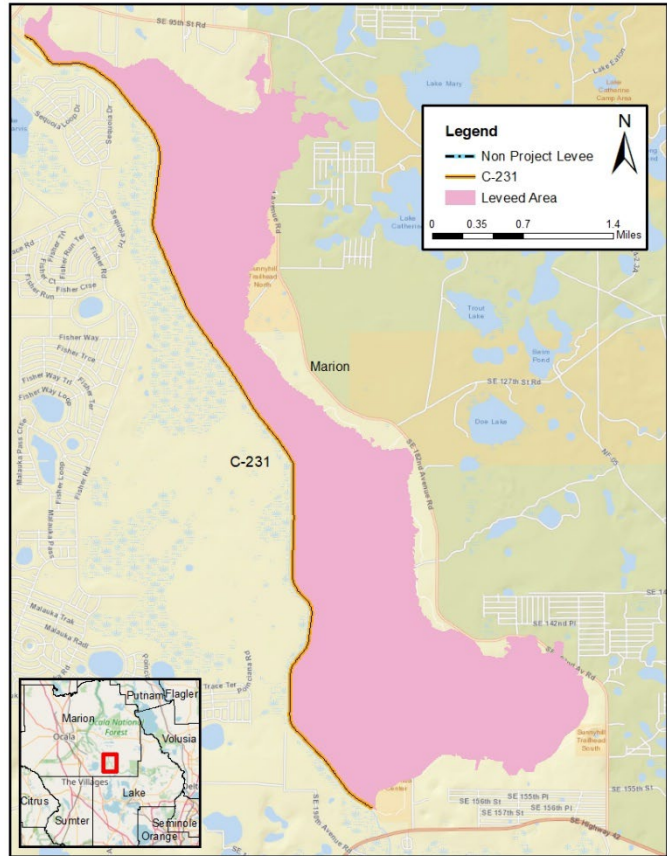
U.S. ARMY CORPS OF ENGINEERS

BUILDING STRONG®

July 20, 2022

Project Description: The Ocklawaha River Basin levee system is located in Marion County, Florida. The system consists of one levee segment (C-231) that was constructed to reduce the occurrence of flooding from the Ocklawaha River. The levee is approximately 12 feet high and 7 miles long. The U.S. Army Corps of Engineers (USACE) completed construction of the system in 1975 and turned it over to the St. Johns River Water Management District (SJRWMD) who is responsible for operating and maintaining the levee. The leveed area includes public and private lands, including some residential areas. There are less than 20 people that work or live behind the levee, with approximately \$1 million in property value.

Risk Characterization: The system reduces but does not eliminate the risk of loss of life or economic damages from high water or flood events in the Ocklawaha River Basin. USACE risk assessments consider flooding frequency, the likelihood of the levee breaching or overtopping, and the resulting potential loss of lives and damage to homes, businesses, and the environment. Based on the most recent risk assessment of the system in 2020, USACE considers this levee to have a low risk. The assessment identified no specific threats to the system during a high water event. The system is performing as designed. Water would be anticipated to overtop the levee in a storm that has a 1 in 500 chance of occurring in any given year. If the levee breaches or overtops, the range of flooding in portions of the leveed area could be up to 13 feet deep.



What is driving the risk?	What is being done about it?
No specific threats identified.	SJRWMD will continue to perform routine maintenance, and will increase the frequency of inspection monitoring during high water events.

FLOOD RISK ASSOCIATED WITH LEVEES CAN CHANGE
Know your risk, know your role, and take action!

What Is Important to Know? It is important to know that you are living in a leveed area. Levees may reduce flood risk, but they do not eliminate it. If you live or work in a community with levees, there is a role for you. First, know your risk. No matter how strong or well maintained a levee is, there is always risk. Second, take action to reduce your risk such as have an evacuation plan so that you can leave the area quickly if notified by the local authorities. Pay attention to flood watches and warnings. Consider purchasing flood insurance, whether it is required or not, and support your community's efforts to reduce the risks. FEMA and USACE want to ensure that communities are aware of the risk associated with levees so you can make informed decisions and plan ahead. Local communities can provide valuable information to help in managing risk. FEMA and USACE can help your community maximize your understanding of the available options associated with management of flood risk at the local level, while improving public understanding of federal roles and responsibilities.

Latest Inspection and Rating:	The most recent inspection of the levee system by USACE occurred in 2022 and was a formal inspection. The inspection identified deficient items that included sod cover, erosion, and animal burrows.
Rehabilitation Program Eligibility Status:	This levee has an active status in the USACE Rehabilitation Program. It is eligible for assistance from USACE to repair damages to the levee system caused by flooding. SJRWMD has a plan to correct complex deficiencies, called a System-Wide Improvement Framework (SWIF).
National Flood Insurance Program Status:	The Ocklawaha River Basin levee system is currently shown as non-accredited on the effective Flood Insurance Rate Map.

Ongoing Activities and Studies: SJRWMD operates and maintains the levee system according to the system specific operations and maintenance manual. Regular inspections are conducted.

Who Can I Contact? Information concerning this levee system may be obtained by contacting the following entities:

National Levee Database	https://levees.sec.usace.army.mil/#/
FEMA National Flood Insurance Program	FEMA Region IV, FEMA Flood Map Service Center website: https://msc.fema.gov/ FEMA Map Information eXchange (FMIX): 877-336-2627, or email at: FEMAMapSpecialist@riskmapcdfs.com
Levee Sponsor	St. Johns River Water Management District, Palatka, FL https://www.sjrwmd.com/
Local Emergency Management Agency	Marion County Emergency Management https://www.marionso.com/emergency-management