

St. Johns River Water Management District
FDOT Annual Mitigation Plan

----- 2025 ROAD PROJECTS -----



January 14, 2025



St. Johns River Water Management District

Palatka, Florida

2025 FDOT Road Projects

Picture on Front Cover — Halfmile Creek Mitigation Area (SJ64)

TABLE OF CONTENTS

TABLE OF CONTENTS.....	2
LIST OF FIGURES	3
Wetland Mitigation Plan For Florida Department Of Transportation Projects Within The St. Johns River Water Management District.....	0
INTRODUCTION	0
Table 1. FDOT 2025 New Road Project And Projected Wetland Impacts	1
FDOT WETLAND MITIGATION WORK PLAN MEASURES	3
NEW ROAD PROJECT	4
Regulatory Mitigation Basin 23: Project Group SJ74	4
PROJECTS MOVED.....	6
Regulatory Mitigation Basin 11 and 12: Project Group SJ64 - Halfmile Creek	6
REMOVED (EXCLUDED) FROM PROGRAM	9
Table 2. Project Excluded From The FDOT Annual Mitigation Plan	9
PLAN SUMMARY	9
USE OF MITIGATION BANKS	10
APPENDIX 1: UPDATE OF MITIGATION FDOT PROJECTS	12
APPENDIX 2: SECTION 373.4137, F.S.	40
APPENDIX 3: PROJECTS REMOVED (EXCLUDED) FROM THE FDOT MITIGATION PROGRAM.....	47
APPENDIX 4: MASTER PROJECT LIST REPORT (FDOT MITIGATION PROGRAM).....	50

LIST OF FIGURES

Figure 1. FDOT 2025: SJ74 New project general location map	2
Figure 2. FDOT Program — mitigation acres completed through September 30, 2024	3
Figure 3. SJ74: New road project, within USACE HUC- 03080101- Lower St. Johns and Regulatory Mitigation Basin 23 - Lake Jesup.....	5
Figure 4. SJ64: Halfmile Creek - General location of all road projects, mitigation banks and mitigation site.....	7
Figure 5. SJ64: Halfmile Creek mitigation plan	8
Figure 6. Mitigation Bank’s general location in the drainage basins	11

Wetland Mitigation Plan For Florida Department Of Transportation Projects Within The St. Johns River Water Management District

INTRODUCTION

The 2025 FDOT Annual Mitigation Plan is developed pursuant to the provisions of section 373.4137, *Florida Statutes*, (F.S.), to provide wetland mitigation for the Florida Department of Transportation (FDOT). Section 373.4137, F.S. (Appendix 2), directs the water management districts to plan and implement mitigation for FDOT projects in the adopted FDOT work program for which FDOT requests the District to provide the mitigation. Before projects are identified for inclusion in a water management district mitigation plan, FDOT must consider using credits from a permitted mitigation bank. The annual plan reflects FDOT projects permitted or to be permitted by the St. Johns River Water Management District (District), Florida Department of Environmental Protection (DEP), and the U.S. Army Corps of Engineers (USACE) where mitigation bank credits are not available or cannot provide the type of mitigation needed. Section 373.4137, F.S., directs the District mitigation plans to focus on land acquisition, restoration or enhancement, and Surface Water Improvement and Management (SWIM) projects where that option represents the best mitigation. Once an FDOT project is considered for mitigation within this program it is assigned into an existing or new mitigation group, known as “SJ groups”. Any new SJ groups are sequential. There are currently 74 SJ groups within the 2025 Annual Mitigation Plan. The groups are organized by regulatory mitigation basin and related to an FDOT work program or transportation authority funding grant number for the specific projects in the SJ group.

This is the 28th Annual Mitigation Plan prepared for the FDOT Mitigation Program. An annual plan was not prepared for fiscal year (FY) 2013–2014, as FDOT elected to purchase credits for its impacts. Each annual plan addresses the funded projects for the following FDOT fiscal year and updates or modifications to previous plans. An update of active FDOT projects is provided in Appendix 1 and the Master Project List, including previously approved road projects, is provided in Appendix 4.

The 2025 Annual Mitigation Plan includes one new project, four projects moved to a different SJ group and one project removed. The new project is Widen SR417 from SR434 to CR427 (FM#437952-1) which is in an area that has no available mitigation bank credits. The project to be removed is SR5/U.S. 1 Bridge over Turnbull Creek Bridge Replacement (FM#447117-1), which did not require any mitigation. The four projects being moved from SJ71 to SJ64 include: Florida Turnpike Mainline Widening (FM#435786-1/435786-2), State Road 50 Sumter/Lake County Line to CR 33 (FM#435859-5), Turnpike (TPK) Mainline Widening MP 273-279 (FM#435784-1/435785-1), and SR 19 from CR 48 to CR 561 (FM#238319-1). These projects are being moved because the federal permits used mitigation bank credits and there is sufficient mitigation available to compensate for state impacts within the existing Halfmile Creek Mitigation Area, SJ64.

New Road Project: Widen of SR417 from SR434 to CR427 (FM#437952-1) is located in Seminole County, mitigation drainage basin 23 - Lake Jesup, USACE HUC-03080101. The purpose of this project is to improve operations and safety by widening the roadway from four lanes to eight lanes with a median. The project is 5.4 miles long (MP44-49.4) with approximately 2.5 acres of forested and 1.0 acre of herbaceous direct and secondary wetland impacts. Construction includes pavement widening, milling and resurfacing, and new stormwater treatment facilities. This project will be mitigated with new SJ74 mitigation group. There are no federal or state mitigation banks located in Regulatory Mitigation Basin (Basin) 23.

The overall proposed impacts for the new project in this year’s plan may be greater, or less than, those currently anticipated. Impact estimates are based on information provided by Florida Turnpike Authority (Table 1). Mitigation will be adjusted to account for permitted changes in impact acreages during the permitting process. The Uniform Mitigation Assessment Method will be used to determine the appropriate mitigation need and ensure that sufficient mitigation has been provided. Project mitigation SJ groups are organized by regulatory mitigation basin, and impacts are offset within the same basin unless specifically stated otherwise. During the permitting process, FDOT and the Florida Turnpike Authority are required to implement practicable design modifications to reduce or eliminate wetland impacts pursuant to subsection 373.4137(8), F.S.

Table 1. FDOT 2025 New Road Project And Projected Wetland Impacts

Mitigation Group	Regulatory Mitigation Basin	FDOT Project Name	FM#	County	Projected Impact Acres
SJ74	23 - Lake Jesup Basin (Nested)	Widen SR417 From SR434 to CR427	437952-1	Seminole	3.5
Total					3.5

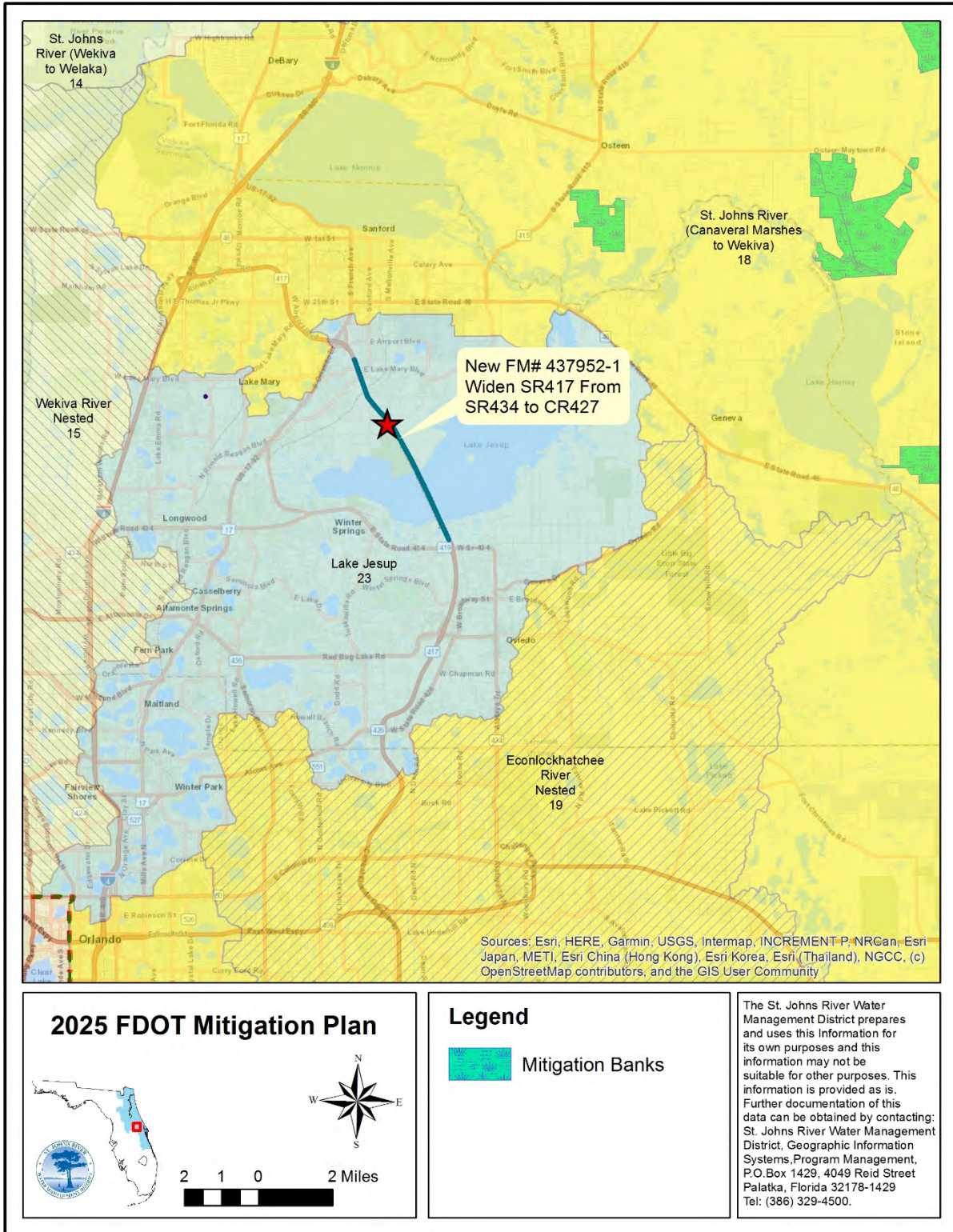


Figure 1. FDOT 2025: SJ74 New project general location map

FDOT WETLAND MITIGATION WORK PLAN MEASURES

The District is required to prepare a work plan with measurable goals and objectives. The work plan measure for this program is the total acreage of mitigation implemented per acre of wetland impact. For purposes of the work plan, mitigation is reported after issuance of required permits for the road project, the project has been implemented, and the District has been reimbursed by FDOT for the approved mitigation plan. The impact acreage includes all permitted impacts and is the sum of the larger impact (state or federal) for each project once the project is permitted and mitigation plan implemented.

Figure 2 provides a breakdown of the amount and distribution of wetland mitigation that has been implemented by the FDOT Wetland Mitigation Program as of September 30, 2024. A total of 47,530.56 acres of mitigation has been provided to offset 1,676.79 acres of wetland and other surface water impacts. These figures represent completion of mitigation for 184 road projects through September 30, 2024.

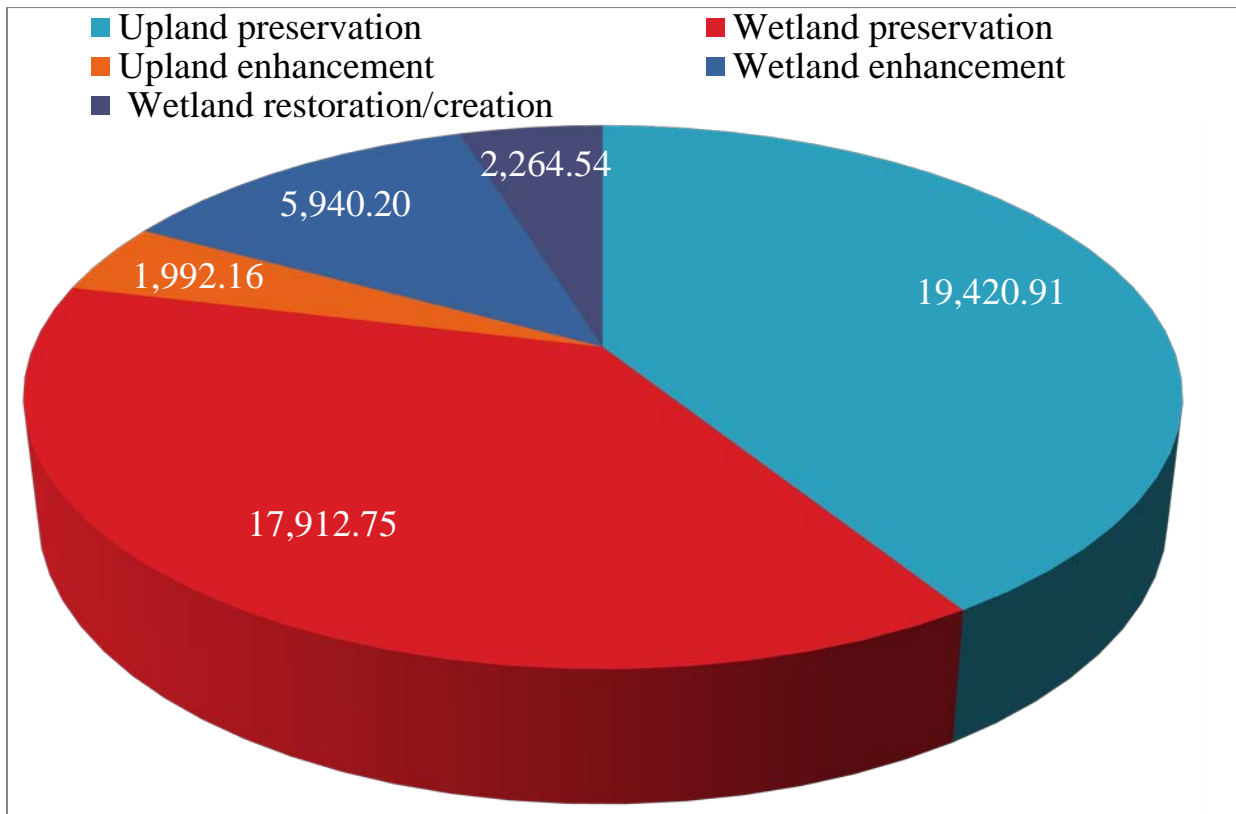


Figure 2. FDOT Program — mitigation acres completed through September 30, 2024

NEW ROAD PROJECT

Regulatory Mitigation Basin 23: Project Group SJ74

One new road project is proposed for addition to this new mitigation group (Figure 3).

Widen SR417 From SR434 to CR427

FM #437952-1

The wetland and surface water impacts for the state and federal permits for the above road project is estimated to have 2.5 acres of forested and 1.0 acre of herbaceous wetland impacts. The SJ74 mitigation plan will offset the wetland impacts within Basin 23 that are not offset by mitigation bank credits in the respective basin (Figure 6).

The mitigation plan for this SJ group is still in the planning phase. Impacts will be offset by the preservation, restoration, and enhancement of additional conservation lands in Regulatory Mitigation Basin 23 - Lake Jesup within USACE HUC 03080101- Upper St. Johns. A detailed mitigation plan(s) demonstrating how the impacts will be offset will be completed concurrently with the FDOT permit application(s) as needed to address all proposed impacts.

There are no federal or state mitigation banks located in Basin 23. In coordination with FDOT, the District will implement this mitigation project in Basin 23 (Figure 3).

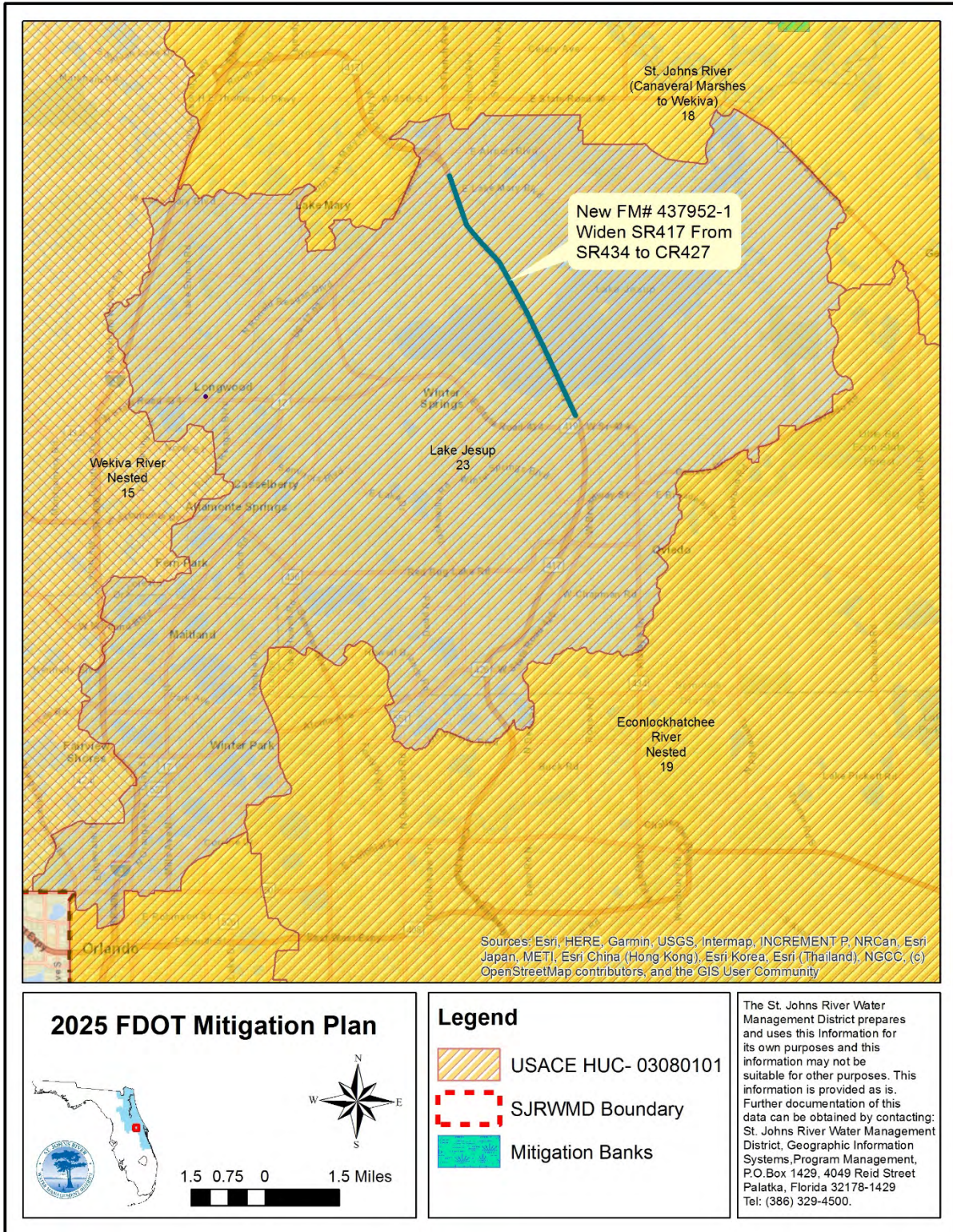


Figure 3. SJ74: New road project, within USACE HUC- 03080101- Lower St. Johns and Regulatory Mitigation Basin 23 - Lake Jesup

PROJECTS MOVED

Regulatory Mitigation Basin 11 and 12: Project Group SJ64 - Halfmile Creek

Project group SJ64 includes the following seven road projects:

SR 40 from end of four lane to CR 314	FM #410674-2
SR 40 from CR 314 to CR 314A	FM #410674-3
SR 40 from CR 314A to Levy Hammock Road	FM #410674-4
Florida Turnpike Mainline Widening	FM#435786-1/435786-2*
State Road 50 Sumter/Lake County Line to CR 33	FM# 435859-5*
Turnpike (TPK) Mainline Widening MP 273-279	FM# 435784-1 / 435785-1*
SR 19 from CR 48 to CR 561	FM# 238319-1*

Projects identified with an ‘*’ above are being moved in the 2025 Annual Mitigation Plan from group SJ58/SJ71 group to this SJ64 group for SJRWMD mitigation only.

SJ64-Halfmile Creek Mitigation Area: The wetland and surface water impacts for the state and federal permits for the above road projects are 45.46 acres of wetland impacts. The SJ64 mitigation plan will offset the wetland impacts within regulatory mitigation basins 11 and 12 that are not offset by mitigation bank credits in the respective basins (Figure 4). The four projects listed above are being moved from SJ71 group because the federal permits used mitigation bank credits and there is mitigation available for state impacts within SJ64.

The mitigation plan includes preservation and enhancement of 487 acres at Halfmile Creek Mitigation Area (Figure 5). The work on-site includes wetland and upland mowing and plantings, low water crossing installation, trail road improvements, and invasive and nuisance species control. Additional planting and trail road work is planned for the future. This project will be managed long term by the SJRWMD as part of the Silver Springs Conservation Area.

Regulatory Mitigation Basin 11 has one mitigation bank, Mill Creek Mitigation Bank, which has forested credits available, but not herbaceous credits. Four mitigation bank service areas occur within Regulatory Mitigation Basins 12 and nested Basin 13: Hammock Lake Mitigation Bank, Missing Link Mitigation Bank, Lake Louisa/Green Swamp Mitigation Bank, and Emeraldalda Mitigation Bank. Hammock Lake Mitigation Bank received state approval (Southwest Florida Water Management District) in 2009, Lake Louisa/Green Swamp Mitigation Bank received state approval in 1995, Emeraldalda Mitigation Bank received state approval in 2020, and Missing Link Mitigation Bank received state approval in 2022. These mitigation banks did not have sufficient number and type of credits available to offset the state and federal mitigation needed for these projects during implementation of the mitigation plan.

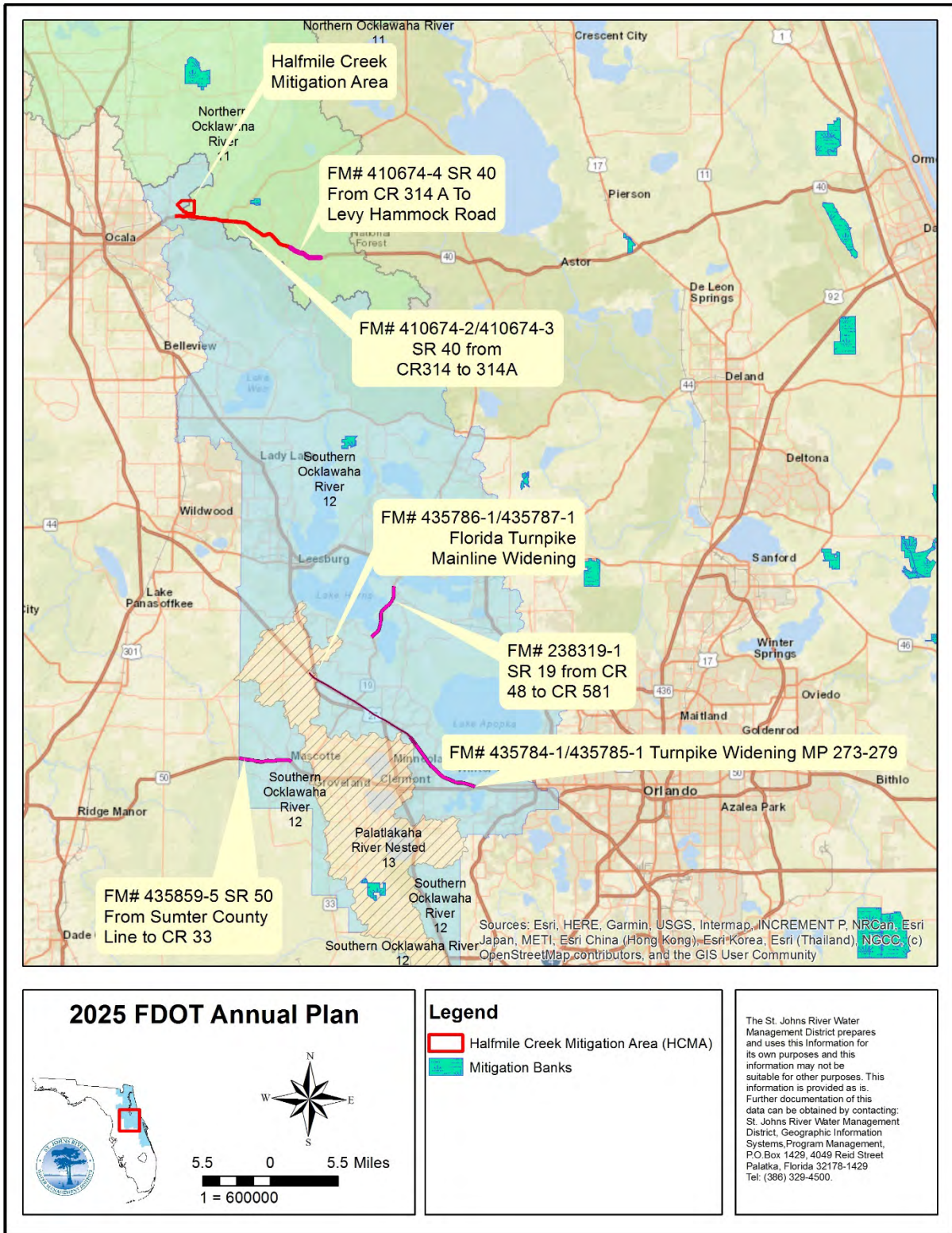


Figure 4. SJ64: Halfmile Creek - General location of all road projects, mitigation banks and mitigation site

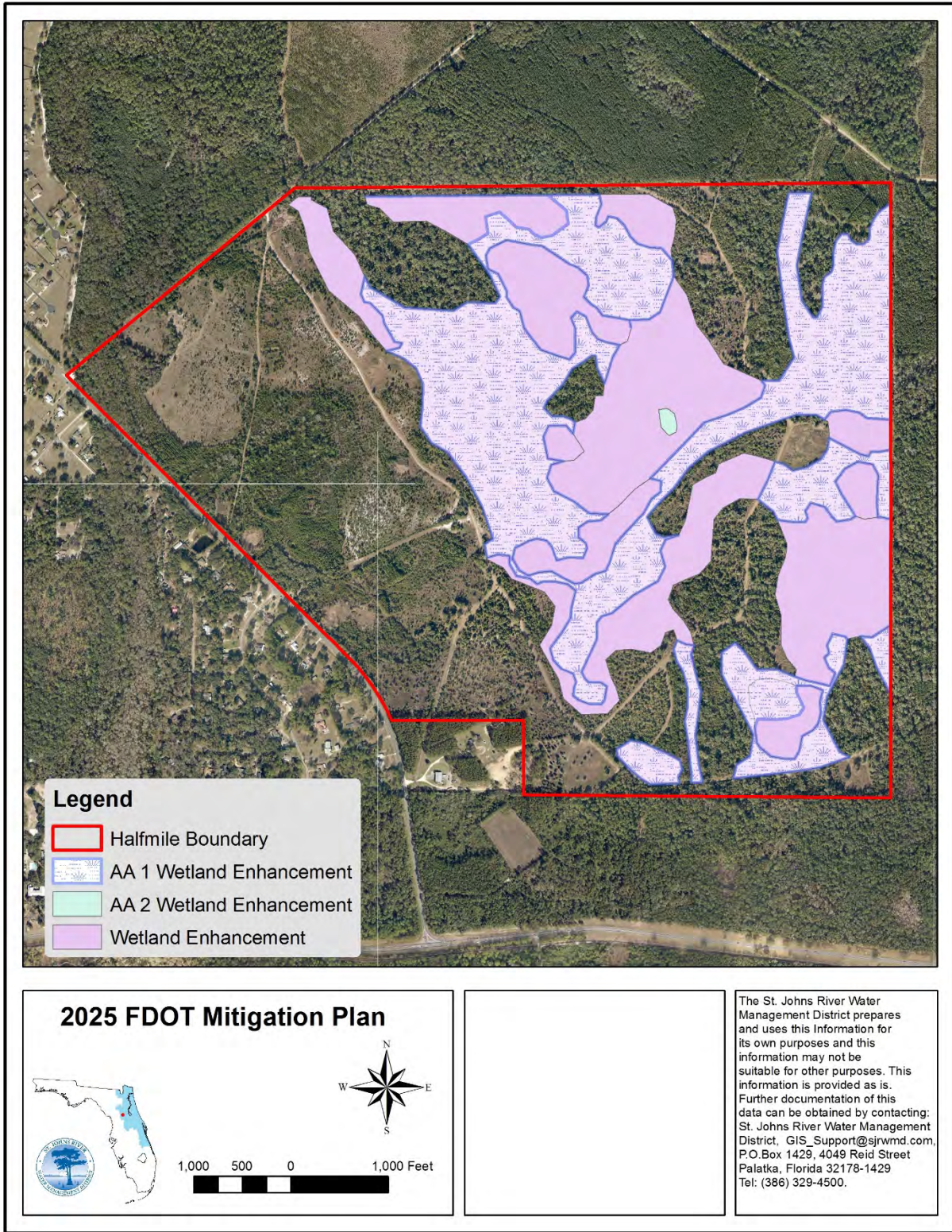


Figure 5. SJ64: Halfmile Creek mitigation plan

REMOVED (EXCLUDED) FROM PROGRAM

Paragraph 373.4137(4)(a), F.S., provides that “specific projects may be excluded from the mitigation plan, in whole or in part, and are not subject to this section upon election by the Department of Transportation, a transportation authority if applicable, or the appropriate water management district.”

There is one project being removed (excluded) from the 2025 Annual Mitigation Plan because the project did not need mitigation (Table 2). A master list of all projects previously removed from the FDOT Annual Mitigation Plan is provided in Appendix 2. The removed project is highlighted in red. These projects have also been removed from the Master Project List Report (Appendix 3 - in red).

Table 2. Project Excluded From The FDOT Annual Mitigation Plan

SJ Group	Regulatory Mitigation Basin	FDOT Project Name	FM#	Plan Year Excluded	County	Why Excluded
SJ67	21	SR5/U.S.1 Bridge over Turnbull Creek Bridge Replacement	447117-1	2025	Volusia	No mitigation required

PLAN SUMMARY

FDOT has determined implementation of a mitigation work plan consistent with Section 373.4137, F.S., is currently the most ecologically preferable and/or cost-effective mitigation option to offset impacts associated with the SR417 widening project because there is no mitigation bank credit available in the impact drainage basin. Concurrently, SR 5/U.S. 1 Bridge over Turnbull Creek Bridge Replacement (FM#447117-1) has been removed from SJ67 because no mitigation was required. In addition, the following four projects have been relocated from SJ71 to SJ64: Florida Turnpike Mainline Widening (FM#435786-1/435786-2), State Road 50 Sumter/Lake County Line to CR 33 (FM# 435859-5), Turnpike (TPK) Mainline Widening MP 273-279 (FM# 435784-1 / 435785-1) and SR 19 from CR 48 to CR 561 (FM# 238319-1). These projects are being moved to a different existing SJ group because the federal permits used federal mitigation bank credits and there is sufficient mitigation to compensate for state impacts within the existing Halfmile Creek Mitigation Area (SJ64).

USE OF MITIGATION BANKS

Paragraphs 373.4137(2)(c) and 373.4137(4)(b), F.S., require FDOT to consider the use of permitted mitigation banks prior to inclusion of a project in a water management district mitigation plan. Please reference Figure 6 and individual basin figures listed below for the location of mitigation banks in their respective drainage basin boundaries.

The 2025 mitigation plan includes one new project, one project removed, and four projects moved to a different SJ group for the 2025 FDOT Annual Mitigation Plan. The new project is Widen SR417 from SR434 to CR427 (FM#437952-1).

The new project has been added to mitigation plan under group SJ74-Basin 23, because there are no mitigation banks located in that basin. The removed project and the projects moved to a different SJ group are discussed in detail under the updates of individual SJ groups section of this plan.

In conclusion, FDOT has determined implementation of a mitigation work plan consistent with Section 373.4137, F.S., is currently the most ecologically preferable and/or cost-effective mitigation option to offset impacts associated with the new project in the 2025 FDOT Annual Mitigation Plan.

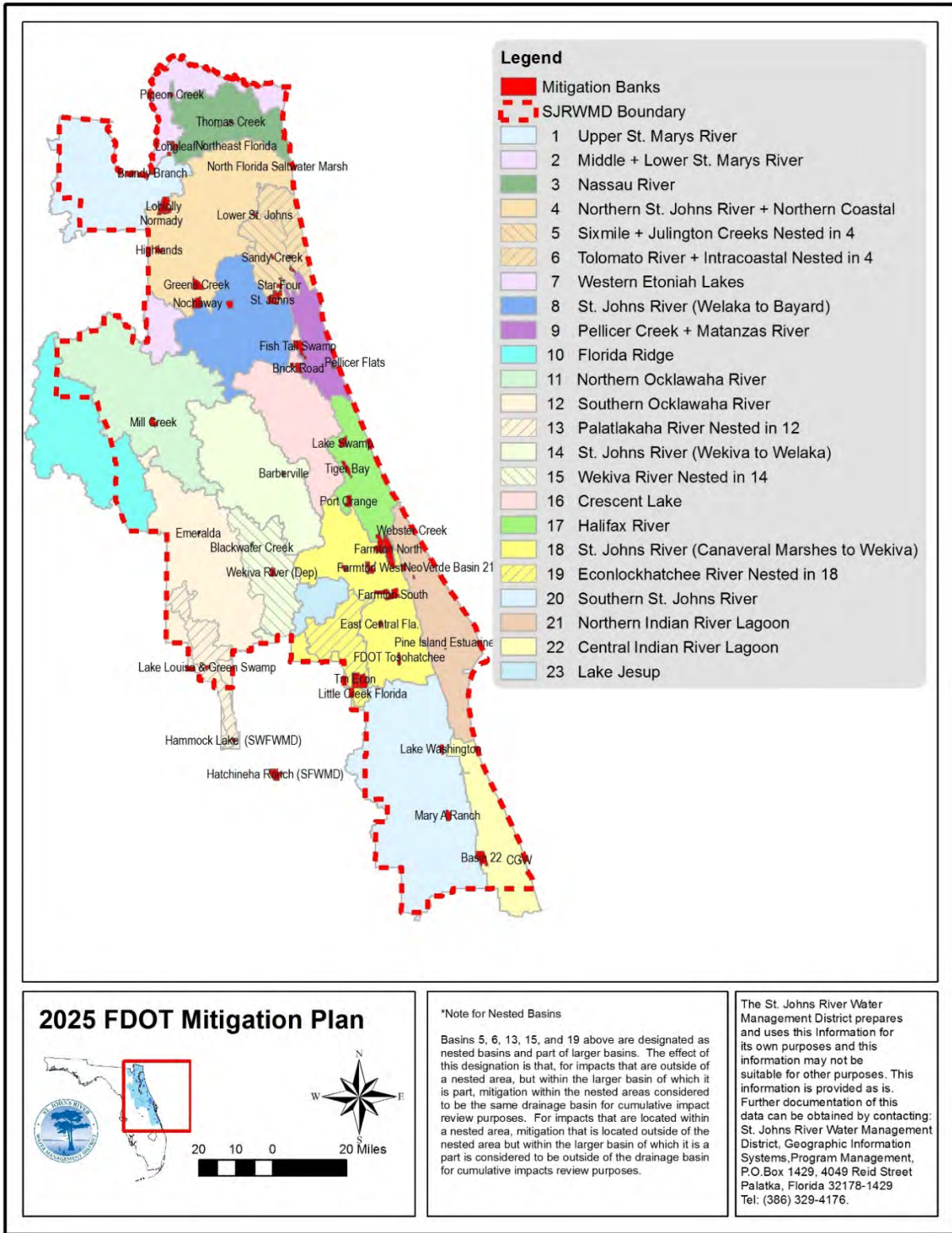


Figure 6. Mitigation Bank's general location in the drainage basins

APPENDIX 1: UPDATE OF MITIGATION FDOT PROJECTS



Regulatory Mitigation Basin 23: Project Group SJ47 - Lake Jesup

Project group SJ47 includes the following four road projects: Sign off of success has been requested from USACE (see SJ47 Figures).

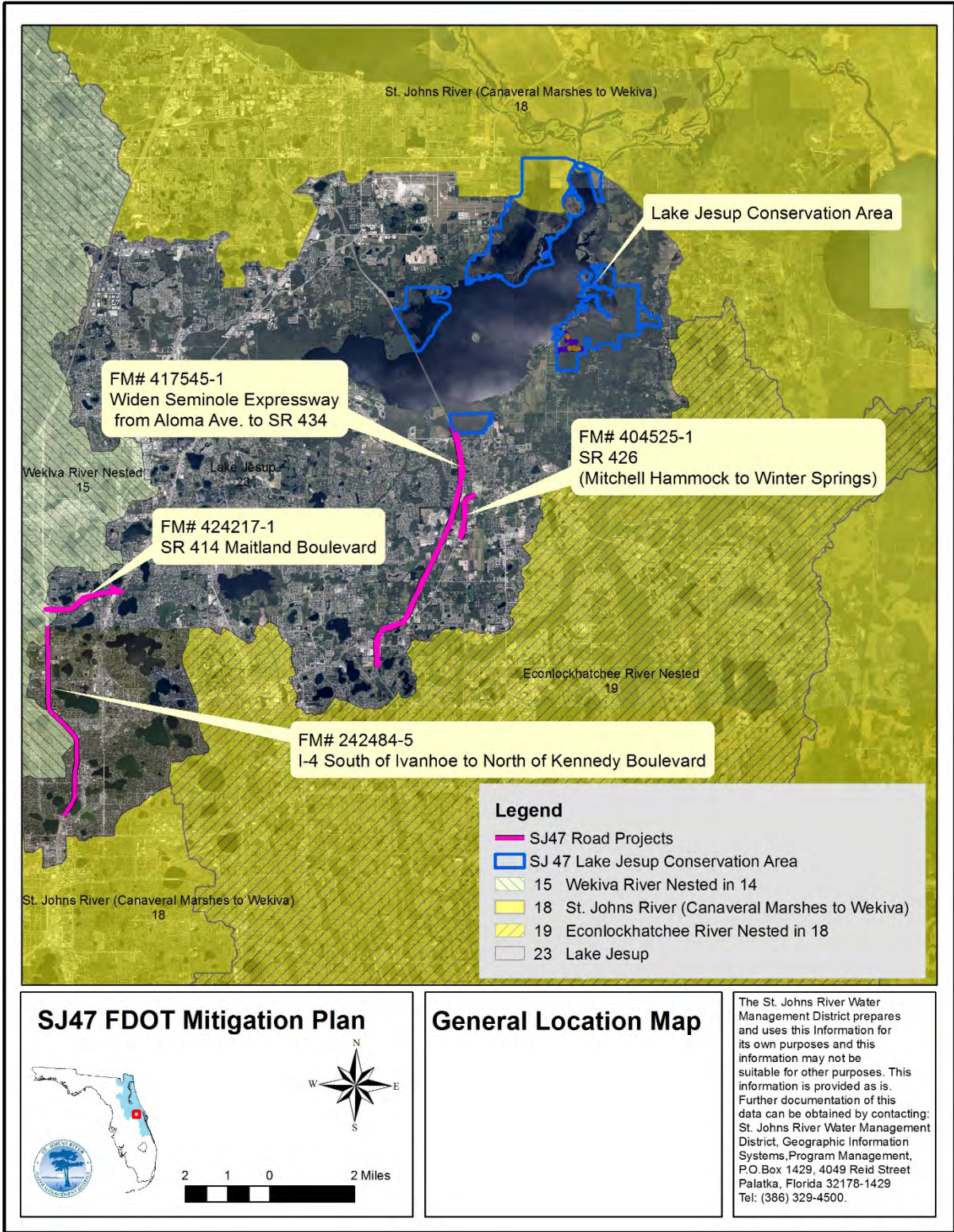
I-4 South of Ivanhoe to North of Kennedy Boulevard	FM#242484-5
SR 426 (Mitchell Hammock to Winter Springs)	FM# 404525-1
Widen Seminole Xway from Aloma Avenue to SR 434 (MP 38-44)	FM# 417545-1
SR 414 Maitland Boulevard	FM# 424217-1

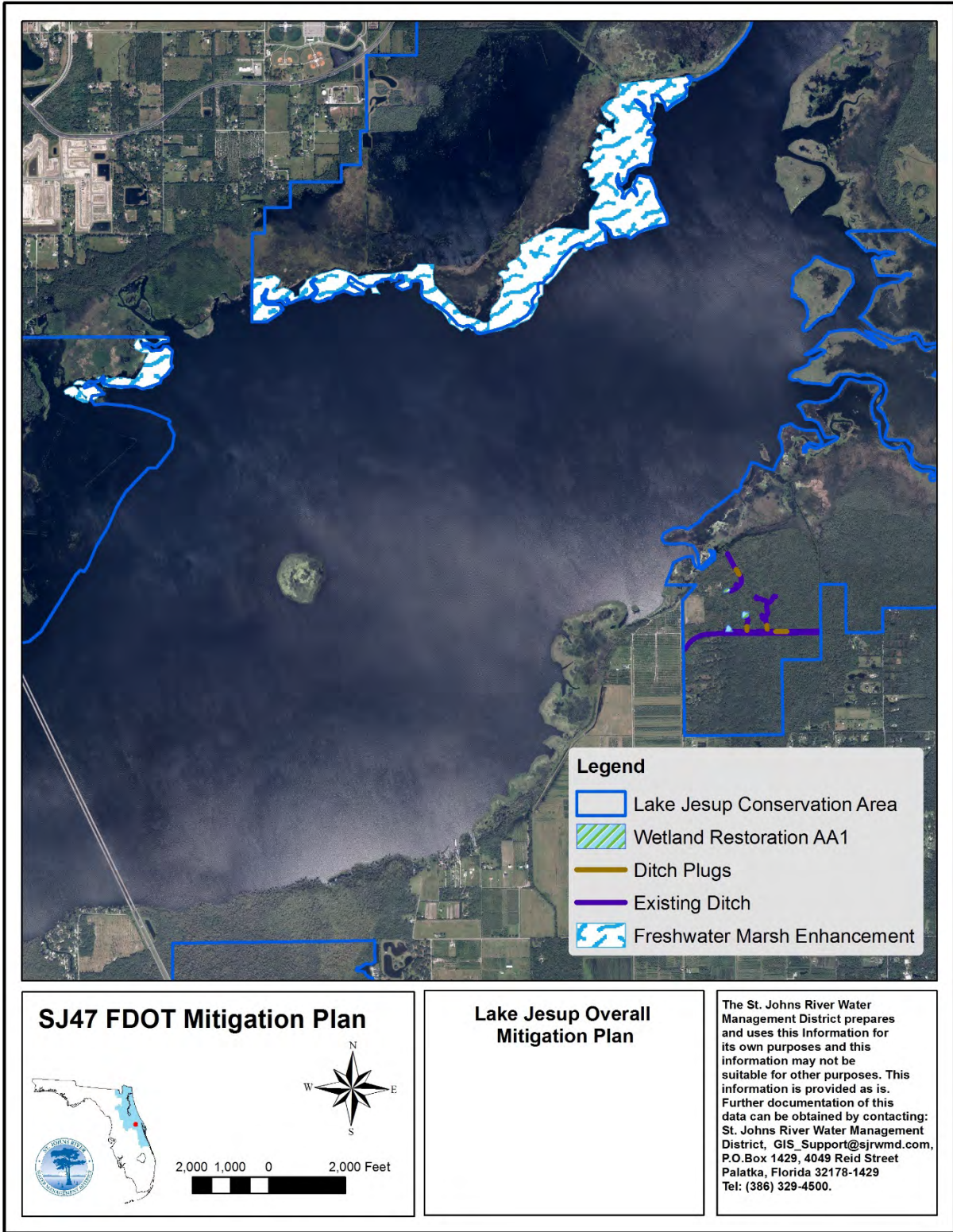
The wetland and surface water impacts for the state and federal permits for the above road projects are estimated at 11.46 acres of direct and secondary wetland impacts.

The SJ47 mitigation plan will offset the direct and secondary wetland impacts within Basin 23.

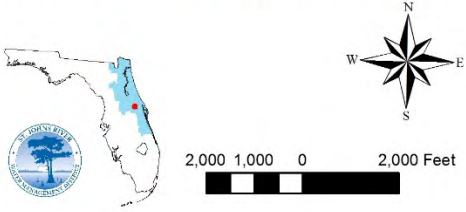
SJ47 Lake Jesup: The mitigation plan includes the acquisition, restoration, and management of a 313-acre parcel within the Lake Jesup Conservation Area. To date, the mitigation work completed includes phragmites treatment along the Lake Jesup shoreline, restoration, planting, and installation of three ditch plugs and hydrological restoration within the forested mitigation areas that includes both planting and herbicide treatment of exotics. Monitoring sign-off from USACE has been requested.

There are no federal or state mitigation banks located in Basin 23. In coordination with FDOT, the District implemented this mitigation project in Basin 23.



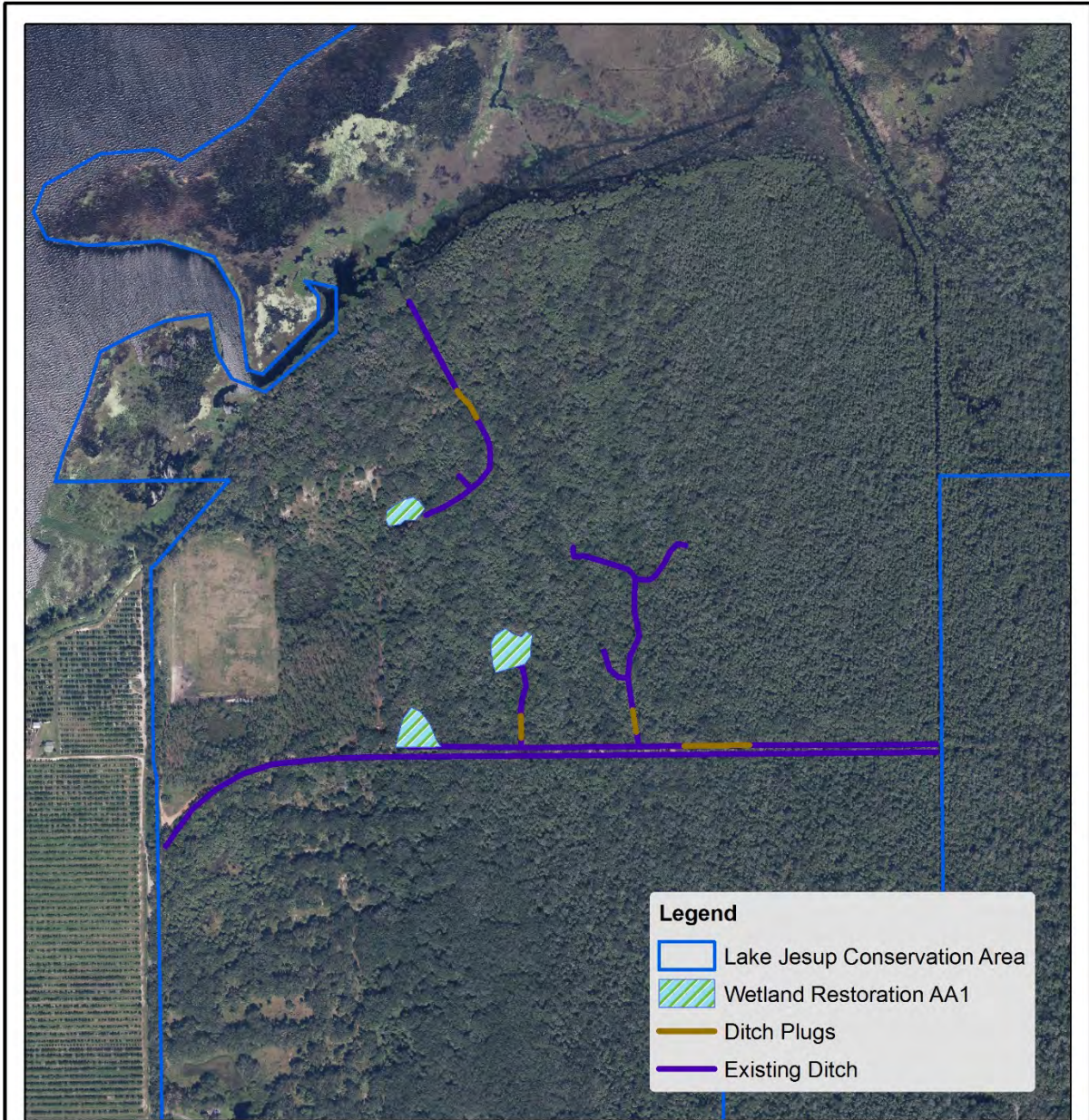


SJ47 FDOT Mitigation Plan



Lake Jesup Overall Mitigation Plan

The St. Johns River Water Management District prepares and uses this information for its own purposes and this information may not be suitable for other purposes. This information is provided as is. Further documentation of this data can be obtained by contacting: St. Johns River Water Management District, GIS_Support@sjrwm.com, P.O.Box 1429, 4049 Reid Street Palatka, Florida 32178-1429 Tel: (386) 329-4500.



SJ47 FDOT Mitigation Plan

600 300 0 600 Feet

**Lake Jesup
Detailed Mitigation Plan**

The St. Johns River Water Management District prepares and uses this information for its own purposes and this information may not be suitable for other purposes. This information is provided as is. Further documentation of this data can be obtained by contacting: St. Johns River Water Management District, GIS_Support@sjrwm.com, P.O.Box 1429, 4049 Reid Street Palatka, Florida 32178-1429 Tel: (386) 329-4500.

Regulatory Mitigation Basin 14: Project Group SJ56 - Sunland Citrus

Project group SJ56 includes the following three road projects (see SJ56 Figures):

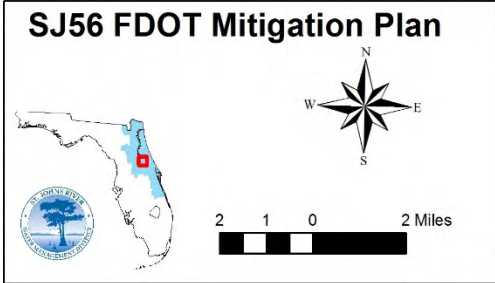
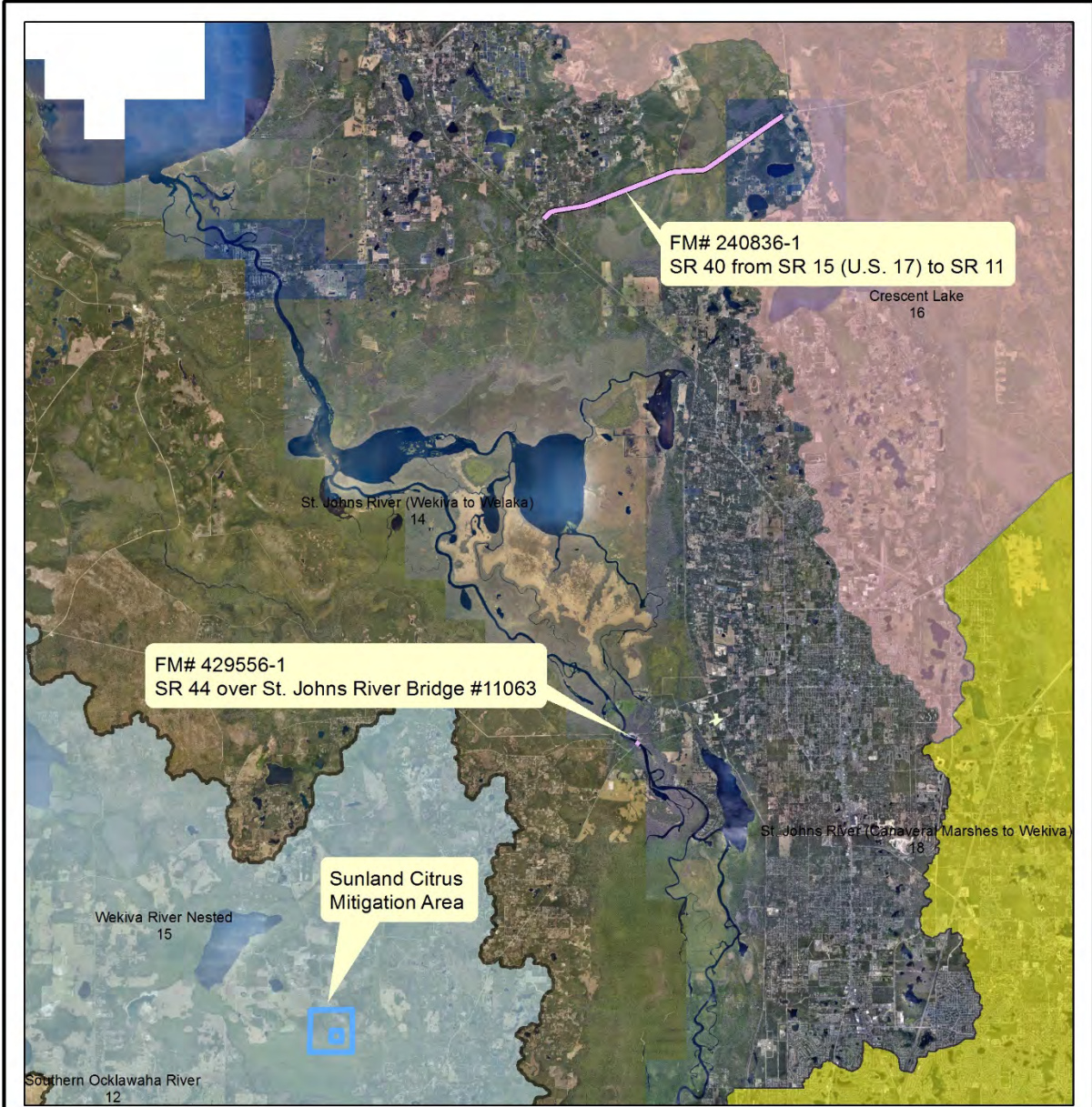
SR 40 from SR 15 (U.S. 17) to SR 11 **FM# 240836-1**
SR 44 over St. Johns River Bridge #11063 **FM# 429556-1**

Project was mitigated and signed off under SJ56, the Strawn property:
SR 15/U.S. 17 from DeLeon Springs Boulevard to SR 40 **FM# 410251-1**

The total wetland and surface water impacts for projects in SJ56 is 55.30 acres for the District and for USACE. In coordination with FDOT, the District implemented the following mitigation project in Basin 14 .

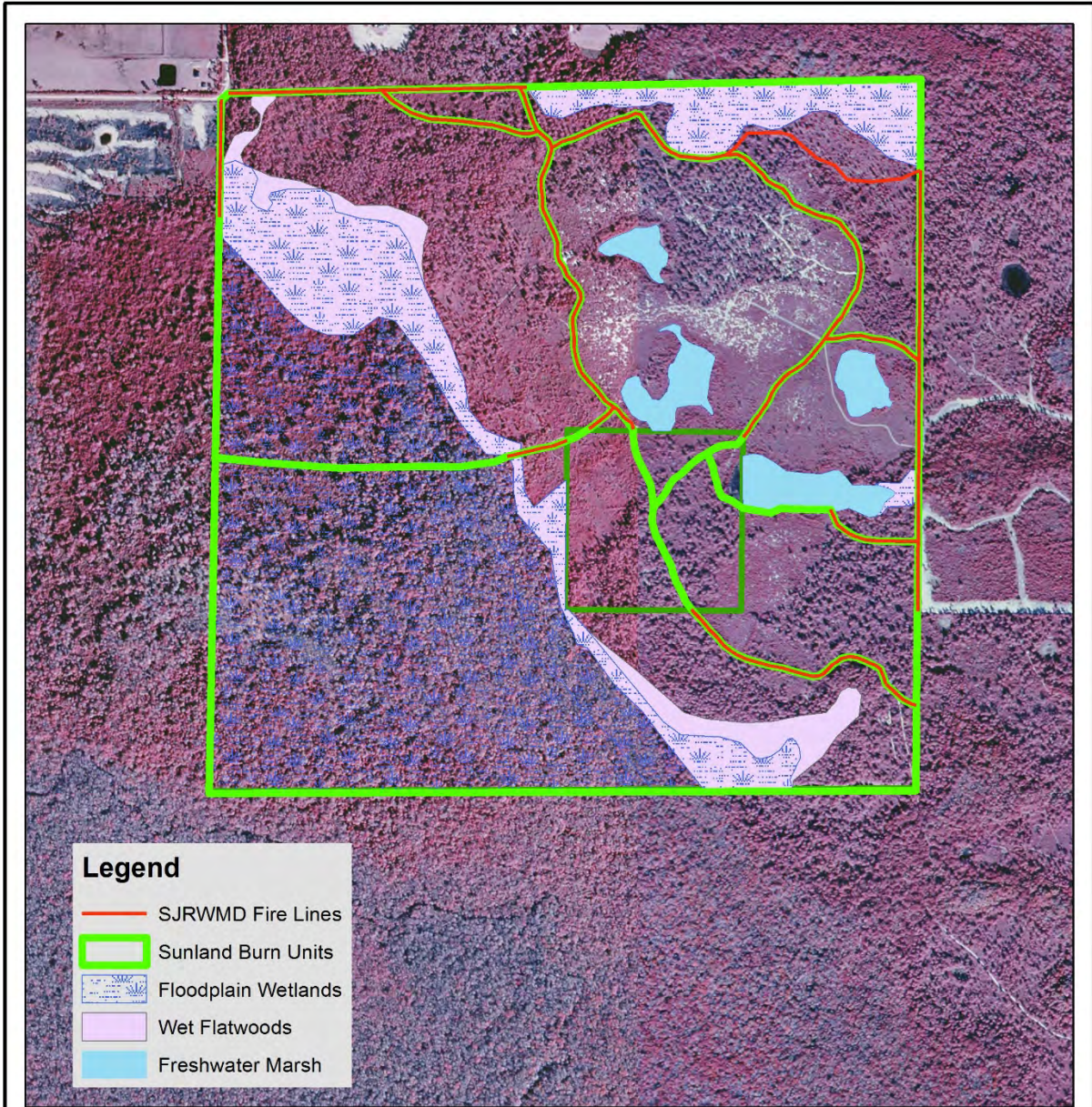
SJ56 Sunland Citrus Mitigation Area: The mitigation plan includes the acquisition and enhancement of a 596-acre parcel within the Sunland Citrus Mitigation Area. The acquisition was completed in 2017. To date, the mitigation work completed includes cutting new fire lines, harrowing the lines, pine timber marking, pine thinning, Florida Natural Area Inventory assessment, trail road improvements, new gate, drum chopping and burning the pyrogenic communities. The property will be managed by the Florida Forest Service and is adjacent to the Seminole State Forest. To date the FDOT is currently in the process of extending the USACE permits. Once the permits are constructed and the plan has been completed, a request for monitoring sign off from USACE will be requested.

When this project was implemented, there were three mitigation banks located within Basin 14 (or Basin 15 nested in Basin 14) that could satisfy both state and federal mitigation requirements: Barberville, Blackwater Creek, and Wekiva River mitigation banks. The mitigation needs for all projects in-basin at the time of permitting exceeded the available credits of the appropriate type from all three mitigation banks combined.



General Location Map

The St. Johns River Water Management District prepares and uses this information for its own purposes and this information may not be suitable for other purposes. This information is provided as is. Further documentation of this data can be obtained by contacting: St. Johns River Water Management District, Geographic Information Systems, Program Management, P.O. Box 1429, 4049 Reid Street Palatka, Florida 32178-1429 Tel: (386) 329-4500.



SJ56 FDOT Mitigation Plan

Mitigation Plan

The St. Johns River Water Management District prepares and uses this information for its own purposes and this information may not be suitable for other purposes. This information is provided as is. Further documentation of this data can be obtained by contacting: St. Johns River Water Management District, GIS_Support@sjrwmd.com, P.O.Box 1429, 4049 Reid Street Palatka, Florida 32178-1429 Tel: (386) 329-4500.

Project group SJ57 and SJ66 includes the following road project (see Figures SJ66):

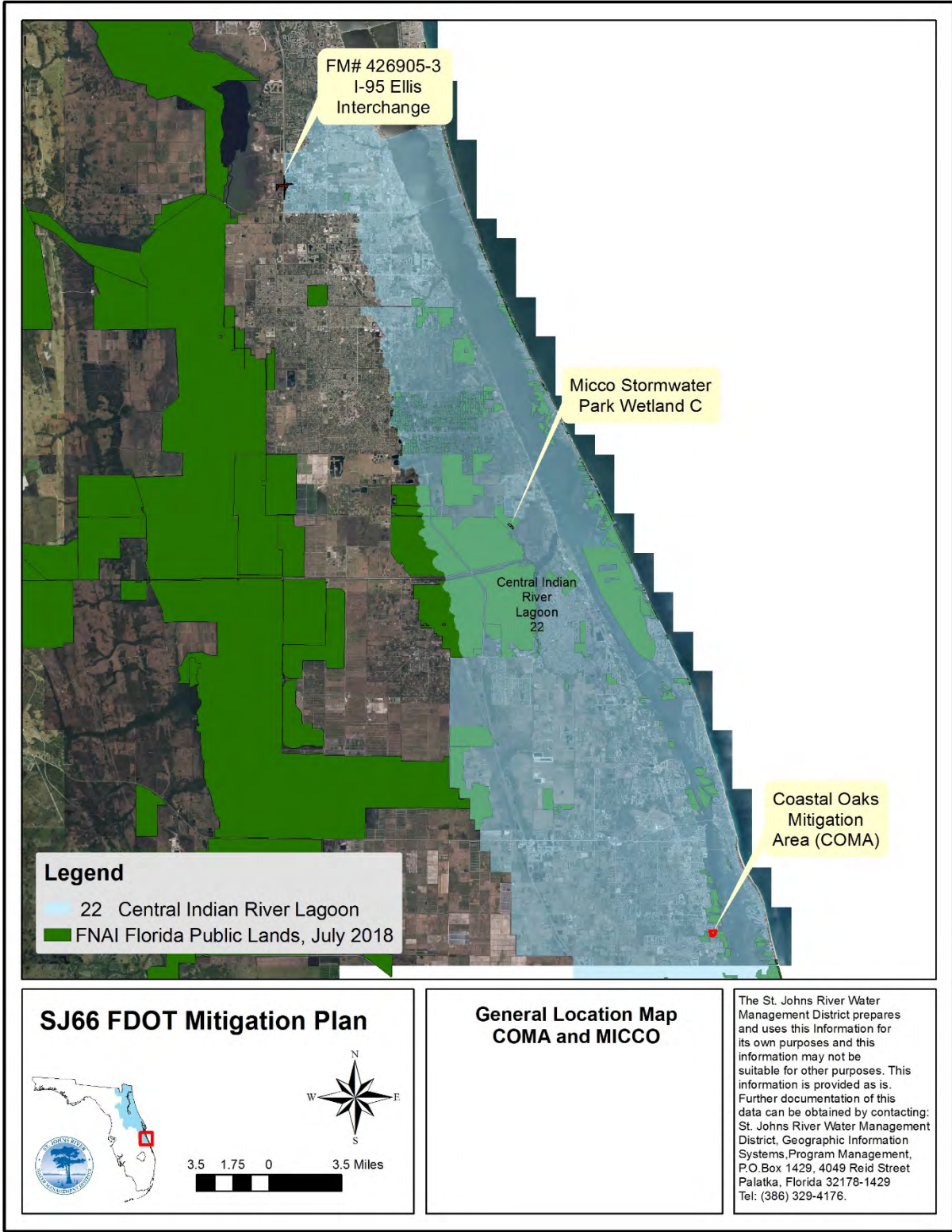
I-95 Interchange at Ellis Road/St. Johns Heritage Parkway FM #426905-3

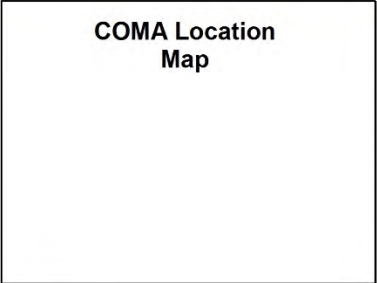
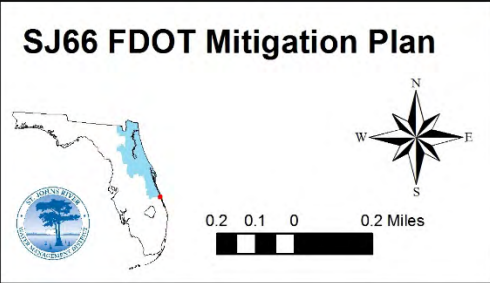
The wetland and surface water impacts for the project in SJ66 and SJ57 are 14.32 acres of direct wetland impacts and 9.25 acres of secondary wetland impacts. The SJ66 and SJ57 mitigation plan only addresses wetland direct and secondary impacts within Basin 22 that did not have mitigation bank credits available. There is additional wetland impacts associated with this road project offset by mitigation bank credits for both state and federal requirements. In coordination with FDOT, the District implemented the following mitigation projects in Basin 22.

SJ66 Coastal Oaks Mitigation Area (COMA): The SJ66 mitigation plan offsets wetland impacts within basin 22 for the road project. The plan includes 35 acres of wetland creation, restoration, and enhancement of wetlands and includes some upland enhancement. The site was 90% covered by *Schinus terebinthifolius* (Brazilian pepper). The mitigation work completed includes clearing, grubbing, removal of wastewater treatment, grading down to wetland elevations, planting uplands and wetlands, and herbicide treatment throughout the site. Additional mitigation activities include herbicide treatment of invasives and planting of wetlands. This project will be managed long term through a partnership with the Indian River Land Trust.

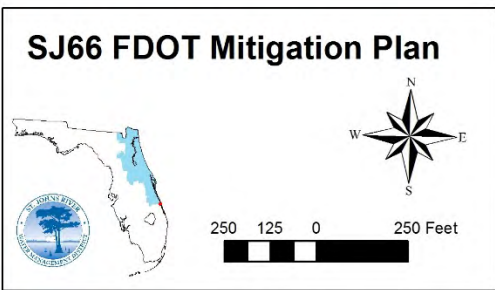
SJ57 Micco Stormwater Park (FKA — Wheeler Groves): The SJ57 mitigation plan offset a small portion of wetland impacts for the road project. The Micco site offset 0.967 functional gain units associated with the roadway wetland impacts. The plan includes 35.09 acres of wetland restoration and creation within a historic portion of Herndon Swamp located within a larger District project. The proposed site has been cleared, graded, and control structures have been implemented to maintain water levels on the site. This project will be managed long term by the District. This project received sign-off from USACE in fiscal year (FY) 2021-22.

When this project was implemented, Regulatory Mitigation Basin 22 had only three mitigation banks: CGW Mitigation Bank, Basin 22, and Bear Point Mitigation Bank. CGW Mitigation Bank received both state and federal approval, however, CGW provides only saltwater mitigation credits, which would not offset the freshwater wetland impacts of the road project in this group. Bear Point also only provides saltwater mangrove mitigation credits which is not appropriate to use as an offset for freshwater impacts. Basin 22 Mitigation Bank received state approval in December 2013, and federal approval in March 2017 after approval of the mitigation plan and acquisition of the property.



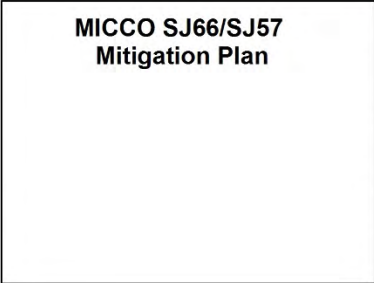
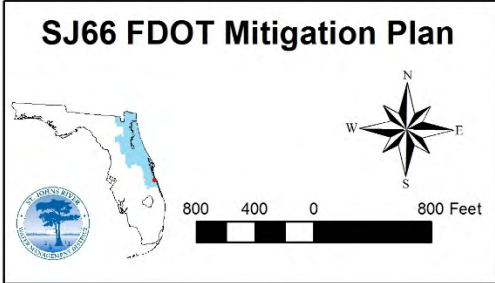
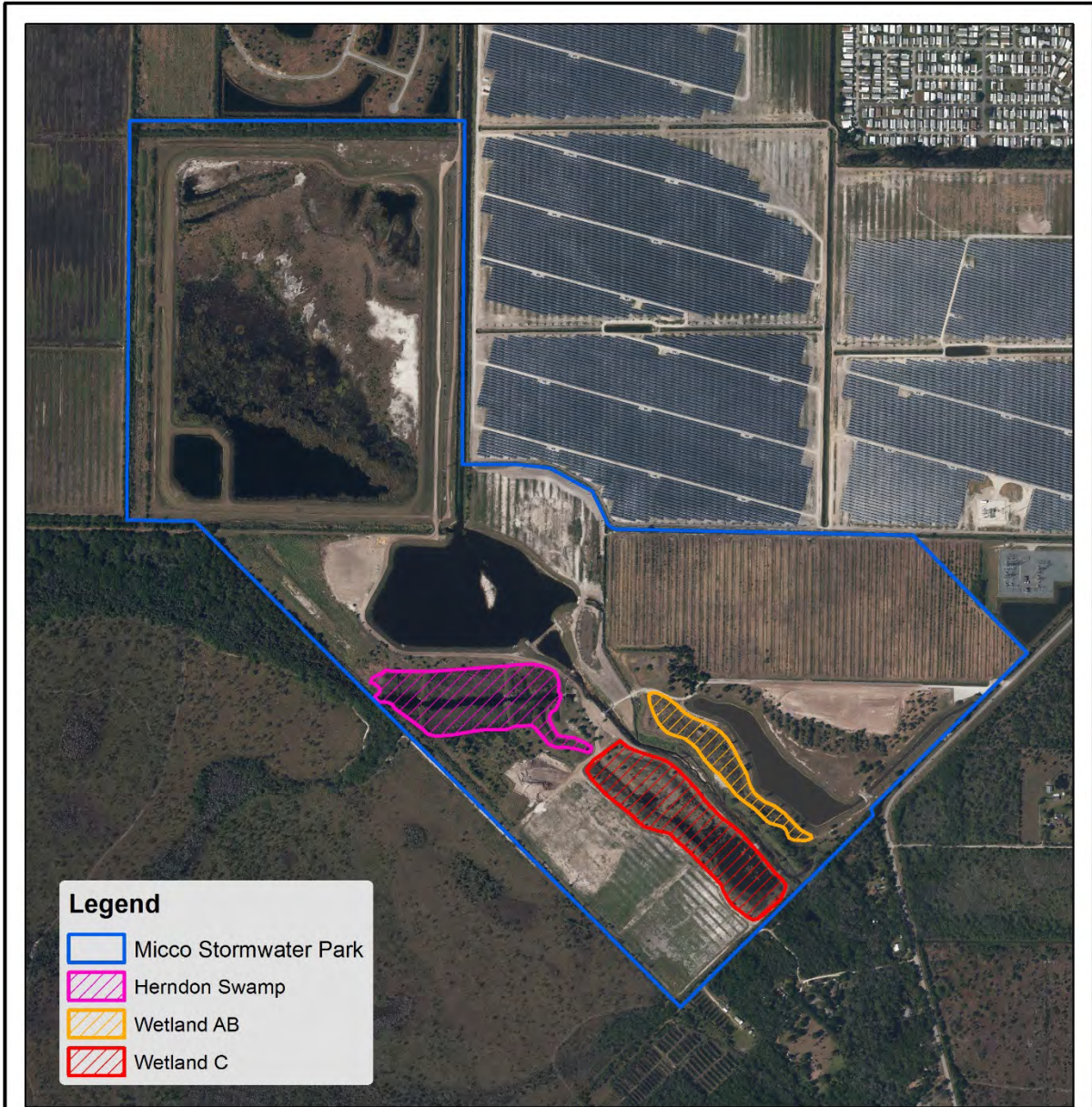


The St. Johns River Water Management District prepares and uses this information for its own purposes and this information may not be suitable for other purposes. This information is provided as is. Further documentation of this data can be obtained by contacting: St. Johns River Water Management District, Geographic Information Systems, Program Management, P.O. Box 1429, 4049 Reid Street Palatka, Florida 32178-1429 Tel: (386) 329-4176.



COMA Mitigation Plan Details

The St. Johns River Water Management District prepares and uses this information for its own purposes and this information may not be suitable for other purposes. This information is provided as is. Further documentation of this data can be obtained by contacting: St. Johns River Water Management District, Geographic Information Systems, Program Management, P.O. Box 1429, 4049 Reid Street Palatka, Florida 32178-1429 Tel: (386) 329-4500.



The St. Johns River Water Management District prepares and uses this information for its own purposes and this information may not be suitable for other purposes. This information is provided as is. Further documentation of this data can be obtained by contacting: St. Johns River Water Management District, GIS_Support@sjrwmd.com, P.O.Box 1429, 4049 Reid Street Palatka, Florida 32178-1429 Tel: (386) 329-4500.

Project group SJ67 includes the following four road projects (see SJ67 Figures).

I-95 Interchange at Viera	FM# 428238-1
SR 528 from SR 524 to east of SR 3	FM# 407402-3
SR 528 from east of SR 3 to Port Canaveral Interchange	FM# 407402-4
SR 401 Bridge Replacement	FM#444787-1

Removed (Excluded from draft 2025 Plan, no mitigation required by permits):

SR 5 /U.S. 1 Bridge over Turnbull Creek Bridge Replacement	FM# 447117-1
---	---------------------

SJ67: The wetland and surface water impacts for the state and federal permits for the above road projects are estimated to have 31.90 acres.

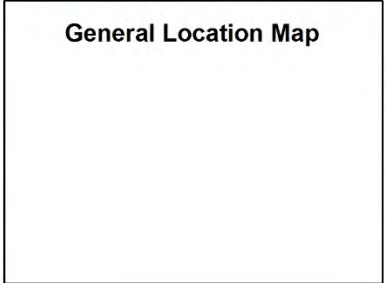
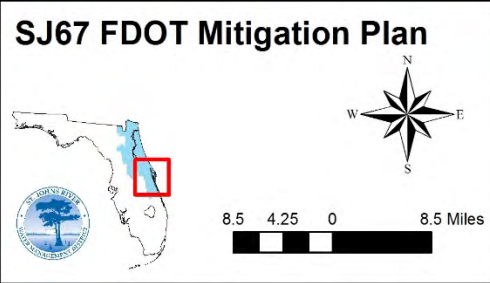
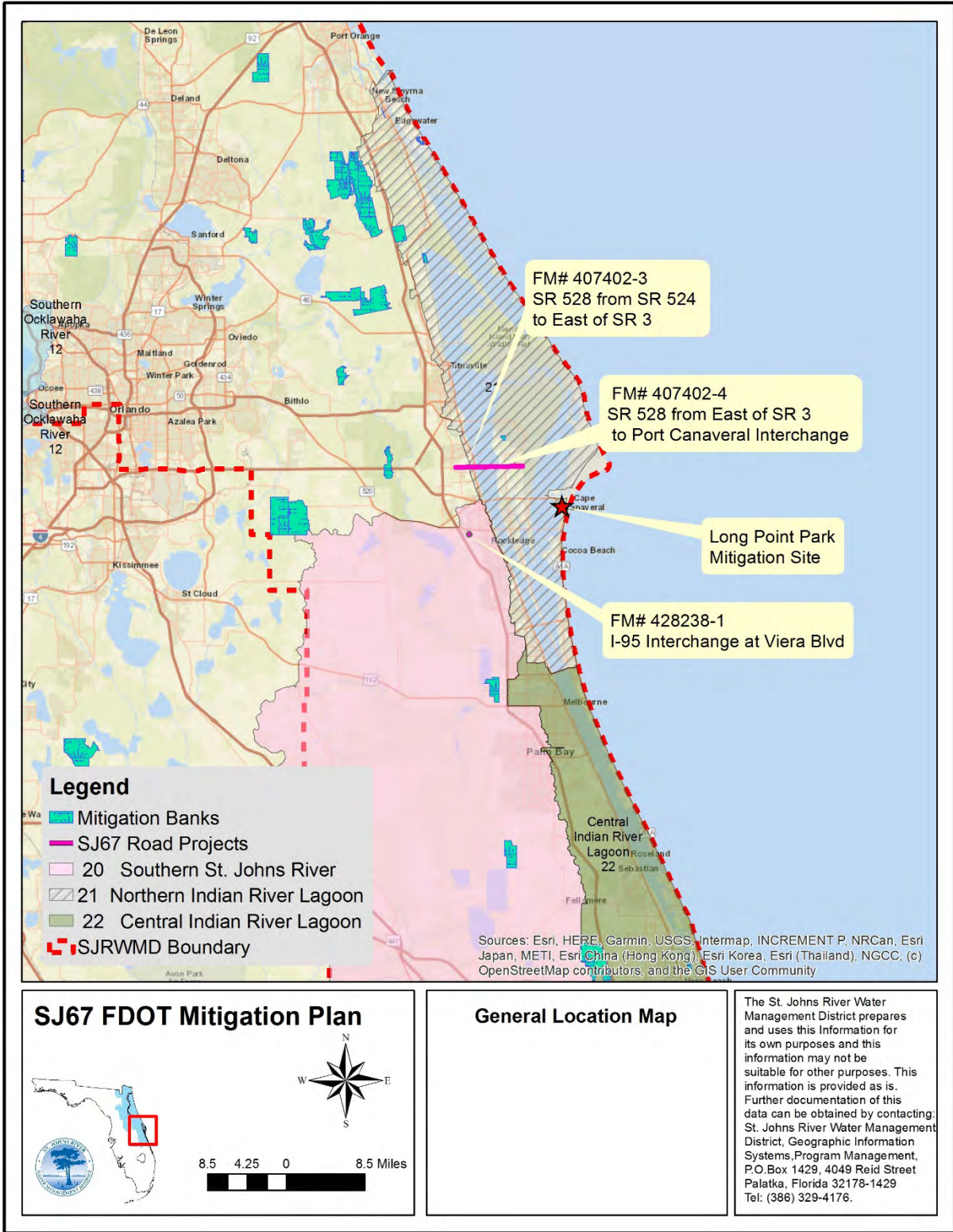
A portion of the mitigation for impacts has begun with the Long Point Park Project. The participation agreement with the City of Cape Canaveral for restoration of 4.3 acres of wetlands along the Indian River Lagoon is active. The Segment 3 portion of the project will be used to offset a portion of the mangrove and essential fish habitat (EFH) impacts on eligible projects from those listed above. The District recognizes significant environmental, water resource and conservation values of the property. The District also recognizes the opportunity to partner with the city to conduct restoration and enhancement work that complements the city's long-term management objectives for the property.

The full mitigation plan for this SJ group is in the work phase. Impacts will be offset by the preservation, restoration, and enhancement of additional conservation lands in Regulatory Mitigation Basin 20 and 21. Currently a twelve-step mitigation plan has been submitted to the USACE under the FDOT permit application(s). We are concurrently working with the FDOT, USACE to complete and finalize this plan.

Regulatory Mitigation Basin 20 has four mitigation banks: Mary A Ranch Mitigation Bank, Lake Washington, Lucky L Ranch, and Treasure Coast Mitigation Banks. Mary A Ranch Mitigation Bank ledger is currently frozen for both state and federal credits. Lake Washington Mitigation Bank has only herbaceous emergent freshwater credits available. Lucky L Ranch Mitigation Bank has state credits available but has not yet obtained federal approval. Treasure Coast has no state or federal credits available.

Regulatory Mitigation Basin 21 has four mitigation banks: Green Wing, NeoVerde, Webster Creek, and Pine Island. None of these banks have federal credits available. Pine Island and Green Wing Mitigation Bank have been implemented but have no state credits available. NeoVerde Mitigation Bank has both forested and herbaceous freshwater state credits available but no marine state credits. Webster Creek Mitigation Bank has state forested and herbaceous marine credits.

The anticipated mitigation needs and type for all projects in-basin cannot be appropriately compensated by the available credits from the above mitigation banks for both the state and federal mitigation credits.



The St. Johns River Water Management District prepares and uses this information for its own purposes and this information may not be suitable for other purposes. This information is provided as is. Further documentation of this data can be obtained by contacting:

St. Johns River Water Management District, Geographic Information Systems, Program Management, P.O. Box 1429, 4049 Reid Street Palatka, Florida 32178-1429
 Tel: (386) 329-4176.



SJ67 FDOT Mitigation Plan



0.04 0.02 0 0.04 Miles

**Mitigation Plan
 Long Point Park**

The St. Johns River Water Management District prepares and uses this Information for its own purposes and this information may not be suitable for other purposes. This information is provided as is. Further documentation of this data can be obtained by contacting: St. Johns River Water Management District, Geographic Information Systems, Program Management, P.O. Box 1429, 4049 Reid Street Palatka, Florida 32178-1429 Tel: (386) 329-4500.

Regulatory Mitigation Basin 4, 5 And 8: Project Group SJ68-First Coast Expressway (FCX)

Project group SJ68 includes the following road project (see Figures SJ68):

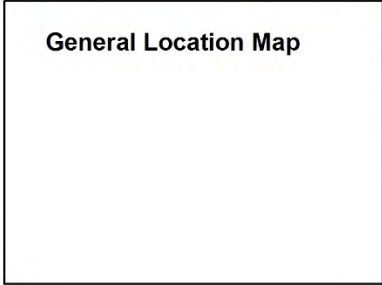
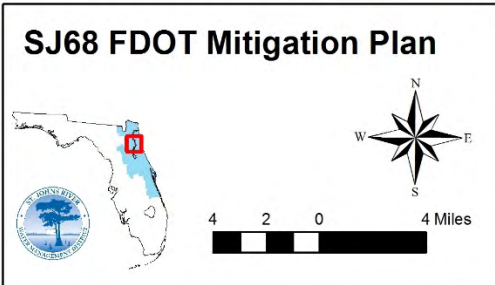
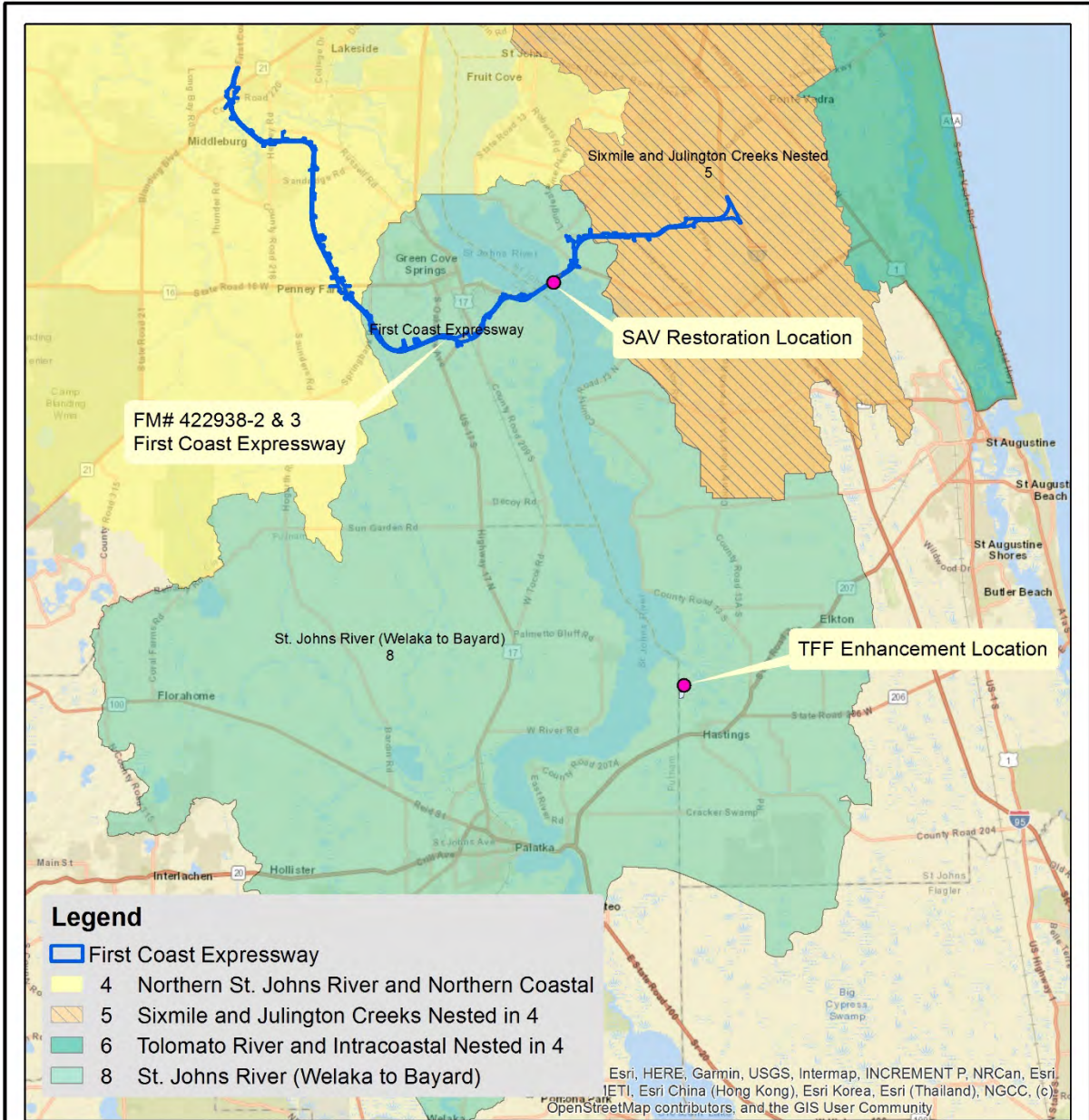
First Coast Expressway (FCX)
First Coast Expressway (FCX)

FM# 422938-2
FM# 422938-3

The wetland and surface water impacts for the project in SJ68 are 2.24 acres of direct wetland impacts for the state and 35.73 acres of tidally forested freshwater (TFF) direct wetland impacts and 12.02 acres of submerged aquatic vegetation (SAV) shading impacts for the USACE. The SJ68 mitigation plan only addresses direct and secondary wetland impacts within Basins 4, 5 and 8 that did not have the appropriate mitigation bank credit type available. The majority of wetland impacts associated with this road project are offset by mitigation bank credits for both state and federal requirements. Mitigation banks located in Basins 4, 5 and 8 did not have the appropriate credit type during permitting to offset impacts to TFF systems or SAV communities.

SJ68 First Coast Expressway: Mitigation includes the 2019 acquisition of 72.63 acres of TFF mitigation and restoration of SAV at the Shand’s Bridge. Activities include the excavation on both sides of the bridge to create SAV habitat with potential future planting and herbicide of exotics in these areas as needed.

At the time this project was added to the mitigation plan, Regulatory Mitigation Basin 4 has six banks with state and federal approval: North Florida Saltmarsh, Normandy, Loblolly, Highlands, Greens Creek, and Nochaway mitigation banks. Regulatory Mitigation Basin 5 has eight mitigation banks with state and federal approval: Lower St. Johns, Sandy Creek, St. Johns, St. Marks Pond, Star 4, Sunnyside, Town Branch, and Tupelo mitigation banks. Regulatory Mitigation Basin 8 has three mitigation banks with state and federal approval: St Johns, Sundew, and Nochaway mitigation banks. Regulatory Mitigation Basin 6 has two banks with state and federal approval: Natural Resource and St. Marks Pond. These mitigation banks did not have the appropriate credit type to offset impacts to TFF systems or SAV impacts during the time of permitting.




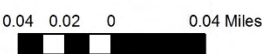


The St. Johns River Water Management District prepares and uses this information for its own purposes and this information may not be suitable for other purposes. This information is provided as is. Further documentation of this data can be obtained by contacting: St. Johns River Water Management District, Geographic Information Systems, Program Management, P.O. Box 1429, 4049 Reid Street Palatka, Florida 32178-1429 Tel: (386) 329-4176.





SJ68 FDOT Mitigation Plan

FCX - SAV Mitigation Plan

The St. Johns River Water Management District prepares and uses this information for its own purposes and this information may not be suitable for other purposes. This information is provided as is. Further documentation of this data can be obtained by contacting: St. Johns River Water Management District, Geographic Information Systems, Program Management, P.O. Box 1429, 4049 Reid Street Palatka, Florida 32178-1429 Tel: (386) 329-4176.

Regulatory Mitigation Basin 17: Project Group SJ70- RHPZ Only

Project group SJ70 includes the following three road projects (see SJ70 Figures):

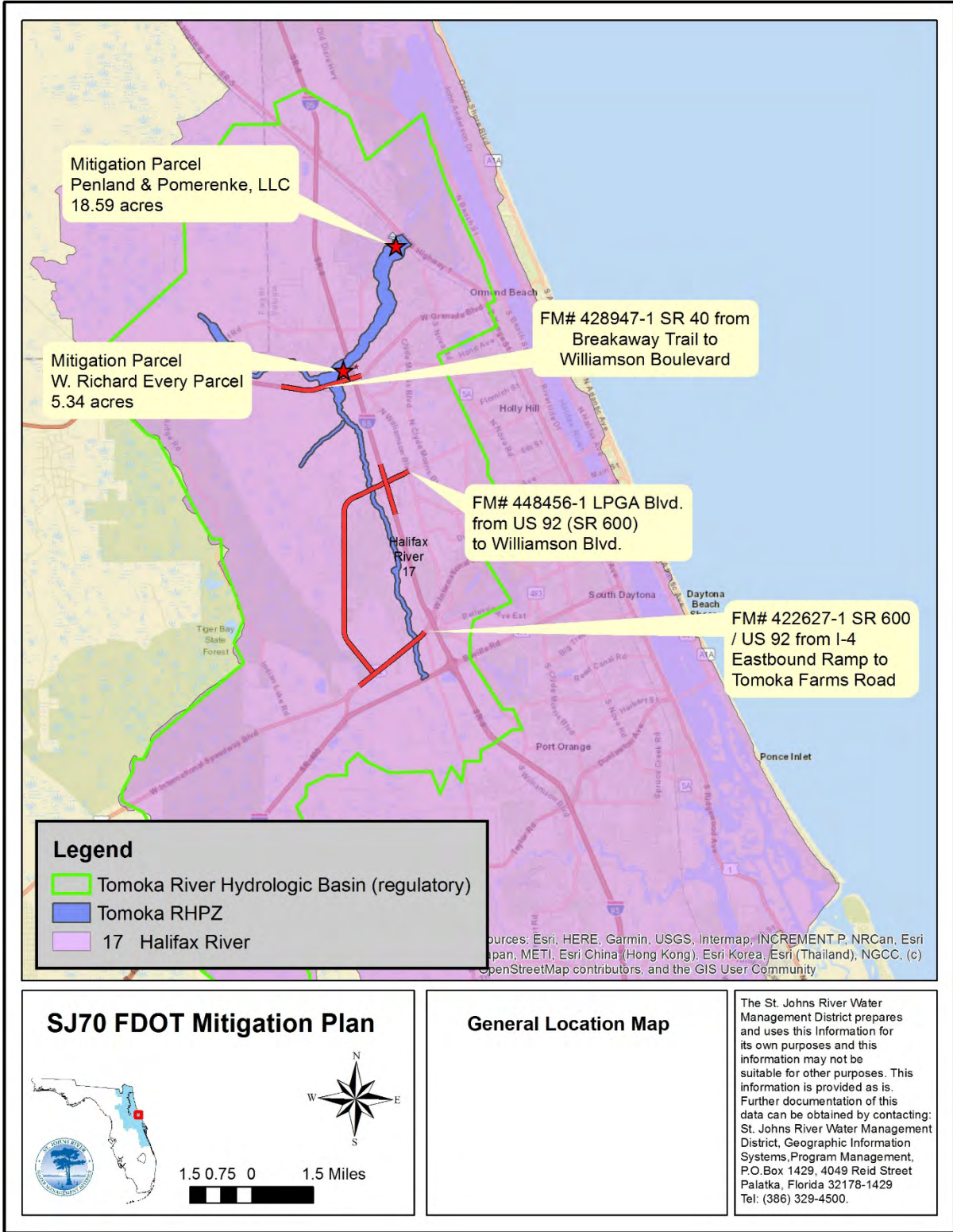
I-95 at LPGA Boulevard from US 92 to Williamson Boulevard	FM# 448456-1
SR 40 Breakaway Trail to Williamson Boulevard -RHPZ	FM#428947-1
SR 600 (U.S. 92) Interstate 4 Eastbound Ramp Tomoka Farms Road	FM#422627-1

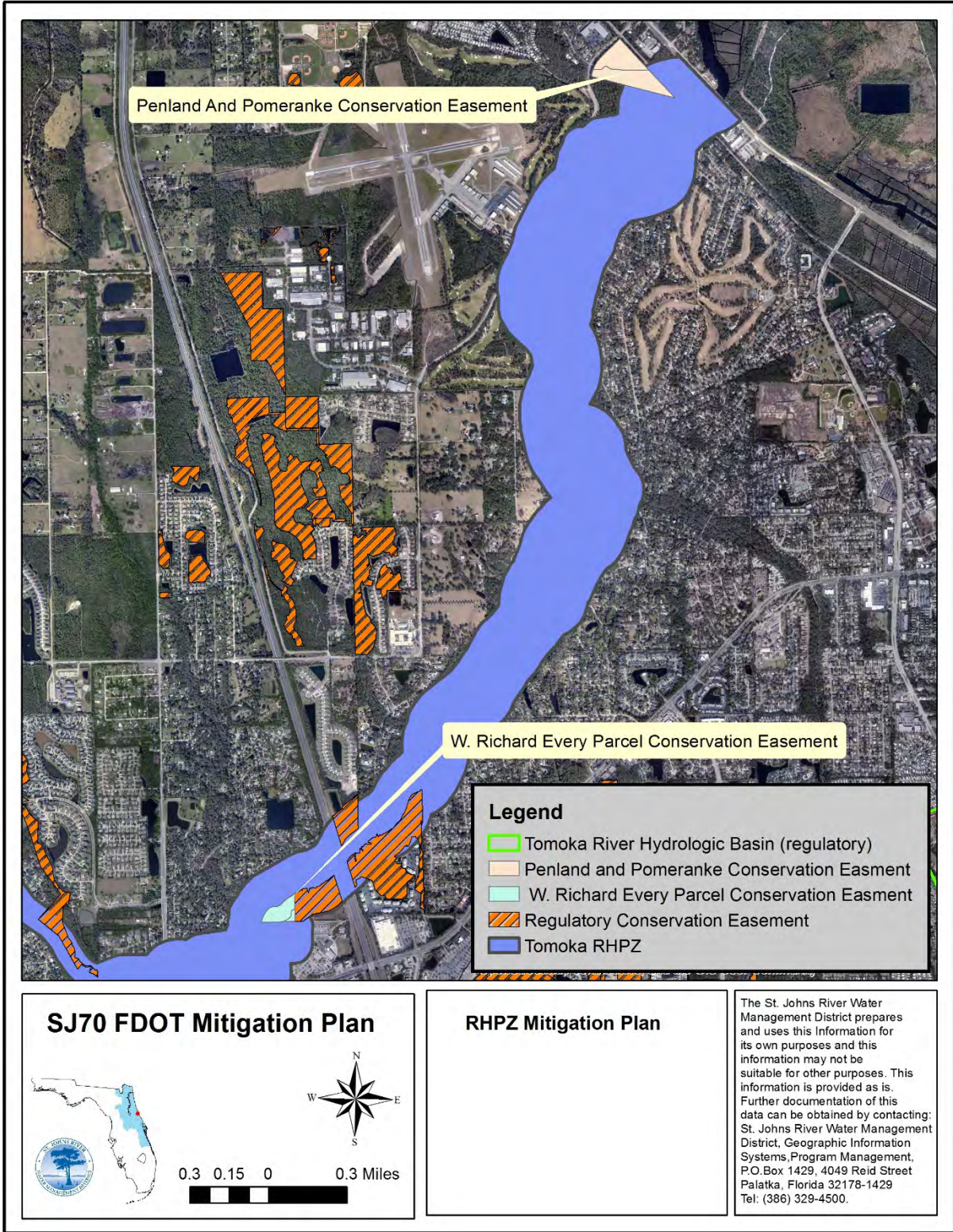
The Tomoka River Riparian Habitat Protection Zone (RHPZ) impacts in SJ70 are approximately 5.97 acres. The mitigation for this group will consist of preservation of both wetlands and uplands within the Tomoka River RHPZ area. Mitigation for this project will only offset the RHPZ functional loss of those permits. USACE wetland impacts will not be offset in this mitigation group because there are no federal RHPZ requirements.

SJ70 Tomoka RHPZ: The SR 600 (U.S. 92) state permit IND-127-22979-4 has been issued with 0.74 acres of RHPZ wetlands and 0.15 acres of upland RHPZ impacts. The SR 40 Breakaway Trail project and the I-95 at LPGA Boulevard have not been permitted yet. Two mitigation parcels have been acquired totaling 23.93 acres to offset RHPZ impacts within this group.

The first parcel is the W. Richard Every Parcel (5.34 acres), which was approved for purchase of a conservation easement at the February 2022 District Governing Board meeting. The second parcel, Penland and Pomerence, LLC (18.59 acres), was approved for acquisition of a conservation easement at the October 2022 District Governing Board meeting. These parcels include the preservation of both wetlands and uplands within the Tomoka RHPZ. These parcels consist of a conservation easement consistent with 704.06, *Florida Statutes*, to preclude future timbering, building and encroachment into the RHPZ area and protect these areas in perpetuity. Future acquisitions may be required, after permitting, to make sure all RHPZ impacts by all aforementioned permits are offset.

Regulatory Mitigation Basin 17 has four mitigation banks, Port Orange, Lake Swamp, Tiger Bay, and Farmton North. All these banks have mitigation credits; however, no Tomoka River-RHPZ credits are available. The mitigation banks in Basin 17 cannot satisfy the state RHPZ mitigation requirements.

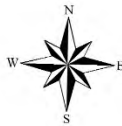




SJ70 FDOT Mitigation Plan



0.3 0.15 0 0.3 Miles



RHPZ Mitigation Plan

The St. Johns River Water Management District prepares and uses this Information for its own purposes and this information may not be suitable for other purposes. This information is provided as is. Further documentation of this data can be obtained by contacting: St. Johns River Water Management District, Geographic Information Systems, Program Management, P.O. Box 1429, 4049 Reid Street Palatka, Florida 32178-1429 Tel: (386) 329-4500.

Regulatory Mitigation Basin 21: Project Group SJ72

Project group SJ72 includes the following road project (see SJ72 Figure):

Space Coast Trail from Max Brewer Causeway to Atlantic Ocean/Space Coast Trail Phase 2 FM# 437093-1 and 437093-2

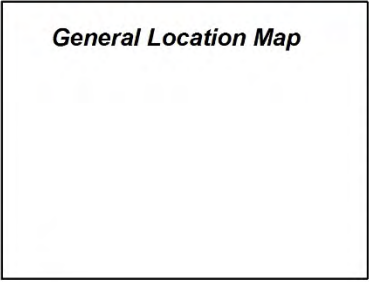
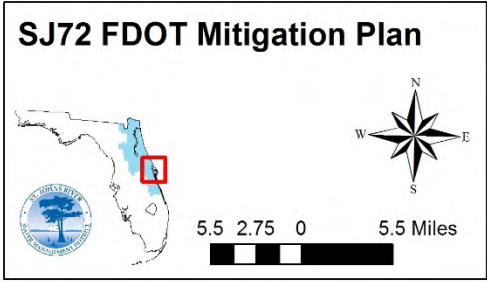
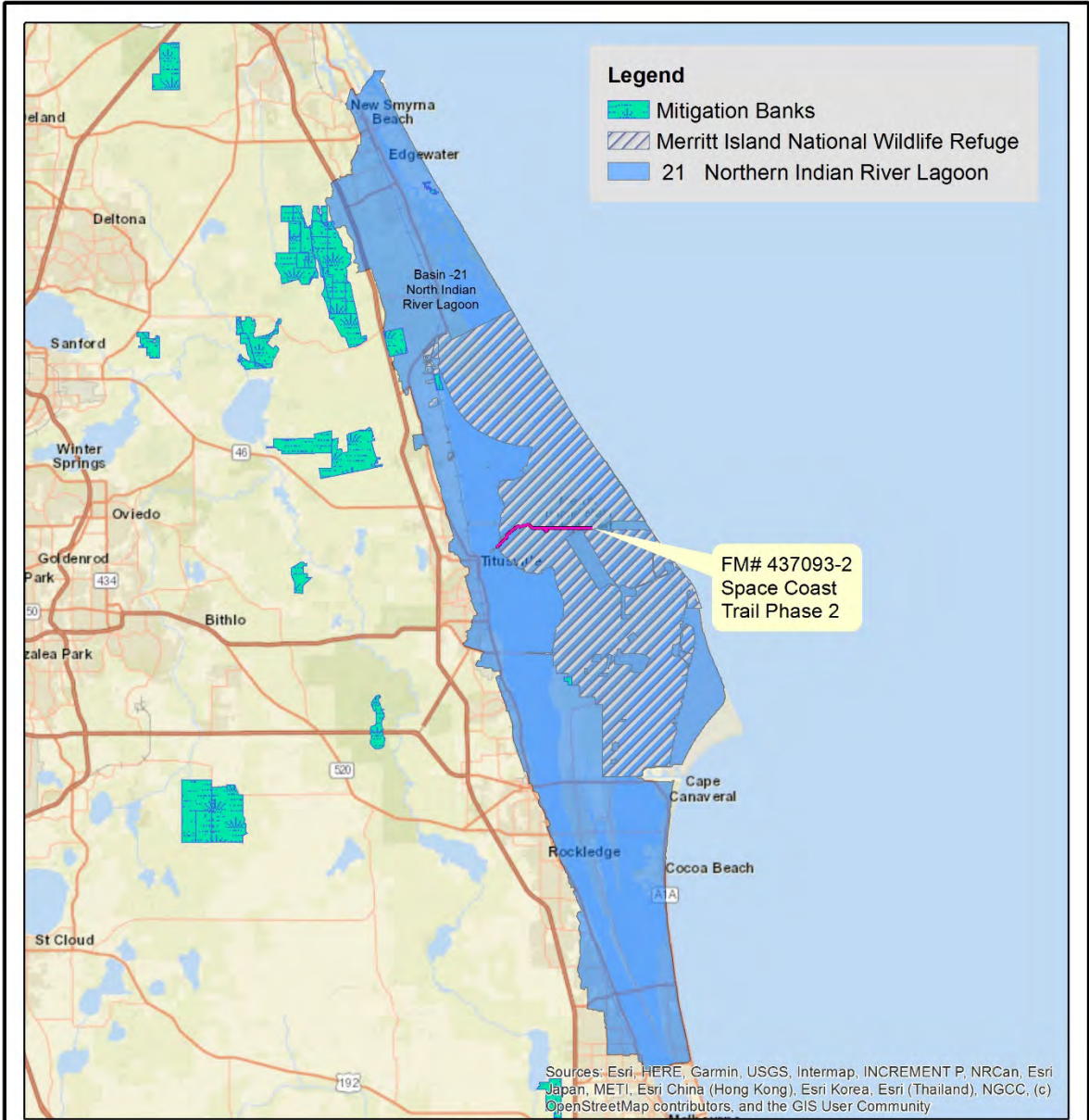
This project was previously on the 2017 and 2021 Plans. It was moved in 2023 Plan from SJ67 Group to SJ72.

Space Coast Phase 2

FM# 437093-2

SJ72: The wetland and surface water impacts for the state and federal permits for the above road project is estimated to have 11.67 acres of wetland direct and secondary impacts. These impacts are located within Merritt Island National Wildlife Refuge (MINWR). NASA and the National Park Service have mandated mitigation efforts need to stay within the boundaries of the MINWR refuge. The permittee responsible for mitigation will offset the total functional loss, based on the Unified Mitigation Assessment Methodology. A twelve-step plan has been submitted with the FDOT permit to the USACE and is currently under review. Mitigation includes drag line ditch restoration within the park boundary. The long-term manager will be the MINWR staff.

Regulatory Mitigation Basin 21 has four mitigation banks: Green Wing, NeoVerde, Webster Creek, and Pine Island. None of the Basin 21 banks are located within the MINWR boundary, therefore permittee responsible mitigation located in the MINWR will be completed to offset the functional loss associated with this project.



The St. Johns River Water Management District prepares and uses this information for its own purposes and this information may not be suitable for other purposes. This information is provided as is. Further documentation of this data can be obtained by contacting: St. Johns River Water Management District, Geographic Information Systems, Program Management, P.O. Box 1429, 4049 Reid Street Palatka, Florida 32178-1429 Tel: (386) 329-4500.

Regulatory Mitigation Basin 9: Project Group SJ73

Project group SJ73 includes the following road project (see SJ73 Figure):

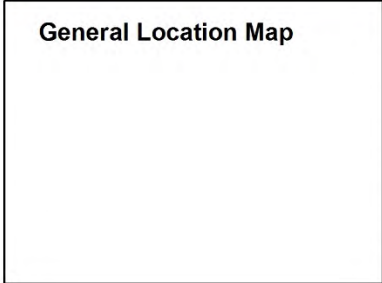
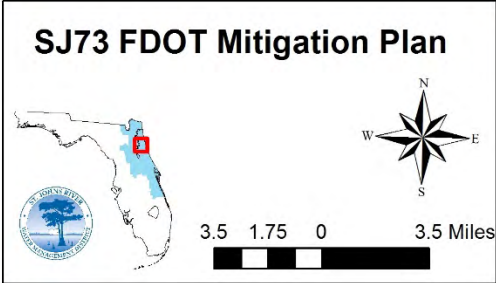
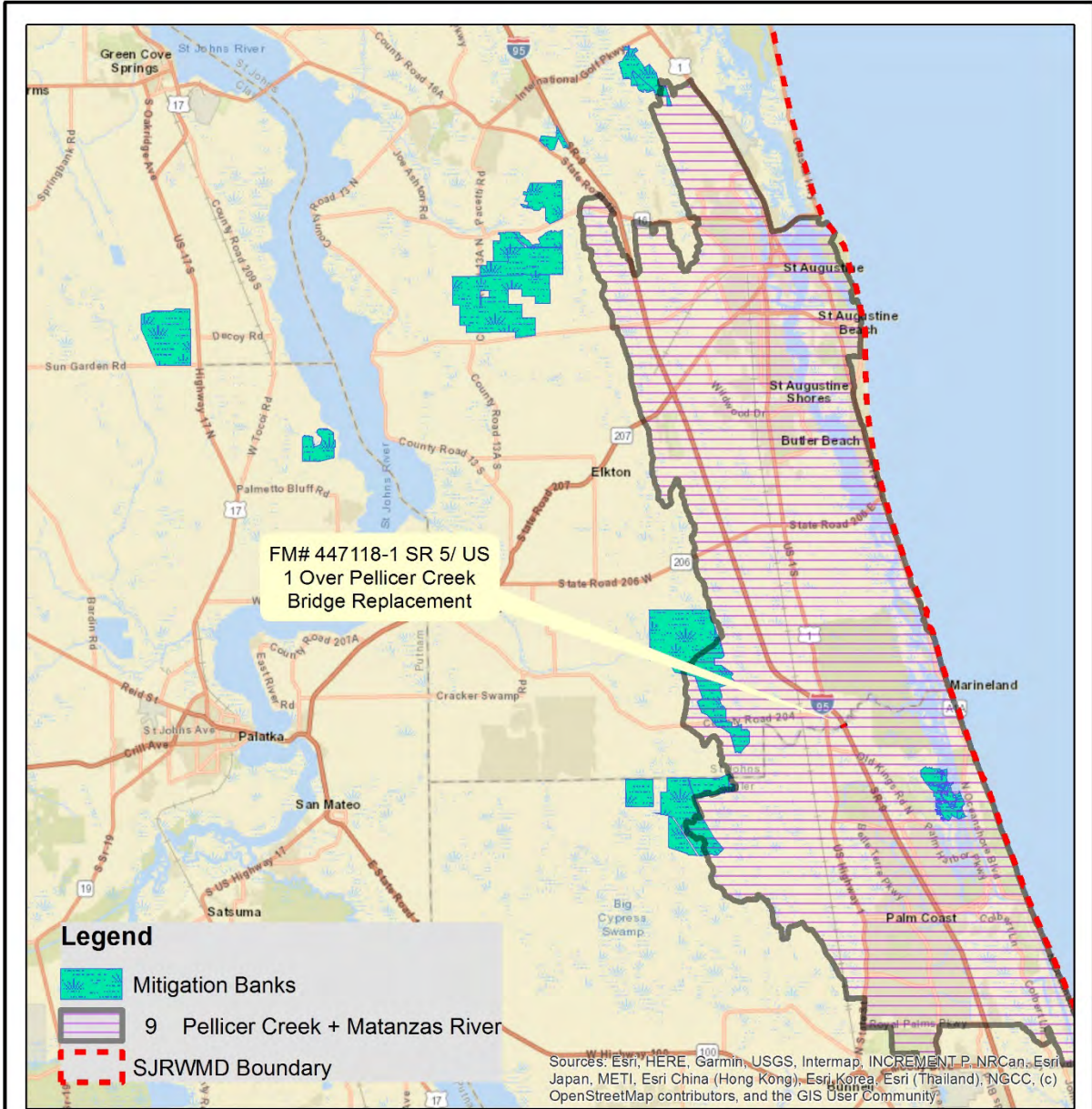
SR 5 Bridge Replacement at Pellicer Creek

FM#447118-1

SJ73: The wetland and surface water impacts for the state and federal permits for the above road projects are estimated to have 1.00 acre of estuarine wetland impacts. The SJ73 mitigation plan will offset the wetland impacts within Basins 9 that are not offset by mitigation bank credits in the respective basin.

The mitigation plan for this SJ group is still in the planning phase. Impacts will be offset by the preservation, restoration, and enhancement of additional conservation lands in Regulatory Mitigation Basin 9 - Pellicer Creek and Matanzas River within USACE HUC 03080201-Daytona-St. Augustine. Detailed mitigation plan(s) demonstrating how the impacts will be offset will be completed concurrently with the FDOT permit application(s) as needed to address all proposed impacts.

Regulatory Mitigation Basin 9 has three mitigation banks: Brick Road, Fish Tail Swamp and St. Marks mitigation banks all have received both state and federal approval, however none of the banks has estuarine credits available.



The St. Johns River Water Management District prepares and uses this information for its own purposes and this information may not be suitable for other purposes. This information is provided as is. Further documentation of this data can be obtained by contacting: St. Johns River Water Management District, Geographic Information Systems, Program Management, P.O. Box 1429, 4049 Reid Street Palatka, Florida 32178-1429 Tel: (386) 329-4500.

Appendix 2: Section 373.4137, F.S.



373.4137, F.S. Mitigation requirements for specified transportation projects.

(1) The Legislature finds that environmental mitigation for the impact of transportation projects proposed by the Department of Transportation or a transportation authority established pursuant to Chapter 348 or Chapter 349 can be more effectively achieved by regional, long-range mitigation planning rather than on a project-by-project basis. It is the intent of the Legislature that mitigation to offset the adverse effects of these transportation projects be funded by the Department of Transportation and be carried out by the use of mitigation banks and any other mitigation options that satisfy state and federal requirements in a manner that promotes efficiency, timeliness in project delivery, and cost-effectiveness.

(2) Environmental impact inventories for transportation projects proposed by the Department of Transportation or a transportation authority established pursuant to Chapter 348 or Chapter 349 shall be developed as follows:

(a) By July 1 of each year, the Department of Transportation, or a transportation authority established pursuant to Chapter 348 or Chapter 349 which chooses to participate in the program, shall submit to the water management districts a list of its projects in the adopted work program and an environmental impact inventory of habitat impacts and the anticipated mitigation needed to offset impacts as described in paragraph (b). The environmental impact inventory must be based on the rules adopted pursuant to this part, s. 404 of the Clean Water Act, 33 U.S.C. s. 1344, and the Department of Transportation's plan of construction for transportation projects in the next three years of the tentative work program. The Department of Transportation or a transportation authority established pursuant to Chapter 348 or Chapter 349 may also include in its environmental impact inventory the habitat impacts and the anticipated amount of mitigation needed for any future transportation project. The Department of Transportation and each transportation authority established pursuant to Chapter 348 or Chapter 349 may fund any mitigation activities for future projects using current year funds.

(b) The environmental impact inventory must include a description of habitat impacts, including location, acreage, and type; the anticipated mitigation needed based on the functional loss as determined through the uniform mitigation assessment method adopted by the Department of Environmental Protection by rule pursuant to s. 373.414(18); identification of the proposed mitigation option; state water quality classification of impacted wetlands and other surface waters; any other state or regional designations for these habitats; and a list of threatened species, endangered species, and species of special concern affected by the proposed project.

(c) Before projects are identified for inclusion in a water management district mitigation plan as described in subsection (4), the Department of Transportation must consider using credits from a permitted mitigation bank. The Department of Transportation must consider the availability of suitable and sufficient mitigation bank credits within the transportation project's area, the ability to satisfy commitments to regulatory and resource agencies, the availability of

suitable and sufficient mitigation purchased or developed under this section, the ability to complete suitable existing water management district or Department of Environmental Protection mitigation sites initiated with Department of Transportation mitigation funds, and the ability to satisfy state and federal requirements, including long-term maintenance and liability.

(3)(a) To implement the mitigation option identified in the environmental impact inventory described in subsection (2), the Department of Transportation may purchase credits for current and future use directly from a mitigation bank, purchase mitigation services through the water management districts or the Department of Environmental Protection, conduct its own mitigation, or use other mitigation options that meet state and federal requirements. Funding for the identified mitigation option as described in the environmental impact inventory must be included in the Department of Transportation's work program developed pursuant to s. 339.135. The amount programmed each year by the Department of Transportation and participating transportation authorities established pursuant to Chapter 348 or Chapter 349 must correspond to an estimated cost to mitigate for the functional loss identified in the environmental impact inventory described in subsection (2).

(b) Each transportation authority established pursuant to Chapter 348 or Chapter 349 which chooses to participate in this program shall create an escrow account within its financial structure and deposit funds in the account to pay for the environmental mitigation phase of projects budgeted for the current fiscal year. The escrow account shall be maintained by the authority for the benefit of the water management districts. Any interest earnings from the escrow account must remain with the authority.

(c) For mitigation implemented by the water management district or the Department of Environmental Protection, as appropriate, the amount paid each year must be based on mitigation services provided by the water management districts or the Department of Environmental Protection pursuant to an approved water management district mitigation plan, as described in subsection (4). The water management districts or the Department of Environmental Protection, as appropriate, may request payment no sooner than 30 days before the date the funds are needed to pay for activities associated with development or implementation of permitted mitigation that meets the requirements of this part, 33 U.S.C. s. 1344, and 33 C.F.R. part 332, in the approved water management district mitigation plan described in subsection (4) for the current fiscal year. The projected amount of mitigation shall be reconciled each quarter with the actual amount of mitigation needed for projects as permitted, including permit modifications, pursuant to this part and s. 404 of the Clean Water Act, 33 U.S.C. s. 1344. The subject year's programming of funds shall be adjusted to reflect the mitigation as permitted. If the water management district excludes a project from an approved water management district mitigation plan, if the water management district cannot timely permit a mitigation site to offset the impacts of a Department of Transportation project identified in the environmental impact inventory, or if the proposed mitigation does not meet state and federal requirements, the Department of Transportation may use the associated funds for the purchase of mitigation bank credits or any other mitigation

option that satisfies state and federal requirements. Upon final payment for mitigation of a transportation project as permitted, the obligation of the Department of Transportation or the participating transportation authority is satisfied, and the water management district or the Department of Environmental Protection, as appropriate, has continuing responsibility for the mitigation project.

(d) Beginning with the March 2015 water management district mitigation plans, each water management district or the Department of Environmental Protection, as appropriate, shall invoice the Department of Transportation for mitigation services to offset only the impacts of a Department of Transportation project identified in the environmental impact inventory, including planning, design, construction, maintenance and monitoring, and other costs necessary to meet the requirements of this section, 33 U.S.C. s. 1344, and 33 C.F.R. part 332. If the water management district identifies the use of mitigation bank credits to offset a Department of Transportation impact, the water management district shall exclude that purchase from the mitigation plan, and the Department of Transportation shall purchase the bank credits.

(e) For mitigation activities occurring on existing water management district or Department of Environmental Protection mitigation sites initiated with Department of Transportation mitigation funds before July 1, 2013, the water management district or the Department of Environmental Protection, as appropriate, shall invoice the Department of Transportation or a participating transportation authority at a cost per acre of \$75,000 multiplied by the projected acres of impact as identified in the environmental impact inventory. The cost per acre must be adjusted by the percentage change in the average of the Consumer Price Index issued by the United States Department of Labor for the most recent 12-month period ending September 30, compared to the base year average, which is the average for the 12-month period ending September 30, 1996. When implementing the mitigation activities necessary to offset the permitted impacts as provided in the approved mitigation plan, the water management district shall maintain records of the costs incurred in implementing the mitigation. The records must include, but are not limited to, costs for planning, land acquisition, design, construction, staff support, long-term maintenance and monitoring of the mitigation site, and other costs necessary to meet the requirements of 33 U.S.C. s. 1344 and 33 C.F.R. part 332.

(f) For purposes of preparing and implementing the mitigation plans to be adopted by the water management districts on or before March 1, 2014, for impacts based on the July 1, 2013, environmental impact inventory, the funds identified in the Department of Transportation's work program or participating transportation authorities' escrow accounts must correspond to a cost per acre of \$75,000 multiplied by the projected acres of impact as identified in the environmental impact inventory. The cost per acre must be adjusted by the percentage change in the average of the Consumer Price Index issued by the United States Department of Labor for the most recent 12-month period ending September 30, compared to the base year average, which is the average for the 12-month period ending September 30, 1996. Payment under this paragraph is limited to mitigation activities that are identified in the first year of the 2013 mitigation plan and for which

the transportation project is permitted and are in the Department of Transportation's adopted work program, or equivalent for a transportation authority. When implementing the mitigation activities necessary to offset the permitted impacts as provided in the approved mitigation plan, the water management district shall maintain records of the costs incurred in implementing the mitigation. The records must include, but are not limited to, costs for planning, land acquisition, design, construction, staff support, long-term maintenance and monitoring of the mitigation site, and other costs necessary to meet the requirements of 33 U.S.C. s. 1344 and 33 C.F.R. part 332. To the extent moneys paid to a water management district by the Department of Transportation or a participating transportation authority are greater than the amount spent by the water management districts in implementing the mitigation to offset the permitted impacts, these funds must be refunded to the Department of Transportation or participating transportation authority. This paragraph expires June 30, 2015.

(4) Before March 1 of each year, each water management district shall develop a mitigation plan to offset only the impacts of transportation projects in the environmental impact inventory for which a water management district is implementing mitigation that meets the requirements of this section, 33 U.S.C. s. 1344, and 33 C.F.R. part 332. The water management district mitigation plan must be developed in consultation with the Department of Environmental Protection, the United States Army Corps of Engineers, the Department of Transportation, participating transportation authorities established pursuant to Chapter 348 or Chapter 349, other appropriate federal, state, and local governments, and other interested parties, including entities operating mitigation banks. In developing such plans, the water management districts shall use sound ecosystem management practices to address significant water resource needs and consider activities of the Department of Environmental Protection and the water management districts, such as surface water improvement and management (SWIM) projects and lands identified for potential acquisition for preservation, restoration, or enhancement, and the control of invasive and exotic plants in wetlands and other surface waters, to the extent that the activities comply with the mitigation requirements adopted under this part, 33 U.S.C. s. 1344, and 33 C.F.R. part 332. The water management district mitigation plan must identify each site where the water management district will mitigate for a transportation project. For each mitigation site, the water management district shall provide the scope of the mitigation services; provide the functional gain as determined through the uniform mitigation assessment method adopted by the Department of Environmental Protection by rule pursuant to s. 373.414(18); describe how the mitigation offsets the impacts of each transportation project as permitted; and provide a schedule for the mitigation services. The water management districts shall maintain records of costs incurred and payments received for providing these services. Records must include, but are not limited to, planning, land acquisition, design, construction, staff support, long-term maintenance and monitoring of the mitigation site, and other costs necessary to meet the requirements of 33 U.S.C. s. 1344 and 33 C.F.R. part 332. To the extent moneys paid to a water management district by the Department of Transportation or a participating transportation authority are greater than the amount spent by the water management districts in providing the mitigation services to offset

the permitted transportation project impacts, these moneys must be refunded to the Department of Transportation or participating transportation authority. The mitigation plan shall be submitted to the water management district governing board or its designee for review and approval. At least 14 days before approval by the governing board, the water management district shall provide a copy of the draft mitigation plan to the Department of Environmental Protection and any person who has requested a copy. Subsequent to the governing board approval, the mitigation plan shall be submitted to the Department of Environmental Protection for approval. The plan may not be implemented until it is submitted to, and approved in part or in its entirety by, the Department of Environmental Protection.

(a) Specific projects may be excluded from the mitigation plan, in whole or in part, and are not subject to this section upon the election of the Department of Transportation, a transportation authority if applicable, or the appropriate water management district. The Department of Transportation or a participating transportation authority may not exclude a transportation project from the mitigation plan if mitigation is scheduled for implementation by the water management district in the current fiscal year unless the transportation project is removed from the Department of Transportation's work program or transportation authority funding plan, the mitigation cannot be timely permitted to offset the impacts of a Department of Transportation project identified in the environmental impact inventory, or the proposed mitigation does not meet state and federal requirements. If a project is removed from the work program or the mitigation plan, costs spent by the water management district before removal are eligible for reimbursement by the Department of Transportation or participating transportation authority.

(b) When determining which projects to include in or exclude from the mitigation plan, the Department of Transportation shall investigate using credits from a permitted mitigation bank before those projects are submitted for inclusion in a water management district mitigation plan. The Department of Transportation shall exclude a project from the mitigation plan if the investigation undertaken pursuant to this paragraph results in the conclusion that the use of credits from a permitted mitigation bank promotes efficiency, timeliness in project delivery, cost-effectiveness, and transfer of liability for success and long-term maintenance.

(5) The water management district shall ensure that mitigation requirements pursuant to 33 U.S.C. s. 1344 and 33 C.F.R. part 332 are met for the impacts identified in the environmental impact inventory for which the water management district will implement mitigation described in subsection (2), by implementation of the approved mitigation plan described in subsection (4) to the extent funding is provided by the Department of Transportation, or a transportation authority established pursuant to Chapter 348 or Chapter 349, if applicable. In developing and implementing the mitigation plan, the water management district shall comply with federal permitting requirements pursuant to 33 U.S.C. s. 1344 and 33 C.F.R. part 332. During the federal permitting process, the water management district may deviate from the approved mitigation plan in order to comply with federal permitting requirements upon notice and coordination with the Department of Transportation or participating transportation authority.

(6) The water management district mitigation plans shall be updated annually to reflect the most current Department of Transportation work program and project list of a transportation authority established pursuant to Chapter 348 or Chapter 349, if applicable, and may be amended throughout the year to anticipate schedule changes or additional projects that may arise. Before amending the mitigation plan to include new projects, the Department of Transportation must consider mitigation banks and other available mitigation options that meet state and federal requirements. Each update and amendment of the mitigation plan shall be submitted to the governing board of the water management district or its designee for approval. However, such approval shall not apply to a deviation as described in subsection (5).

(7) Upon approval by the governing board of the water management district and the Department of Environmental Protection, the mitigation plan shall satisfy the mitigation requirements under this part for impacts specifically identified in the environmental impact inventory described in subsection (2) and any other mitigation requirements imposed by local, regional, and state agencies for these same impacts. The approval of the governing board of the water management district and the Department of Environmental Protection authorizes the activities proposed in the mitigation plan, and no other state, regional, or local permit or approval is necessary.

(8) This section does not eliminate the need for the Department of Transportation or a transportation authority established pursuant to Chapter 348 or Chapter 349 to comply with the requirement to implement practicable design modifications, including realignment of transportation projects, to reduce or eliminate the impacts of its transportation projects on wetlands and other surface waters as required by rules adopted pursuant to this part, or to diminish the authority under this part to regulate other impacts, including water quantity or water quality impacts, or impacts regulated under this part which are not identified in the environmental impact inventory described in subsection (2).

History.—s. 1, ch. 96-238; s. 36, ch. 99-385; s. 1, ch. 2000-261; s. 93, ch. 2002-20; s. 39, ch. 2004-269; s. 30, ch. 2005-71; s. 12, ch. 2005-281; s. 1, ch. 2009-11; s. 3, ch. 2012-174; s. 22, ch. 2014-223.

Appendix 3: Projects Removed (Excluded) from the FDOT Mitigation Program



This is the list of projects removed (excluded) from the master list of FDOT roadway projects (red highlight removed 2025)

Mitigation Group	Regulatory Mitigation Basin	FDOT Project Name	FM#	Plan Year Excluded	County	Why Excluded
SJ10	4 and 5	SR 13 Clair Lane to Sunbeam	211478-4	2009	Duval	Closed by FDOT, not constructed
SJ10	4 and 5	Southside Boulevard I-95 to JTB	211510-7	2009	Duval	Closed by FDOT, not constructed
SJ23	4	SR 21, from SR 23 to Old Jennings Road	208211-7	2008	Clay	FDOT purchased bank credits
SJ23	4	I-295 Auxiliary Lanes	213345-7	2014	Duval	FDOT purchased bank credits
SJ23	4	SR 23/BFC Overpass, Plantation Oaks Blvd.	208166-2	2008	Clay	No mitigation required
SJ23	4	SR 21 from CR 218 to CR 220B	208211-1	2008	Clay	No mitigation required
SJ23	4	SR 23/BFC (Clay CL to Argyle Forest Blvd.)	209250-3	2008	Duval	No mitigation required
SJ23	4	Highway Ave./Cedar Creek bridge replacement	SJ10	2016	Duval	No mitigation required
SJ23	4	I-95 Overland Bridge	213304-3	2016	Duval	No mitigation required
SJ29	11	S.W. 20th Ave. (75th St. to S.W. 34th St.)	211335-1	2008	Alachua	Closed by FDOT, not constructed
SJ38	12	U.S. 441 Griffin to MLK	238394-4	2016	Lake	Closed by FDOT, not constructed
SJ40	13	SR 25 (SR 530 to Boggy Marsh)	238421-1	2012	Lake	Minimal impact, project returned to FDOT
SJ40	13	SR 27 Boggy Marsh to Lake Louisa	238422-1	2012	Lake	Minimal impact
SJ40	13	SR 25 (Lake Louisa to SR 50)	238423-1	2012	Lake	Minimal impact
SJ40	13	SR 25 (Highland Ave. to Pearl St.)	238424-1	2012	Lake	Minimal impact
SJ40	13	U.S. 27 (SB Palatka River Bridge)	408638-1	2012	Lake	Minimal impact
SJ47	23	(I-4 (SR 400) from 1-mile East of SR 434 to east of SR 15/609	242592-4	2020	Seminole	No mitigation required
SJ47	23	SR 419/SR 434 from west of Jetta Point to SR 426	422015-1	2016	Seminole	No mitigation required

Mitigation Group	Regulatory Mitigation Basin	FDOT Project Name	FM#	Plan Year Excluded	County	Why Excluded
SJ56	14	Sunrail Commute Rail Debarry-DeLand	423446-9	2014	Volusia	FDOT purchased bank credits
SJ56	16	US 1 at Black Branch Bridge	411092-1	2016	Flagler	No mitigation required
SJ57	22	SR 514 From Weber Road to Corey Road	413761-1	2017	Brevard	No mitigation required
SJ57	22	SR 514 Malabar Road from Babcock to U.S. 1	430136-1	2021	Brevard	FDOT purchased bank credits
SJ61	3	SR 200, Still Quarters to West of Rubin	210712-3	2014	Nassau	FDOT purchased bank credits
SJ62	5	U.S. 1 at CR 210	210420-7	2014	St. Johns	FDOT purchased bank credits
SJ62	5	I-295 Auxiliary Lanes	213345-7	2014	Duval	FDOT purchased bank credits
SJ62	5	SR 13 at SR 16	424454-1	2014	St. Johns	FDOT purchased bank credits
SJ63	9	SR 16, From Green Acres Road to SR 5A	424481-1	2014	St. Johns	No mitigation required
SJ63	9	U.S. 1 Bunnell Weigh Station	425529-1	2016	Flagler	No mitigation required
SJ66	22	Palm Bay Parkway Interchange at I-95	426904-3	2016	Brevard	FDOT purchased bank credits
SJ67	20	SR 501 from Michigan Avenue to Industry Road	433605-1	2018	Brevard	FDOT purchased bank credits
SJ67	21	SR 520 Causeway Maintenance	429276-1	2017	Brevard	No mitigation required
SJ67	21	CR 405 NASA Causeway Bridge Replacement	440424-1	2022	Brevard	FDOT purchased bank credits
SJ67	21	SR 5/U.S. 1 Drainage Outfall	437116-1	2022	Brevard	No mitigation Required
SJ67	21	SR 5/ US1 from Miller Cove Road to Pineda Causeway	444992-1	2023	Brevard	No mitigation required
SJ67	21	St. Johns River-to-Sea Loop Myrtle Ave. from 10th St. to SR 44	439864-1	2024	Volusia	FDOT purchased bank credits
SJ67	21	SR 5 /U. S. 1 Bridge over Turnbull Creek Bridge Replacement	447117-1	2025	Volusia	No Mitigation required
SJ69	22	82nd Ave. from 26th to 69th	230879-3	2020	Indian River	No mitigation required
SJ71	12	Silver Springs Pedestrian Bridges	426179-1	2023	Marion	No mitigation required
SJ71	12	SR 35 Resurfacing CR 42 to SE 144 Place Road	445302-1	2023	Lake	No mitigation required

Appendix 4: Master Project List Report (FDOT Mitigation Program)



*Note – Light blue shading indicates SJ groups with open FM numbers; light green shading indicates closed FM numbers, yellow highlight is new projects added and red highlighted projects are projects removed in the 2025 plan.

Mit. ID	FDOT Project Name	FM Number	County	Basin	Impact Acres	Plan Index
SJ47	Basin 23. Preservation, habitat enhancement and stormwater retrofit in Lake Jesup Basin					
	I-4 south of Ivanhoe to north of Kennedy Blvd.	242484-5	Seminole	23	5.14	2006:p20
	SR 426 (Mitchell Hammock to Winter Springs)	404525-1	Seminole	23	1.10	2002:p52
	Widen Seminole Xway from Aloma Ave. to SR 434 (MP 38–44)	417545-1	Seminole	23	1.92	2016:p8
	SR 414 Maitland Boulevard	424217-1	Seminole	23	3.30	2016:p8
SJ56	Basins 14, 16. Preservation Sunland Citrus (Strawn and Heart Island used by previous projects)					
	SR 40 from SR 15 (U.S. 17) to SR 11	240836-1	Volusia	14	41.70	2016:p13
	SR 44 Over St. Johns River bridge #11063	429556-1	Lake	14	8.10	2016:p13
SJ64	Basin 11, 12. Preservation/enhancement within Halfmile Creek					
	SR 40 from CR 314 to CR 314A	410674-3	Marion	11	14.55	2012:p24
	SR 40 from end of four lane to CR 314	410674-2	Marion	11	4.84	2012:p24
	SR 40 from 314 To Levy Hammock Road	410674-4	Marion	11	1.48	2024:p10
	SR 50 Sumter/Lake County Line to CR 33 (moved SJ58/SJ71)	435859-5	Lake	12	7.90	2018:p18
	Turnpike (TPK) Mainline Widening MP 273-279 (moved SJ58/SJ71)	435784-1 435785-1	Orange/ Lake	12/13	6.30	2018:p18
	SR 19 from CR 48 to CR 581 (moved SJ58/SJ71)	238319-1	Lake	12	10.06	2018:p18
	Florida Turnpike Mainline Widening SR 91-Clermont SR 50 (moved SJ58/SJ71)	435786-1 435786-2 435787-1	Lake/ Orange	12	0.33	2020:p9
SJ66	Basin 22. Preservation or enhancement in basin Coastal Oaks Mitigation Area					
	I-95 Interchange at Ellis Road/St. John Heritage Parkway	426905-3	Brevard	22	14.32	2015:p14
SJ67	Basin 20 and 21. Long Point Park/Cape Canaveral Participation Agreement, preservation, enhancement, or restoration in basin					
	SR 528 from SR 524 to east of SR 3	407402-3	Brevard	20, 21	2.24	2016:p20
	SR 528 from east of SR 3 to Port Canaveral Interchange	407402-4	Brevard	21	2.79	2016:p20
	I-95 Interchange at Viera Blvd.	428238-1	Brevard	20	1.30	2016:p20
	SR 5 /US 1 Bridge over Turnbull Creek Bridge Replacement	447117-1	Volusia	21	1.00	2022:p8
	SR 401 Bridge Replacement	444787-1	Brevard	21	0.62	2024:p13
SJ68	Basins 4, 5, and 8. Preservation, enhancement, or restoration in basin (Styduhar, Masters, Freeman, SR 16 causeway restoration)					
	First Coast Expressway (TFF)	422938-2	St. Johns/ Clay	4, 5, 8	35.73	2016:p24
	First Coast Expressway (SAV)	422938-3	St. Johns/ Clay	4, 5, 8	12.02	2016:p24
SJ70	Basin 17. Tomoka RHPZ mitigation for upland and wetland RHPZ impacts					
	SR 600 (U.S. 92) Form I-4 EB Ramp to Tomoka Farms Road	422627-1	Volusia	17	0.89	2019:p10
	SR 40 Breakaway Trail to Williamson Boulevard -RHPZ only	428947-1	Volusia	17	1.18	2022:p9
	I-95 at LPGA Boulevard from US 92 to Williamson Boulevard - RHPZ only	448456-1	Volusia	17	3.90	2024:p19
SJ71	Basin 12. Preservation and enhancement in the basin (All projects moved to SJ64)					
SJ72	Basin 21. Preservation and enhancement in the Merritt Island National Wildlife Refuge					

Mit. ID	FDOT Project Name	FM Number	County	Basin	Impact Acres	Plan Index
	Space Coast Trail Phase 2	437093-2	Brevard	21	11.67	2017:p15 2021:p9
SJ73	Basin 9. Preservation and enhancement in the Pellicer Creek and Matanzas' basin					
	SR 5 Bridge Replacement at Pellicer Creek	447118-1	Flagler	9	1.00	2022:p11
SJ74	Basin 23. Preservation and enhancement in the Lake Jesup					
	Widen SR417 from SR434 to CR427	437592-1	Seminole	23	3.00	2025:p5
SJ01	Basins 1,2. Preservation and enhancement in the greater St. Marys River Basin (Baker State Forest)					
	CR 121 Brandy Branch bridge	212595-1	Nassau	2	3.10	1997:p5, 2001:p5
	CR 121 Mill Creek bridge	212606-1	Nassau	2	4.60	1997:p5, 2001:p5
	I-10 Rest areas	213317-1	Duval	1	0.00	2002:p5
	SR 200 Thomas Creek to Callahan	210683-3	Nassau	1	22.06	2001:p5
	U.S. 17 bridge over St. Marys River	210676-1	Nassau	2	0.00	1997:p5, 2001:p5
	U.S. 90 SCLRR Deep Creek bridge	210693-1	Nassau	1	0.71	1997:p5, 1999:p12, 2001:p5
	SR 200 from U.S. 90 to Nassau County line	209537-3	Duval	1	23.86	2001:p5
SJ06	Basins 3,4. Purchase of purchase of credits at Northeast Florida Wetland Mitigation Bank					
	I-95 from I-295 to Nassau County	213271-1	Duval	3,4	12.35	1997:p11, 2000:p11
	I-95 Nassau County	213469-1	Nassau	3	14.10	1997:p11, 1999:p11, 2000:p11
SJ10	Basins 4,5. Preservation in 12-mile Swamp (Cummer Trust parcel)					
	I-95 (International Golf Parkway to Duval County)	213516-2	St. Johns	5	1.79	2001:p13
	I-95 (SR 16 to International Golf Parkway)	213515-2	St. Johns	5	8.24	2001:p13
	I-95 from I-295 south to St. Johns County	213274-1	Duval	5	3.71	2000:p12
	I-95 Rest area in St. Johns County	213506-1	St. Johns	5	0.54	2000:p12
	Racetrack Road/Durbin Creek bridge	212367-1	St. Johns	5	3.80	1997:p14, 2000:p12
	SR 13 Cunningham Creek bridge	210213-1	St. Johns	4	2.67	1997:p14, 2000:p12
	SR 13 Robert Road to Davis Pond	210223-1	St. Johns	4	0.00	1997:p14, 2000:p12
	U.S. 1 (St. Johns County to Judith Avenue)	209641-1	Duval	5	1.73	2000:p12
	U.S. 1 Durbin Creek bridge	210281-1	St. Johns	5	0.67	1998:p7, 2000:p12
SJ12	Basins 8,9. Pres and enhancement of uplands and wetlands in the Deep Creek basin (TCAA and Yarborough)					
	CR 13 at Sixteen Mile Creek bridge	212382-1A	St. Johns	8	1.61	2007:p10
	CR 13 at Sixteen Mile Creek bridge (mod1)	212382-1B	St. Johns	8	0.07	(blank)
	Deep Creek mitigation	211699-8	(blank)	(blank)	(blank)	(blank)
	SR 207 (CR 206 to CR 305)	210409-1	St. Johns	8	5.97	2001:p17

Mit. ID	FDOT Project Name	FM Number	County	Basin	Impact Acres	Plan Index
	SR 207 (CR 305 to I-95)	210253-1A	St. Johns	8,9	26.64	2001:p17
	SR 207 (CR 305 to I-95) (mod1)	210253-1B	St. Johns	8,9	6.39	2001:p17
	SR 207 (CR 305 to I-95) (mod2)	210253-1C	St. Johns	8,9	2.12	2001:p17
	SR 207 at Cracker Branch bridge	210283-1	St. Johns	8	0.83	1997:p20, 2001:p17
	SR 207 from CR 207 to St. Johns County	210016-1	Putnam	8	1.92	1997:p20, 2001:p17
	SR 207 from SR 100 to CR 207	209965-1	Putnam	8	3.04	1997:p20, 2001:p17
	SR 207 Putnam County to SR 206	210410-1	St. Johns	8	9.68	1997:p20, 2001:p17
SJ16	Basin 16. Crescent Lake Basin preservation and long-term management (Plum Creek/Volusia/Rayonier, WT Ranch)					
	CR 305 bridges	407463-1	Flagler	16	0.00	(blank)
	SR 100 (U.S. 1 to Belle Terre Parkway)	237965-1	Flagler	16	6.54	2002:p27
	SR 100 Bridges (Putnam County to US 1)	237921-1	Flagler	16	2.96	2000:p20, 2002:p27
	SR 11 (Little Haw Creek bridge)	408639-1	Flagler	16	0.44	2005:p25
	SR 11 Bridge replacement (1)	237915-1	Flagler	16	0.00	(blank)
	SR 11 Bridge replacement (2)	237916-1	Flagler	16	0.00	(blank)
	SR 11 Bridge replacement (3)	237917-1	Flagler	16	0.00	(blank)
SJ18	Basins 18, 23. Gemini Springs additions (Empire Cattle Company)					
	SR 417 I-4 interchange	242593-1	Seminole	18	8.05	1998:p7, 1999:p13
	SR 417 Old Lake Mary to Rinehart	240259-1	Seminole	23	1.41	1998:p7, 1999:p13
	SR 417 U.S. 17/92 to Old Lake Mary	240258-1	Seminole	23	1.74	1998:p7, 1999:p13
SJ19	Basins 10,12. Funds advanced for restoration of freshwater wetlands through the Lake Apopka SWIM program at the North Shore Area or Clay Island					
	CR 325 A bridge (near CR 448)	407165-1	Lake	12	0.00	(blank)
	SR 500 CR 464 to CR 225A	238679-1	Marion	10	1.09	1999:p18
	SR 500 Lake Eustis to CR 44B	238314-1	Lake	12	0.18	1999:p14
	SR 500 Lake Shore to Lake Eustis	238358-1	Lake	12	0.57	1999:p14
	SR 500/SR 44 to College Road	238315-1	Lake	12	2.30	1999:p14
	SR 500 College Road to Lake Shore	238412-1	Lake	12	2.16	1999:p14
SJ22	Basin 6. South Shore Pablo Creek preservation and long-term management (Hodges II)					
	9A Jackson Turner Butler (JTB) to beach	209301-1	Duval	6	15.18	1999:p17
	9A Jackson Turner Butler (JTB) interchange	209278-1	Duval	6	13.87	1999:p17
	9A St. Johns Bluff to Beach	209168-1	Duval	6	22.65	1999:p17
SJ23	Basin 4. Western Basin 4 conservation areas (Jackson, Timber Forest, Bull Creek North, Longleaf Timber, Longbranch Farms)					
	Branan Field/Chaffee	209250-1	Duval	4	69.45	1997:p2, 2000:p7

Mit. ID	FDOT Project Name	FM Number	County	Basin	Impact Acres	Plan Index
	Branan Field/Chaffee Road	208225-1	Clay	4	5.60	1997:p23, 2000:p7
	CR-209 over Black Creek bridge replacement	211560-2	Clay	4	3.70	2007:p5
	I-10 Marietta interchange (Hammond Boulevard)	213301-2	Duval	4	1.29	2009:p8
	I-295 at Collins/Blanding	213345-1	Duval	4	25.33	2008:p8
	SR 228 SCLRR bridge #720045	209484-1	Duval	4	2.47	1997:p23, 2000:p7
	SR-23 (Branan Field Chaffee) — I-10 Interchange	213258-2	Duval	4	45.00	(blank)
	SR-23 (Branan Field Chaffee) from SR-134 to I-10	209659-5	Duval	4	83.53	2005:p8
	I-295 at Commonwealth	213259-4	Duval	4	1.75	2012:p8
	Branan Field frontage roads and lane additions	429304-2	Clay/Duval	4	53.79	2012:p8
SJ24	Basin 3. Upper Nassau River basin preservation (Four Creeks) and mitigation bank credits (NEFWMB)					
	SR 200 Griffin Road to I-95	210687-2	Nassau	3	22.60	2000:p1
	SR 200 Griffin Road to Stratton Road	210687-3	Nassau	3	33.38	2000:p1
	SR 200 Griffin Road to Stratton Road (mod)	2106870-3	Nassau	3	1.03	2000:p1
SJ25	Basin 4. Preservation at Pumpkin Hill/Timucuan Preserve (Birchfield, Fanning Island)					
	Cedar River bridge	209655-1	Duval	4	0.00	(blank)
	I-295 (Commonwealth to Trout River bridge)	213259-2	Duval	4	0.42	2002:p8
	I-95 (Lem Turner to Heckscher Drive)	213245-1	Duval	4	3.26	2001:p10
	I-95 from Heckscher Drive to I-295	213273-1	Duval	4	0.20	2000:p9, 2001:p10
	Jacksonville International Airport (JIA) access road	209399-1	Duval	4	10.35	2000:p9, 2001:p10
	Jacksonville International Airport (JIA) interchange	209399-2	Duval	4	0.51	2000:p9, 2001:p10
SJ26	Basin 6. Project withdrawn. Water quality enhancement and vegetation control at Guana River State Park					
	AIA from CR 210 to Duval County	210404-1	St. Johns	6	0.00	2000:p15
SJ27	Basin 8. Etoniah Creek CARL Project (Rice Creek) and Murphy Island					
	CR 309 Access Road	403855-1	Putnam	8	1.72	2002:p14
	SR 100 Little Rice Creek culvert replacement	210014-2	Putnam	8	0.85	2010:p11
	SR 15 (Dunns Creek Turn Lane)	210034-2	Putnam	8	0.00	(blank)
	SR 20 (Francis to SR 19)	210004-1	Putnam	8	2.28	2001:p20, 2002:p14
	SR 20 (Rowland Avenue to Francis)	209999-1	Putnam	8	40.63	2001:p20, 2002:p14
	SR 20 Rice and Sweetwater creeks bridges	209962-1	Putnam	8	6.17	1997:p26, 2000:p17, 2000:p13, 2001:p20
SJ28	Basin 17. Stormwater retrofit by City of South Daytona. Preservation (Paul Smith, Volusia 44, Krol)					
	I-4 (SR 44 to I-95)	408464-1	Volusia	17	58.22	2002:p30

Mit. ID	FDOT Project Name	FM Number	County	Basin	Impact Acres	Plan Index
	I-95 SR 40 to Flagler County	242696-1	Volusia	17	1.90	2000a:p9, 2001:p24, 2002:p30
	I-95 Volusia County to Palm Coast	242340-1	Flagler	9,17	9.68	2000:p22, 2001:p24, 2002:p30
	SR 100 (Belle Terre Parkway to I-95)	237925-1	Flagler	17	9.30	2001:p24, 2002:p30
	SR 40 (Cone Road to Tymber Creek)	241009-1	Volusia	17	14.83	2002:p30
SJ29	Basin 11. Northern Ocklawaha River Basin Group (Lybass, Rayonier/River Styx, Orange Creek, Cronos Cradle, Bloom/Frank)					
	SR 20 (CR 315 to Roland Avenue)	209969-1A	Putnam	11	6.15	2001:p34
	SR 20 (CR 315 to Roland Avenue) (2)	209969-1B	Putnam	11	0.22	2001:p34
	SR 20 (Hawthorne to CR 315)	210024-1	Putnam	11	0.00	(blank)
	SR 20 (SR 325 to Hawthorne)	207714-1	Alachua	11	12.70	2000:p24, 2001:p34
	SR-20 from U.S. 301 to Putnam County line	207818-2	Alachua	11	0.00	2005:p11
	SR 26/U.S. 301	207831-1	Alachua	11	20.58	2005:p11
	SR 26A 222 and 234	207796-3	Alachua	11	0.63	2007:p13
	SR 26A from SR-26 to SR-26	207790-1	Alachua	11	0.88	2005:p11
SJ30	Basins 21,22. Blueway acquisition and/or restoration at Pine Island					
	SR 5 (Post Road to SR 404-Pineda)	237550-1	Brevard	22	0.98	1999:p15
	SR 518 Causeway repairs	237724-1	Brevard	21,22	0.28	2000a:p5
	SR 518 Causeway repairs (mod1)	237724-1	Brevard	21,22	0.44	2000a:p5
	SR 528 (west bound lane Indian River bridge)	404601-1	Brevard	21	0.50	2002:p42
	U.S. 1 Goat Creek bridge	237674-1	Brevard	22	0.00	2000a:p5
	U.S. 192 Causeway repairs	237723-1	Brevard	22	0.00	2000a:p5
SJ32	Basin 4. Jacksonville West Project Group — Mitigation Bank credits (NEFWMD)					
	I-95/I-10 Interchange	213243-1	Duval	4	1.80	2003:p8
	Old Kings Road Bridge replacement	212079-1	Duval	4	0.37	2000a:p11
	U.S. 90 McGirts Creek bridge	209568-1	Duval	4	0.86	2000:p6, 2000a:p11
SJ34	Basin 3. Nassau River basin preservation (Logan, Four Creeks) and mitigation bank credits					
	SR 200 (Duval County to Thomas Creek)	210683-4	Nassau	3	51.81	2001:p8
	SR 200 (Thomas Creek to Callahan)	210683-3	Nassau	3	22.57	2001:p8
SJ35	Basins 5,9. Preservation and enhancement at Matanzas Marsh parcel (Rayonier/Matanzas Marsh)					
	I-95 (Equestrian crossing)	242345-1	Flagler	9	0.24	2001:p13
	I-95 (FECRR to SR 207)	213503-1	St. Johns	9	20.53	2001:p13
	I-95 (Flagler County to FEC RR)	213502-1	St. Johns	9	1.48	2002:p17
	I-95 (SR 207 to SR 16)	213505-1	St. Johns	9	2.78	2001:p13

Mit. ID	FDOT Project Name	FM Number	County	Basin	Impact Acres	Plan Index
	I-95 Palm Coast to St. Johns County	242341-1	Flagler	9	3.94	2000:p22, 2001:p24
	SR 207 (Permit modification in St. Johns County)	210224-1	St. Johns	9	0.35	2001:p13
SJ36	Basin 17. Stormwater retrofit by City of Port Orange, acquisition in Spruce Creek Preserve (Eubanks), and saltmarsh restoration (Parades)					
	SR 5A (Flomich to Wilmette)	240719-1	Volusia	17	0.00	2001:p27
	SR 5A (U.S. 1 to Village Trail)	240757-1	Volusia	17	14.90	2001:p27
	SR 5A (Village Trail to Herbert)	240720-1	Volusia	17	0.00	2001:p27
	SR 5A (Wilmette to U.S. 1)	240758-1	Volusia	17	2.33	2001:p27
SJ37	Basin 19. Preservation and enhancement in the Econlockhatchee River basin (LeFevre, Dietrich, Yarborough Ranch)					
	SR 436 (SR 528 to SR 552)	239454-2	Orange	19	11.97	2001:p31
	SR 50 (Dean Road to Old Cheney Road)	239203-4	Orange	19	16.76	2001:p31
	SR 50 (SR 417 to Dean Road)	239203-3	Orange	19	2.34	2001:p31
	SR 50 (SR 436 to SR 417)	239203-2	Orange	19	0.00	2001:p31
	SR 520 (SR 50 to SR 528)	239292-1	Orange	19	8.26	2002a:p2
SJ38	Basin 12. Southern Ocklawaha River Basin SWIM projects (Emeralda Marsh, North Shore Lake Apopka)					
	CR 44B (U.S. 441 to SR 44)	409870-1	Lake	12	0.03	2008:p14
	SR 19 (Juniper Springs Run bridge)	238770-2	Marion	14	0.00	(blank)
	SR 500 (Lake Ella Road to Avienda)	238395-5	Lake	12	0.00	2007:p16
	SR 500 (M.L.K. to Lake Ella Road)	238395-4	Lake	12	4.29	2007:p16
	SR 500 (Picciola Road to Sumter County)	238395-1	Lake	12	0.00	2003:p11
	SR 500 SR 44 to College Road	238315-1	Lake	12	4.65	1999:p14
	SR 500 SR44 to Picciola (Perkins to Griffin)	238394-1	Lake	12	0.00	2003:p11
	Turnpike/CR 470 interchange	404214-1	Lake	12	11.50	2001:p38
	U.S. 441 Perkins to SR 44	238394-3	Lake	12	0.56	2007:p16
	U.S. 27 (SR 25 south bound lane/Leesburg)	413950-1	Lake	12	0.54	2005:p19
SJ41	Basins 15. Restoration/preservation in the Wekiva River basin (Hubler, Sutton)					
	Commuter Rail Transit Phase 1	412994-4P1	Volusia	15	1.03	2009:p15
	Florida Turnpike (I-4 to Beulah)	406148-1	Orange	14	0.16	2005:p22
	I-4 (Saxon to SR 472)	242716-1	Volusia	14	0.44	2002:p23
	I-4 from Central Parkway to SR 434	242592-3	Seminole	15	0.01	2010:p14
	I-4 N of Kennedy to N of Maitland Boulevard	242484-6	Orange	23	0.28	2006:p20
	I-4 Orange County to Central Parkway	242592-2	Seminole	15	3.71	2007:p22
	Lake Norris Road bridge	241444-1	Lake	15	0.00	2002:p2
	SR 408 interchange	406102-1	Orange	15	0.00	2003:p18
	SR 423 (Shader Road to SR 424)	239496-2	Orange	15	0.00	(blank)
	SR 434 at Little Wekiva outfall	423513-1	Seminole	15	0.00	2009:p15
	SR 438 (Clark to Hiawasse)	239289-1	Orange	15	0.00	(blank)

Mit. ID	FDOT Project Name	FM Number	County	Basin	Impact Acres	Plan Index
	SR 50 (SR 429 to Good Homes Road)	239535-3	Orange	12,15	3.31	2004:p14
	SR 50 (Good Homes to Pine Hills)	239535-4	Orange	15	2.98	2006:p8
	U.S. 441 By-pass (CR 437 to CR 424)	239414-1	Orange	12,15	0.00	(blank)
SJ42	Basin 18. Mitigation Bank credits, preservation in Volusia Corridor and Tiger Bay connector (Menard, Marvin Fore, Donald Fore, WT Ranch, Plum Creek, Volusia 44)					
	I-4 (SR 472 to SR 44 and interchange)	408463-1	Volusia	18	19.66	2002:p34
	I-4 (SR 44 to I-95)	408464-1	Volusia	18	38.44	2002:p34
	SR 415 (Reed Ellis to Acorn)	407355-4	Volusia	18	5.54	2006:p11
	SR 415 (Seminole County to Reed Ellis Road)	407355-3	Volusia	18	36.09	2006:p11
	SR 415 (SR 46 to Volusia County)	407355-1	Seminole	18	6.96	2006:p11
SJ43	Basins 18, 20. Marsh restoration at Lake Harney by Seminole County government					
	SR 46 (Volusia County to Carpenter)	237711-1	Brevard	18	2.10	2002:p36
SJ44	Basin 18. Project withdrawn. City of Orlando — Southeast Lake Basin Restoration Project					
	I-4/East-West interchange	242484-2	Orange	18	0.00	2002:p39
SJ45	Basin 18 Preservation and enhancement in Basin 18 (Maytown Tract) and mitigation bank credits					
	I-4 West of Orange Blossom Trail south of Ivanhoe	242484-4	Orange	18	3.95	2005:p28, 2009:p24
	I-95 (SR 528 to SR 50)	405506-2	Brevard	18	21.33	2005:p28, 2009:p24
	I-95 (SR 519 to SR 528)	405506-5	Brevard	18	17.32	2003:p21, 2009:p24
	SR 5 (Barnes to SR 520)	237576-1	Brevard	20	0.00	2002:p47
	SR 5 (SR 520 to Cidco Road)	237592-1	Brevard	20	0.00	2002:p47
SJ46	Basin 21. Restoration/preservation at Turnbull Hammock (Peters, Hart, Cape Atlantic Estates)					
	I-95 Brevard County line to SR 44	406869-4	Volusia	21	36.74	2007:p35
	SR 442 (I-95 to Air Park Road)	240812-1	Volusia	21	0.00	2002:p49
	SR 442 (U.S. 1 to Air Park Road)	240811-1	Volusia	21	16.77	2002:p49
	U.S. 1 (Turnbull Creek bridge)	241043-1	Volusia	21	0.00	(blank)
	U.S. 1 at Barnes Boulevard	237576-3	Brevard	21	2.10	2008:p24
SJ48	Basin 20. BCWMA enhancement, Fellsmere Farms restoration					
	I-95 at Pineda interchange	405506-6	Brevard	20	14.10	2006:p14
	I-95 SR 514 to SR 518	405506-3	Brevard	20	20.36	2003:p21
	I-95 SR 518 to SR 519	405506-4	Brevard	20	6.89	2003:p21
	I-95 SR 519 to SR 528	405506-5	Brevard	20	12.59	2003:p21
	SR 60 west of 82nd Avenue to 66th Avenue	228627-1	Indian River	22	1.76	2008:p27
	SR 60 Florida Turnpike to I-95	228596-1	Indian River	20	2.84	2005:p31
	SR 60 west of I-95 to 82nd Avenue	228628-1	Indian River	22	0.13	2008:p27
SJ49	Basin 12. Mitigation bank credits (changed to SJ58; see 2008 Plan)					

Mit. ID	FDOT Project Name	FM Number	County	Basin	Impact Acres	Plan Index
	No projects	(blank)	(blank)	(blank)	(blank)	(blank)
SJ50	Basin 4. Mitigation Bank Project Group (Bull Creek, Longbranch Crossing)					
	Doctors Inlet bridge	208207-1	Clay	4	0.62	2005:p5
	I-10 BFC to I-295	213272-4	Duval	4	11.88	2007:p8
	I-295 (Blanding Boulevard ramps)	213351-5	Duval	4	6.13	2002:p11
	I-95/I-295 North interchange	213323-4	Duval	4	0.75	2005:p5
	SR 21 Old Jennings Road to Knight Boxx Road	208211-2	Clay	4	1.68	2006:p6
SJ51	Basin 22. Restoration and enhancement (Herndon Swamp/Wheeler Groves, Sembler)					
	Apollo Sarno to Eau Gallie	241241-1	Brevard	22	1.93	2007:p38
	Babcock Street (Malabar to Hunter)	237650-4	Brevard	22	0.00	(blank)
	Babcock Street (Malabar to U.S. 192) —see Inv. 0044	237650-3	Brevard	22	0.00	2006:p17
	Babcock Street (SR 507 Melbourne Avenue)	237650-2	Brevard	22	0.00	2003:p21
	Gradick Drive at Goat Creek bridge	241210-1	Brevard	22	0.00	2002:p42
	I-95 (Palm Bay rest areas)	242318-1	Brevard	22	7.18	2002:p42; 2003:p21
	I-95 SR 514 to SR 518	405506-3	Brevard	22	0.55	2003:p21
	Palm Bay Road (Minton to Conlin)	241221-1	Brevard	22	6.06	2002:p42; 2004:p7
	Port Malabar Road at Turkey Creek bridge	241211-1	Brevard	22	0.00	(blank)
	Vero Beach Municipal Airport	409842-1	Indian River	22	0.00	2005:p31
	Wickham Road at NASA/Ellis Road	404667-1	Brevard	22	0.49	2004:p19
SJ52	Basin 17. Mitigation bank credits, preservation and enhancement (Krol, Paredes, Nordstrom, Dan Paul, Ford)					
	Amaral Plaza (U.S. 1/SR 5)	428918-1	Volusia	17	0.18	2011:p5
	I-4, SR 44 to I-95 (Flyover Ramp)	408464-1	Volusia	17	0.00	2012:p5
	I-95 Brevard County line to SR 44	406869-4	Volusia	17	16.52	2007:p25
	I-95 So of I-4 to U.S. 92	242715-2	Volusia	17	16.06	2009:p19
	I-95 SR 44 to I-4	406869-6	Volusia	17	76.50	2007:p25
	SR 483 (Clyde Morris) Beville Road to U.S. 92	408178-1	Volusia	17	0.00	2012:p5
SJ53	Basin 18. Preservation and enhancement (Maytown, Yarborough, Kemcho) and mitigation bank credits					
	Commuter Rail Phase 1	412994-4P1	Volusia	18	5.15	2008:p21
	Commuter Rail stations	412994-4S	Seminole	18	6.50	2008:p21
	I-95 Brevard County line to SR 44	406869-4	Volusia	18	22.45	2007:p29
	I-95 -SR 46 to Volusia County line	406869-5	Brevard	18	7.14	2007:p29
	I-95 SR 50 to SR 46	406869-3	Brevard	18	5.84	2007:p29
	SR 46 Mellonville to SR 415	240216-2	Seminole	18	7.38	2007:p29
SJ54	Basin 22. Central Indian River Lagoon restoration and enhancement					
	U.S. 1 Emergency slope repairs	420930-1	Brevard	22	1.00	2007:p41
SJ55	Basins 1,2. Mitigation bank credits					

Mit. ID	FDOT Project Name	FM Number	County	Basin	Impact Acres	Plan Index
	CR 125 St. Marys River (S. Prong) bridge	211448-1	Baker	1	0.92	2009:p5
SJ56	Basins 14,16. Preservation as additions to Heart Island Conservation Area or other adjacent conservation lands (Strawn)					
	Commuter Rail Transit Phase 1	412994-4P1	Volusia	14	1.55	2009:p11
	U.S. 92 Multiuse Path U.S. 17 to Kepler	417205-1	Volusia	16	0.99	2009:p11
	U.S. 17/SR15 DeLeon Springs to SR 40	410251-1	Volusia	14	5.50	2016:p13
SJ57	Basin 22. Preservation/enhancement and/or District water quality improvement or restoration project (Herndon/Micco, Sembler)					
	I-95 North of CR 512 to SR 514	413072-1	Brevard	22	21.13	2008:p30
	SR 5 (U.S. 1) south of Highlands Drive to south of Oslo Road	228583-4	Indian River	22	2.20	2012:p17
	SR 9 (I-95) Indian River County line to SR 60	413048-1	Indian River	22	0.36	2012:p17
	I-95/SR 9 from SR 60 to Brevard County line	413049-2	Indian River	22	2.02	2012:p29
	SR 507 (Babcock Street) from Malabar Road to Palm Bay Road	237650-6	Brevard	22	0.28	2015:p8
	CRCG pedestrian path	432574-2	Brevard	22	2.53	2015:p8
SJ58	Basin 12. Pres/enhance as additions to existing conservation lands in Basin 12 and/or restoration/enhancement (Lake Apopka, Lewis, and Emerald Marsh)					
	Florida Turnpike (I-4 to Beulah)	406148-1	Orange	12	0.42	2008:p33
	Florida Turnpike (SR 429 to SR 50 North)	406146-1	Orange	12	18.82	2008:p33
	SR 50 Avalon Road to SR 429	410983-1	Orange	12	0.00	2008:p33
	SR 50 Hancock Road to Orange/Lake County line	238429-4	Lake	12	0.00	2008:p33
	SR 50 Turnpike to Avalon Road	239535-2	Orange	12	0.39	2008:p33
SJ65	Basin 11. Fowler's Prairie					
	SR 20 through Fowler's Prairie	210024-4	Putnam	11	8.66	2014:p8
	SR 20, East of U.S. 301 to Putnam County line	207818-1	Alachua/Putnam	11	0.70	2014:p8
	UF Greenway and Trails Seg. 1	428896-1	Alachua	11	0.31	2014:p8
	UF Greenway and Trails Seg. 2	430614-1	Alachua	11	0.04	2014:p8



St. Johns River Water Management District

4049 Reid Street

Palatka, Florida 32177

Telephone: 386-329-4500 or Toll Free: 800-451-7106

Facsimile: 386-329-4125

Website: www.sjrwmd.com