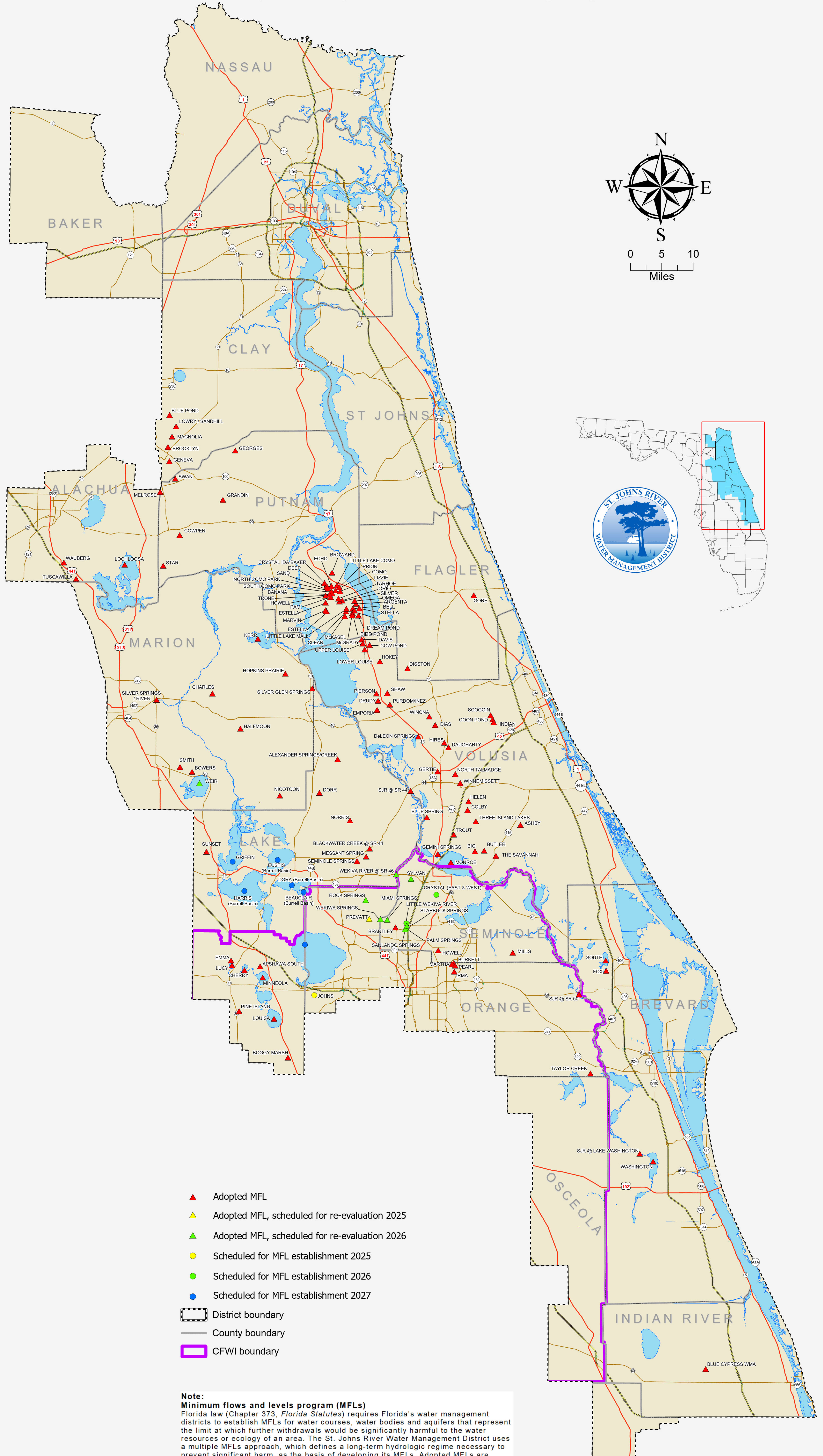
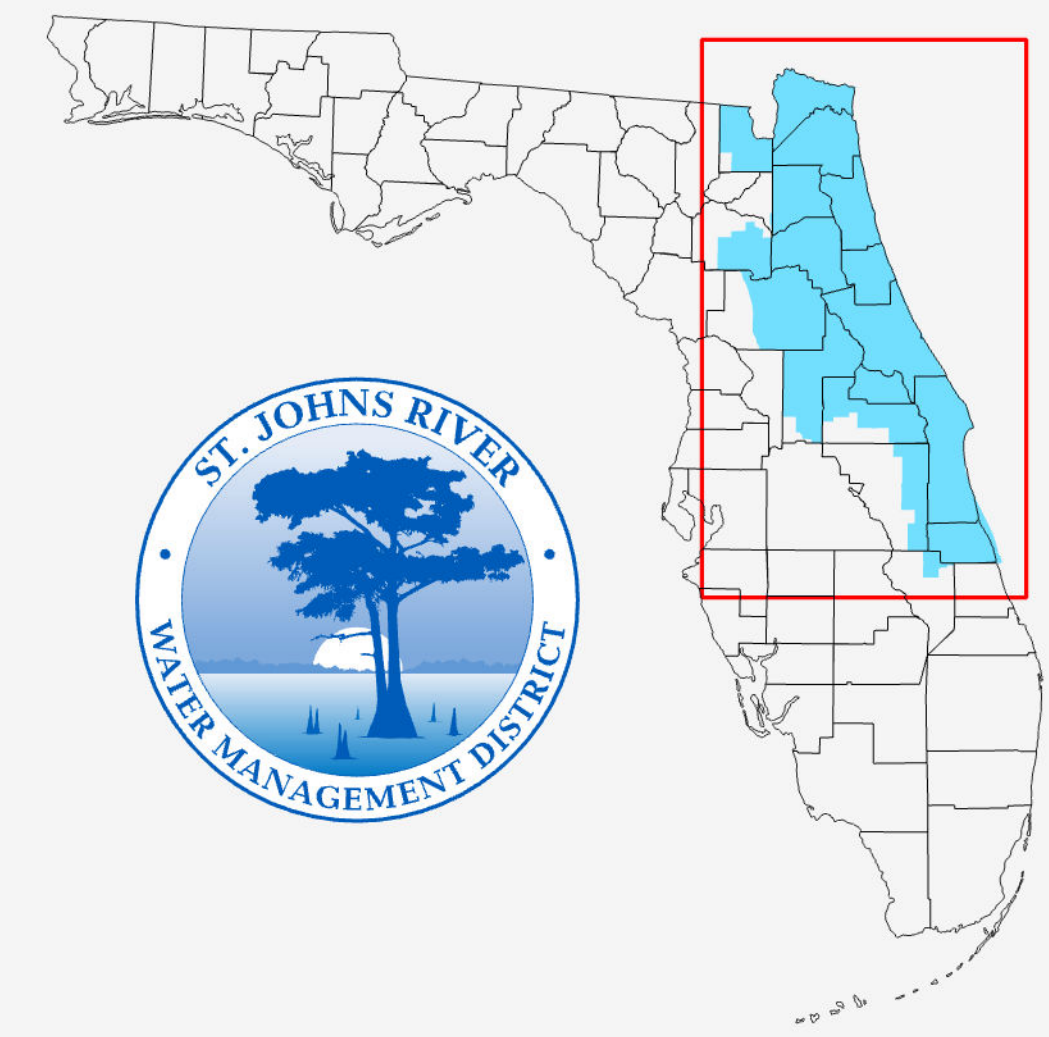
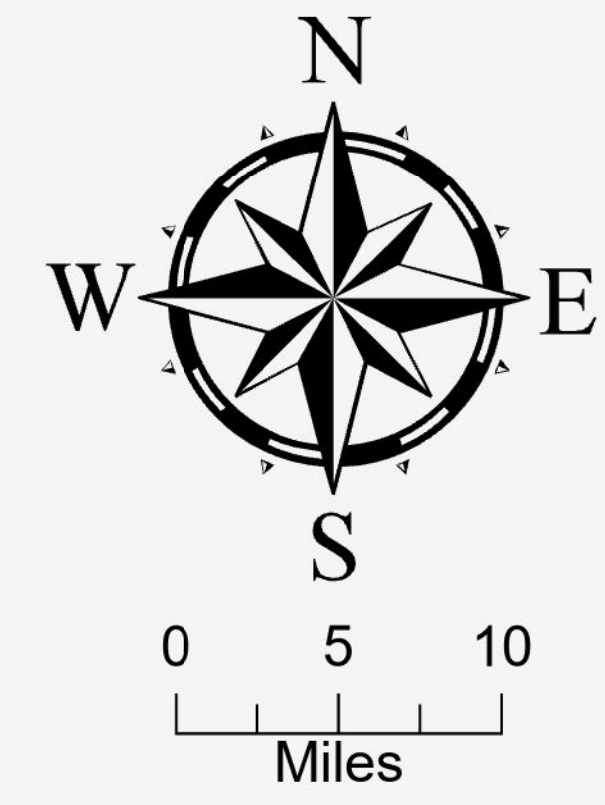


St. Johns River Water Management District Minimum Flows and Levels (MFLs) 2024 Priority Systems



Waterbody

- | | |
|----------------------------------|------------------------------|
| ▲ ALEXANDER SPRINGS/CREEK - H6 | ▲ LOCHLOOSA - F4 |
| ● APOPKA - J6 | ▲ LOUISA - J5 |
| ▲ APISHAWA SOUTH - J5 | ▲ LOWER LOUISE - G6 |
| ▲ ARGENTA - G6 | ▲ LOWRY - E5 |
| ▲ ASHBY - I8 | ▲ LUCY - J5 |
| ▲ BANANA - G6 | ▲ MAGNOLIA - E5 |
| ● BEAUCLAIR - I6 | ▲ MARGARET - G6 |
| ▲ BELL - G6 | ▲ MARTHA - J7 |
| ▲ BIG - I7 | ▲ MARVIN - G6 |
| ▲ BIRD POND - G6 | ▲ McGRADY - G6 |
| ▲ BLACK WATER CREEK @ SR 44 - I6 | ▲ McKASEL - G6 |
| ▲ BLUE CYPRESS WMA - M9 | ▲ MELROSE - F4 |
| ▲ BLUE POND - E5 | ▲ MESSANT SPRING - I6 |
| ▲ BLUE SPRING - I7 | ▲ MIAMI SPRINGS - I6 |
| ▲ BOGGY MARSH - K6 | ▲ MILLS - J7 |
| ▲ BOWERS - H5 | ▲ MINNEOLA - J5 |
| ▲ BRANTLEY - I6 | ▲ MONROE - I7 |
| ▲ BROWARD - F6 | ▲ NICOTON - H5 |
| ▲ BURKETT - J7 | ▲ NORRIS - I6 |
| ▲ BUTLER - I7 | ▲ NORTH COMO PARK - G6 |
| ▲ CHARLES - G5 | ▲ NORTH TALMADGE - H7 |
| ▲ CHERRY - J5 | ▲ OMEGA - G6 |
| ▲ CLEAR - G6 | ▲ ORIO - G6 |
| ▲ COLBY - H7 | ▲ PALM SPRINGS - J7 |
| ▲ COMO - G6 | ▲ PAM - G6 |
| ▲ COON POND - H7 | ▲ PEARL - J7 |
| ▲ COW POND - G6 | ▲ PIERSON - G6 |
| ▲ COWPEN - F5 | ▲ PINE ISLAND - J5 |
| ● CRYSTAL (EAST & WEST) - I7 | ▲ PREVATT - I6 |
| ▲ CRYSTAL IDA BAKER - F6 | ▲ PRIOR - F6 |
| ▲ DAUGHARTY - H7 | ▲ PURDOM/INEZ - H6 |
| ▲ DAVIS - G6 | ▲ ROCK SPRINGS - I6 |
| ▲ DEEP - F6 | ▲ SAND - F6 |
| ▲ DeLEON SPRINGS - H7 | ▲ SANLANDO SPRINGS - J7 |
| ▲ DIAS - H7 | ▲ SCOGGIN - H7 |
| ▲ DISSTON - G7 | ▲ SEMINOLE SPRINGS - I6 |
| ● DORA - I6 | ▲ SHAW - G6 |
| ▲ DORR - H6 | ▲ SILVER - G6 |
| ▲ DREAM POND - G6 | ▲ SILVER GLEN SPRINGS - G6 |
| ▲ DRUDY - G6 | ▲ SILVER SPRINGS/RIVER - G4 |
| ▲ ECHO - F6 | ▲ SJR @ LAKE WASHINGTON - K9 |
| ▲ EMMA - J5 | ▲ SJR @ SR 44 - H7 |
| ▲ EMPORIA - H6 | ▲ SJR @ SR 50 - J8 |
| ▲ ENGLISH/NETTLES - G6 | ▲ SMITH - H5 |
| ▲ ESTELLA - G6 | ▲ SOUTH - J8 |
| ● EUSTIS - I5 | ▲ SOUTH COMO PARK - G6 |
| ▲ FOX - J8 | ▲ STAR - F5 |
| ▲ GEMINI SPRINGS - I7 | ▲ STARBUCK SPRING - I7 |
| ▲ GENEVA - E5 | ▲ STELLA - G6 |
| ▲ GEORGES - E5 | ▲ SUNSET - I5 |
| ▲ GERTIE - H7 | ▲ SWAN - F5 |
| ▲ GORE - G7 | ▲ SYLVAN - I7 |
| ▲ GRANDIN - F5 | ▲ TARHOE - G6 |
| ● GRIFFIN - I5 | ▲ TAYLOR CREEK - K8 |
| ▲ HALFMOON - H5 | ▲ THE SAVANNAH - I7 |
| ● HARRIS - I5 | ▲ THREE ISLAND LAKES - I7 |
| ▲ HELEN - H7 | ▲ TRONE - G6 |
| ▲ HIRES - H7 | ▲ TROUT - I7 |
| ▲ HOKEY - G6 | ▲ TUSCAWILLA - F4 |
| ▲ HOPKINS PRAIRIE - G6 | ▲ UPPER LOUISE - G6 |
| ▲ HOWELL - G6 | ▲ WASHINGTON - L9 |
| ▲ INDIAN - H7 | ▲ WAUBERG - F4 |
| ▲ IRMA - J7 | ▲ WEIR - I5 |
| ● JOHNS - J6 | ▲ WEKIVA RIVER @ SR 46 - I6 |
| ▲ KERR - G5 | ▲ WEKIVA SPRINGS - I6 |
| ▲ LITTLE LAKE COMO - F6 | ▲ WINNEMISSETT - H7 |
| ▲ LITTLE LAKE MALL - G6 | ▲ WINONA - H7 |
| ● LITTLE WEKIVA RIVER - I7 | |
| ▲ LIZZIE - G6 | |

- ▲ Adopted MFL
- ▲ Adopted MFL, scheduled for re-evaluation 2025
- ▲ Adopted MFL, scheduled for re-evaluation 2026
- Scheduled for MFL establishment 2025
- Scheduled for MFL establishment 2026
- Scheduled for MFL establishment 2027
- District boundary
- County boundary
- ▭ CFWI boundary

Note:
Minimum flows and levels program (MFLs)
 Florida law (Chapter 373, *Florida Statutes*) requires Florida's water management districts to establish MFLs for water courses, water bodies and aquifers that represent the limit at which further withdrawals would be significantly harmful to the water resources or ecology of an area. The St. Johns River Water Management District uses a multiple MFLs approach, which defines a long-term hydrologic regime necessary to prevent significant harm, as the basis of developing its MFLs. Adopted MFLs are implemented through consumptive use permitting and water supply planning programs. A priority list and schedule for establishing MFLs is submitted annually to the Florida Department of Environmental Protection, as required by law.