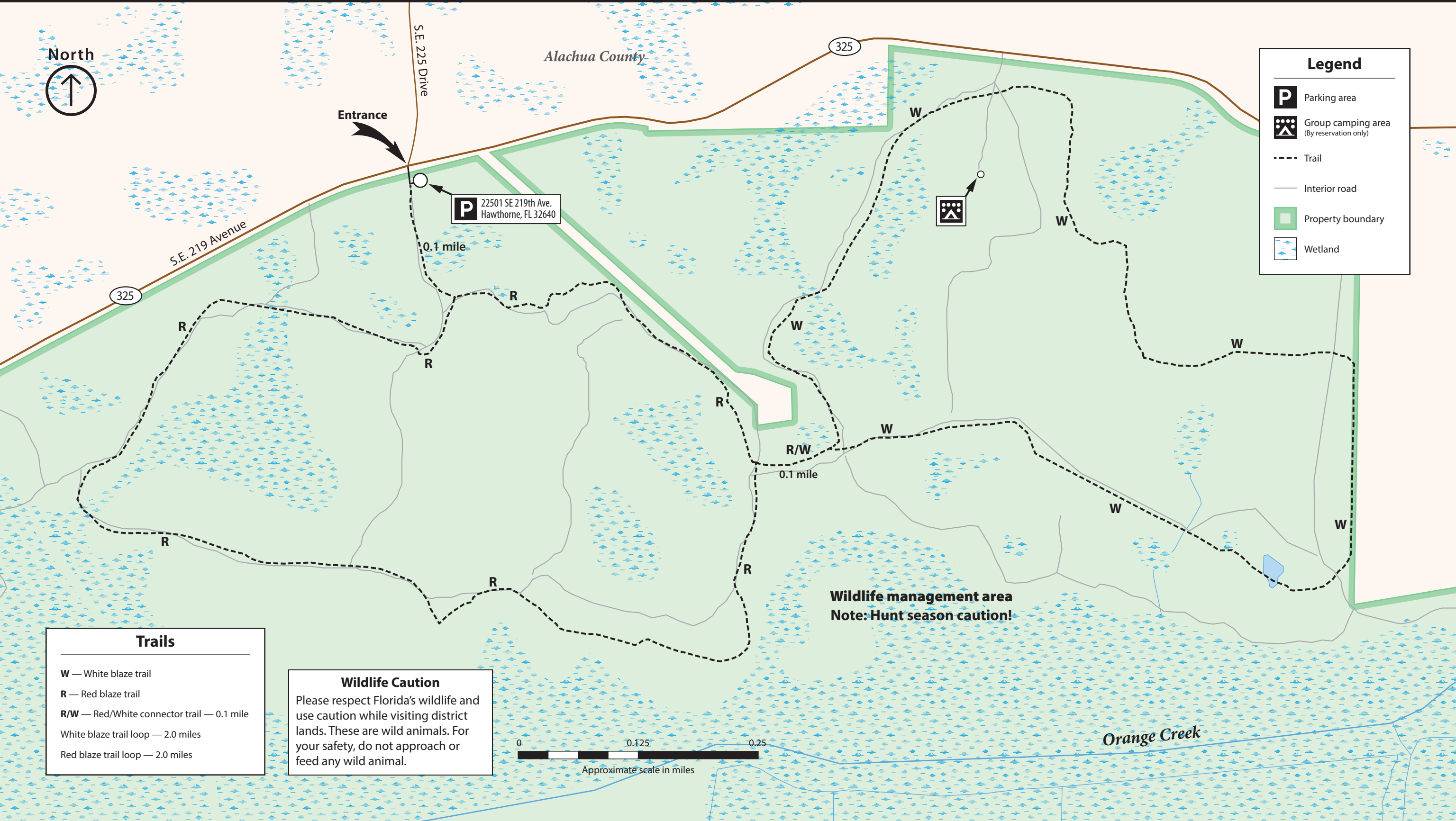




# Orange Creek Restoration Area — North



Entrance

**P** 22501 SE 219th Ave.  
Hawthorne, FL 32640

0.1 mile

325

Alachua County

S.E. 219 Avenue

325



R/W

0.1 mile

**Wildlife management area**  
**Note: Hunt season caution!**

## Trails

- W** — White blaze trail
- R** — Red blaze trail
- R/W** — Red/White connector trail — 0.1 mile
- White blaze trail loop — 2.0 miles
- Red blaze trail loop — 2.0 miles

## Wildlife Caution

Please respect Florida's wildlife and use caution while visiting district lands. These are wild animals. For your safety, do not approach or feed any wild animal.



## Legend

- P** Parking area
- Group camping area  
(By reservation only)
- Trail
- Interior road
- Property boundary
- Wetland

Orange Creek