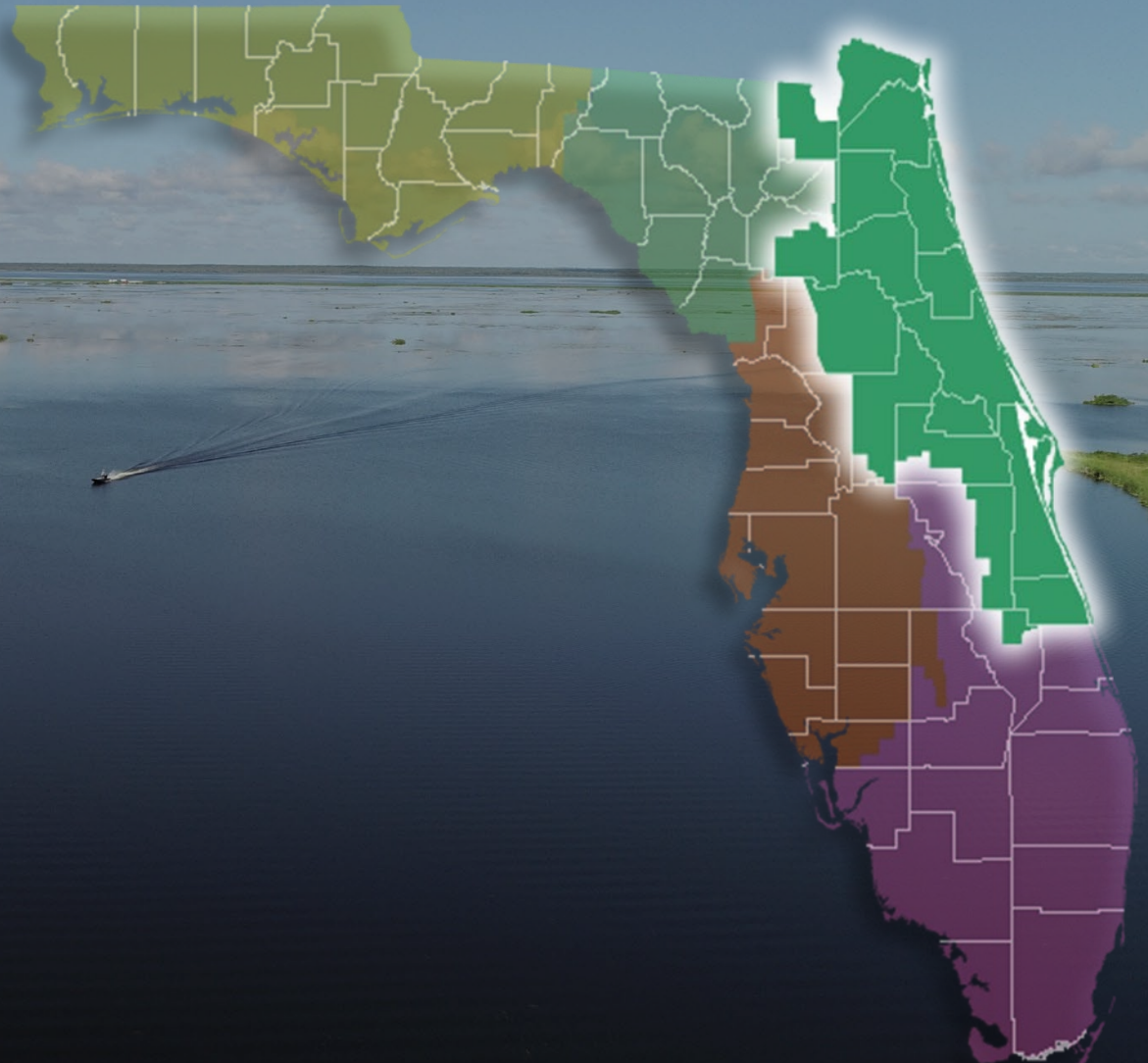


Hydrologic Conditions Report

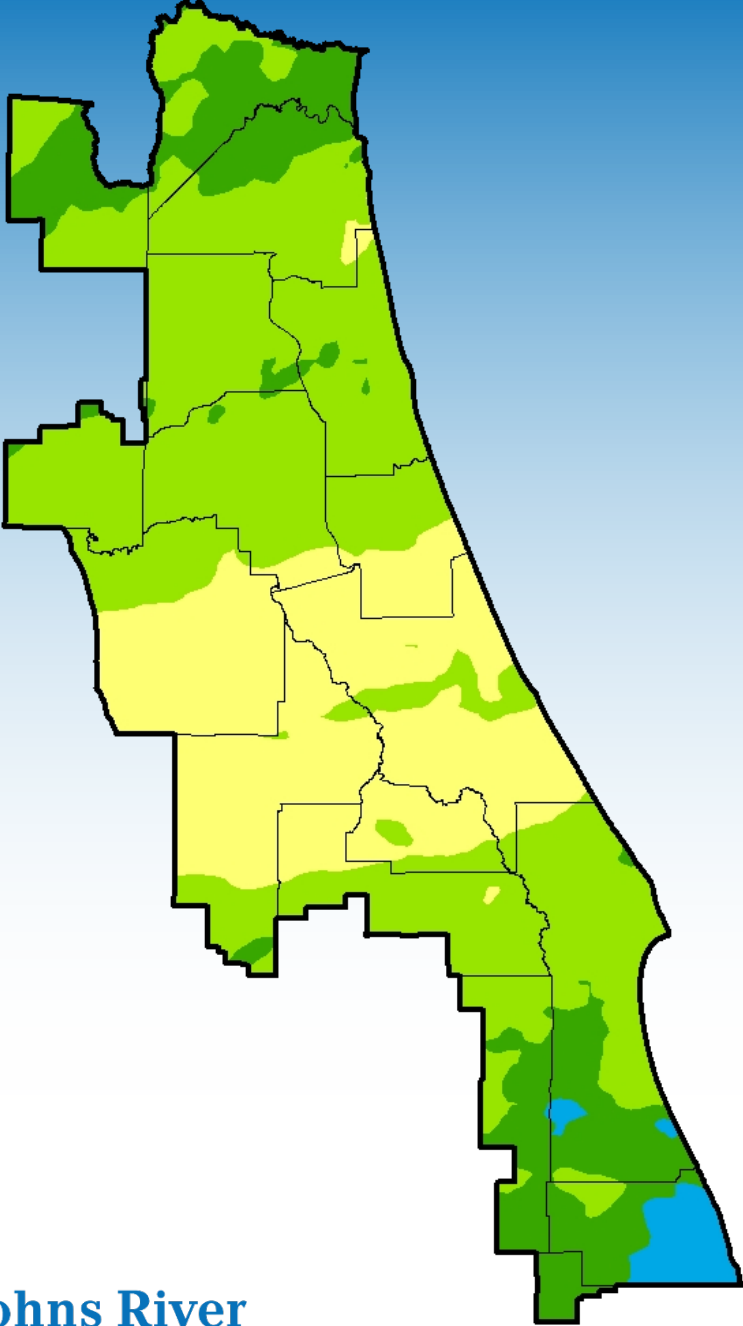
March 2025
Agenda Item 2

Tim Miller, Bureau Chief
Water Resource Information

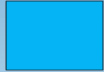
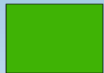
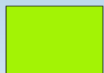
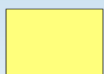


St. Johns River
Water Management District

Monthly Rainfall February 2025



Inches

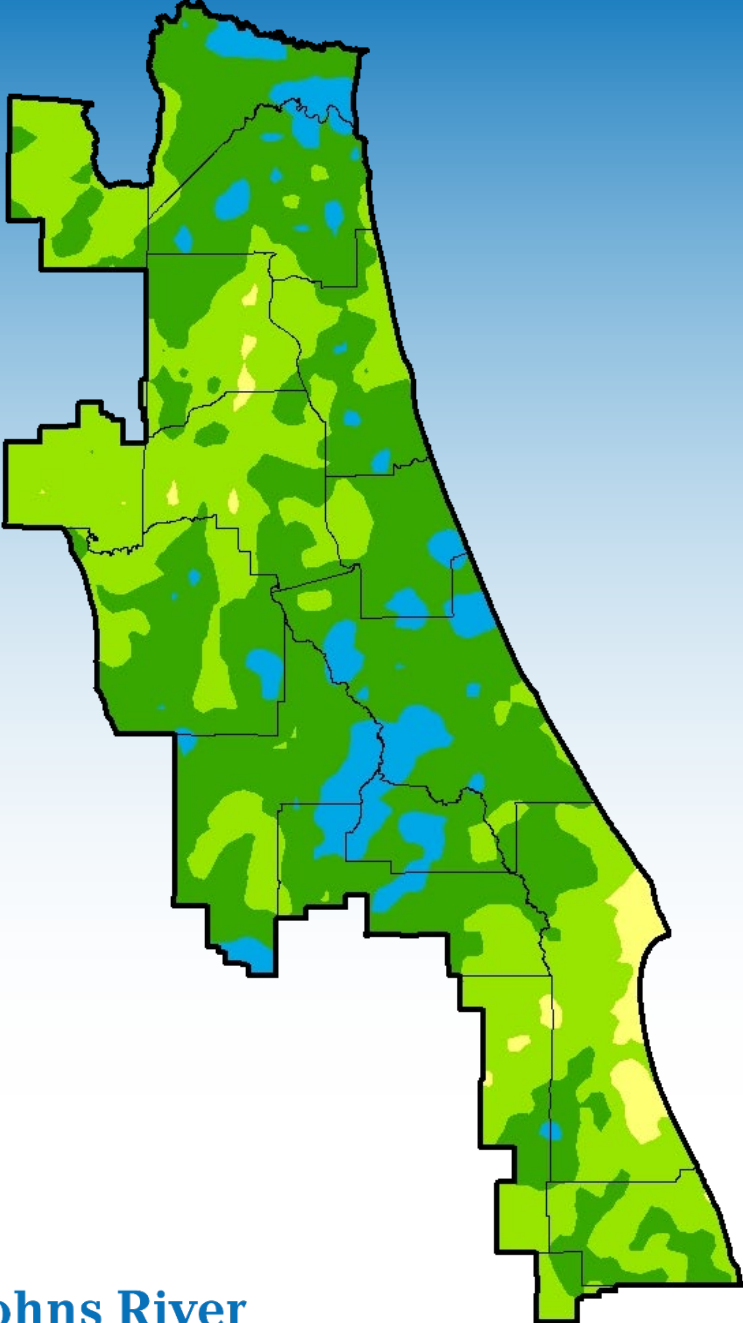
-  More than 3
-  2 to 3
-  1 to 2
-  Less than 1

District average

Monthly Total	Average	Departure
1.55	2.94	-1.39

Annual Rainfall

March 2024 to February 2025



Inches

- More than 60
- 50 to 60
- 40 to 50
- Less than 40

District average,
Cumulative through February 2025

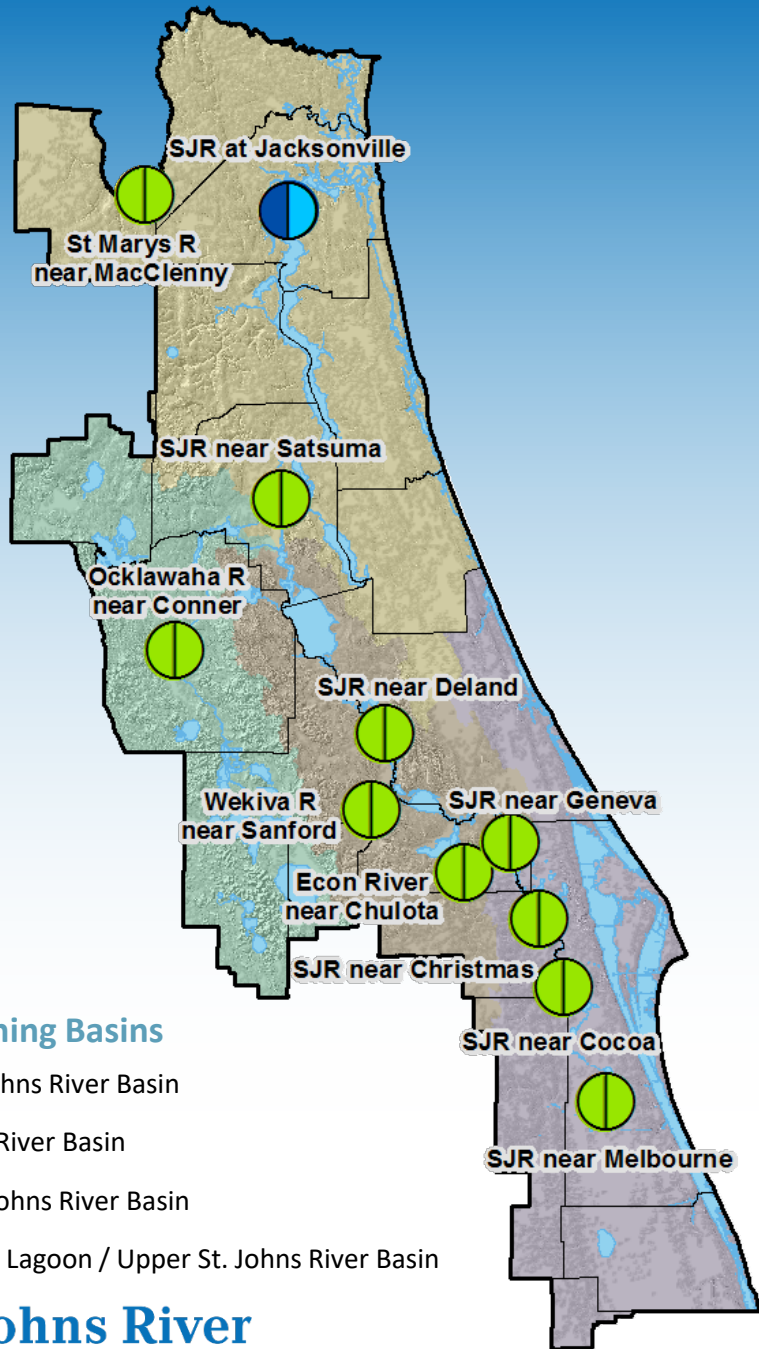
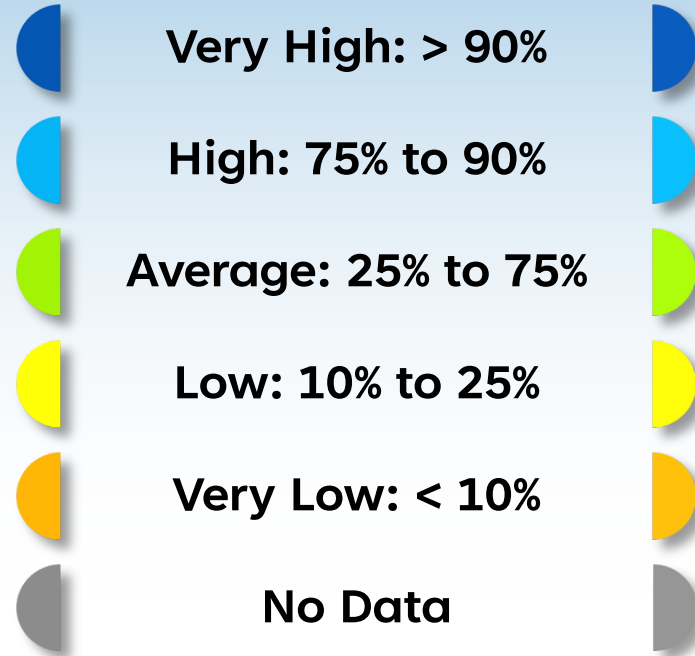
12 Month Total	Average	Departure
52.48	51.01	1.47

Surface Water Flow Conditions as Compared to Historical Statistics

February 2025

February 1

March 1

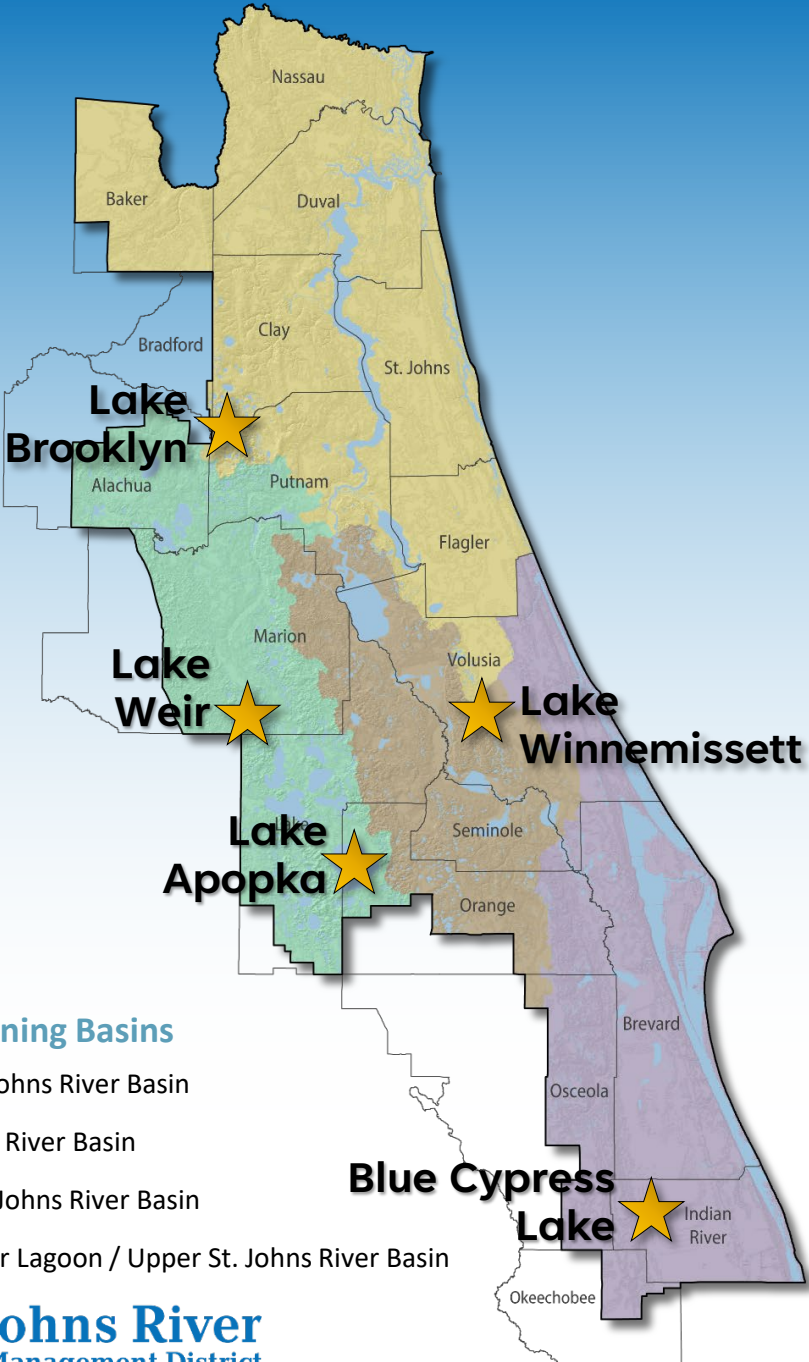


Strategic Planning Basins

- Lower St. Johns River Basin
- Ocklawaha River Basin
- Middle St. Johns River Basin
- Indian River Lagoon / Upper St. Johns River Basin

Lake Levels

February 2025
In 5 District lakes



Blue Cypress Lake

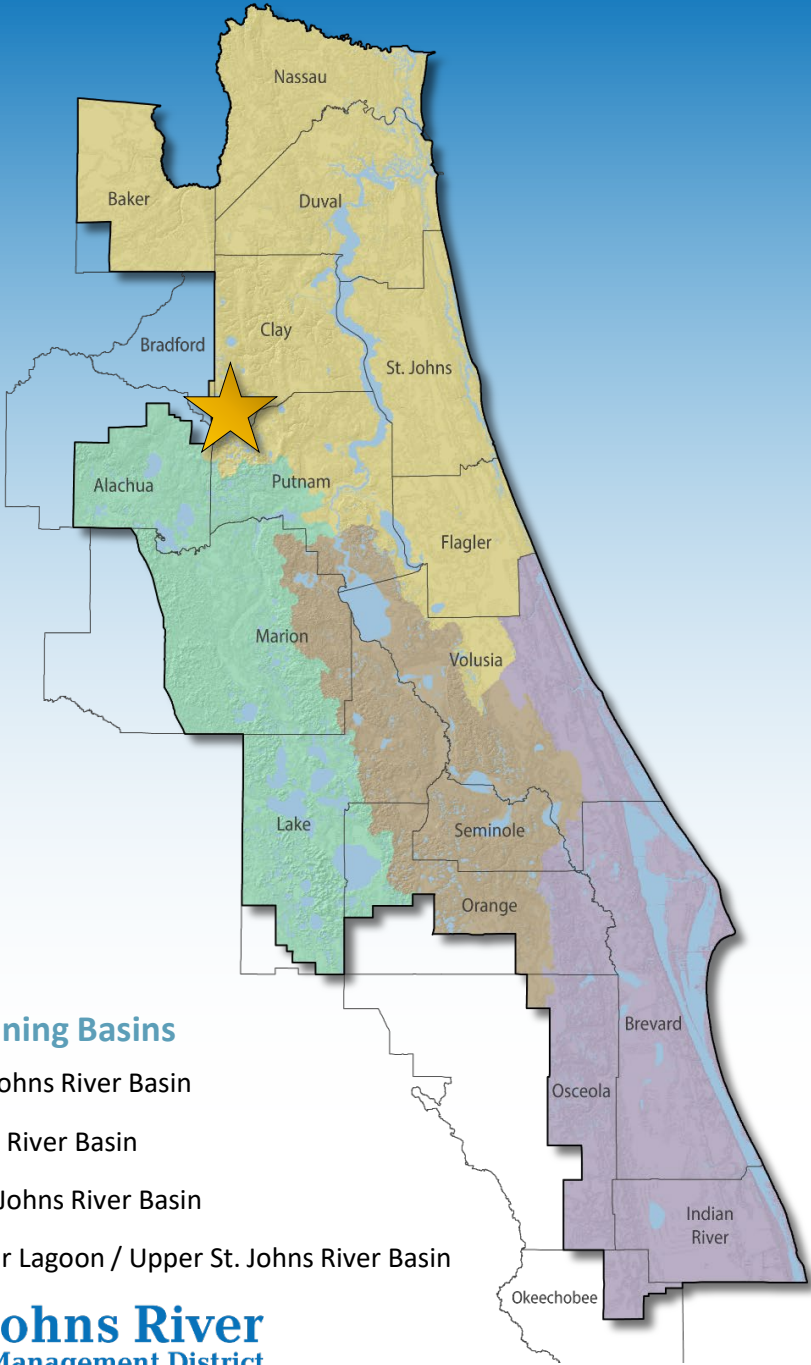
Strategic Planning Basins

- Lower St. Johns River Basin
- Ocklawaha River Basin
- Middle St. Johns River Basin
- Indian River Lagoon / Upper St. Johns River Basin

Lake Brooklyn Levels

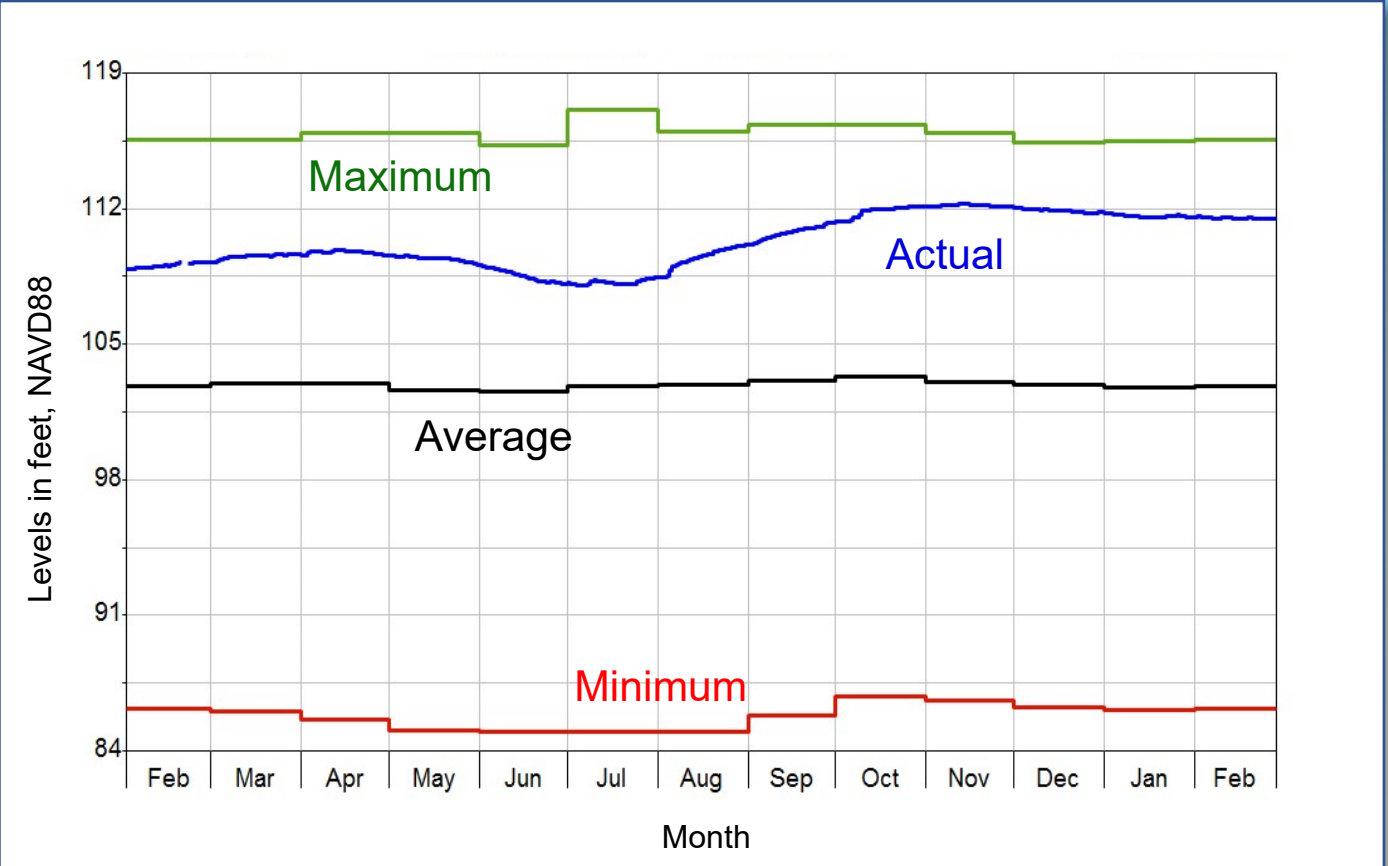
February 2025

111.5 feet



Strategic Planning Basins

- Lower St. Johns River Basin
- Ocklawaha River Basin
- Middle St. Johns River Basin
- Indian River Lagoon / Upper St. Johns River Basin

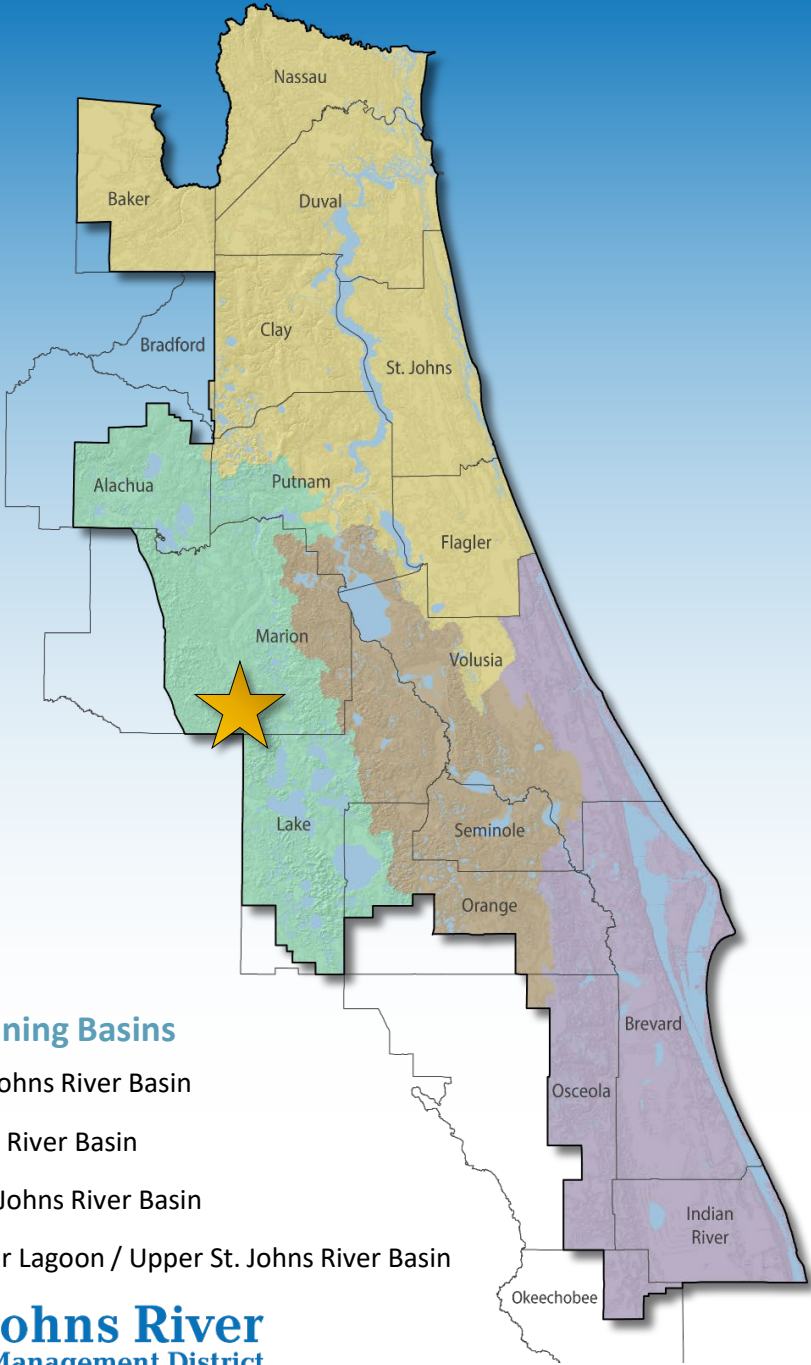


0.1 ft. decrease over previous month

Lake Weir Levels

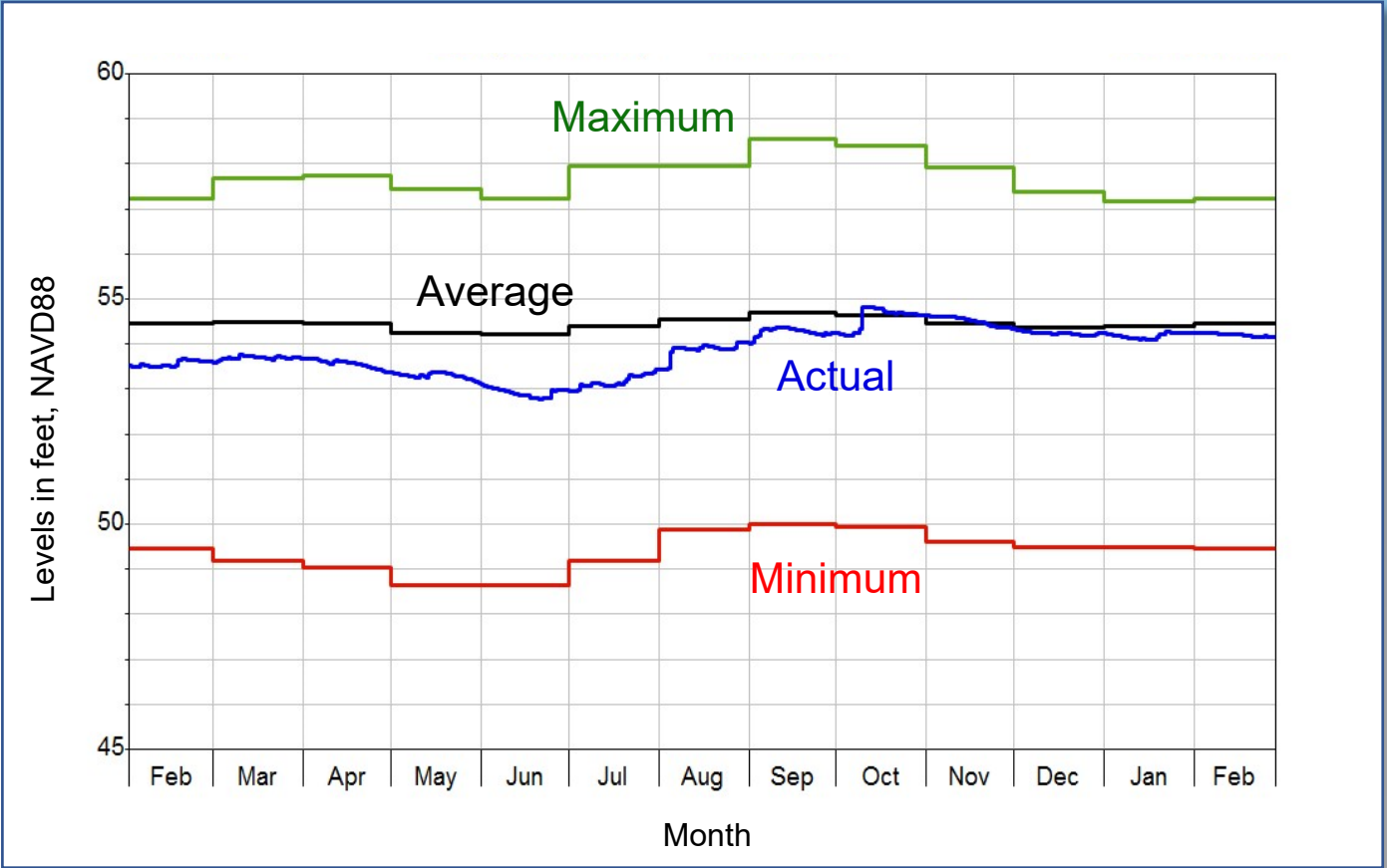
February 2025

54.2 feet



Strategic Planning Basins

- Lower St. Johns River Basin
- Ocklawaha River Basin
- Middle St. Johns River Basin
- Indian River Lagoon / Upper St. Johns River Basin

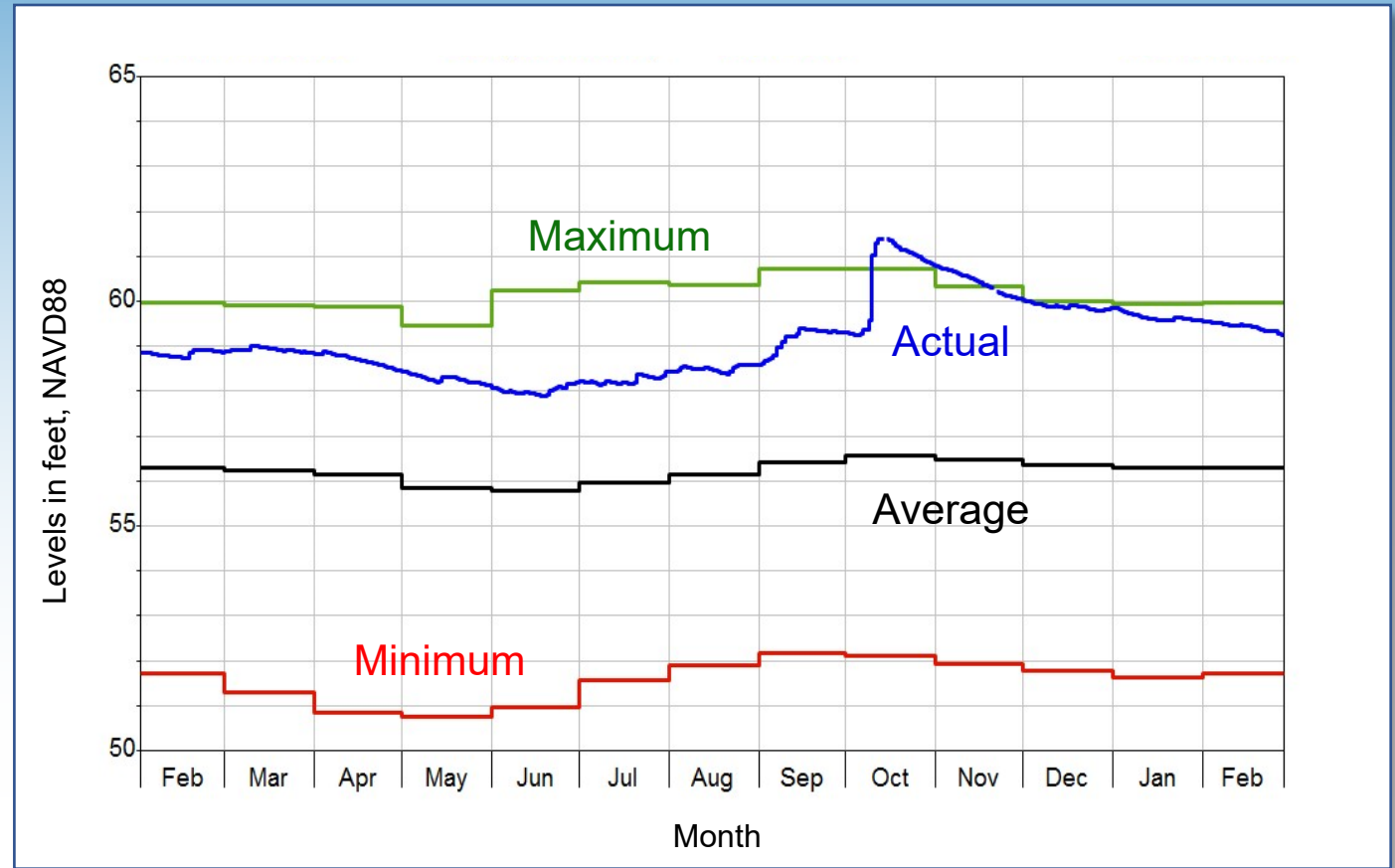
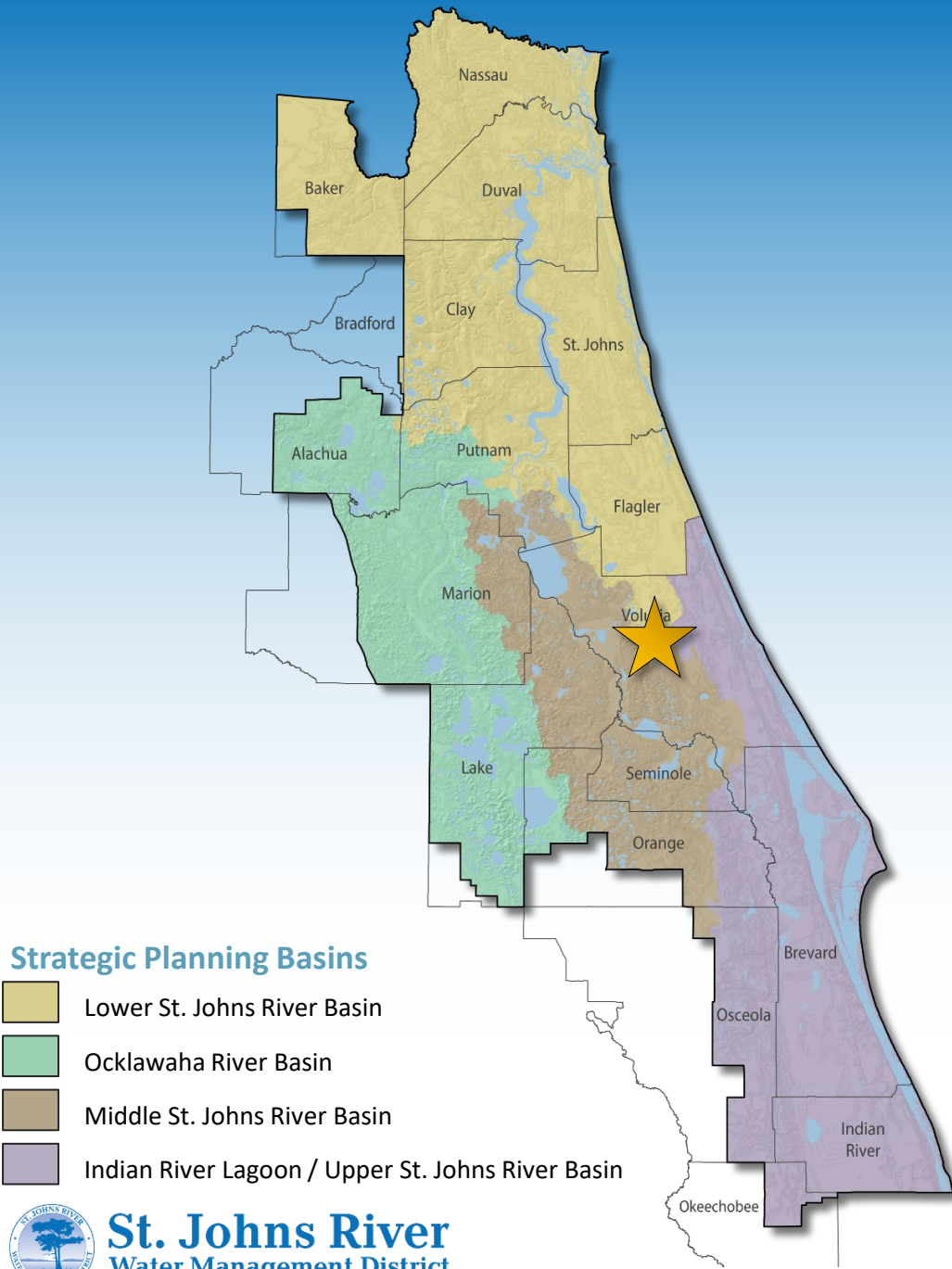


0.1 ft. decrease over previous month

Lake Winnemissett Levels

February 2025

59.3 feet

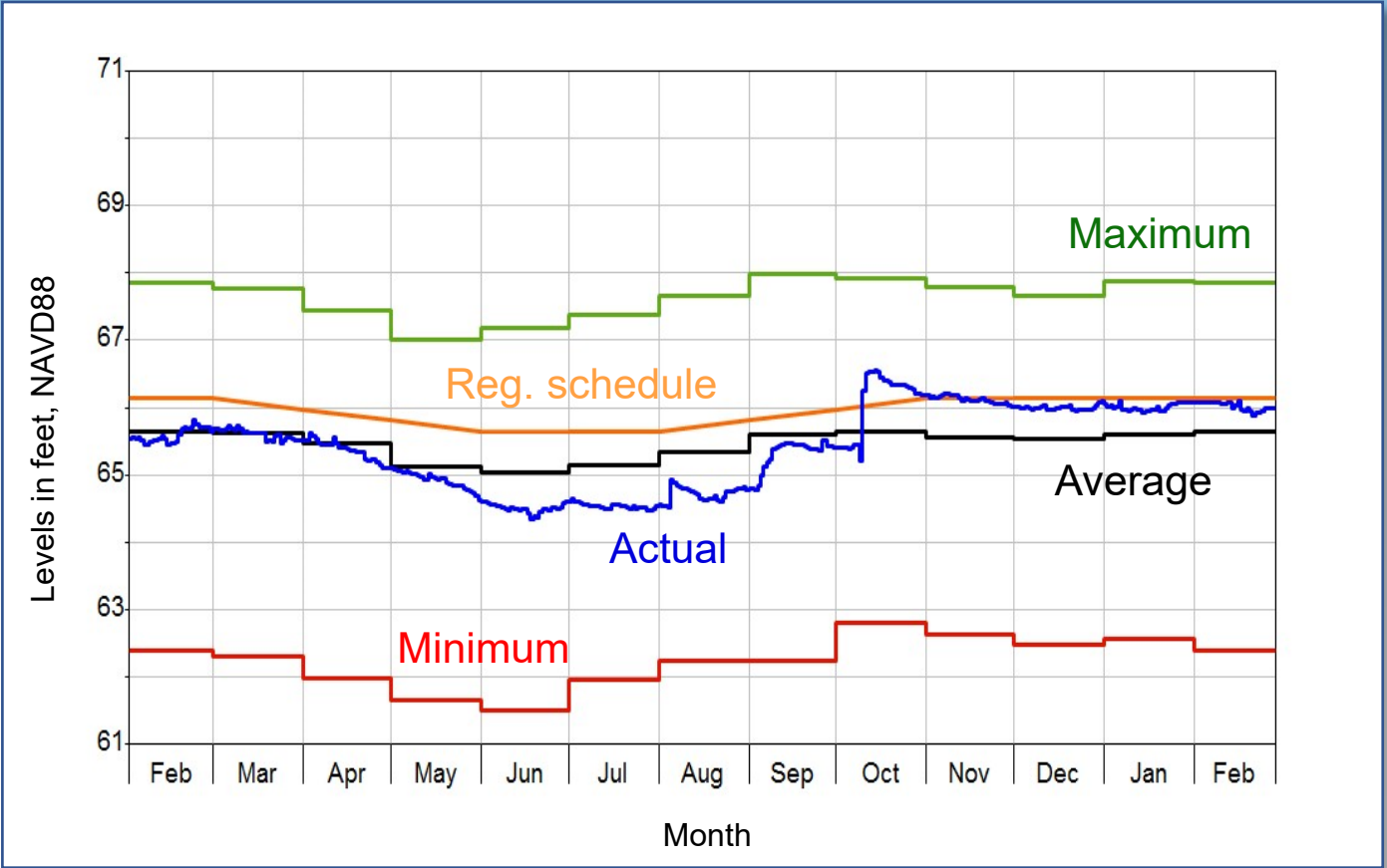
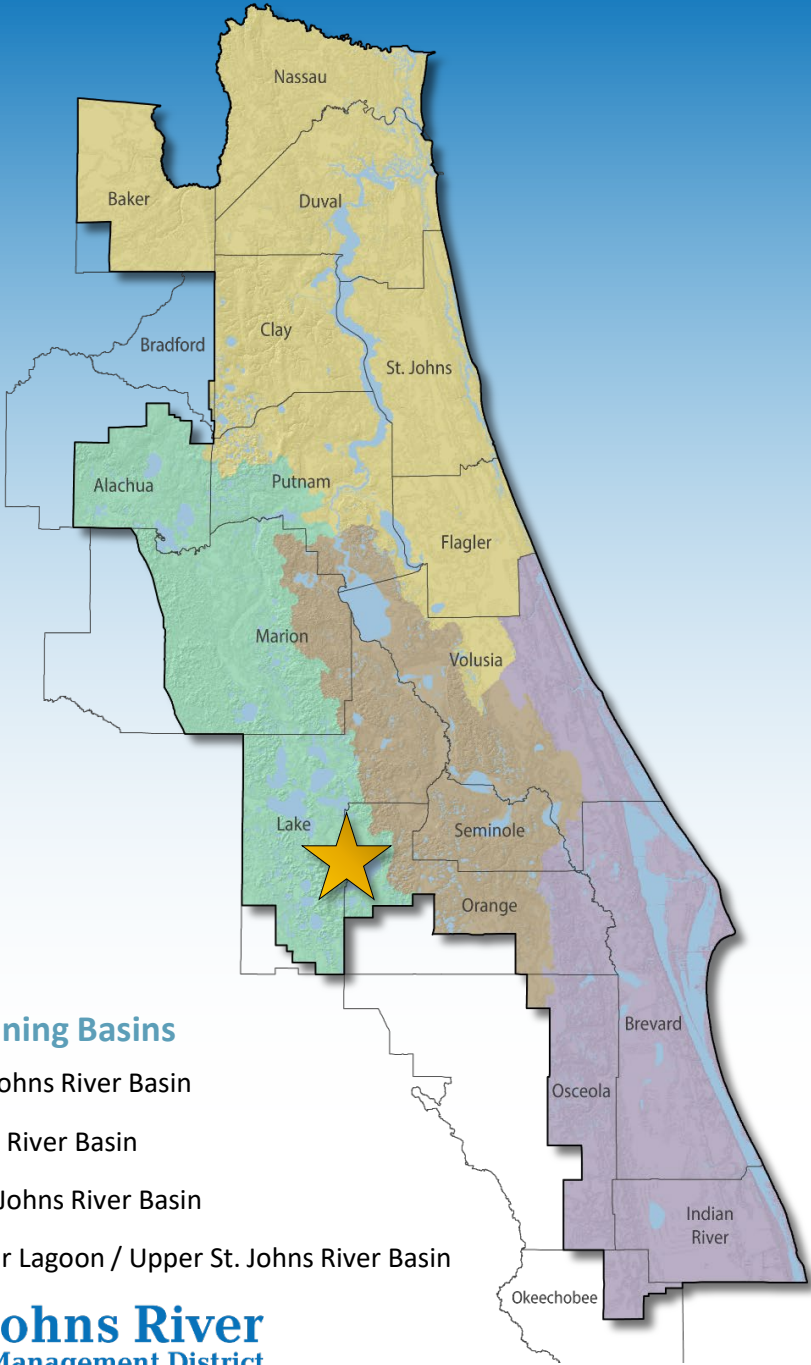


0.3 ft. decrease over previous month

Lake Apopka Levels

February 2025

66.0 feet

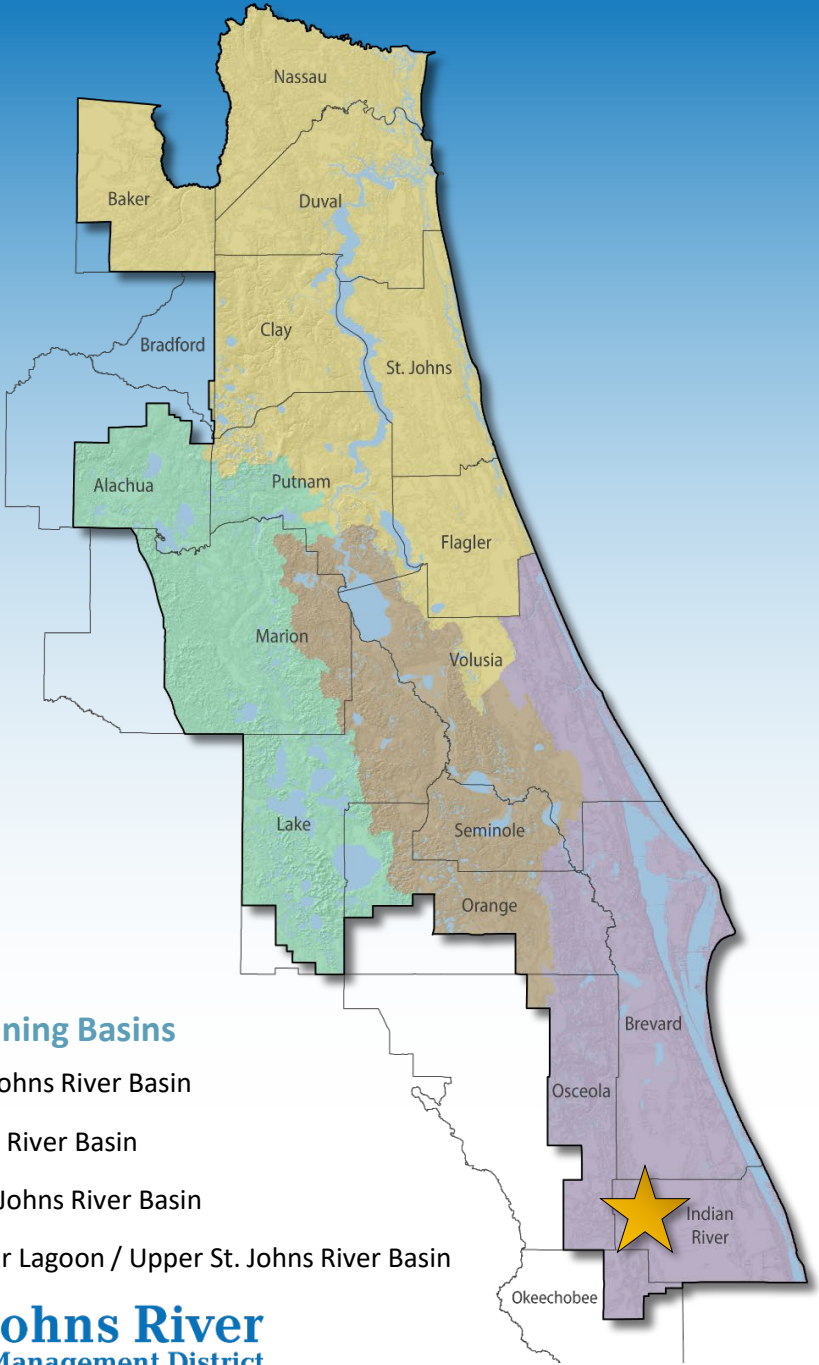


0.1 ft. decrease over previous month

Blue Cypress Lake Levels

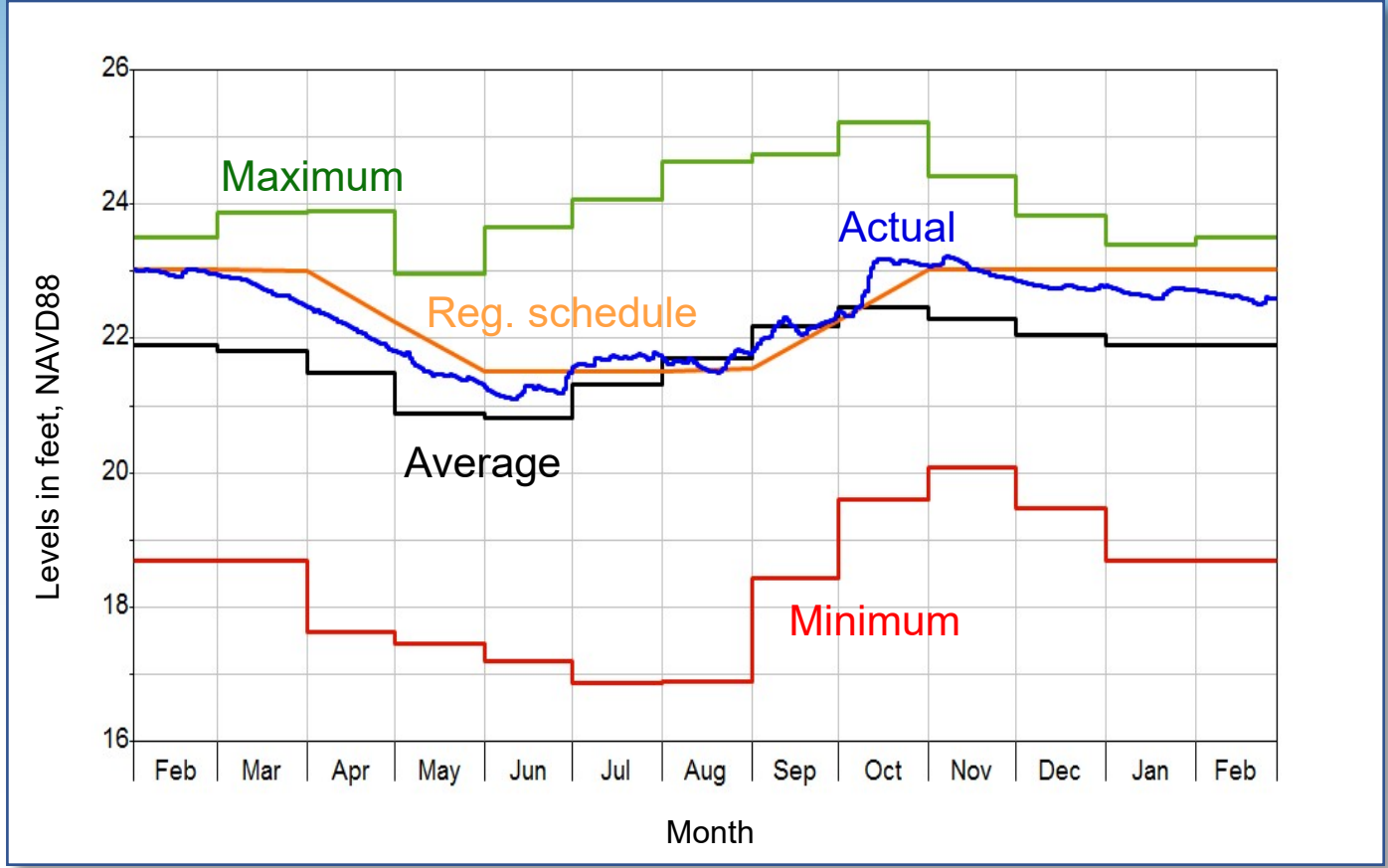
February 2025

22.6 feet



Strategic Planning Basins

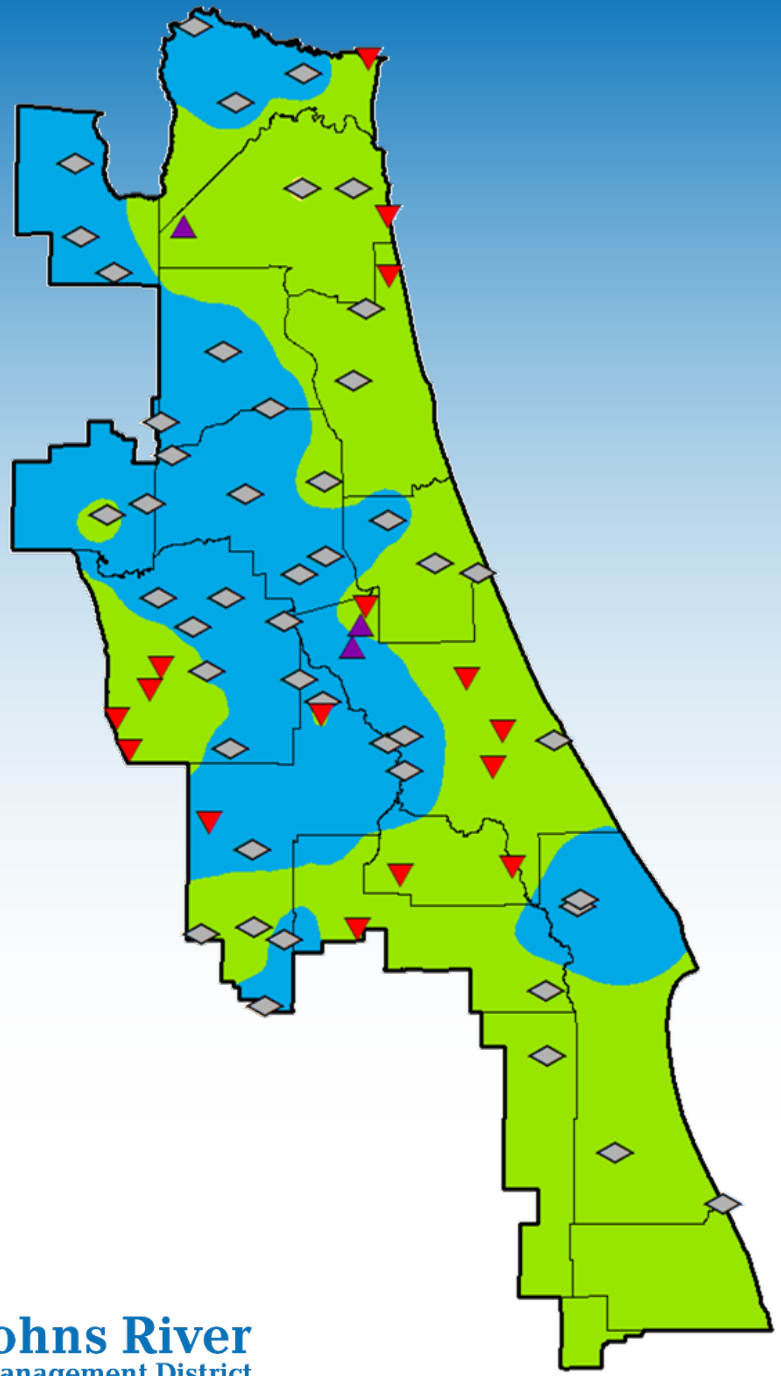
- Lower St. Johns River Basin
- Ocklawaha River Basin
- Middle St. Johns River Basin
- Indian River Lagoon / Upper St. Johns River Basin



0.1 ft. decrease over previous month

Upper Floridan Aquifer Groundwater Conditions

February 2025

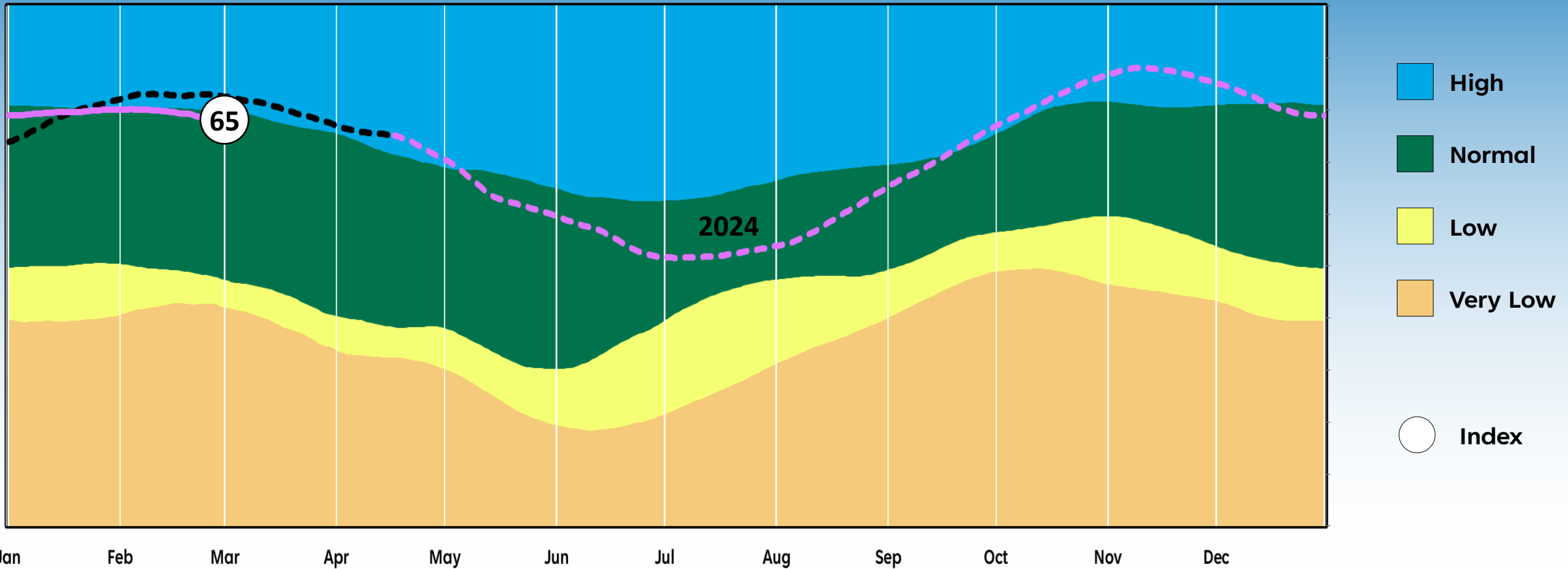


- High
- Normal
- Low
- Very Low

Monthly percentile change in wells

- Increase > 10
- Between +10 and -10
- Decrease > 10

Upper Floridan Aquifer Well Index



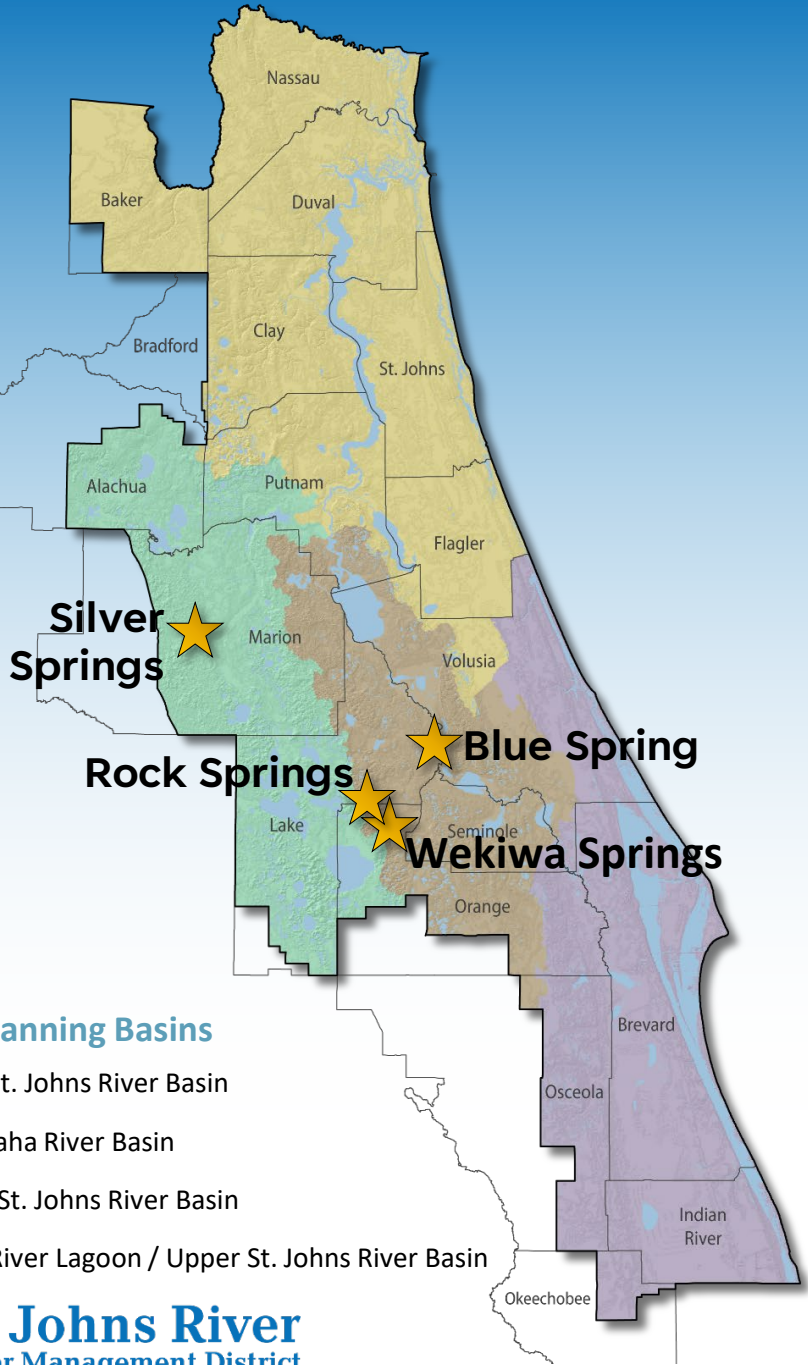
Average daily water level of representative wells:

— 2024 Final data
 - - - 2024 Provisional data
 - - - 2025 Provisional Data

Spring Flows

February 2025

In 4 District springs



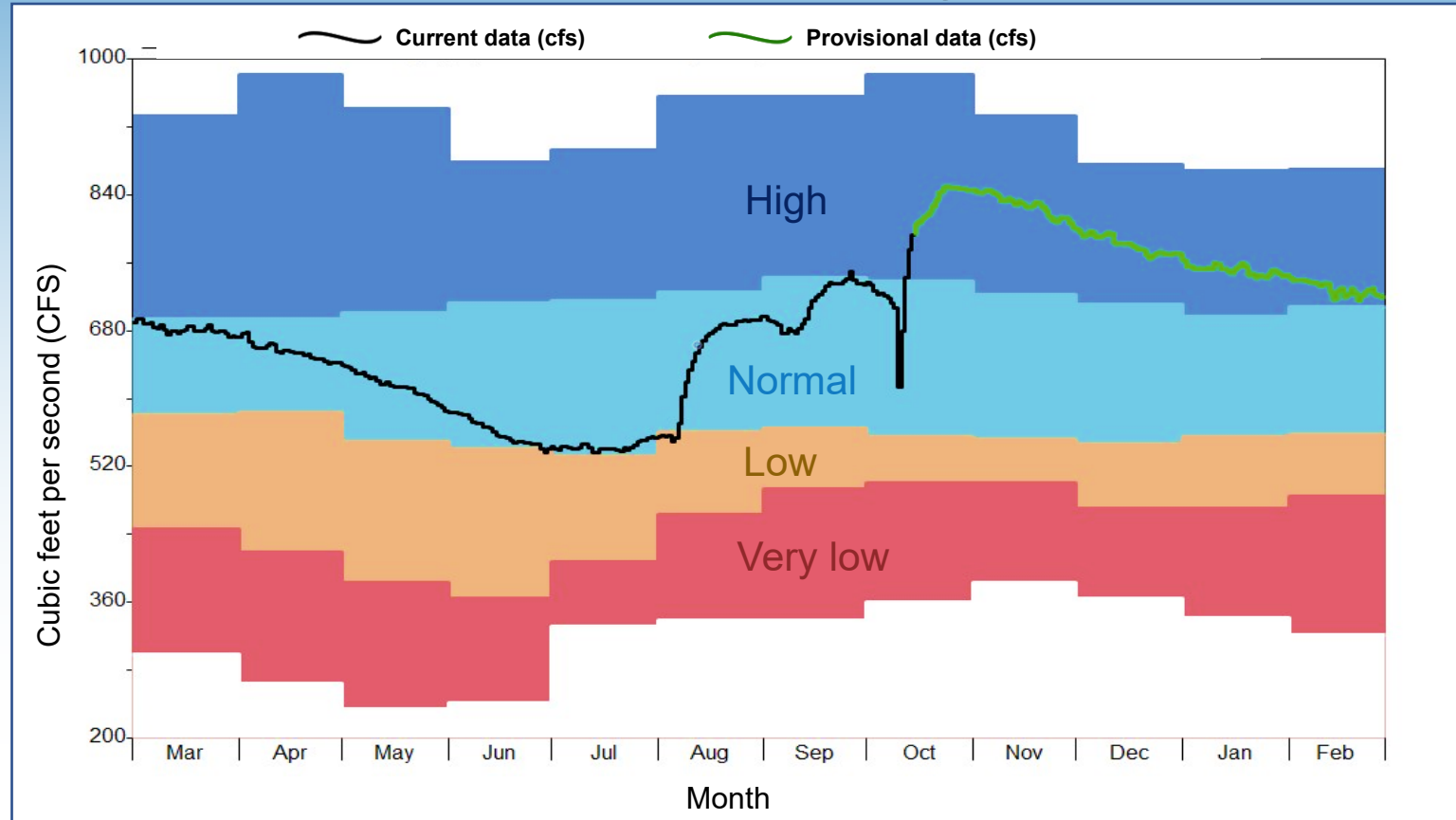
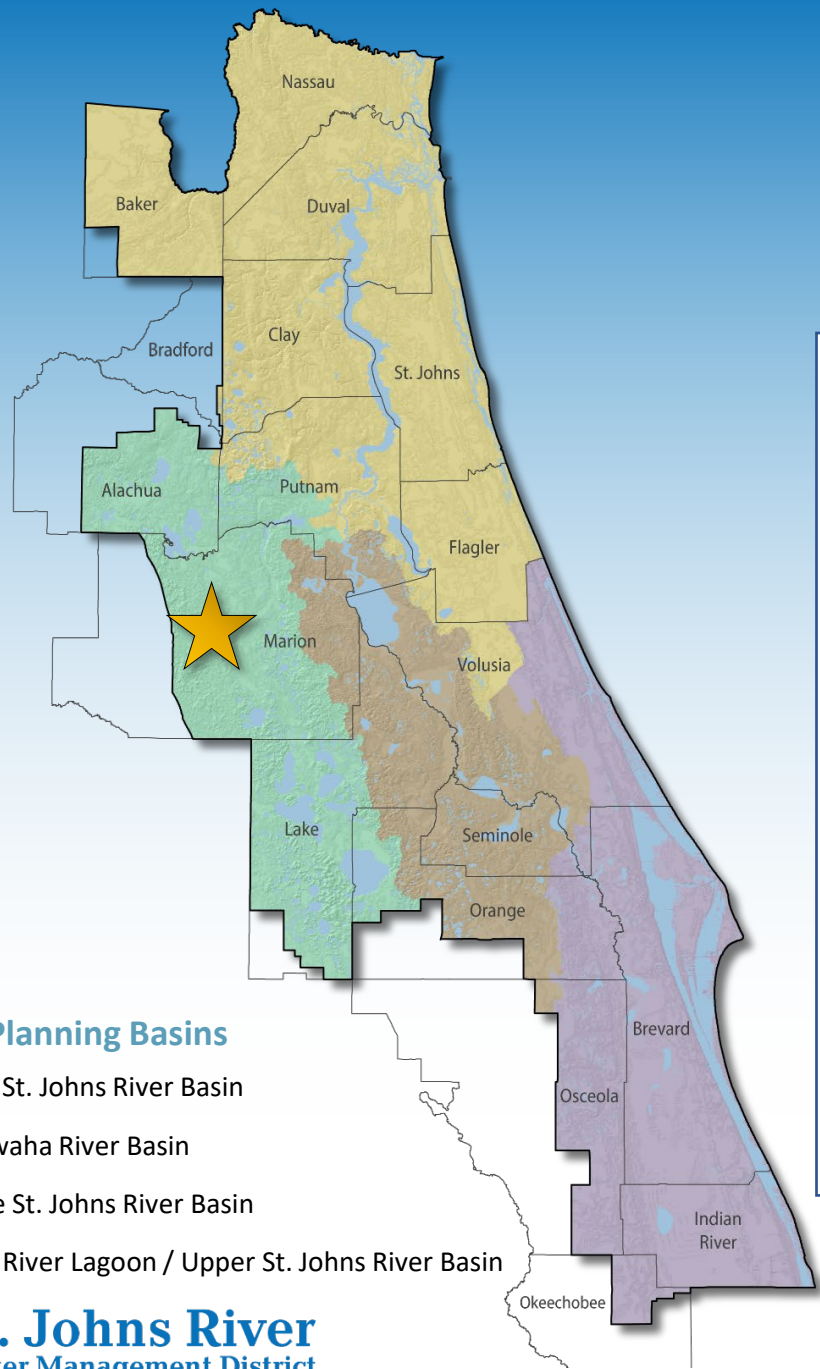
Strategic Planning Basins

- Lower St. Johns River Basin
- Ocklawaha River Basin
- Middle St. Johns River Basin
- Indian River Lagoon / Upper St. Johns River Basin

Silver Springs Flows

Monthly mean, February 2025

729 CFS (471 mgd)

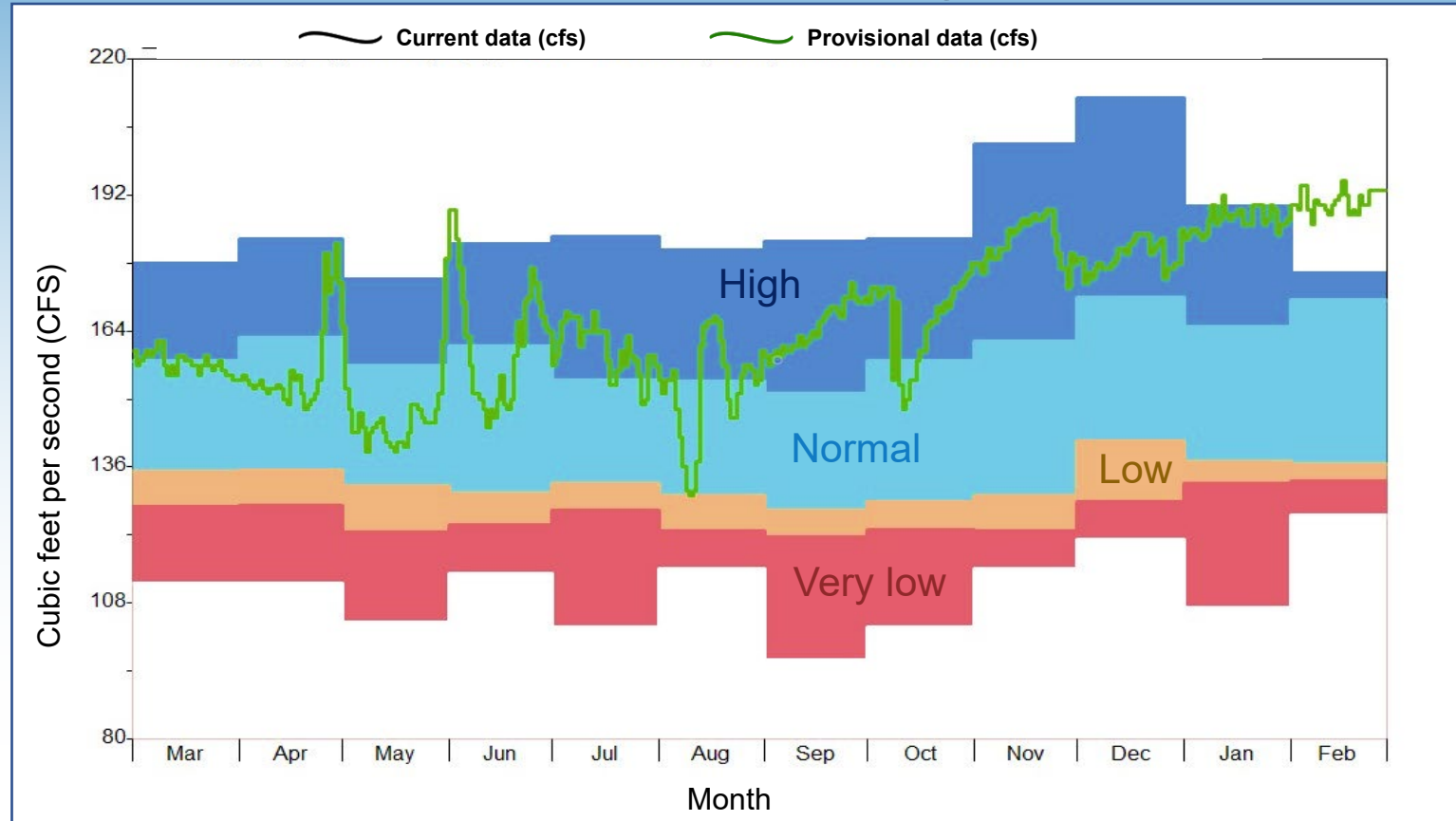
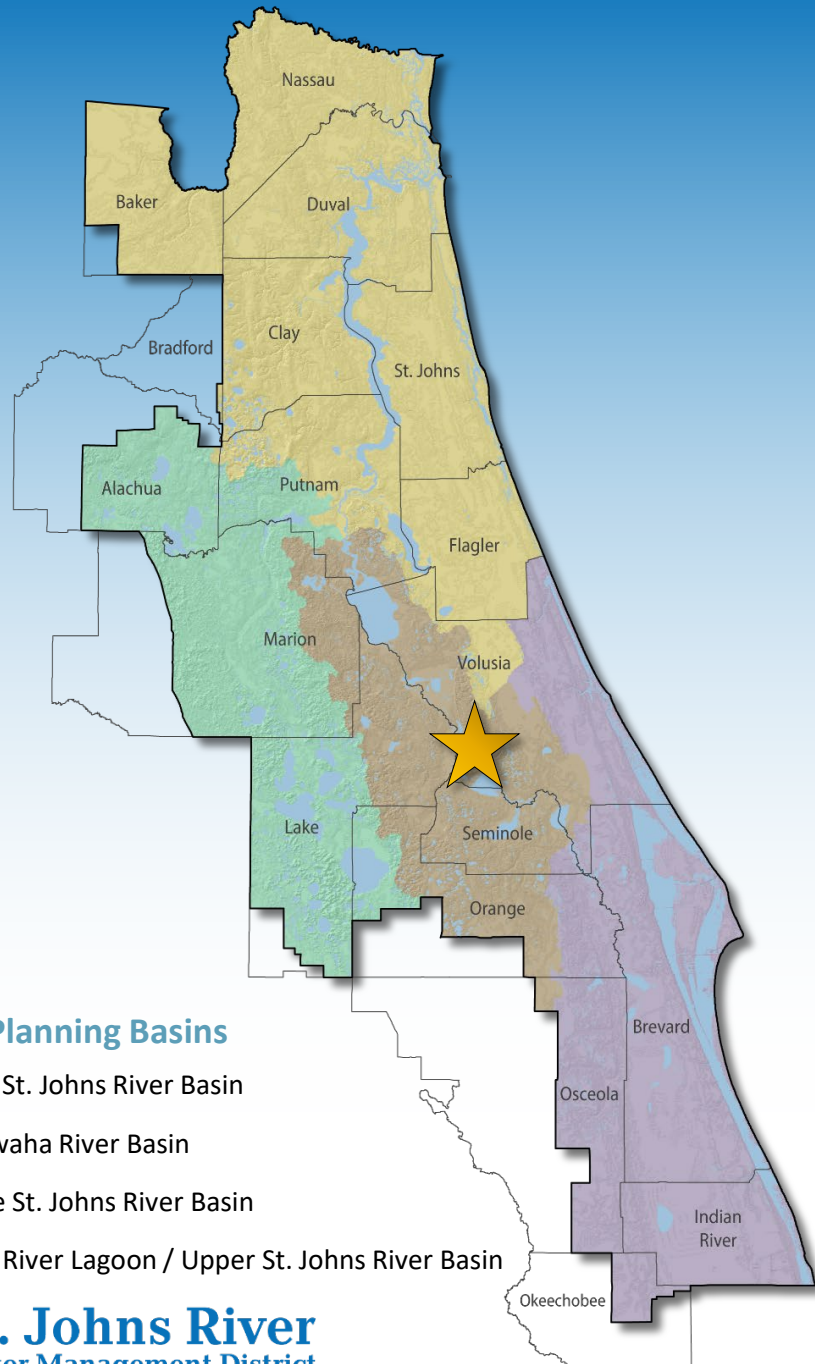


22 CFS decrease from previous monthly mean

Blue Spring Flows

Monthly mean, February 2025

191 CFS (123 mgd)

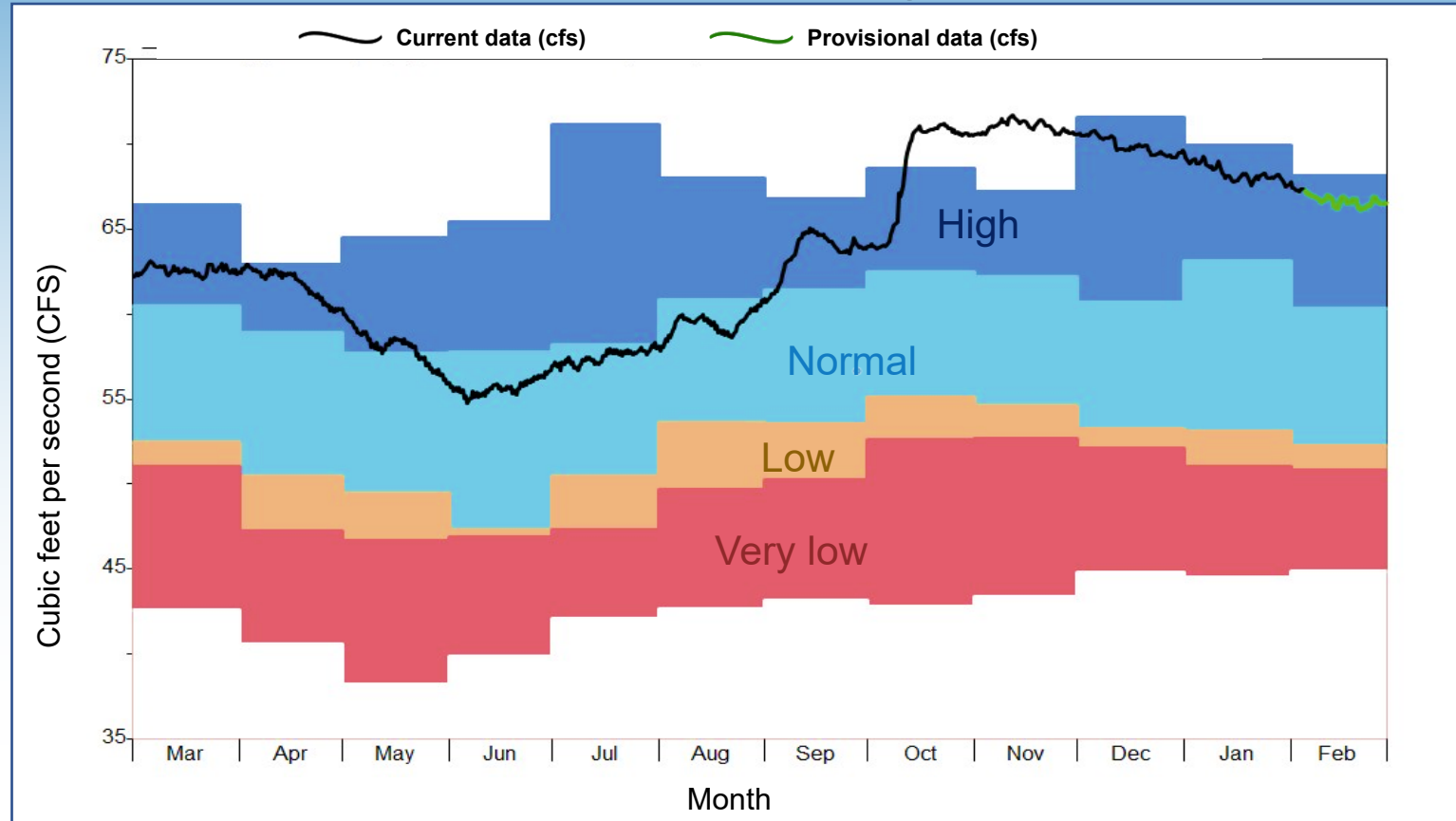
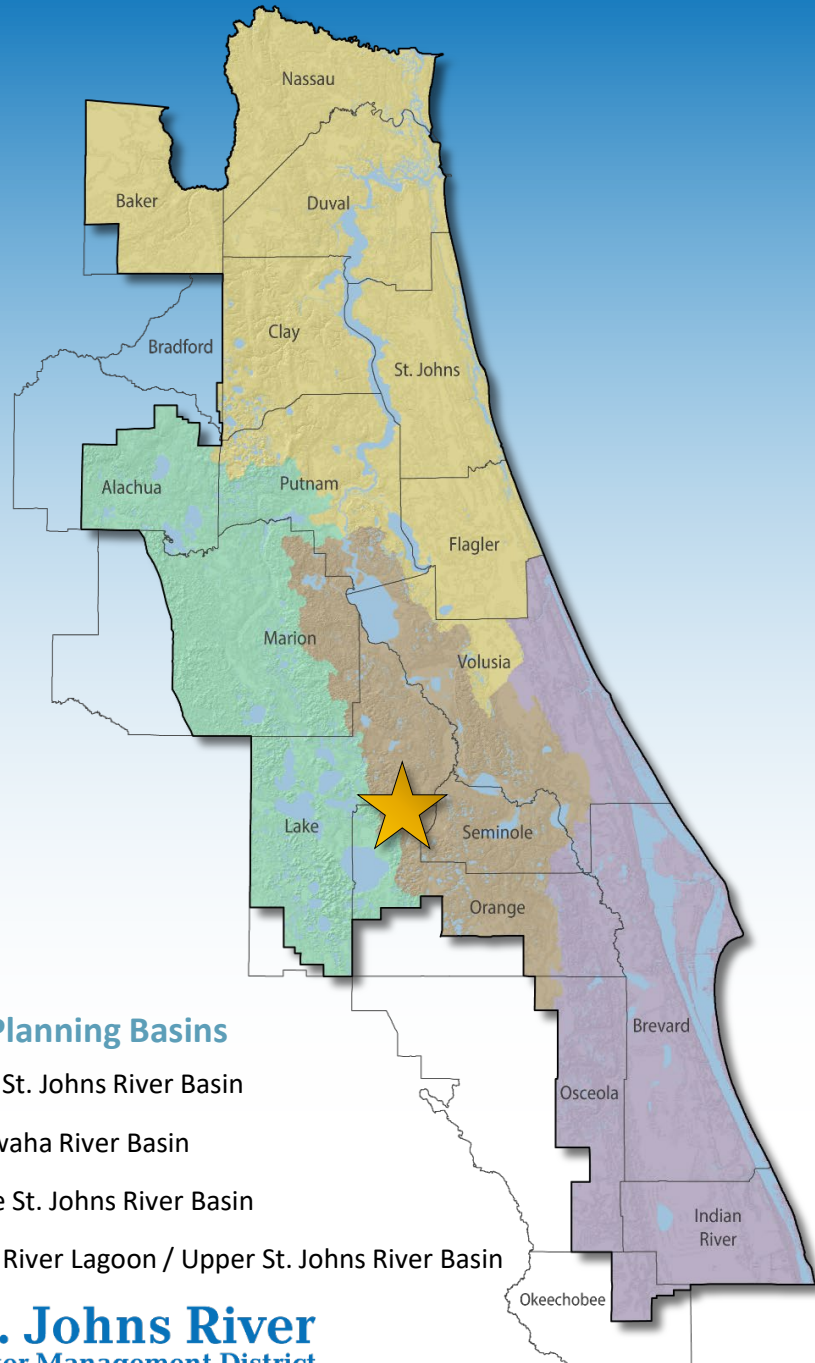


4 CFS increase from previous monthly mean

Rock Springs Flows

Monthly mean, February 2025

67 CFS (43 mgd)

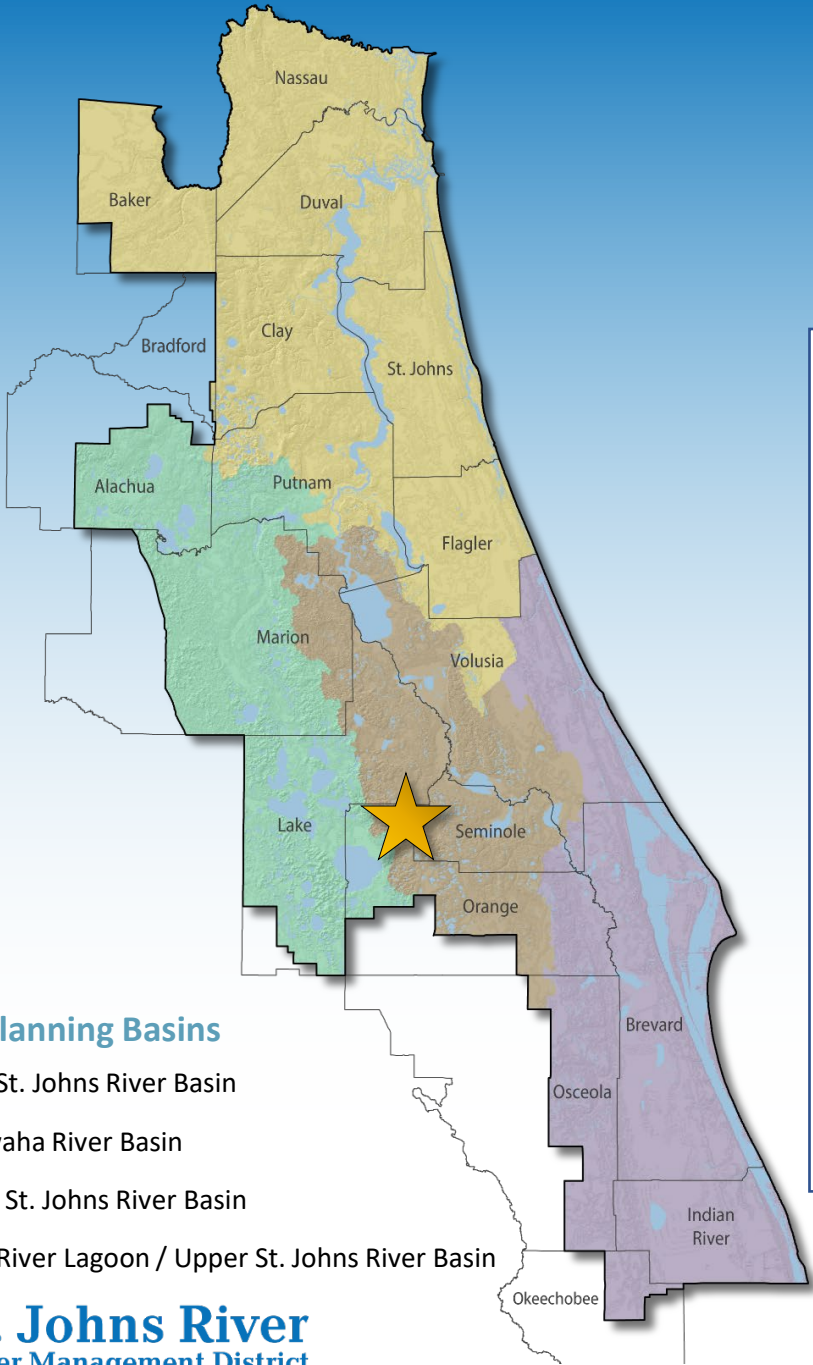


2 CFS decrease from previous monthly mean

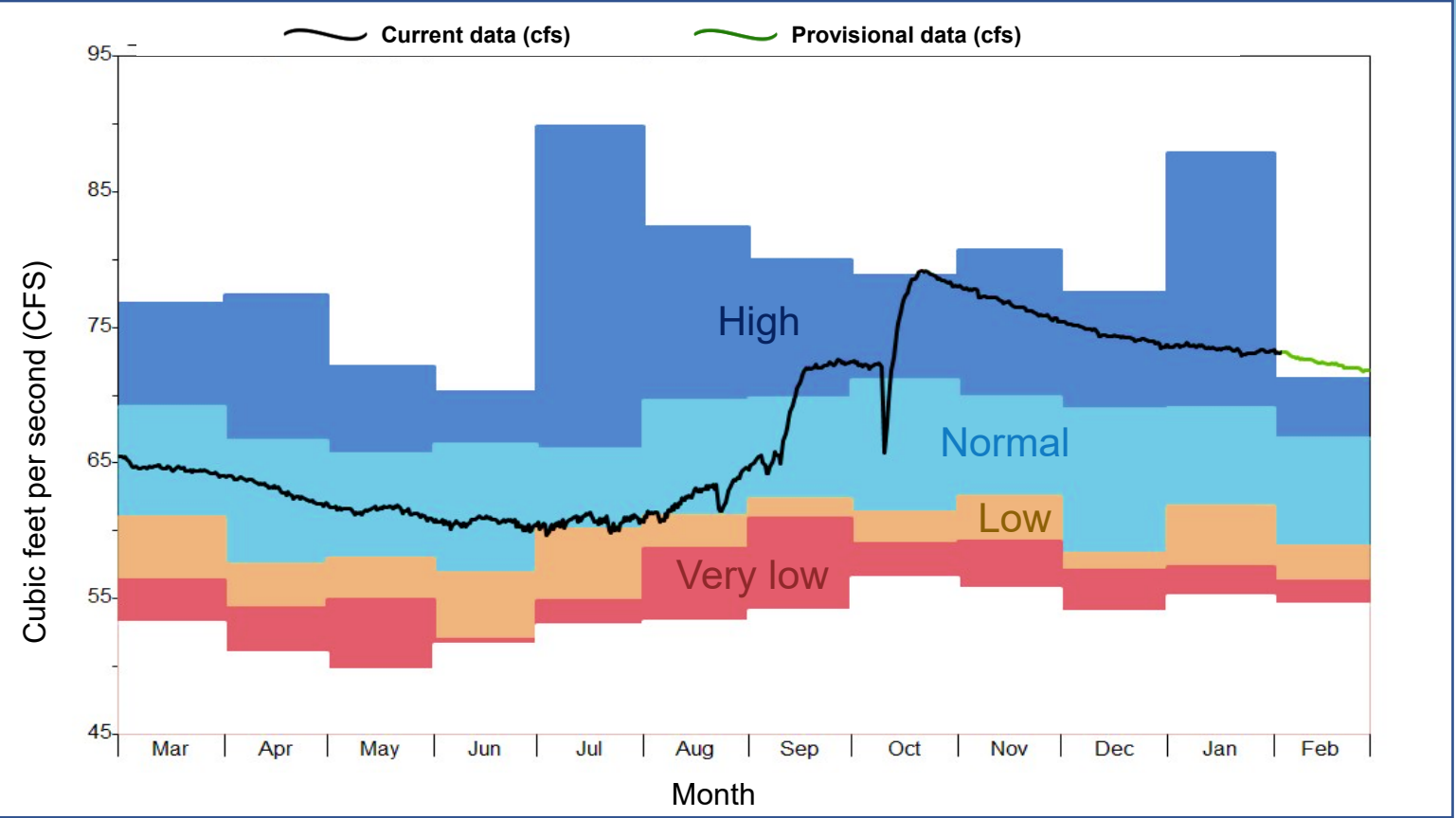
Wekiwa Springs Flows

Monthly mean, February 2025

72 CFS (47 mgd)

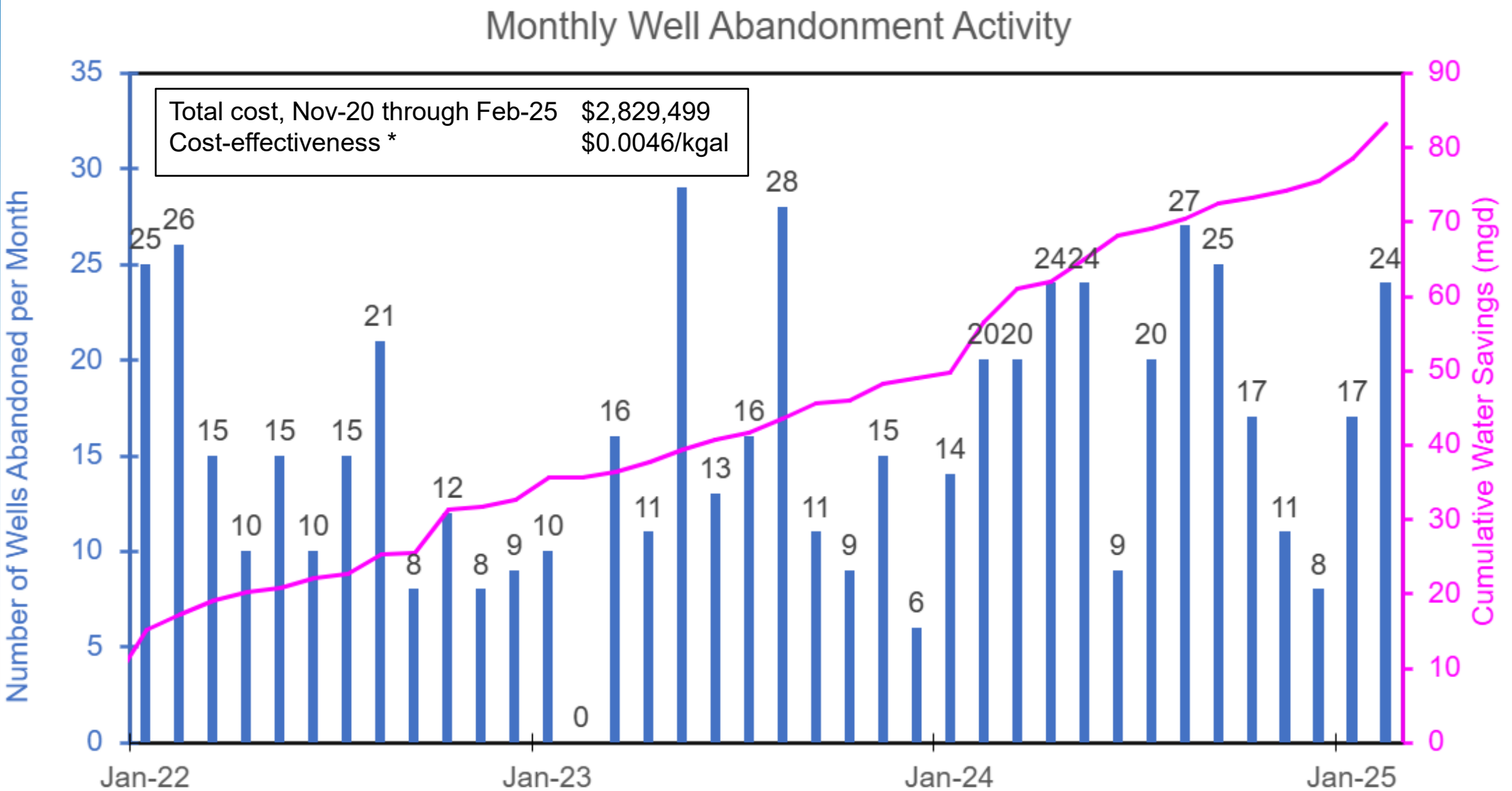


- Strategic Planning Basins**
- Lower St. Johns River Basin
 - Ocklawaha River Basin
 - Middle St. Johns River Basin
 - Indian River Lagoon / Upper St. Johns River Basin



1 CFS decrease from previous monthly mean

Abandoned Artesian Well Plugging Program Update



* Cost-effectiveness is calculated over a 20-year time period.