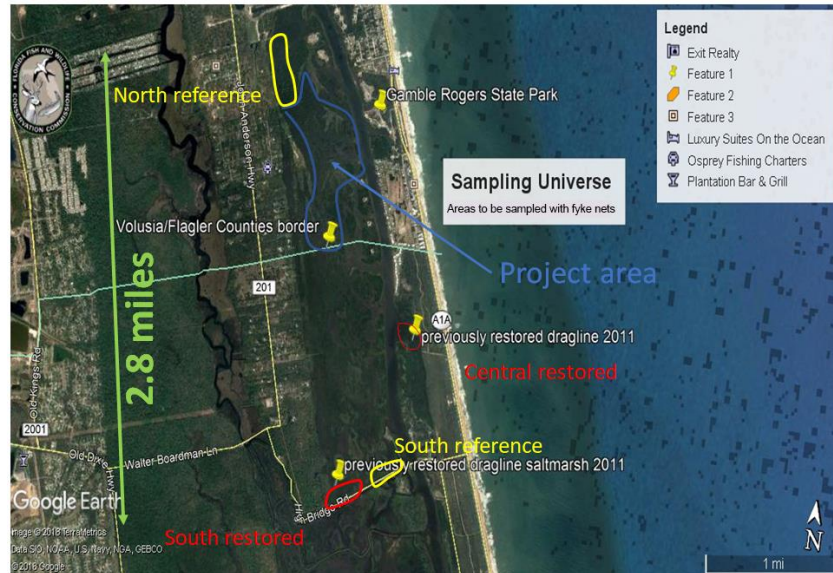


## Monitoring of fish and crustaceans

Sampling is undertaken in four types of areas (illustrated in the map below): 1) salt marsh with mosquito ditches to the north and south of the area being restored (reference areas), 2) saltmarsh that had mosquito ditches and was restored in 2011 (restored areas), 3) salt marsh in the area of the Flagler Beach project before it is restored, and 4) salt marsh in the area of the Flagler Beach project after it is restored.



Sampling design for monitoring fish and crustaceans.

Sampling occurs during either a full or a new moon. Barriers for fyke nets are set the day before sampling (illustrated below). The nets are set when high tide is slack, and they fish for five (5) hours during the ebbing tide.

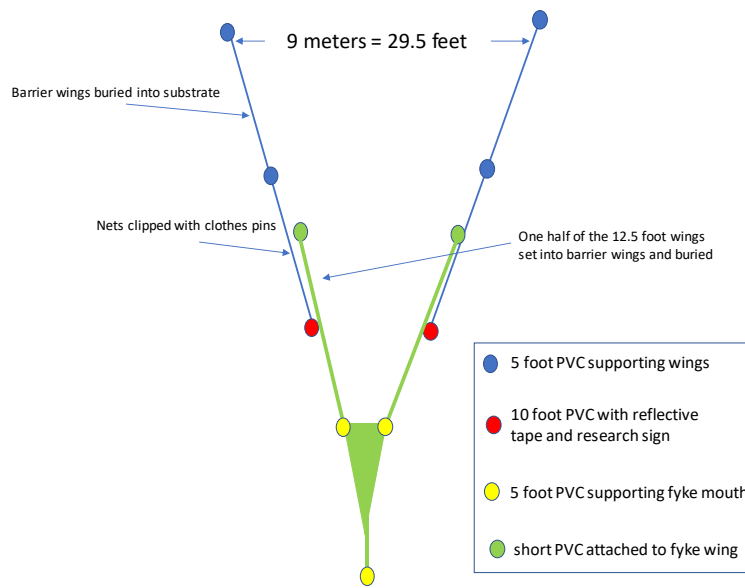


Diagram of fyke net.

Fish and crustaceans found at the Flagler Beach project area to date.

Common name	Scientific Name
anchovy	<i>Anchoa</i> spp.
Atlantic croaker	<i>Micropogonius undulatus</i>
bay whiff	<i>Citharichthys spilopterus</i>
blue crab	<i>Callinectes sapidus</i>
clown goby	<i>Microgobius gulosus</i>
common snook	<i>Centropomus undecimalis</i>
darter goby	<i>Ctenogobius boleosoma</i>
Gulf killifish	<i>Fundulus grandis</i>
hard head catfish	<i>Ariopsis felis</i>
Harris mud crab	<i>Rhithropanopeus harrisii</i>
high fin goby	<i>Gobionellus oceanicus</i>
Irish mojarra	<i>Diapterus auratus</i>
ladyfish	<i>Elops saurus</i>
menhaden	<i>Brevoortia</i> spp.
mojarra	<i>Eucinostomus</i> spp.
mosquito fish	<i>Gambusia holbrooki</i>
mullet	<i>Mugil</i> spp.
mummichog	<i>Fundulus heteroclitus</i>
naked goby	<i>Gobiosoma bosc</i>
pinfish	<i>Lagodon rhomboides</i>
rainwater killifish	<i>Lucania parva</i>
red spotted shrimp	<i>Farfantepenaeus brasiliensis</i>
rough silverside	<i>Membras martinica</i>
sailfin molly	<i>Poecilia latipinna</i>
scaled herring	<i>Harengula jaguana</i>
silverside	<i>Menidia</i> spp.
spot	<i>Leiostomus xanthurus</i>
striped mullet	<i>Mugil cephalus</i>
tidewater mojarra	<i>Eucinostomus harengulus</i>