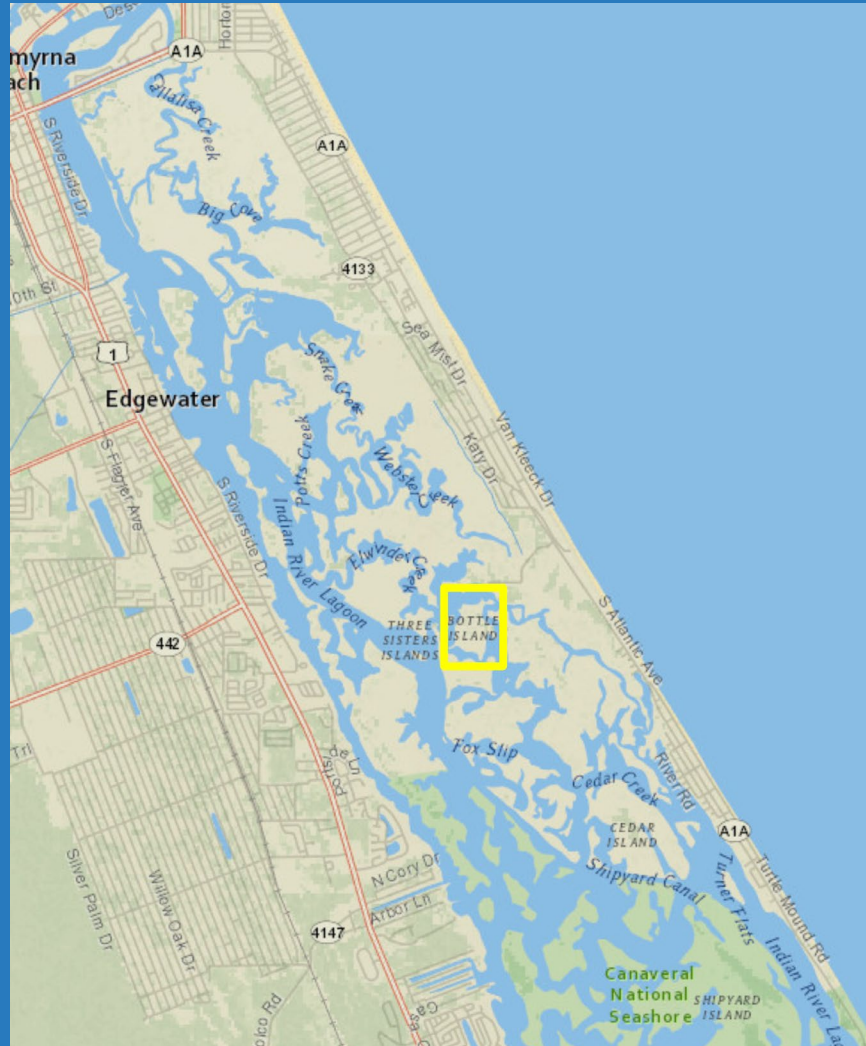


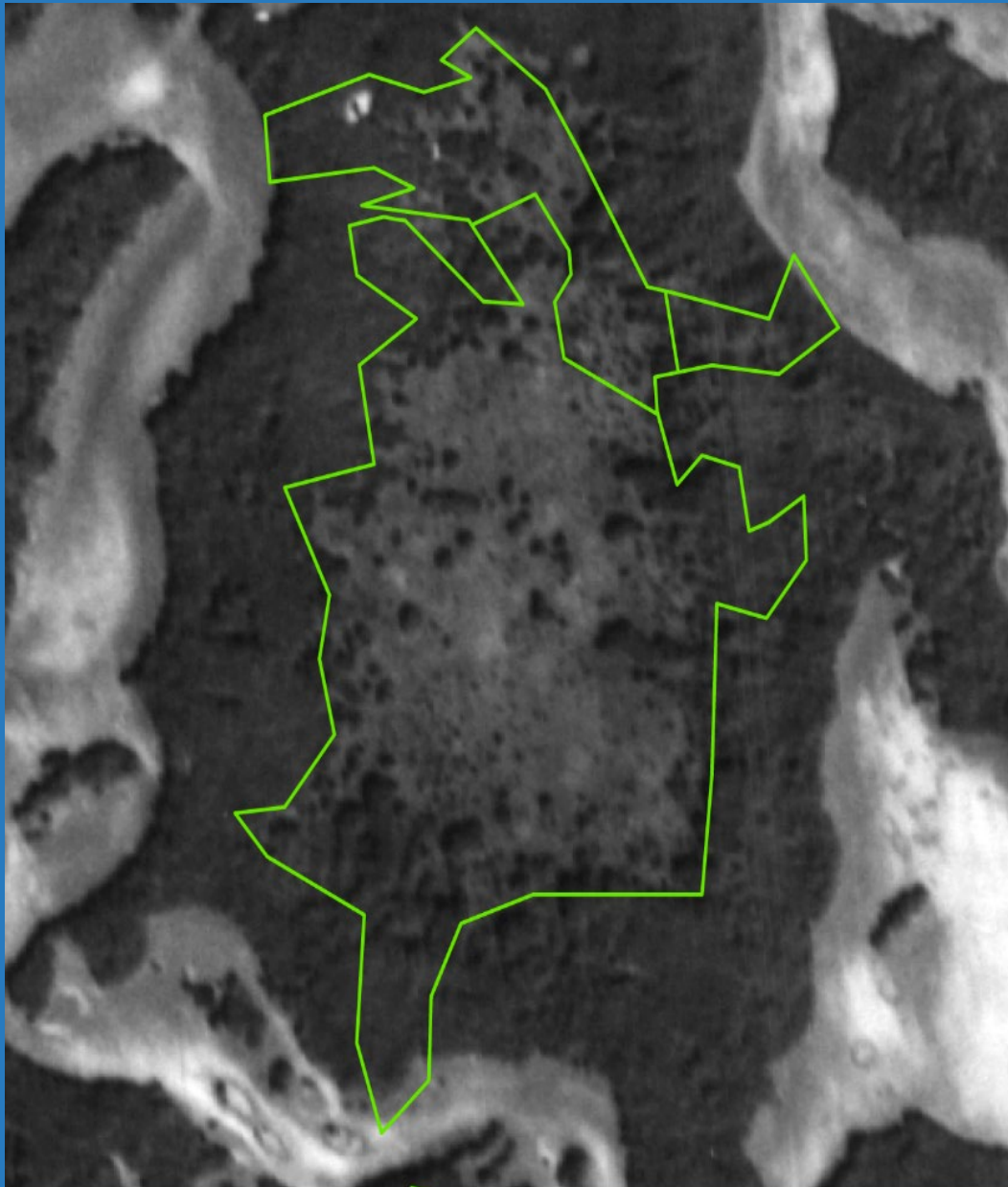
Dragline Ditch Restoration Sites in Volusia County

The following images and video depict the “before, during and after” for dragline ditch-impacted areas in Mosquito Lagoon and North Peninsula State Park.

Bottle Islands

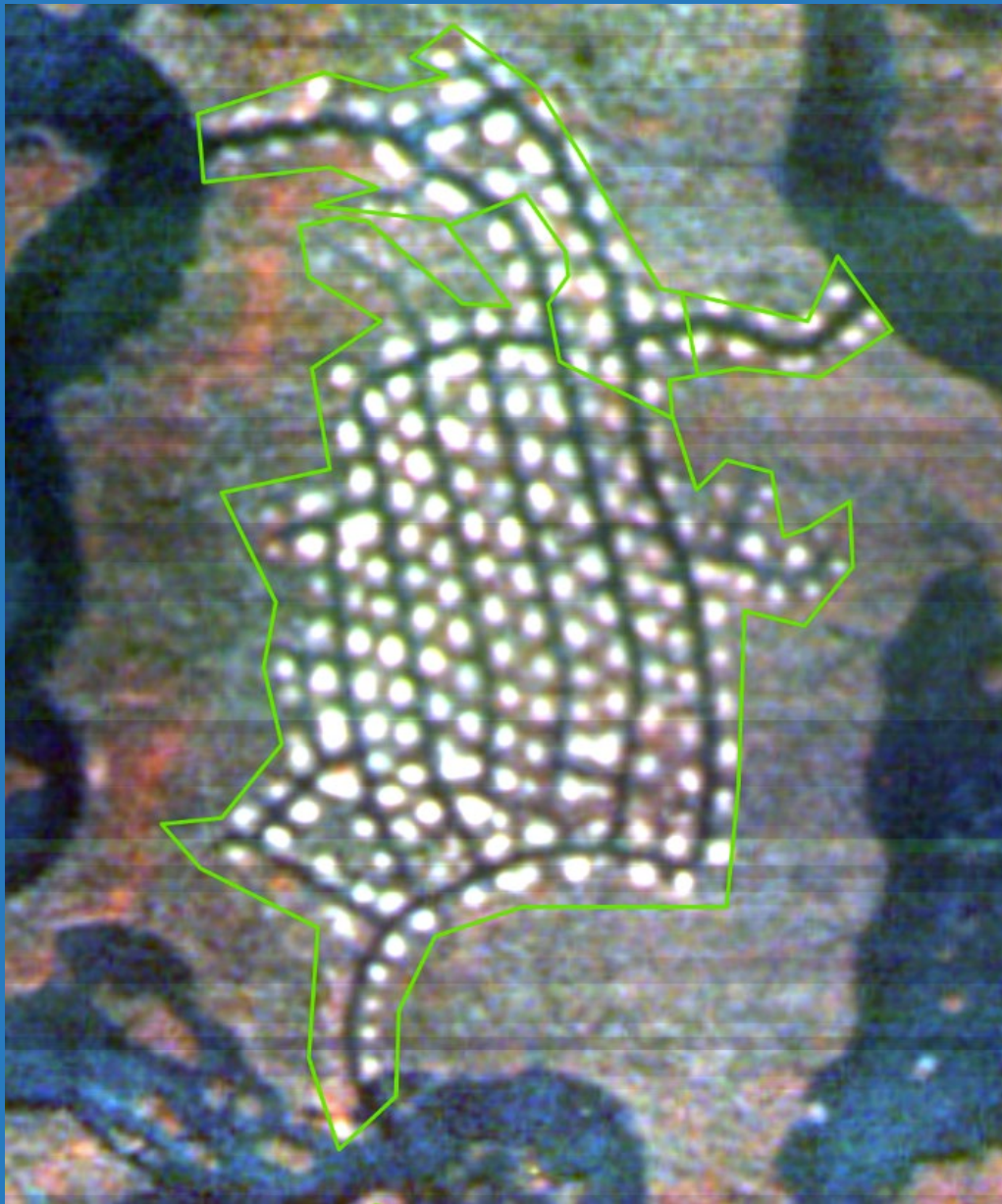
Volusia County





This is a 1943 aerial image of the northernmost member of the Bottle Islands, which are located in the north central portion of Mosquito Lagoon in Volusia County.

North Bottle Island was impacted by 19 acres of dragline ditch (within the green lines), and restoration was completed in 2009.



This is a 1984 aerial image of North Bottle Island.

Notice the distinct spoil piles (in white) throughout the island.



This is a 2004 aerial image of North Bottle Island.

Less of the spoil piles are visible as vegetation expands.



This is a 2008 aerial image of North Bottle Island.

Notice the restoration work in progress in the upper portion of the island.



This is a 2014 aerial image of North Bottle Island that depicts approximately five years of recovery.

Notice the dense vegetation, including mangroves, on each of the former spoil piles.

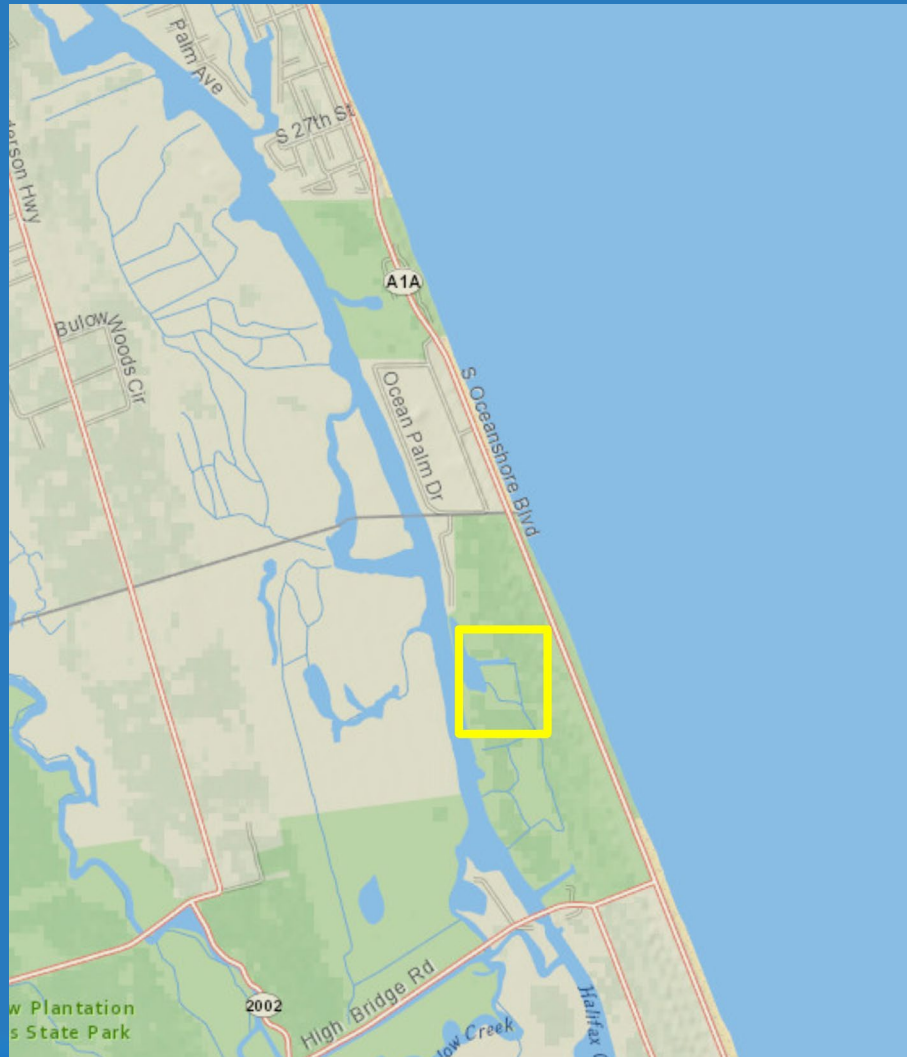


This is an aerial image taken in 2017, approximately eight years after restoration was completed.

Notice the well-defined vegetation of the restored wetlands.

North Peninsula State Park

Volusia County





This is an aerial image taken in 2009 of dragline ditch impacts in North Peninsula State Park.

Restoration on these 10 acres began in 2010 (highlighted in blue).

In addition, there were over 90 acres of dredge spoil-impacted wetlands restored in this area. This work required trucking out large quantities of spoil; this process is not part of the proposed work at the Flagler County site.



This is a 2012 aerial image of the area, approximately two years after the restoration project was completed.



This is a 2014-2015 aerial image showing the well-defined vegetation in the restored area.

Video: Oct. 5, 2018, boat tour of areas restored at North Peninsula State Park in 2010 (identified in slides 11-13)

Participants: Flagler County Commissioner David Sullivan (seated, in Flagler County 100 hat), SJRWMD environmental scientist Ron Brockmeyer (seated), SJRWMD Intergovernmental Coordinator Jim Troiano and contract ecologist Chris Schlageter (standing).

