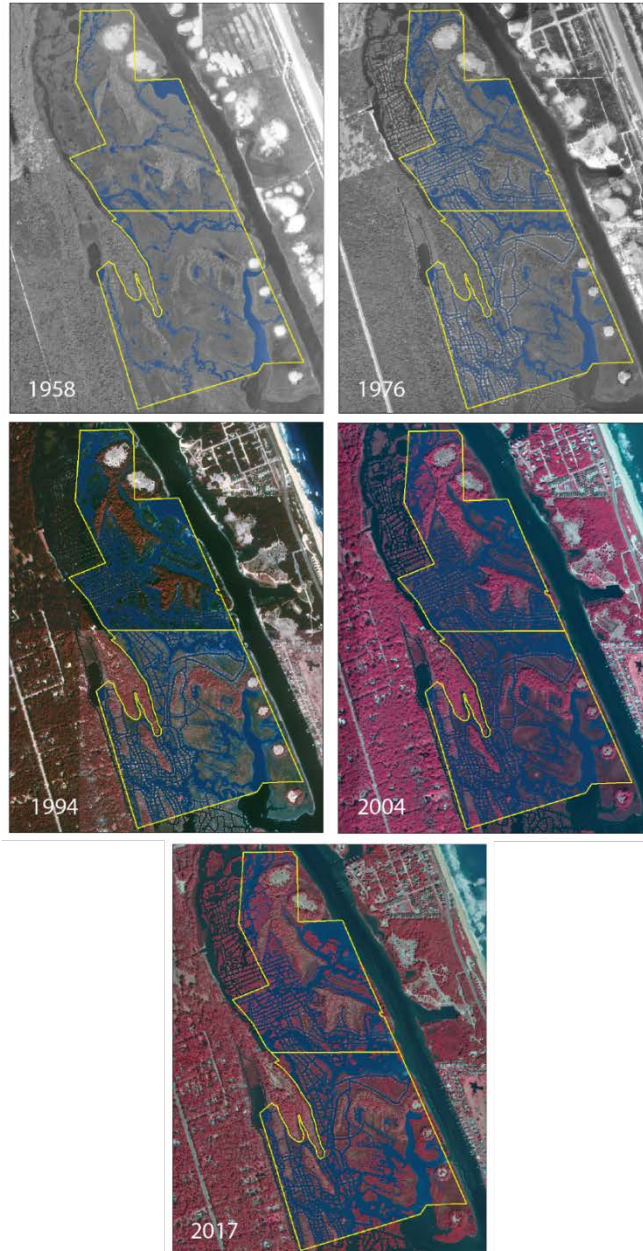
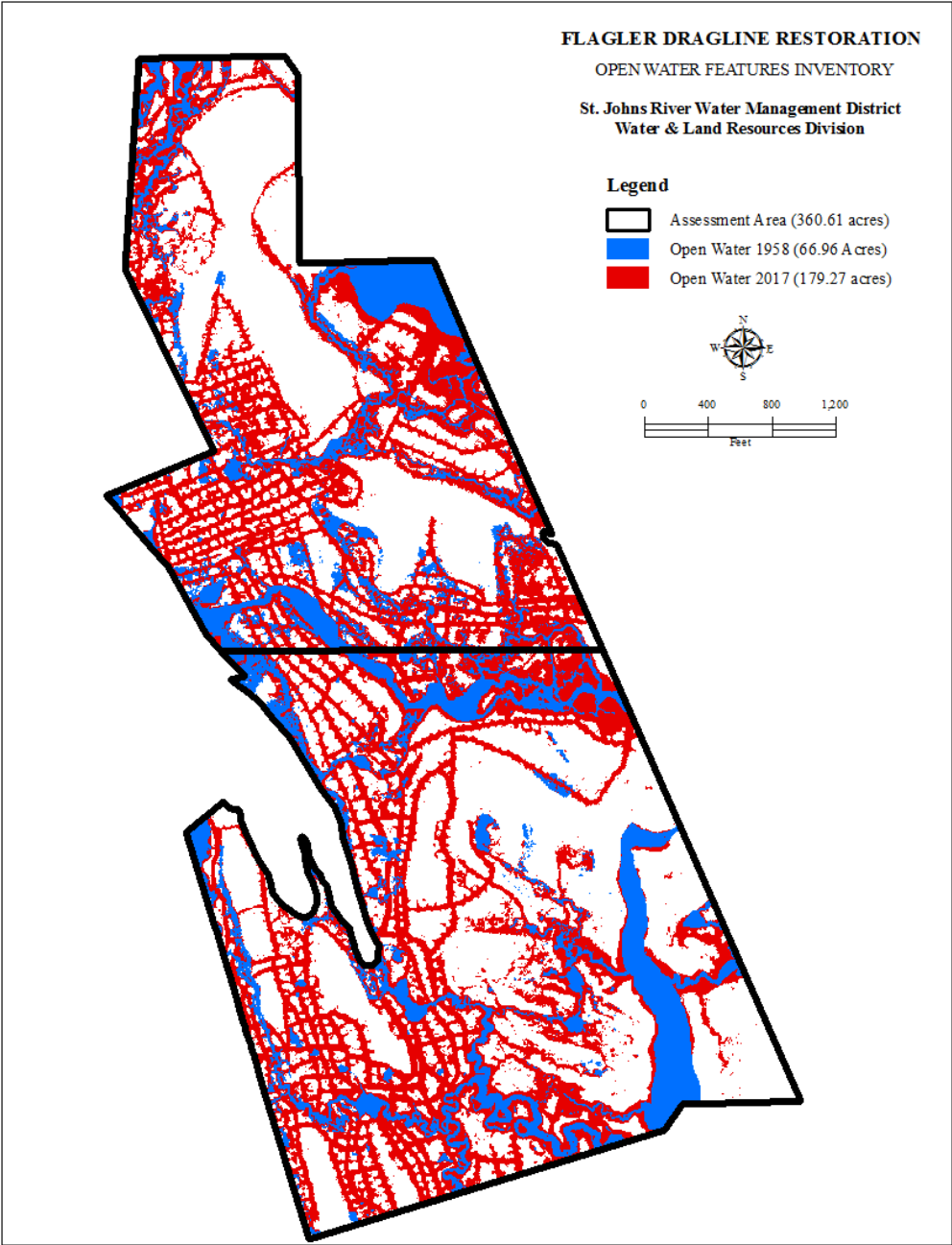


Continued Degradation

The degraded area continues to degrade, with degradation defined as loss of highly productive saltmarsh. The ditching done by draglines between 1960 and 1976 converted approximately 37 acres of saltmarsh to open water, and this degradation has been followed by ongoing loss of approximately one acre of saltmarsh per year (see text and figures below). Since completion of ditching, there has been a loss of over 75 acres of saltmarsh (see second figure below), which translates into hundreds of thousands of dollars of lost services (Barbier, E., et al. 2011. The value of estuarine and ecosystem services. *Ecological Monographs* 81: 169-183). Pushing back against this continued degradation is a key motivation for this project.



Series of aerial photographs showing changes in saltmarsh and open water.



Comparison of open water in 1958 (blue) and 2017 (red).