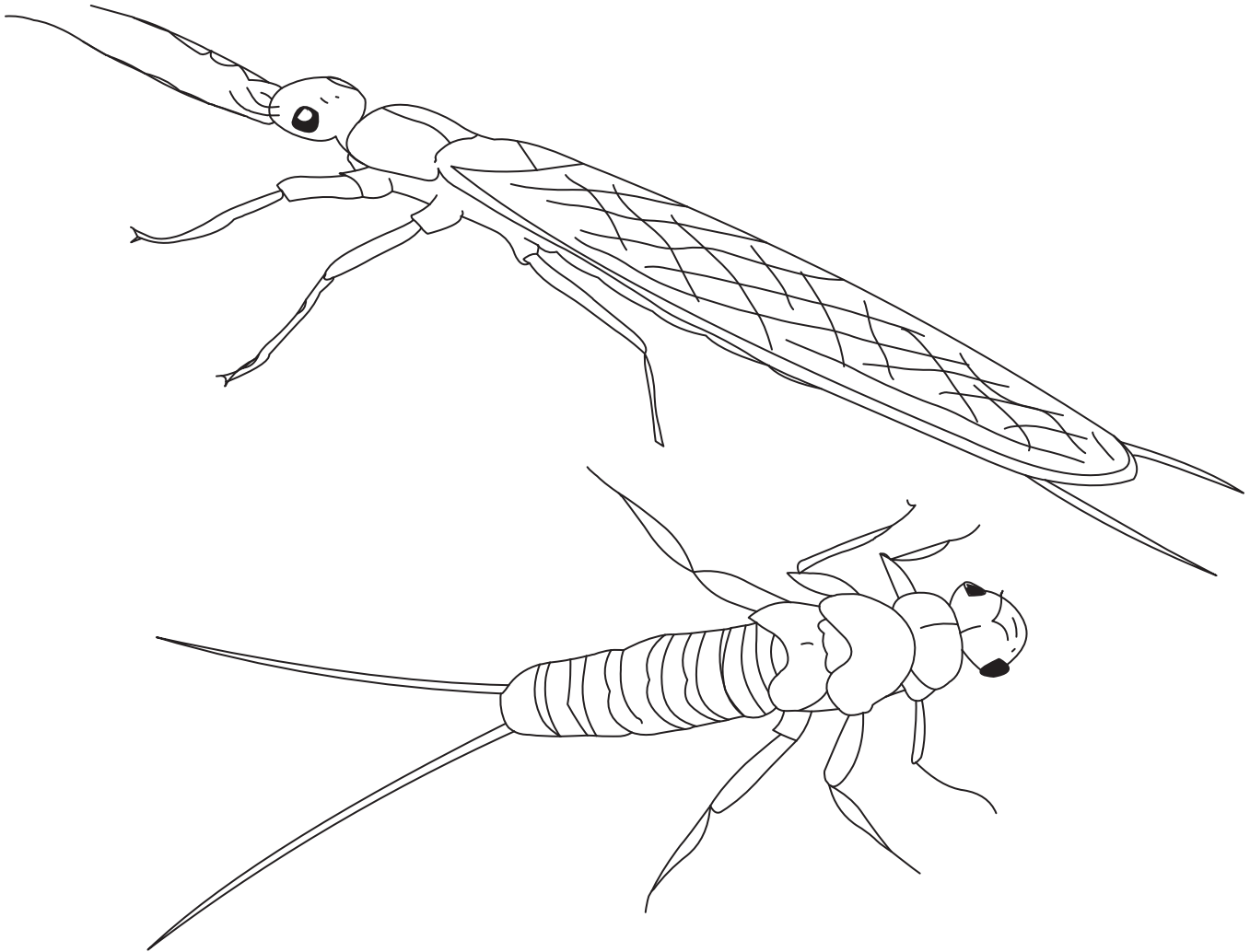




Inside the world of **macros**

Macroinvertebrates are animals without a backbone that you can see without using a microscope or magnifying glass. Macros that live on or in the ground beneath the water are called benthic macros and include snails, mussels, crayfish, worms and leeches. Scientists look for young (nymph or larva) benthic macros to measure water quality. Certain macros can tolerate polluted water, while other types cannot. Healthy waters usually have many different kinds of macros.



Macroinvertebrate (MAC-row-in-VERT-ih-brate)

Macroinvertebrate (MAC-row-in-VERT-ih-brate)

Stoneflies, order Plecoptera, are distinguished by two long thin tails projecting from the rear of the abdomen. The body is somewhat flattened, and there are two claws that extend from the three pairs of segmented legs. Stoneflies are considered crawlers and crawl around looking for food. They cannot live in polluted water.