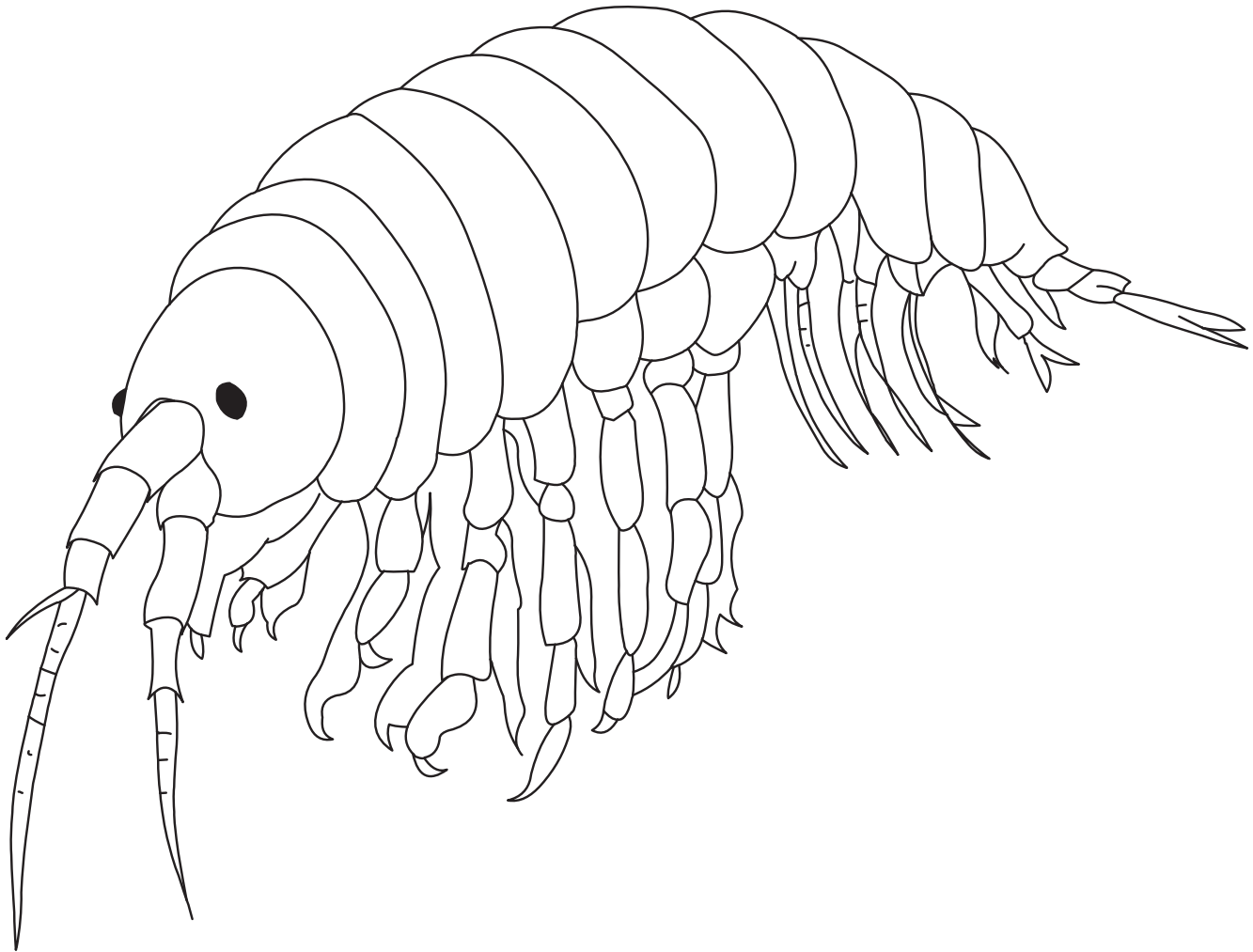




# Inside the world of **macros**

Macroinvertebrates (often called macros) are animals without a backbone that you can see without using a microscope or magnifying glass. Scientists look for aquatic macros as indicators of water quality since some can tolerate polluted water, while other types cannot. Healthy waters usually have many different macros.



Macroinvertebrate (MAC-row-in-VERT-ih-brate)

Macroinvertebrate (MAC-row-in-VERT-ih-brate)

**Scuds**, order Amphipoda, are common shrimp-like animals often found feeding on detritus (decaying plant material) at the base of aquatic plants such as cattails. They are very tiny and hard to see, and move quickly through the water, making them hard to catch. They tend to be abundant in small habitats without fish. They are partially tolerant of degraded water quality.