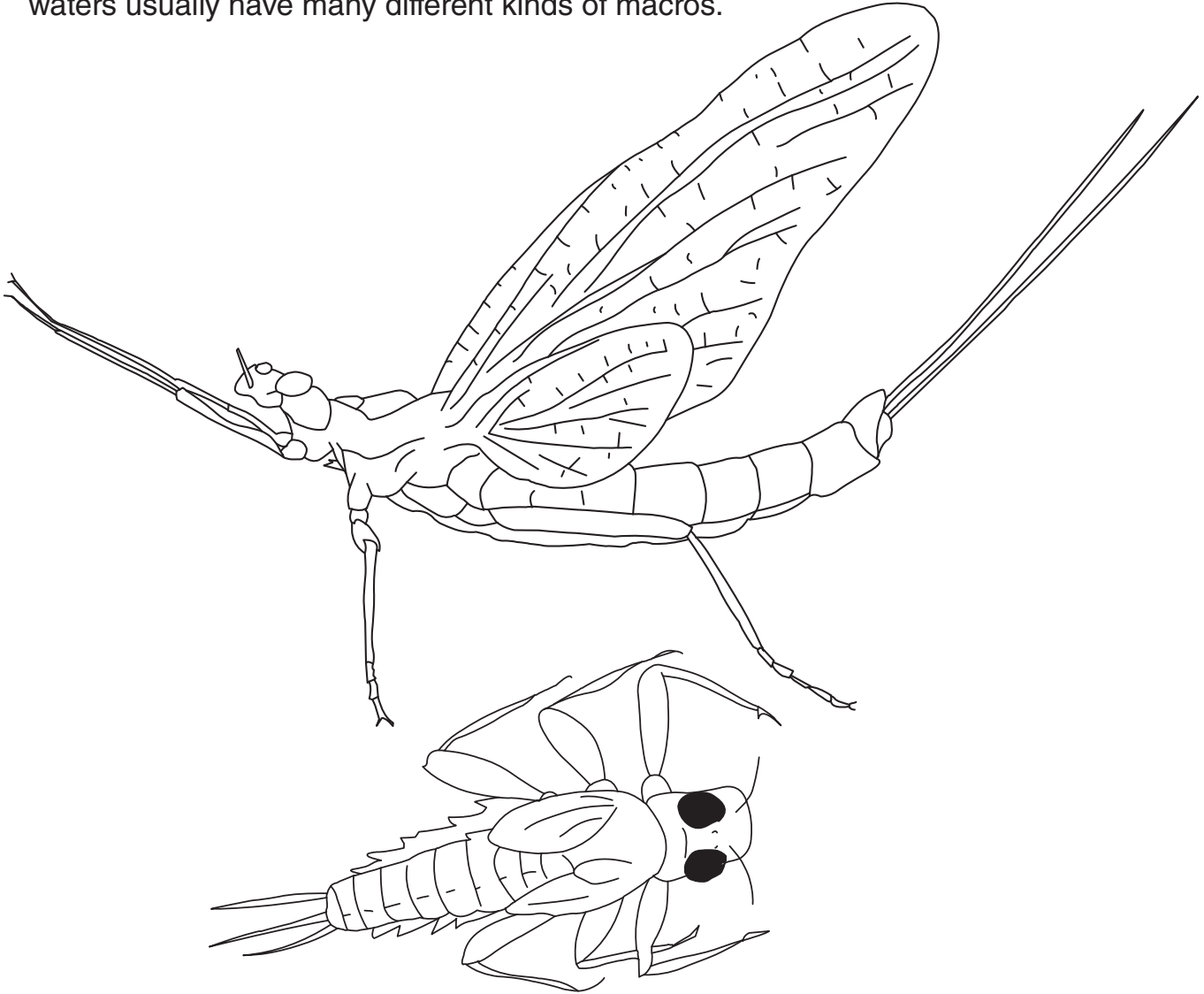




Inside the world of **macros**

Macroinvertebrates are animals without a backbone that you can see without using a microscope or magnifying glass. Macros that live on or in the ground beneath the water are called benthic macros and include snails, mussels, crayfish, worms and leeches. Scientists look for young (nymph or larva) benthic macros to measure water quality. Certain macros can tolerate polluted water, while other types cannot. Healthy waters usually have many different kinds of macros.



Macroinvertebrate (MAC-row-in-VERT-ih-brate)

Macroinvertebrate (MAC-row-in-VERT-ih-brate)

Mayflies, order Ephemeroptera, are known for their short adult lifespan, often only a few hours. The nymph have elongated bodies that are slightly flattened. The wingpads and three pairs of legs are on the thorax. Each leg has a claw at the end for grasping material to move around. It has three long tails. Mayflies cannot live in polluted water.