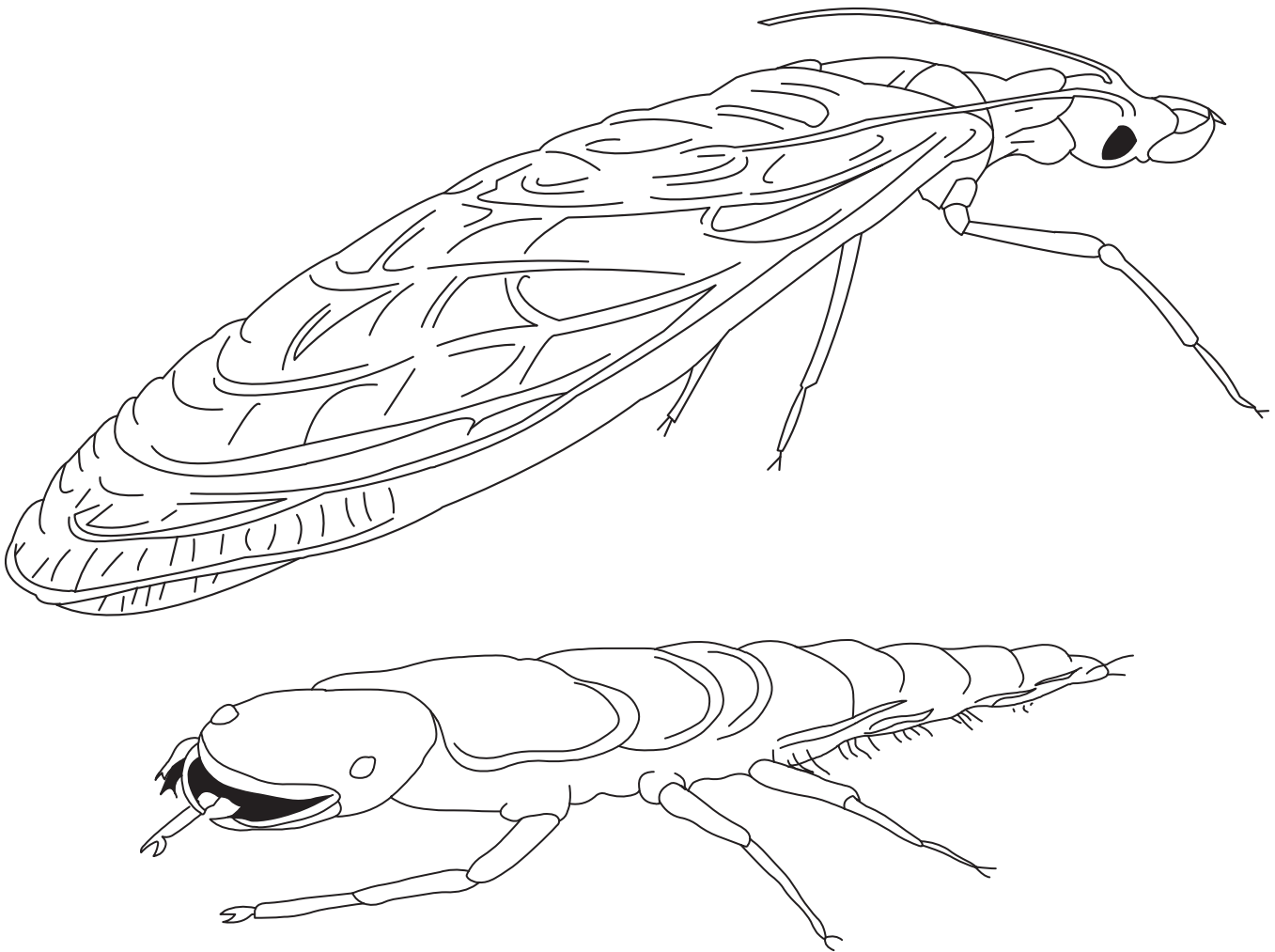




# Inside the world of **macros**

Macroinvertebrates are animals without a backbone that you can see without using a microscope or magnifying glass. Macros that live on or in the ground beneath the water are called benthic macros and include snails, mussels, crayfish, worms and leeches. Scientists look for young (nymph or larva) benthic macros to measure water quality. Certain macros can tolerate polluted water, while other types cannot. Healthy waters usually have many different kinds of macros.



Macroinvertebrate (MAC-row-in-VERT-ih-brate)

Macroinvertebrate (MAC-row-in-VERT-ih-brate)

**Dobsonflies**, order Megaloptera, are a small group whose larvae have flattened, elongated bodies. They have prominent chewing mouth parts and three pairs of segmented legs. The adults have a pair of long wings that have many veins. Dobsonflies are considered beneficial to a water body, thriving in clean to moderately clean water.