

Central Florida Water Initiative

Water for Tomorrow

Steering Committee Meeting and
RWSP Conclusions and Recommendations
April 23, 2025



Steering Committee Members

Florida Department of Environmental Protection

Deputy Secretary for Ecosystems Restoration

Adam Blalock, Chair

Utility Representative

Public Water Supply, Toho Water Authority

Todd Swingle

Water Management Districts

South Florida Water Management District

Benjamin Butler

Southwest Florida Water Management District

Ashley Bell Barnett

St. Johns River Water Management District

J. Chris Peterson

Florida Department of Agriculture and Consumer Services

Director, Office of Agriculture Water Policy

West Gregory

Agenda

- Steering Committee Introduction
 - Pamela Flores, FDEP
- Draft 2025 CFWI RWSP Conclusions and Recommendations
 - Callie Register, SJRWMD
- Public Comments
- Steering Committee Comments
- Steering Committee Schedule
- Adjourn

Draft 2025 CFWI RWSP

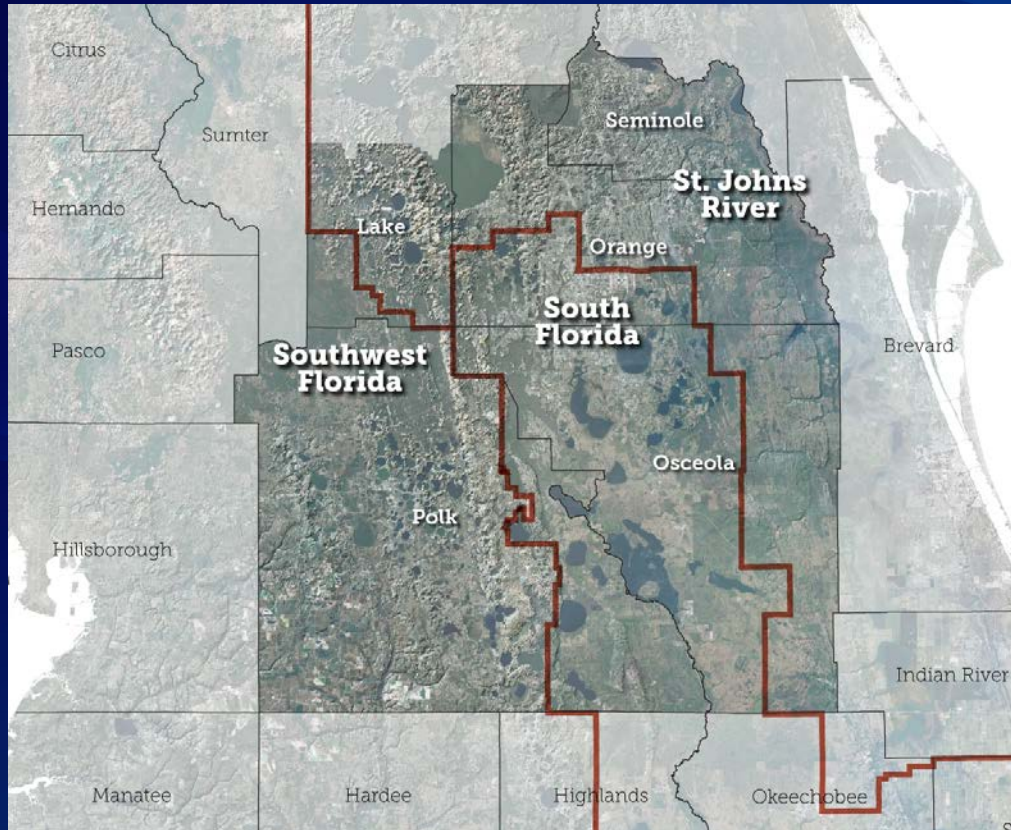
Conclusions and Recommendations



Callie Register, P.E.

St. Johns River Water Management District
Regional Water Supply Planning Coordinator

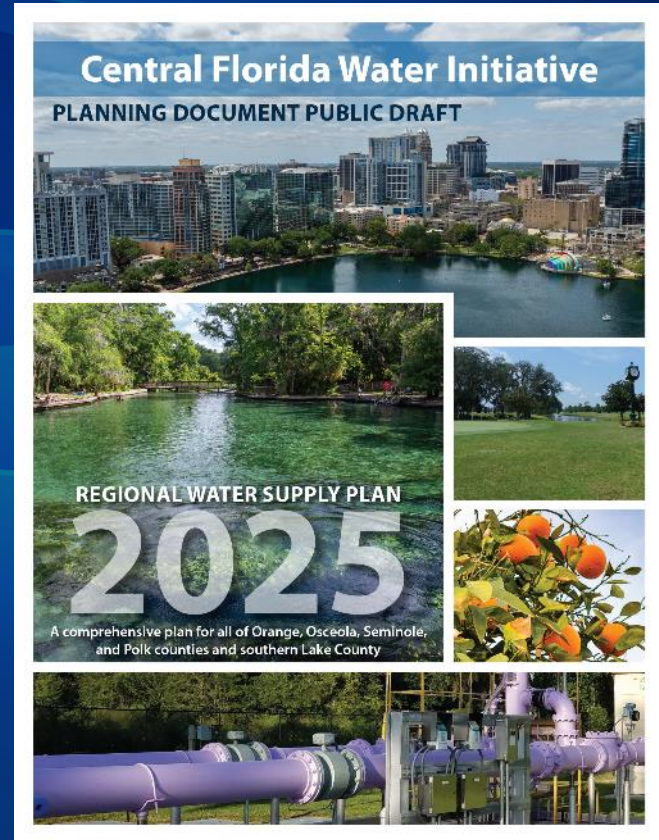
Central Florida Water Initiative Planning Area



- A collaborative water supply planning effort to protect, manage, conserve, and restore Central Florida's water resources
- A comprehensive plan for Orange, Osceola, Polk, Seminole, and southern Lake counties

2025 CFWI Regional Water Supply Plan

- 20-year planning period
- Updated every 5 years
- RWSP Chapters include
 - Progress since 2020 CFWI RWSP
 - Population and Water Demands
 - Water Resource Assessment
 - Water Conservation
 - Water Source Options
 - Water Supply & Water Resource Development
 - Funding Options
 - Conclusions and Recommendations



Progress since 2020 CFWI RWSP

- Regulatory Protection
 - CFWI Rule adoption
 - Minimum Flows and Minimum Water Levels
- Intergovernmental and Public Coordination
- Alternative Water Supply Development
- Water Conservation
- Cooperative Funding
- Water Storage and Restoration Projects



Water Demands in the CFWI Planning Area

	Public Supply	Domestic and Small Public Supply	Agricultural Irrigation	Industrial/ Commercial/ Institutional	Landscape/ Recreational Irrigation	Power Generation	Total
2020	406.83	19.96	134.70	42.39	30.27	5.00	639.15
2045	642.19	14.80	131.02	66.19	38.72	9.58	902.50
Change	235.36	-5.16	-3.68	23.80	8.45	4.58	263.35
% Change	58%	-26%	-3%	56%	28%	92%	41%

Demands under average rainfall conditions, in million gallons per day.

Population

2020 3,383,425 residents
2045 4,741,314 residents

40% increase



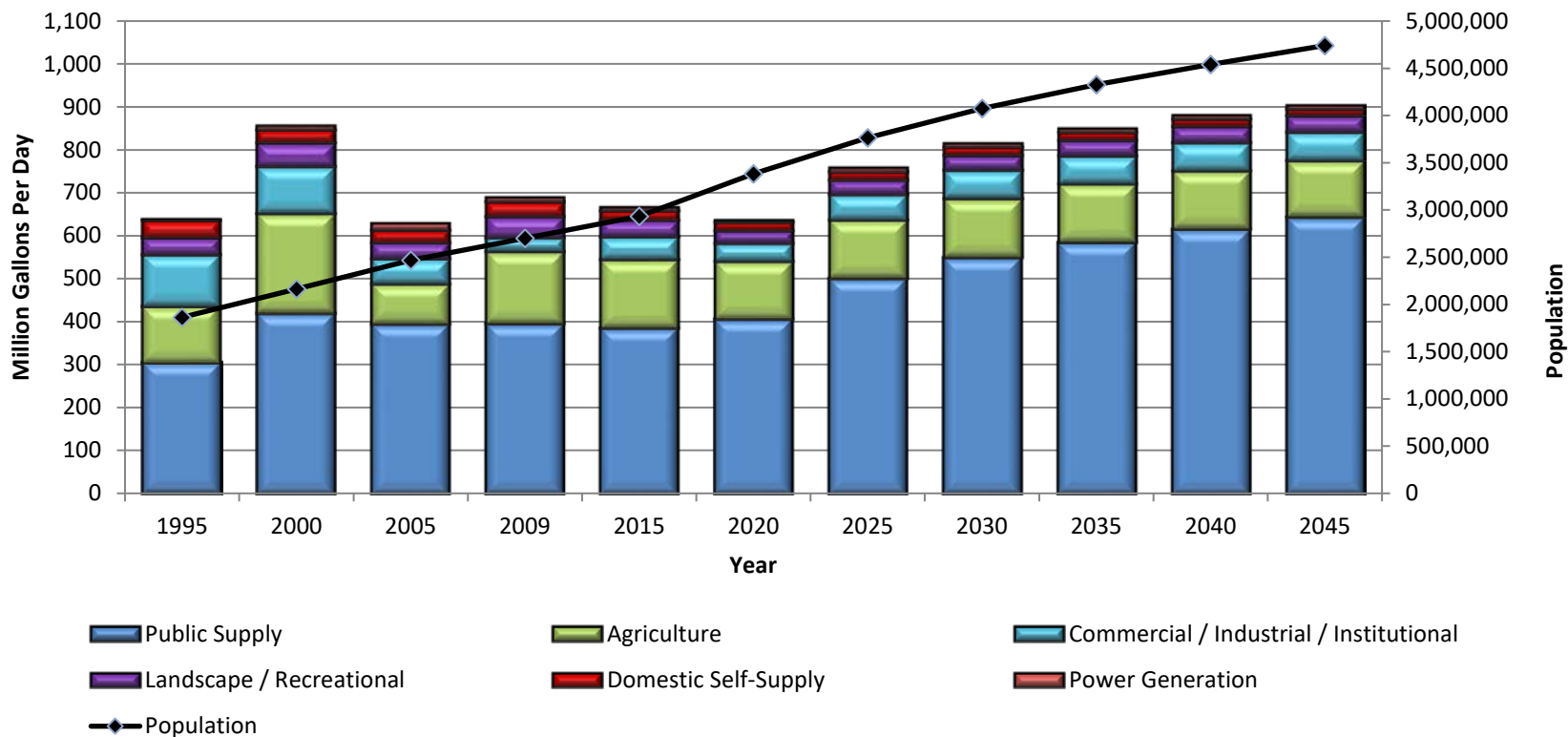
Irrigated agricultural acres

2020 121,686 acres
2045 115,183 acres

5% decrease



Historic Water Use and Projected Water Demand versus Historic Population and Projected Population

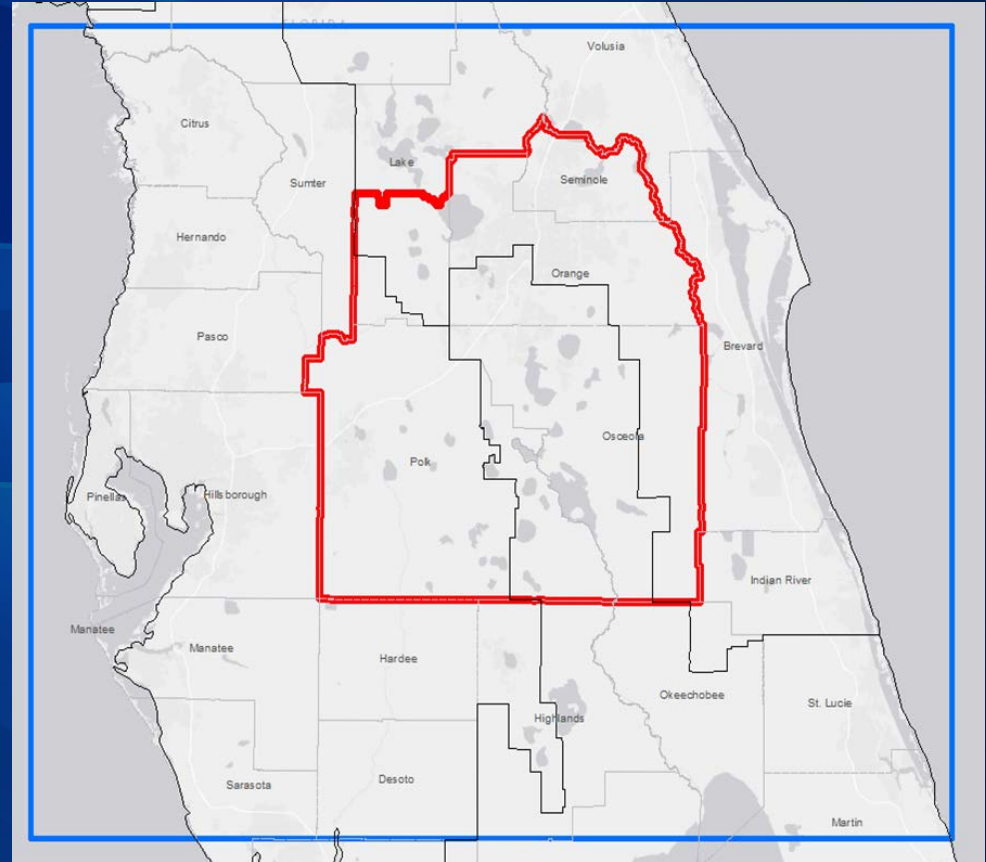


1995-2020 is historic data / 2025-2045 is projected data.

East Central Florida Transient Model Expanded

- Simulate effects of groundwater withdrawals on water resources and related natural systems
- Assist in evaluating whether projected demands can be met over the 20-year planning horizon while meeting resource protection criteria

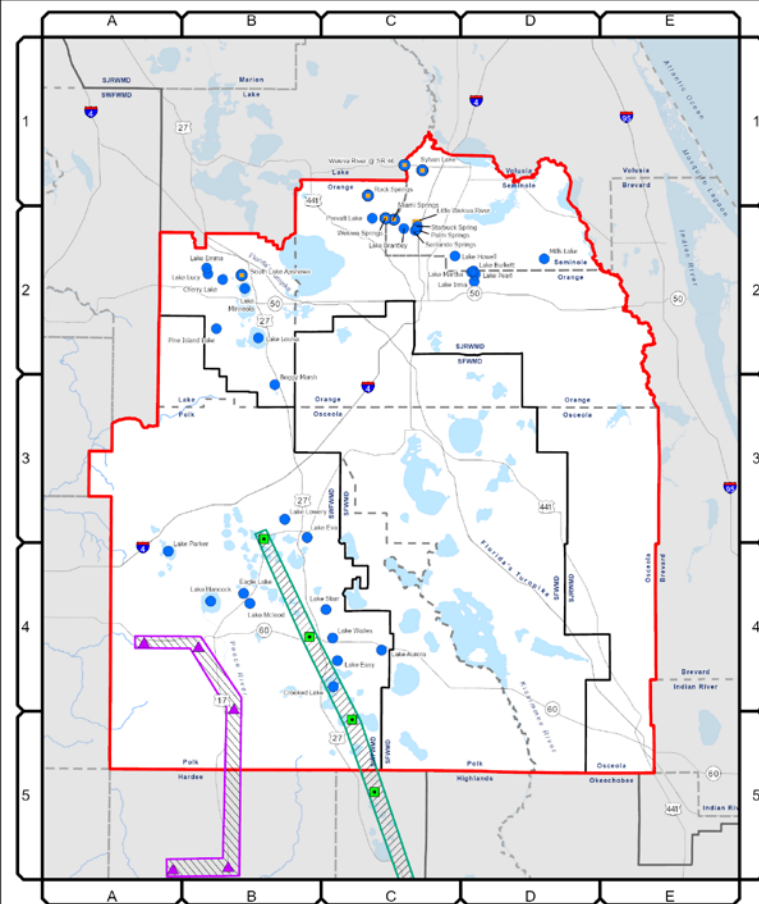
Red line = CFWI Planning Area boundary
Blue line = ECFTX model boundary



MFLs and MFL-Related Environmental Criteria

38 criteria assessed:

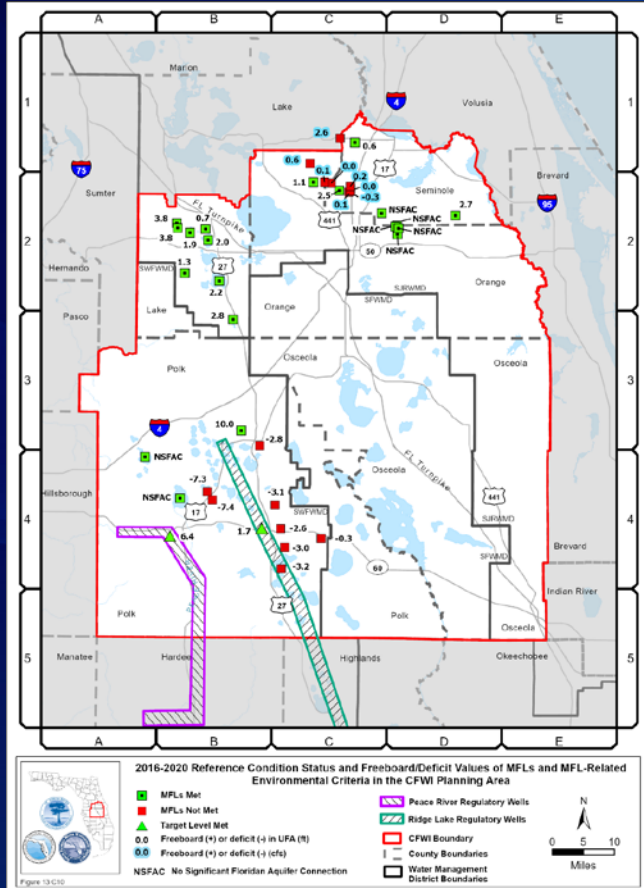
- Adopted MFLs: 26 lakes and wetlands
- 1 target regulatory water level based on Upper Peace River Regulatory Wells for SWUCA recovery
- 1 target regulatory water level based on Ridge Lakes Regulatory Wells for SWUCA recovery
- Peer reviewed but not yet adopted MFLs for 10 water bodies: 1 new river segment and re-evaluated MFLs for 1 river segment, 6 springs, and 2 lakes



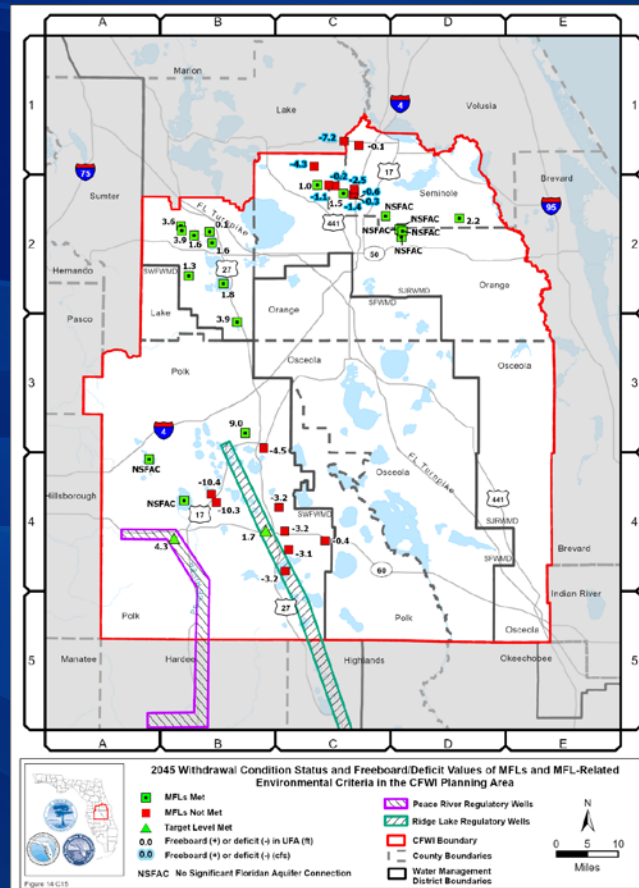
MFLs and MFL-Related Environmental Criteria



MFLs Status: 2016-2020 RC to 2045 Withdrawals Condition



2016-2020 Reference Condition

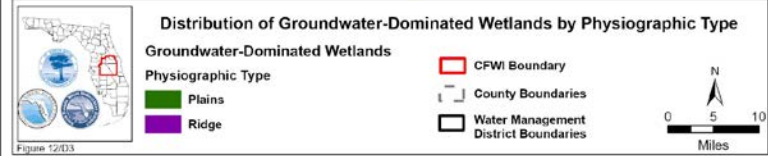
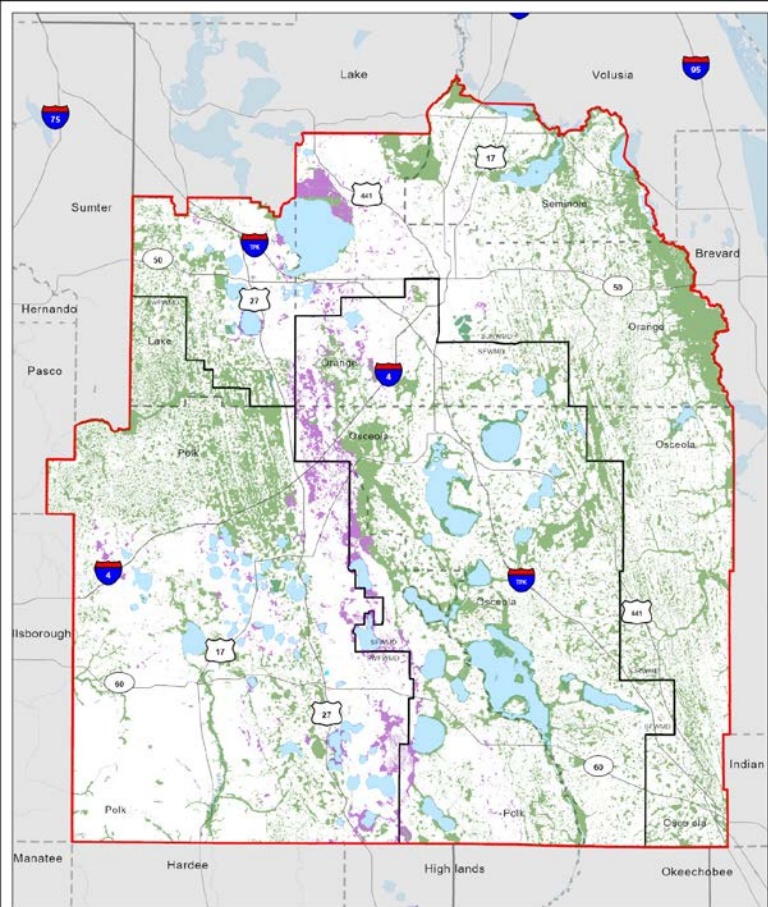


2045 Withdrawals Condition

- Green symbols indicate criteria met
- Red symbols indicate criteria not met
- 1 system changed status: Sylvan Lake

Groundwater-Dominated Wetlands in CFWI Planning Area

- About 442,290 acres included in analysis
- 382,850 acres of Plains wetlands
- 59,440 acres of Ridge wetlands

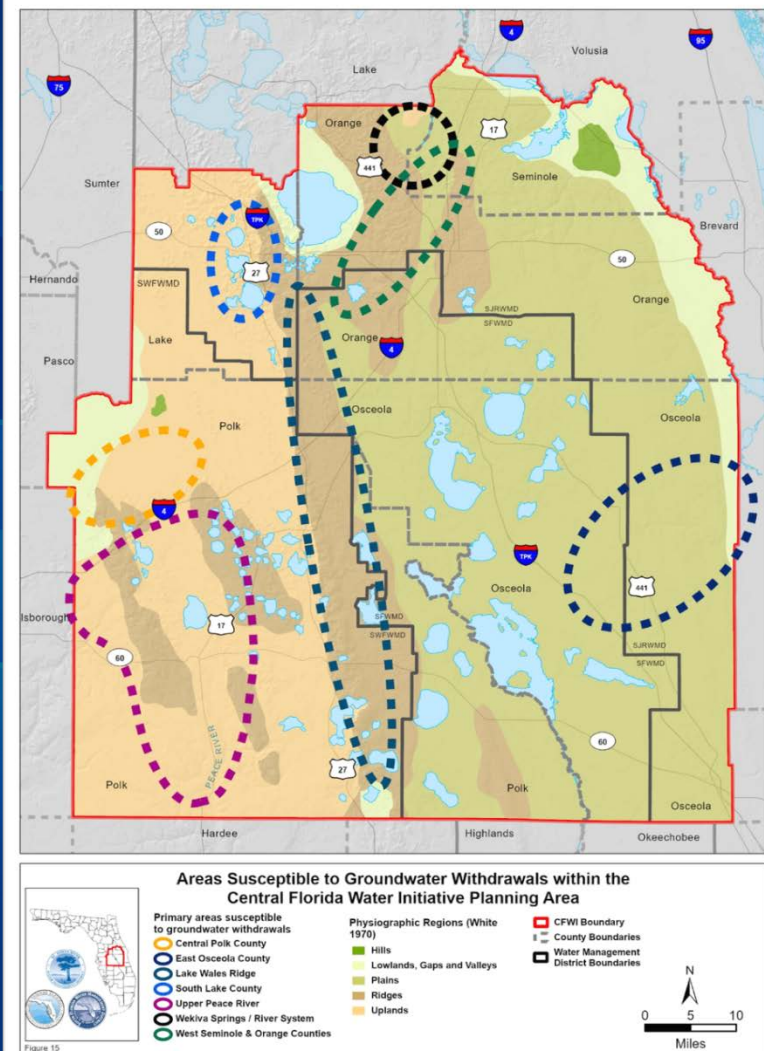


Environmental Criteria Assessment Results

Model Scenarios	MFLs and MFL-Related (38 criteria)	Stressed Plains Wetlands Acres (382,850 acres evaluated)	% Increase in Stressed Plains Wetlands	Stressed Ridge Wetlands Acres (59,400 acres evaluated)	% Increase in Stressed Ridge Wetlands
2016-2020 Reference Condition	16 not met	75,605	--	14,936	--
2025	16 not met	77,052	0.4%	15,530 – 16,750	1 - 3%
2030	16 not met	77,813	0.6%	15,798 – 17,940	1.5 - 5%
2035	16 not met	78,385	0.8%	15,988 – 18,713	2 - 6%
2040	16 not met	78,995	0.9%	16,195 – 19,539	2 - 8%
2045	17 not met	79,471	1.1%	16,340 – 20,162	2 - 9%

Primary Areas Susceptible to Groundwater Withdrawals

- Wekiwa Springs/River System
- West Seminole County/West Orange County
- South Lake County
- East Osceola County
- Lake Wales Ridge
- Upper Peace River Basin
- Central Polk County (north of I-4)



Planning-Level Groundwater Availability

Groundwater available	760 mgd
Year 2020 groundwater use	603 mgd
Year 2045 groundwater demand	856 mgd
Groundwater shortfall	96 mgd
To meet these demands:	
Project Options	497 mgd
Conservation	45 mgd

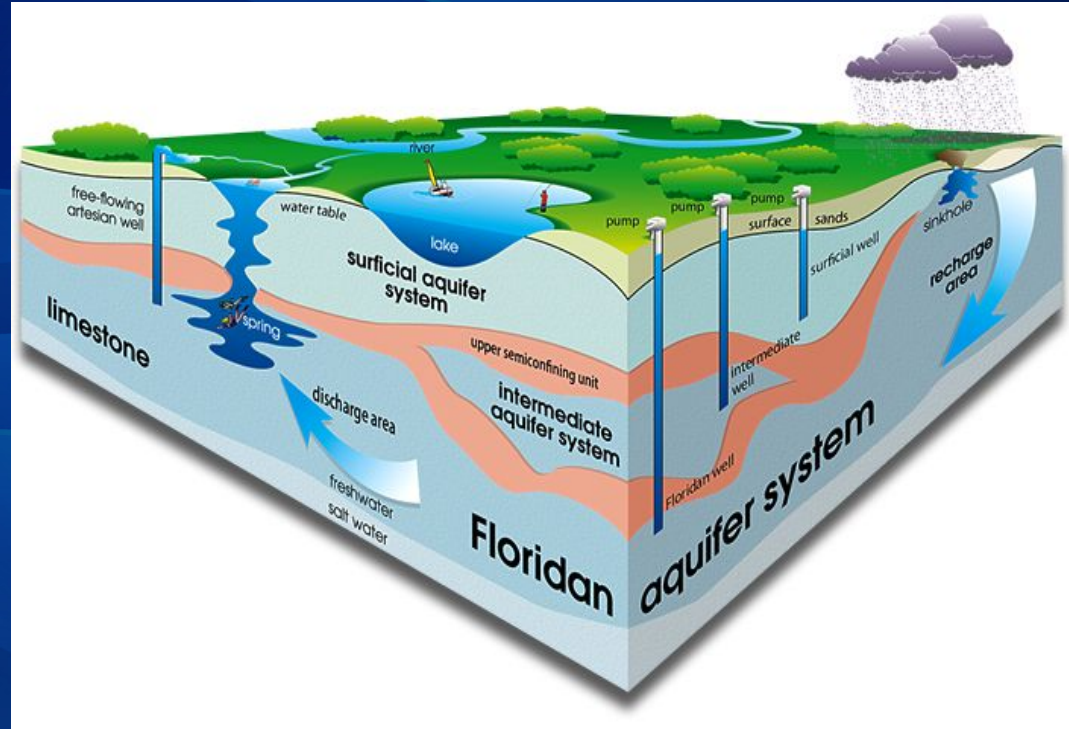
million gallons per day (mgd)

Projected 2045 Water Conservation Savings

Category	Projected 2045 Water Demand (mgd)	Projected 2045 Water Conservation Savings (mgd)
Public Supply	642.19	36.95 – 38.21
Domestic and Small Public Supply	14.80	0.43
Agriculture	131.02	4.19 – 7.17
Landscape/Recreational	38.72	1.74
Commercial/Industrial/Institutional	66.19	1.49 – 4.50
Power Generation	9.58	
Total	902.50	44.80 – 52.05

Water Source Options

- Traditional sources
 - Surficial and Intermediate Aquifer Systems
 - Upper Floridan Aquifer
- Alternative sources
 - Brackish / Nontraditional Groundwater
 - Reclaimed Water
 - Surface Water
 - Stormwater
 - Seawater
 - Storage Capacity
 - ASR and Reservoirs



Water Supply and Water Resource Development Options

County	Brackish Groundwater	Management Strategies	Reclaimed Water	Surface Water	Stormwater	Total
Lake	13.70	0.00	4.80	5.00	0.00	23.50
Orange	10.00	5.00	41.19	54.00	1.06	111.25
Orange and Osceola	0.00	0.00	0.00	17.00	0.00	17.00
Osceola *	30.00	0.00	30.50	106.00	6.00	172.50
Polk	22.50	0.00	37.36	1.50	0.00	61.36
Seminole	3.00	0.00	6.53	102.20	0.00	111.73
Total	79.20	5.00	120.38	285.70	7.06	497.34

* Includes the Grove Land Reservoir Project located in Okeechobee and Indian River Counties.

Funding Options

- Water Supplier and User Funding
 - *Water utility revenue*
- Water Management District Funding
 - *Cooperative/cost-share programs*
 - *Water Resource Development Work Program*
 - *District Initiatives and FARMS/WISE programs*
- State Funding
 - *Water Protection and Sustainability Program*
 - *Alternative Water Supply and Development Appropriation*
 - *Drinking Water State Revolving Fund Program*
 - *Florida Forever Program*
 - *Springs Restoration Funding*
 - *Agricultural Best Management Practices*
- Federal Funding
- Public Private Partnerships, Cooperatives, and Other Private Investment

Draft Conclusion and Recommendations

- Although groundwater sources are limited, the Draft 2025 CFWI RWSP concludes that current and future water demands can be met through 2045, while sustaining water resources and related natural systems
- An integrated approach is recommended to achieve this conclusion:
 - Continued implementation and expansion of water conservation measures
 - Continued development of alternative water supplies
 - Optimization of groundwater withdrawals
 - Continued research and hydrogeologic investigations
 - Pursuit of funding for water resource/water supply projects

2025 CFWI RWSP Schedule

<i>Public Outreach Meeting</i>	<i>October 2023</i>
<i>Technical Methods Public Workshop</i>	<i>April 2024</i>
<i>Steering Committee/Public Meeting (with results)</i>	<i>November 2024</i>
<i>Governing Board overview of Draft 2025 CFWI RWSP</i>	<i>February/March 2025</i>
<i>Draft 2025 CFWI RWSP for public comment</i>	<i>March 2025</i>
Steering Committee/Public Meeting	April 2025
Public Comment Ends	May 2025
Steering Committee/Public Meeting on Draft Final RWSP	Sep/October 2025
Governing Board Consideration of the 2025 CFWI RWSP	November 2025
Final 2025 CFWI RWSP posted to cfwiwater.com	December 2025

Written Public Comment

- Public comment form is available at www.cfwiwater.com/RWSP_comments
- Comment period ends at 4:00 p.m. on May 16, 2025

Draft Regional Water Supply Plan

The work of the CFWI is summarized in a series of Regional Water Supply Plan (RWSP) documents. Currently, the draft 2025 CFWI RWSP is posted below for public review and comment. The RWSP process is a public process and public review and comment of the draft 2025 CFWI RWSP is encouraged to gather feedback, improve transparency, and help identify challenges and possible solutions. The draft documents may be accessed below:

[Draft 2025 CFWI Regional Water Supply Plan](#)

[Draft 2025 CFWI Regional Water Supply Plan Appendices](#)

All comments received during the open comment period will be reviewed and considered by district staff. The public comment period on the draft 2025 CFWI RWSP is from March 14, 2025 through May 16, 2025. Please use the Comments Form button below to provide comments on the draft 2025 CFWI RWSP documents.

[Comments Form](#)

Public Comments

- If you are participating via Zoom, use the Raise Hand feature
- If you are participating via phone:
 - *9 Raises Hand
 - *6 Mutes/Unmutes
- Please submit your comment at:
www.cfwewater.com/RWSP_comments



Steering Committee Comment

Steering Committee Schedule

<i>Public Outreach Meeting</i>	<i>October 2023</i>
<i>Technical Methods Public Workshop</i>	<i>April 2024</i>
<i>Steering Committee/Public Meeting (with results)</i>	<i>November 2024</i>
<i>Governing Board overview of Draft 2025 CFWI RWSP</i>	<i>February/March 2025</i>
<i>Draft 2025 CFWI RWSP for public comment</i>	<i>March 2025</i>
<i>Steering Committee/Public Meeting</i>	<i>April 2025</i>
<i>Public Comment Ends</i>	<i>May 2025</i>
Steering Committee/Public Meeting on Draft Final RWSP	Sep/October 2025
Governing Board Consideration of the 2025 CFWI RWSP	November 2025
Final 2025 CFWI RWSP posted to cfwiwater.com	December 2025



Central Florida Water Initiative



WATER FOR TOMORROW

Contacts

FAQs

Accessibility statement



The basics of water and CFWI

Learn about where your water comes from today and planning for tomorrow.



Regional Water Supply Planning

Click here to view the Draft 2025 Regional Water Supply Plan



Meetings and events

Find details about public involvement opportunities.



CFWI News

Stay informed about the latest developments and initiatives.



Water conservation

Discover some of the most popular and preferred ways to save water.



Other helpful information

Explore the world of water through related links, publications and videos.

Additional information
can be found at:

cfwiwater.com

