

Central Florida Coordination Area Update (CFCA)

Overview and Status of CFCA Efforts
July 29, 2010

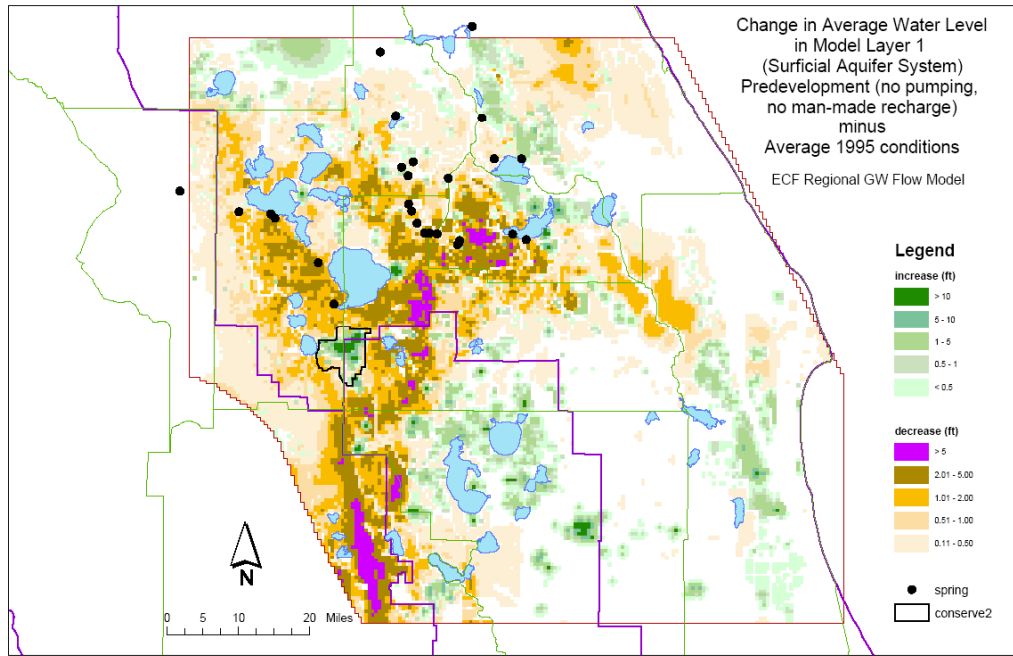
*Presented by Chris Sweazy, P.G.; Lead Hydrogeologist/Planner
South Florida Water Management District*

Resource Concerns & Water Supply Planning

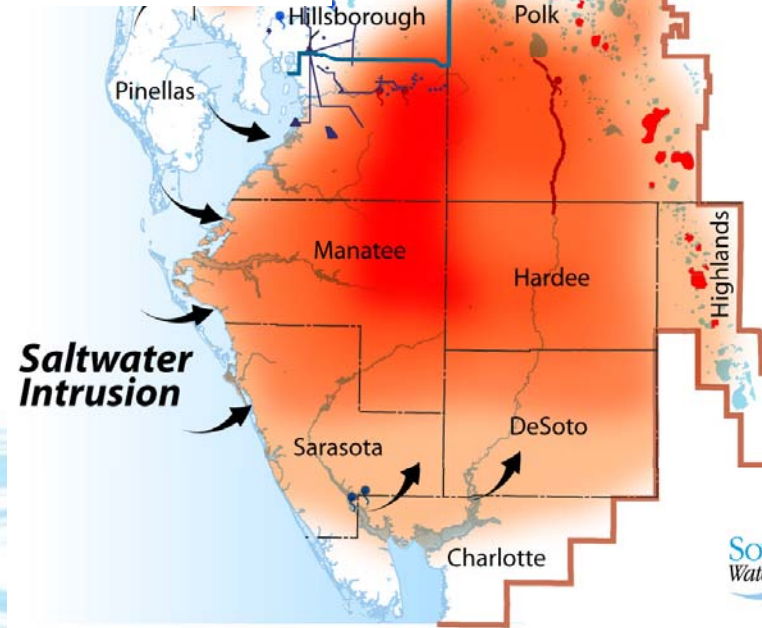
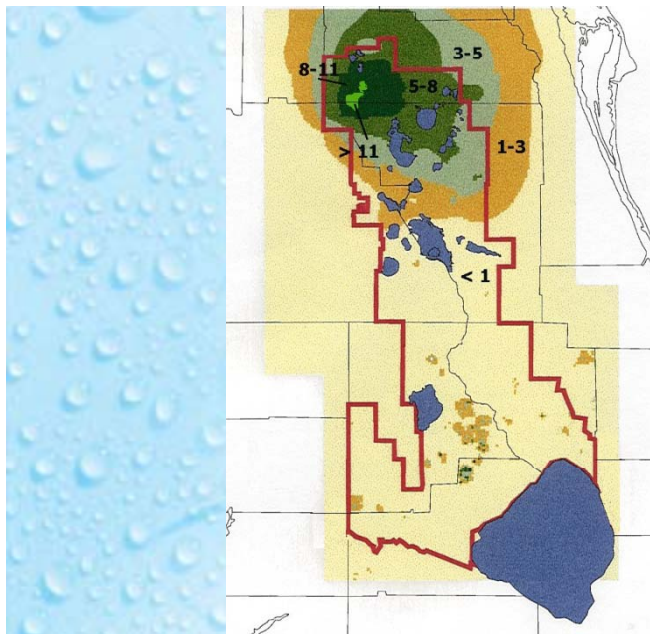
- 2000: Regional water supply plans for all WMD's identified water supply concerns before 2020 for Central Florida
 - SJRWMD and SFWMD identified the potential for wetland and spring impacts in Polk, Orange and Osceola Counties
 - SWFWMD identified concerns to be addressed under the SWUCA recovery strategy
- 2005: Regional water supply plans for WMD's confirmed water supply issues and refined the region for concern

CENTRAL FLORIDA COORDINATION AREA

Identified Resource Concerns

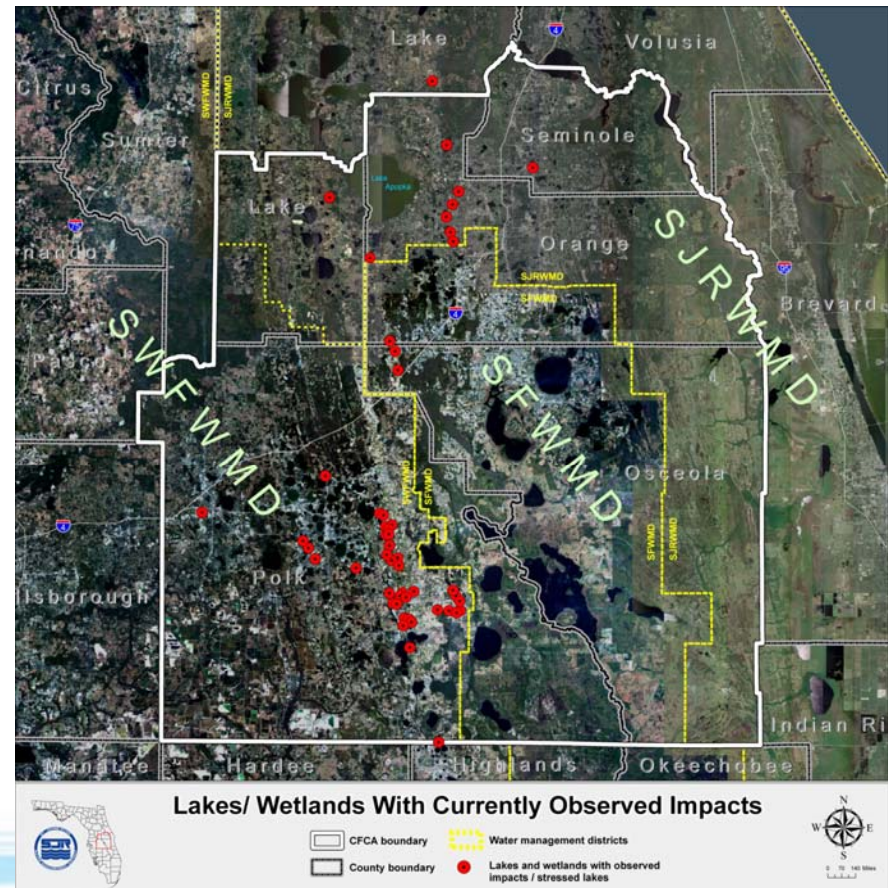


Conceptual Map Showing Areas of Resource Concern



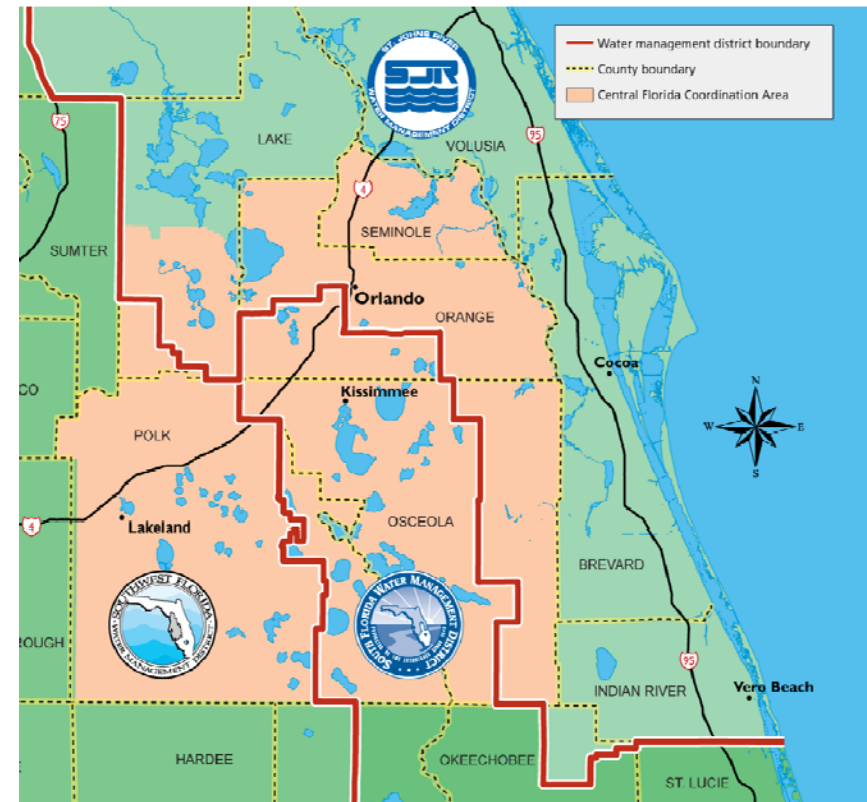
Recent Water History for Central Florida

- **2006:** litigation between suppliers over water availability in the permitting process
- **2006:** CFCA *Action Plan* was developed by all three Districts
- **2008:** Districts begin to identify impacts to sites on a regional scale



What is the CFCA?



- Centers on a portion of the hydrologic basin encompassed by three water management districts.
- Area where each District has identified near future water resource concerns.
- Area where an additional level coordination on a water supply strategy and alternative source development is needed.



CFCA Action Plan Basics

- 3 WMD's are to have coordinated efforts in three component areas:
 - Regulatory
 - Modeling and Predictive Tools
 - Planning
- Action Plan contains two "Phases"
 - Develop interim rules
 - Long-term rulemaking effort

CFCA Master Schedule

	2006	2007	2008	2009	2010	2011	2012
PHASE I Interim Rulemaking							
PHASE II Long-term Rulemaking							

CFCA Phase I Goals

- Get an immediate handle on permitting activities
- Develop an equitable means of allocating this remaining available resource
- Initiate research and assessments to *refine* the groundwater availability

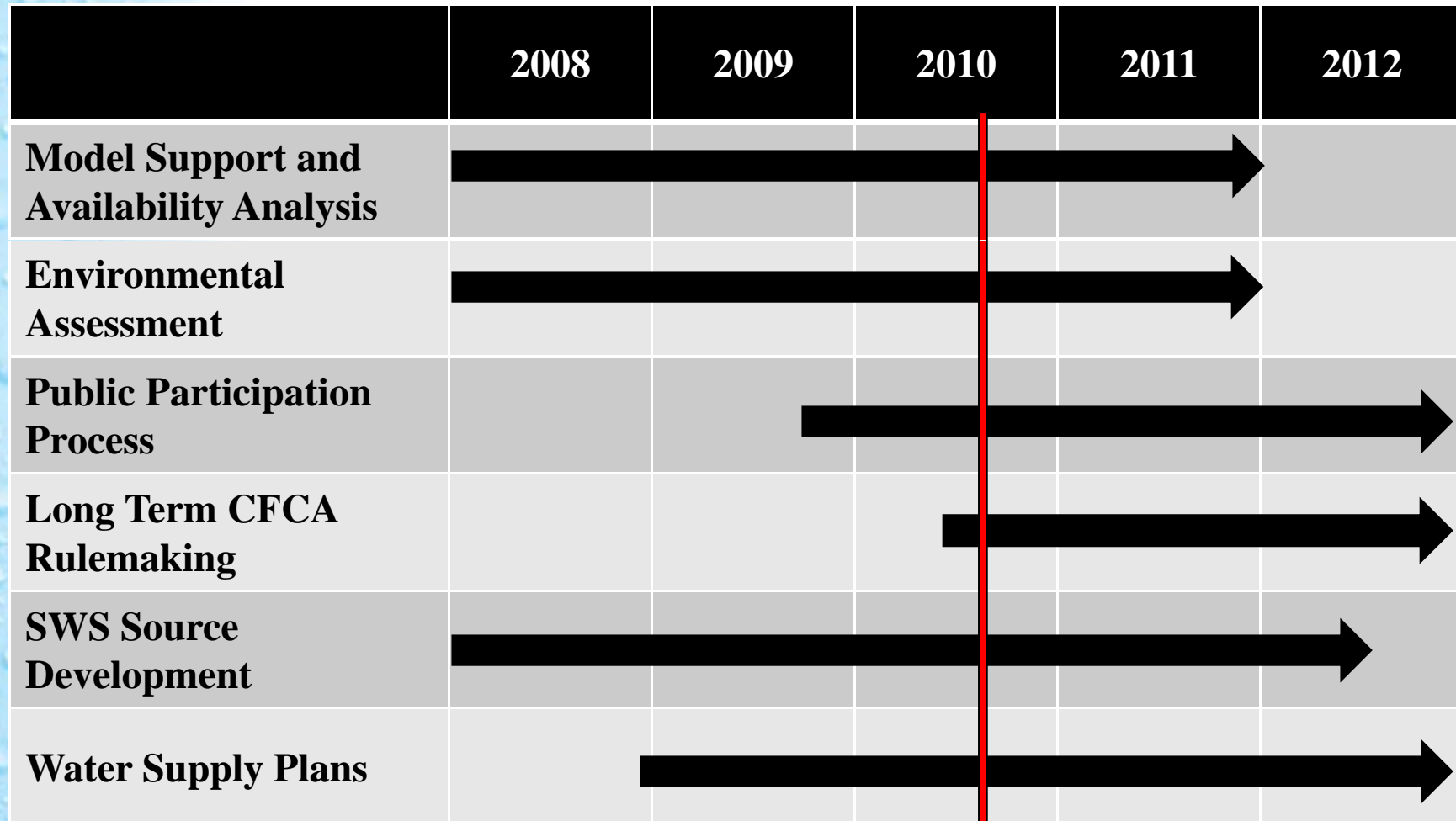
CFCA Phase I “Interim” Rules

- Adopted in December 2007
- Groundwater allocations would be limited to a maximum of the demonstrated 2013 demand
- The 2013 groundwater limitation applies to entire CFCA area except SWFWMD Southern Water Use Caution Area (SWUCA)
- Rule sunsets on December 31, 2012

CFCA Phase II Goals

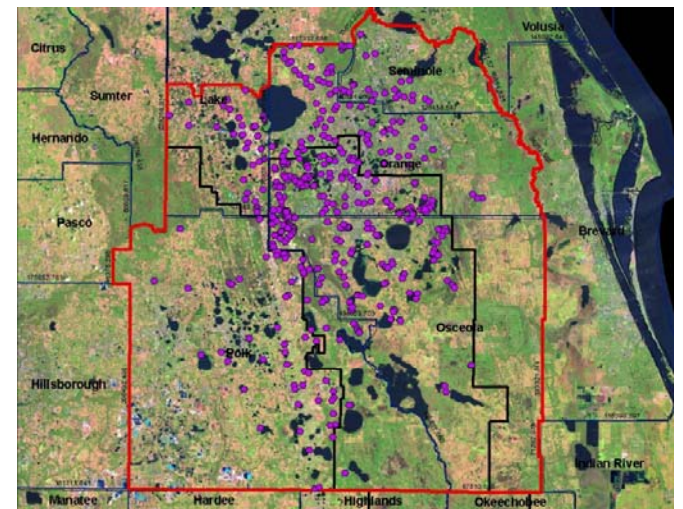
- Complete resource assessments to provide a more definitive answer on groundwater availability
- Hold solution development workshops
- Develop long-term regulations for equitable allocation of groundwater
- Develop a Comprehensive Water Supply Plan

CFCA Master Schedule- Phase II



CFCA Phase II Task Status

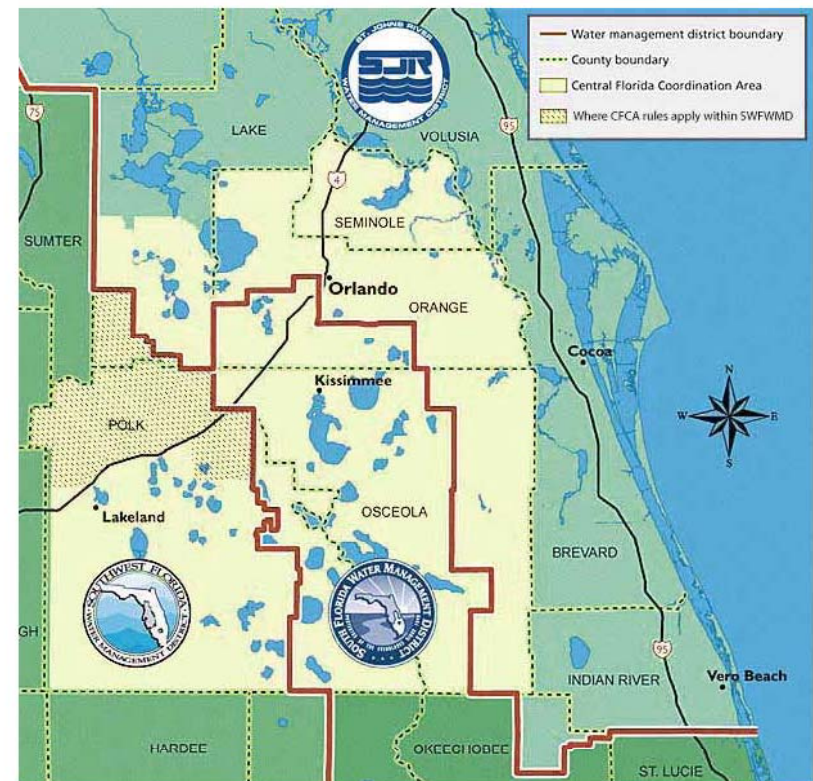
- Modeling Support and Availability Analysis
 - Resource investigations
 - Tools Development
- Environmental assessments
 - 400+ sites
- Public Workshops
- SWS development
- Update water supply plans as necessary



CFCA Phase II Work Plan

- Initiatives and Key Components
 - Tools development
 - Environmental assessment
 - Public participation
 - Rule development
- Work Plan available at www.cfcawater.com

Central Florida Coordination Area (CFCA) WORK PLAN Phase II



Goals of Today's Workshop

- Describe the proposed technical approach for the groundwater availability assessment
- Introduce the groundwater and statistical models
- Describe how to obtain access to the models being used in the assessment
- Define the proposed path forward
- Receive feedback on all of these topics and set stage for future meetings